

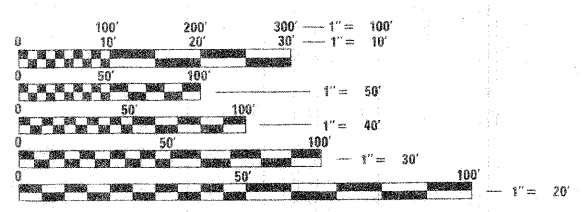
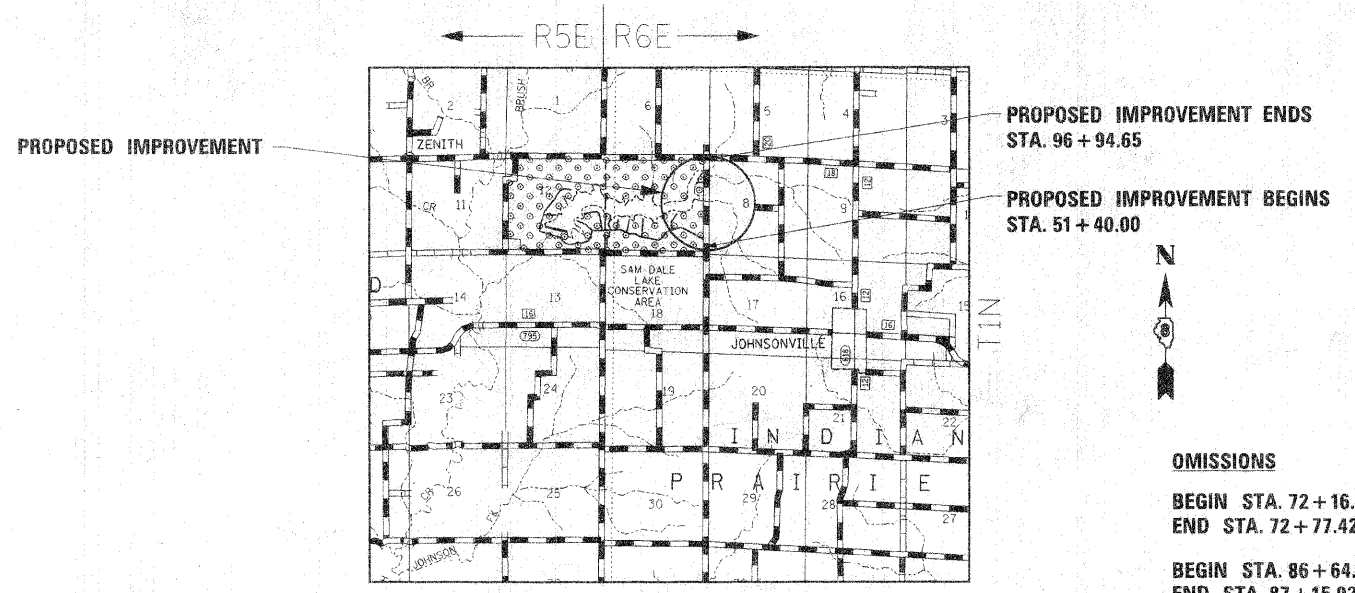
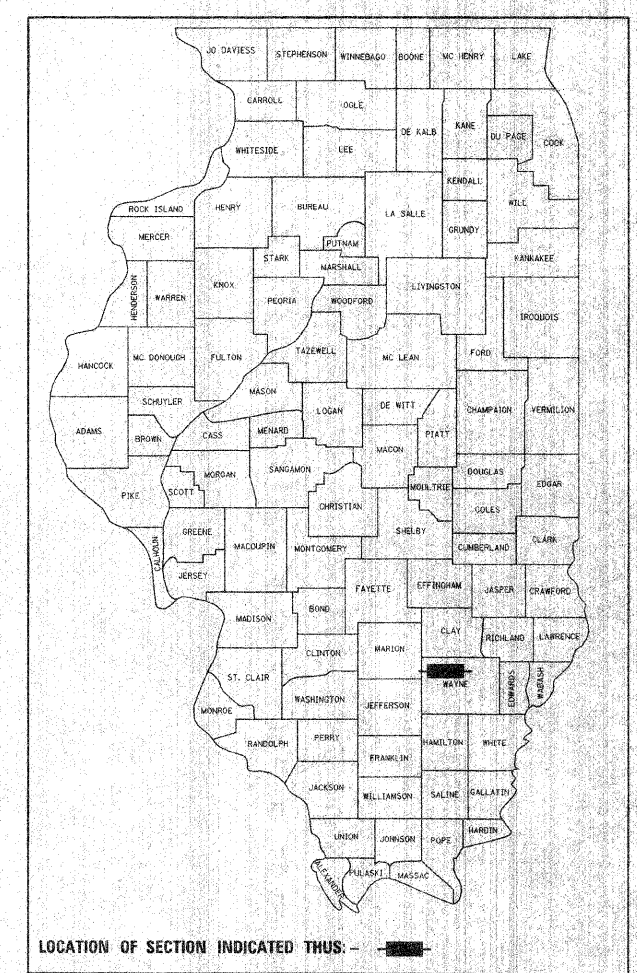
F.A. RTE.	SECTION	COUNTY	TOTAL SHEETS	SHEET NO.
		WAYNE	8	1

STATE OF ILLINOIS
 DEPARTMENT OF TRANSPORTATION
 DIVISION OF HIGHWAYS

**PROPOSED
 HIGHWAY PLANS**

IDOT / IDNR STATEWIDE
 SAM DALE STATE PARK
 ROADWAY IMPROVEMENTS
 WAYNE COUNTY
 C-30-002-08

FOR INDEX OF SHEETS, SEE SHEET NO. 2



FULL SIZE PLANS HAVE BEEN PREPARED USING STANDARD ENGINEERING SCALES. REDUCED SIZED PLANS WILL NOT CONFORM TO STANDARD SCALES. IN MAKING MEASUREMENTS ON REDUCED PLANS, THE ABOVE SCALES MAY BE USED.

J.U.L.I.E.
 JOINT UTILITY LOCATION INFORMATION FOR EXCAVATION
 1-800-892-0123

LOCATION MAP SCALE: 1" = 100'
 GROSS LENGTH OF PROJECT = 4,554.65 FT. = 0.86 MILES
 NET LENGTH OF PROJECT = 4,393.06 FT. = 0.83 MILES

- OMISSIONS**
- BEGIN STA. 72 + 16.49
 END STA. 72 + 77.42
 - BEGIN STA. 86 + 64.67
 END STA. 87 + 15.92
 - BEGIN STA. 90 + 37.38
 END STA. 90 + 86.79

STATE OF ILLINOIS
 DEPARTMENT OF TRANSPORTATION
 DIVISION OF HIGHWAYS

SUBMITTED January 4, 2008
Eric E. Harms
 DEPUTY DIRECTOR OF HIGHWAYS

February 1, 2008
Eric E. Harms
 ENGINEER OF DESIGN AND ENVIRONMENT

February 1, 2008
Christina M. Reed
 DIRECTOR OF HIGHWAYS, CHIEF ENGINEER

**PRINTED BY THE AUTHORITY
 OF THE STATE OF ILLINOIS**