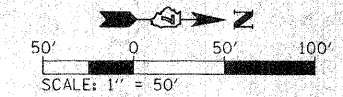
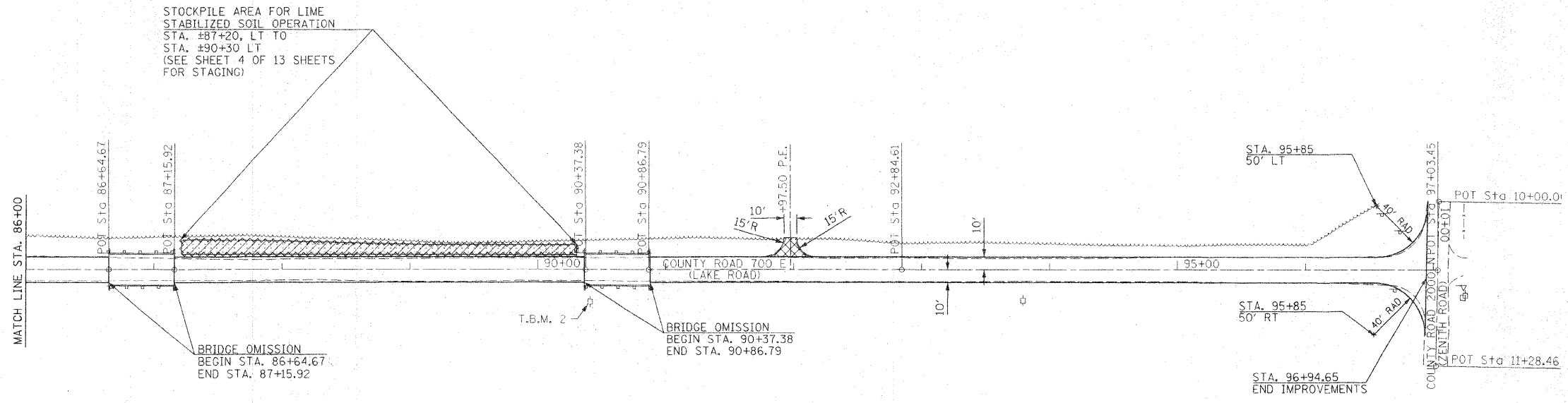


F.A. RTE.	SECTION	COUNTY	TOTAL SHEETS	SHEET NO.
		WAYNE	8	8
STA. 86+00		TO STA. 97+03.45		
FED. ROAD DIST. NO.		ILLINOIS FED. AID PROJECT		

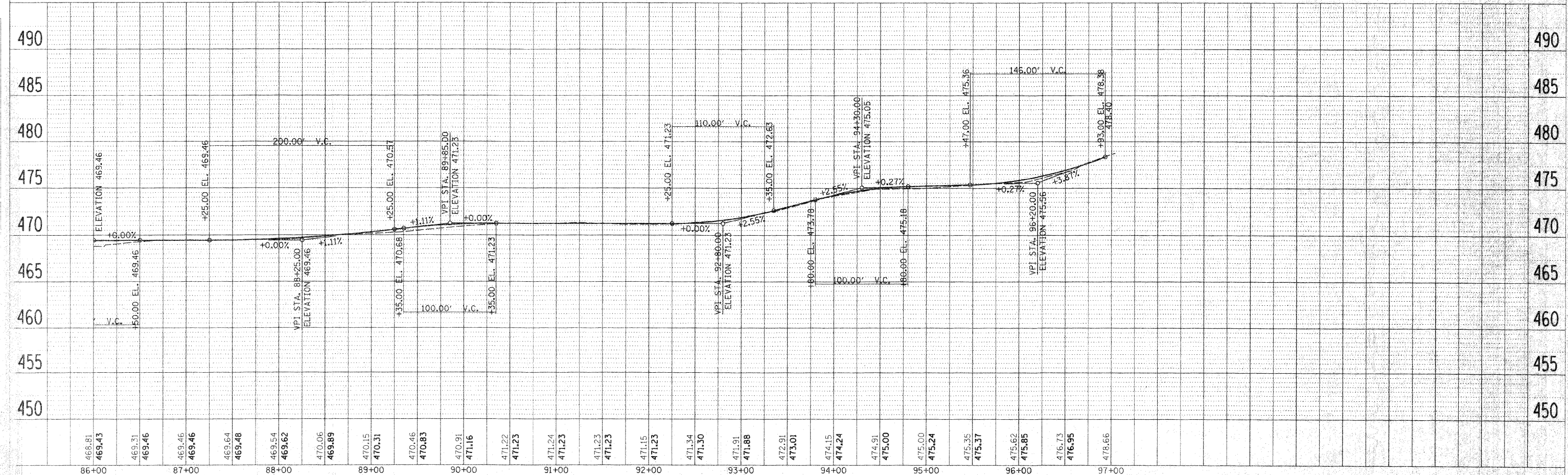


LEGEND

- A-2 SURFACE TREATMENT
- SEEDING, CLASS 2
- SOIL STORAGE AREA DURING LIME MODIFICATION PROCESS



T.B.M. 2: NAIL AND RING IN POWER POLE
ON EAST SIDE OF COUNTY ROAD
700 E
ELEVATION : 468.81



COUNTY ROAD 700 E (LAKE ROAD)

DATE	BY
DATE	BY
DATE	BY
DATE	BY

DATE	BY
DATE	BY
DATE	BY
DATE	BY