

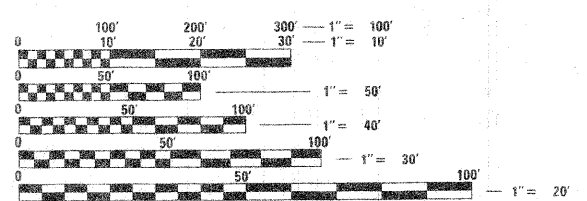
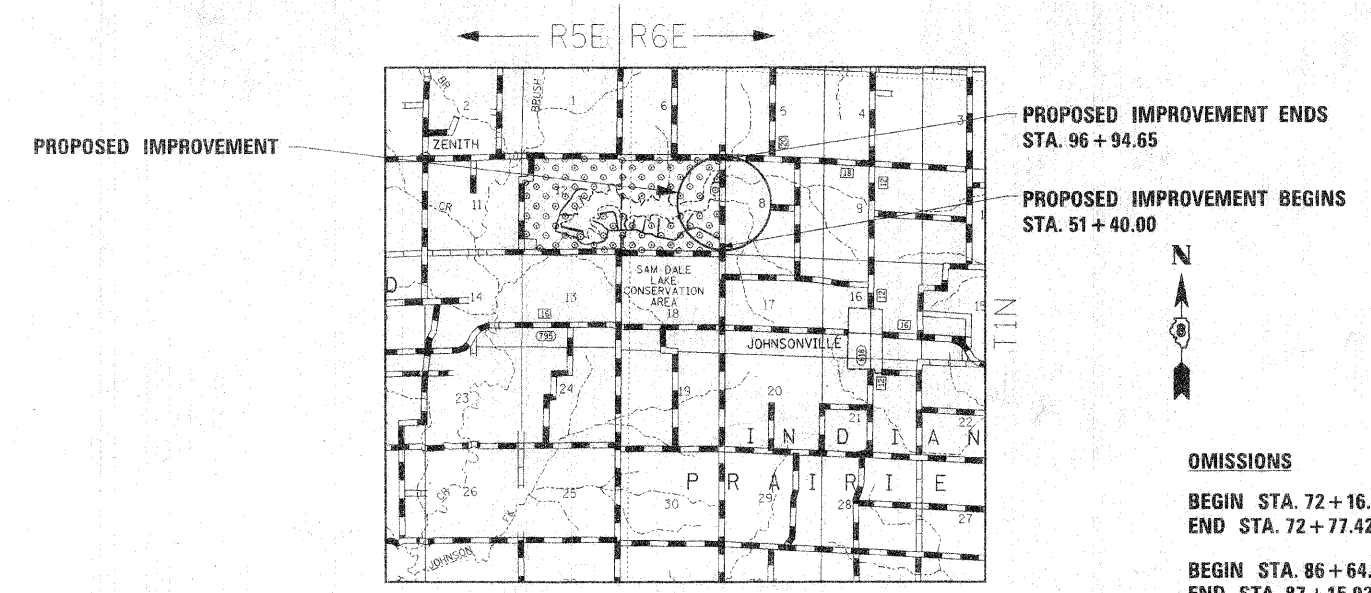
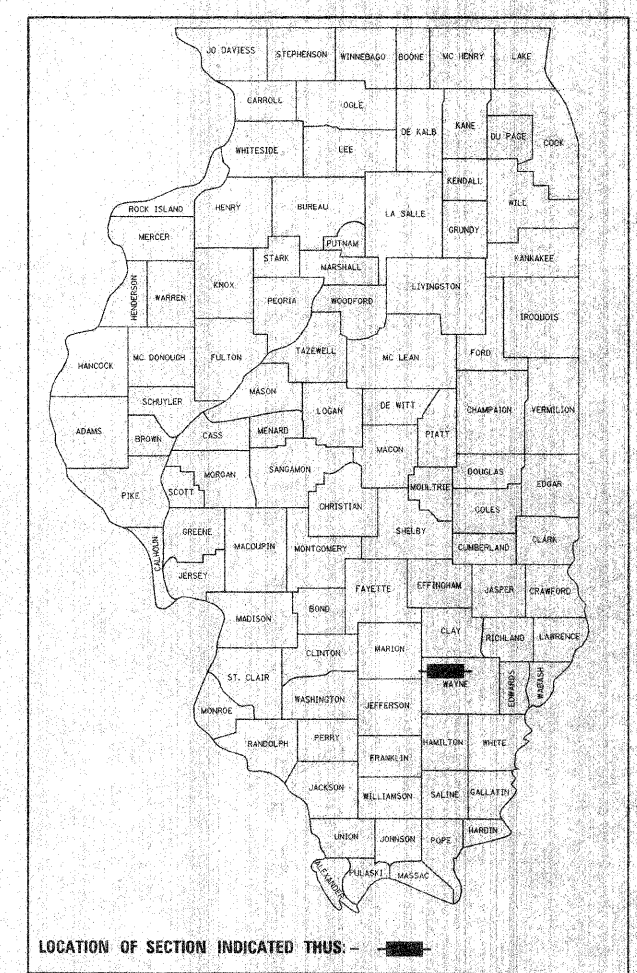
F.A. RTE.	SECTION	COUNTY	TOTAL SHEETS	SHEET NO.
		WAYNE	8	1

STATE OF ILLINOIS
DEPARTMENT OF TRANSPORTATION
DIVISION OF HIGHWAYS

**PROPOSED
HIGHWAY PLANS**

IDOT / IDNR STATEWIDE
SAM DALE STATE PARK
ROADWAY IMPROVEMENTS
WAYNE COUNTY
C-30-002-08

FOR INDEX OF SHEETS, SEE SHEET NO. 2



FULL SIZE PLANS HAVE BEEN PREPARED USING STANDARD ENGINEERING SCALES. REDUCED SIZED PLANS WILL NOT CONFORM TO STANDARD SCALES. IN MAKING MEASUREMENTS ON REDUCED PLANS, THE ABOVE SCALES MAY BE USED.

J.U.L.I.E.
JOINT UTILITY LOCATION INFORMATION FOR EXCAVATION
1-800-892-0123

LOCATION MAP SCALE: 1" = 100'
GROSS LENGTH OF PROJECT = 4,554.65 FT. = 0.86 MILES
NET LENGTH OF PROJECT = 4,393.06 FT. = 0.83 MILES

- OMISSIONS**
- BEGIN STA. 72 + 16.49
END STA. 72 + 77.42
 - BEGIN STA. 86 + 64.67
END STA. 87 + 15.92
 - BEGIN STA. 90 + 37.38
END STA. 90 + 86.79

STATE OF ILLINOIS
DEPARTMENT OF TRANSPORTATION
DIVISION OF HIGHWAYS

SUBMITTED *January 4, 2008*
Eric E. Harms
DEPUTY DIRECTOR OF HIGHWAYS

February 1, 2008
Eric E. Harms
ENGINEER OF DESIGN AND ENVIRONMENT

February 1, 2008
Christina M. Reed
DIRECTOR OF HIGHWAYS, CHIEF ENGINEER

**PRINTED BY THE AUTHORITY
OF THE STATE OF ILLINOIS**

F.A. RTE.	SECTION	COUNTY	TOTAL SHEETS	SHEET NO.
	WAYNE		8	2
STA.		TO STA.		
FED. ROAD DIST. NO.		ILLINOIS FED. AID PROJECT		

LIST OF STANDARDS

701501-0
701901
B.L.R. 22-5

SUMMARY OF QUANTITIES

SHEET NO.	SHEET TITLE
1	COVER SHEET
2	INDEX OF SHEETS, LIST OF STANDARDS, AND GENERAL NOTES
3	SUMMARY/SCHEDULE OF QUANTITIES
4	TYPICAL SECTIONS
5	PLAN/PROFILE SHEET
6	PLAN/PROFILE SHEET
7	PLAN/PROFILE SHEET
8	PLAN/PROFILE SHEET

MIXES AND APPLICATION RATE TABLES

A-2 SURFACE APPLICATION RATES			
BIT MATLS PR CT	BIT MATLS C&S CT	COVER COAT AGG	SEAL COAT AGG
0.375 GAL/SQ YD	0.375 GAL/SQ YD	25 LB/SQ YD	25 LB/SQ YD

PROCESSING MODIFIED SOIL APPLICATION RATES	
SLAG-MODIFIED PORTLAND CEMENT	
8.1 LBS/SY/INCH THICKNESS	
LIME-MODIFIED	
50.4 LBS/SY/INCH THICKNESS	

GENERAL NOTES

- 1) ALL ELEVATIONS ARE REFERENCED TO ELEVATIONS ESTABLISHED BY LAMAC ENGINEERING CO. FOR SECTION 00-11126-01-BR BRIDGE REPLACEMENT PROJECT.
- 2) WHERE SECTION OR SUBSECTION MONUMENTS ARE ENCOUNTERED, THE ENGINEER SHALL BE NOTIFIED BEFORE SUCH MONUMENTS ARE REMOVED. THE CONTRACTOR SHALL PROTECT AND CAREFULLY PRESERVE ALL PROPERTY MARKERS AND MONUMENTS UNTIL THE OWNER AND AUTHORIZED SURVEYOR OR AGENT HAS WITNESSED OR OTHERWISE REFERENCED THEIR LOCATION. IF THE ENGINEER DECIDES TO HAVE THE CONTRACTOR RESET THE MONUMENT, THIS WORK WILL BE PAID FOR IN ACCORDANCE WITH ARTICLE 109.04.
- 3) THE CONTRACTOR SHALL CONTACT J.U.L.I.E. PRIOR TO ANY EXCAVATION TO HAVE ALL PUBLIC AND PRIVATE UTILITIES LOCATED.
- 4) THE CONTRACTOR SHALL BE RESPONSIBLE FOR PROTECTING UTILITY PROPERTY FROM CONSTRUCTION OPERATIONS AS OUTLINED IN ARTICLE 107.26 OF THE STANDARD SPECIFICATIONS. THE J.U.L.I.E. NUMBER IS (800) 892-0123. A MINIMUM OF 48 HOURS ADVANCE NOTICE IS REQUIRED. SEE SPECIAL PROVISIONS FOR STATUS OF UTILITIES, WITH UTILITY COMPANIES LISTED.
- 5) ANY REFERENCE TO THE STANDARDS THROUGHOUT THE PLANS SHALL BE INTERPRETED TO BE THE LATEST STANDARDS OF THE DEPARTMENT AS INCLUDED IN THE PLANS.
- 6) ALL DETAILS IN THE PLANS SHALL GOVERN CONSTRUCTION OF THIS PROJECT, AND IN CASE OF CONFLICT WITH ANY STANDARD DRAWINGS INCLUDED, THE SAID DETAILS SHALL TAKE PRECEDENCE AND GOVERN.

REVISIONS	
NAME	DATE

ILLINOIS DEPARTMENT OF TRANSPORTATION

INDEX OF SHEETS
LIST OF STANDARDS &
GENERAL NOTES

SCALE: VERT.
HORIZ.
DATE: 11/01/07

DRAWN BY: K.M.S.
CHECKED BY: J.T.P.

SUMMARY OF QUANTITIES

SCHEDULE OF QUANTITIES

F.A. RTE.	SECTION	COUNTY	TOTAL SHEETS	SHEET NO.
		WAYNE	3	3
STA.	TO STA.			
FED. ROAD DIST. NO.	ILLINOIS	FED. AID PROJECT		

SUMMARY OF QUANTITIES			
CODE #	PAY ITEM	UNITS	TOTAL
20200410	EARTH EXCAVATION (SPECIAL)	CU YD	317
21400100	GRADING AND SHAPING DITCHES	FOOT	333
25000200	SEEDING, CLASS 2	ACRE	0.2
25000400	NITROGEN FERTILIZER NUTRIENT	POUND	14
25000500	PHOSPHORUS FERTILIZER NUTRIENT	POUND	14
25000600	POTASSIUM FERTILIZER NUTRIENT	POUND	14
25000700	AGRICULTURAL GROUND LIMESTONE	TON	0.30
30200350	PROCESSING MODIFIED SOIL 8"	SO YD	11,264
30201800	SLAG-MODIFIED PORTLAND CEMENT	TON	319
30201500	LIME	TON	288
40300100	BITUMINOUS MATERIALS (PRIME COAT)	GALLON	3,791
40300300	BITUMINOUS MATERIALS (COVER AND SEAL COATS)	GALLON	7,583
40300500	COVER COAT AGGREGATE	TON	127.3
40300600	SEAL COAT AGGREGATE	TON	127.3
67100100	MOBILIZATION	L SUM	1
Z0014700	CULVERT TO BE CLEANED	EACH	2

SEEDING SCHEDULE					
LOCATION (STATION TO STATION)	SEEDING CL 2	NITROGEN FERT NUTR	PHOSPHORUS FERT NUTR	POTASSIUM FERT NUTR	AGR GROUND LIMESTONE
	(ACRE)	(POUND)	(POUND)	(POUND)	(TON)
54+45, 15' RT TO 55+70, 15' RT	0.03	3	3	3	0.06
55+71, 15' LT TO 55+85, 35' LT	0.01	1	1	1	0.02
55+94, 15' RT TO 57+75, 15' RT	0.04	4	4	4	0.08
87+20, LT TO 90+30, LT	0.07	6	6	6	0.14
TOTAL =	0.2	14	14	14	0.30

ROAD RECONSTRUCTION SCHEDULE								
LOCATION (STATION TO STATION)	SQ. YD.	PROCESS MODIFIED SOIL 8"	SLAG MODIFIED PORTLAND CEMENT	LIME	BIT MATLS PR CT 0.375 GAL	BIT MATLS C&S CT 0.375 GAL	COVER COAT AGG 25 LB	SEAL COAT AGG 25 LB
		(SQ. YD.)	(TON)	(TON)	(GALLON)	(GALLON)	(TON)	(TON)
51+40.00 TO 72+16.49, 20' WIDTH	4,614	4,614	150		1,730	3,461	58	58
55+83 RT, (P.E.)	34				13	26	0.4	0.4
57+96 RT, (P.E.)	55				21	42	0.7	0.7
60+52 RT, (P.E.)	55				21	42	0.7	0.7
69+41.50 RT, (P.E.)	34				13	26	0.4	0.4
70+62 LT, (P.E.)	34				13	26	0.4	0.4
72+77.42 TO 86+64.67, 20' WIDTH	3,083	3,083	100		1,156	2,312	39	39
79+88 RT, (P.E.)	31				12	24	0.4	0.4
87+15.92 TO 90+37.38, 20' WIDTH	714	2,142	23	288	268	536	9	9
90+86.79 TO 95+85, 20' WIDTH	1,107	1,107	36		415	830	14	14
70+62 LT, (P.E.)	27				10	20	0.3	0.3
95+85 TO 96+94.65, VARIABLE WIDTH	318	318	10		119	238	4	4
TOTAL =		11,264	319	288	3,791	7,583	127.3	127.3

DRAINAGE SCHEDULE		
LOCATION (STATION TO STATION)	GRADING & SHAPING DITCH	CULVERT TO BE CLEANED
	(FOOT)	(EACH)
54+45, 15' RT TO 55+70, 15' RT	125	
55+47, 16' RT TO 55+71, 15' LT		1
55+70, 18' RT TO 55+94, 17' RT		1
55+71, 15' LT TO 55+85, 35' LT	27	
55+94, 15' RT TO 57+75, 15' RT	181	
TOTAL =	333	2

EARTH EXCAVATION (SPECIAL)			
LOCATION (STATION TO STATION)	TOTAL DEPTH	TOTAL WIDTH	VOLUME
	(INCHES)	(FEET)	(CU. YD.)
87+15.92 TO 90+37.38	16	20	317
TOTAL =			317

TRAFFIC CONTROL		
LOCATION (STATION TO STATION)	TRAF CONT-PROT BLR 22	TRAF CONT&PROT 701501
	(LSUM)	(LSUM)
ENTIRE SECTION	1 LSUM	1 LSUM
TOTAL =	1 LSUM	1 LSUM

REVISIONS	
NAME	DATE

ILLINOIS DEPARTMENT OF TRANSPORTATION

SUMMARY/SCHEDULE OF QUANTITIES

SCALE: VERT. _____
HORIZ. _____

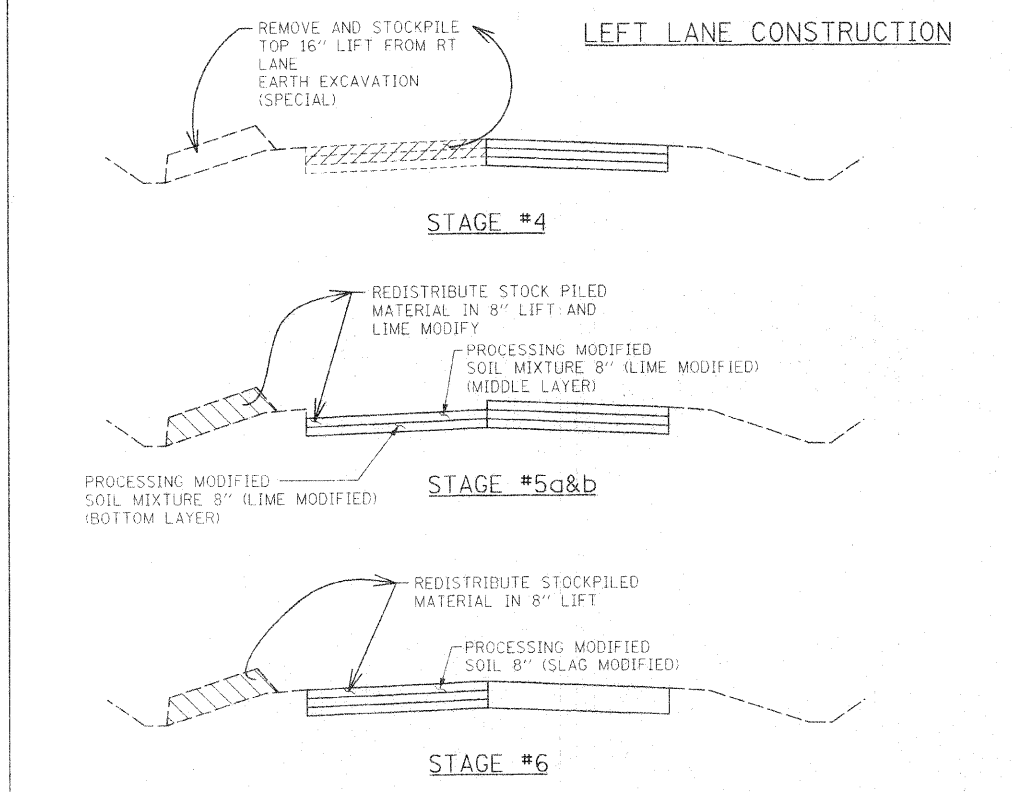
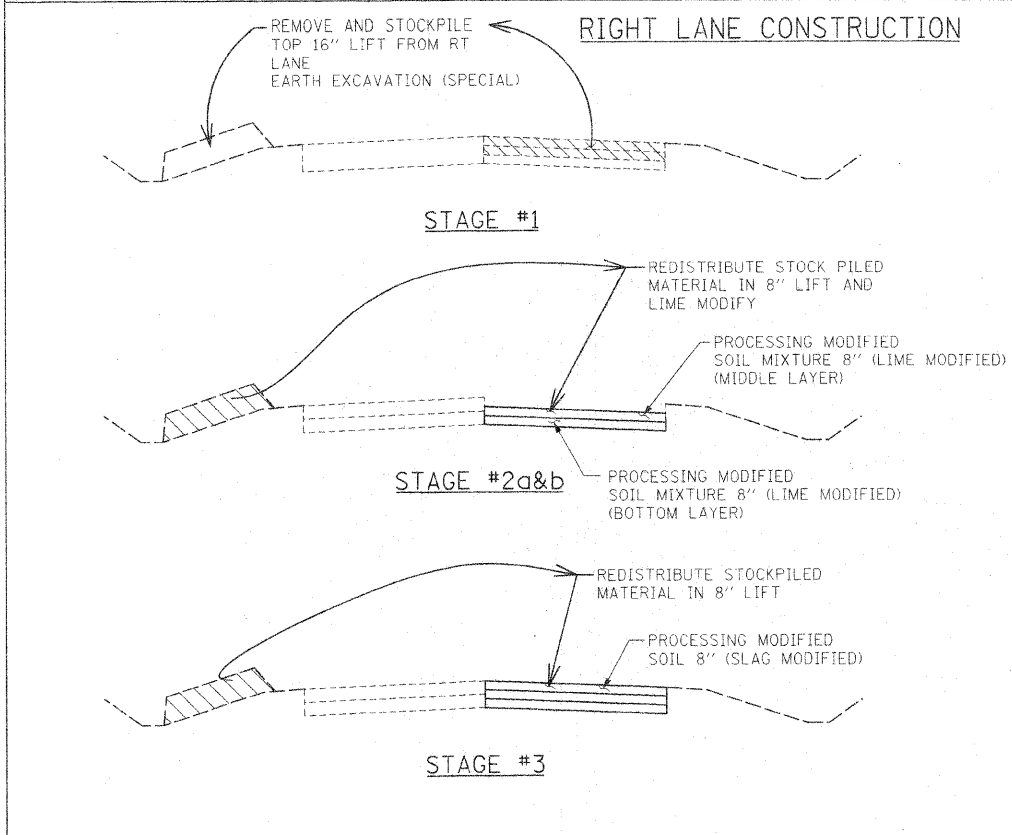
DATE: 11/01/07

DRAWN BY: K.M.S.
CHECKED BY: T.T.P.

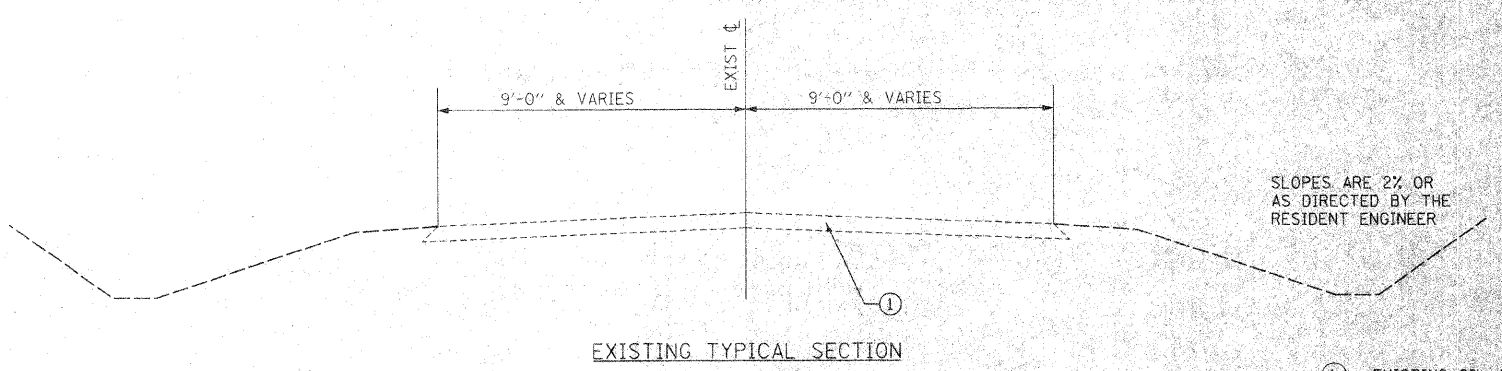
PLOT DATE = 11/01/07
FILE NAME = 44967 &
PLOT SCALE = 1/4"=1'-0"
USER NAME = USER

F.A. RTE.	SECTION	COUNTY	TOTAL SHEETS	SHEET NO.
		WAYNE	8	4
STA.		TO STA.		
FED. ROAD DIST. NO.		ILLINOIS FED. AID PROJECT		

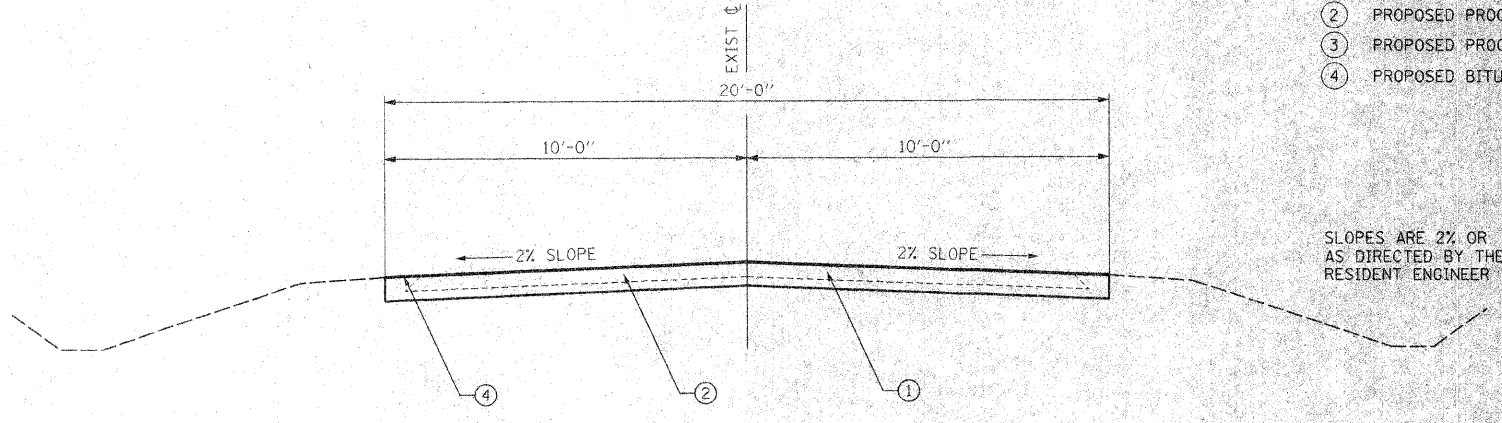
STAGING FOR LIME STABILIZED SOIL OPERATION



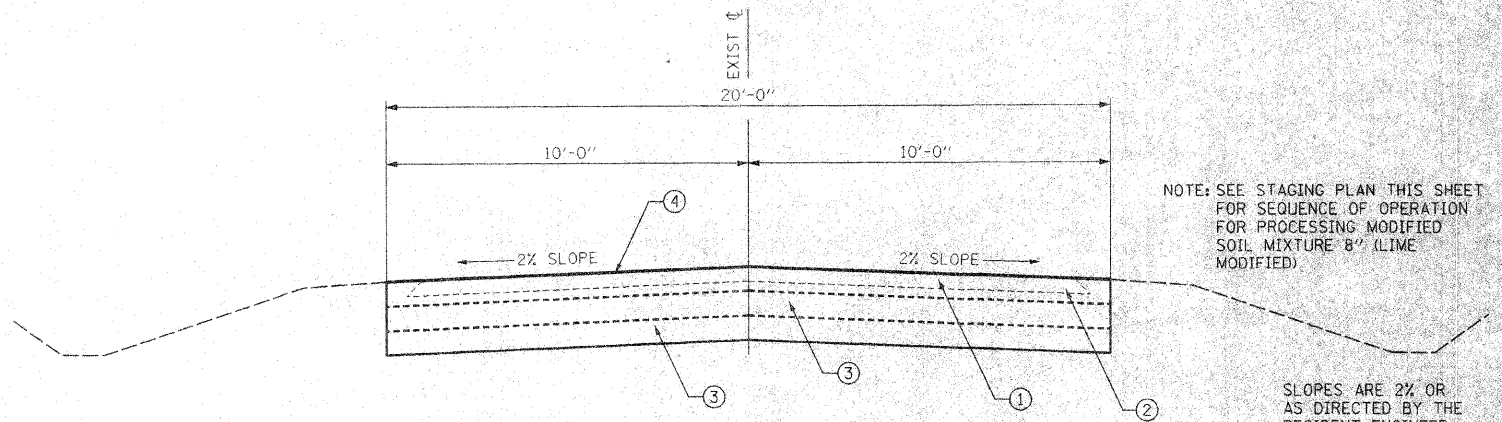
TYPICAL SECTIONS



- LEGEND**
- ① EXISTING OIL AND CHIP OVER AGGREGATE SURFACE (DEPTH UNKNOWN)
 - ② PROPOSED PROCESSING MODIFIED SOIL 8" (SLAG MODIFIED)
 - ③ PROPOSED PROCESSING MODIFIED SOIL 8" (LIME MODIFIED)
 - ④ PROPOSED BITUMINOUS SURFACE TREATMENT CLASS A-2



PROPOSED TYPICAL SECTION
 STA. 51+40.00 - STA. 72+16.49
 STA. 72+77.42 - STA. 86+64.67
 STA. 90+86.79 - STA. 96+94.65



PROPOSED TYPICAL SECTION
 STA. 87+15.92 - STA. 90+37.38

GRADING AND SHAPING DITCHES
 STA. 54+45 RT. TO STA. 55+70 RT.
 STA. 55+71 LT. TO STA. 55+85 LT.
 STA. 55+94 RT. TO STA. 57+75 RT.

REVISIONS	
NAME	DATE

ILLINOIS DEPARTMENT OF TRANSPORTATION

TYPICAL SECTIONS AND STAGING FOR LIME STABILIZED SOIL OPERATION

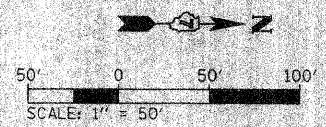
SCALE: VERT. _____
 HORIZ. _____

DATE: 11/01/07

DRAWN BY: S.O.X.
 CHECKED BY: T.P.

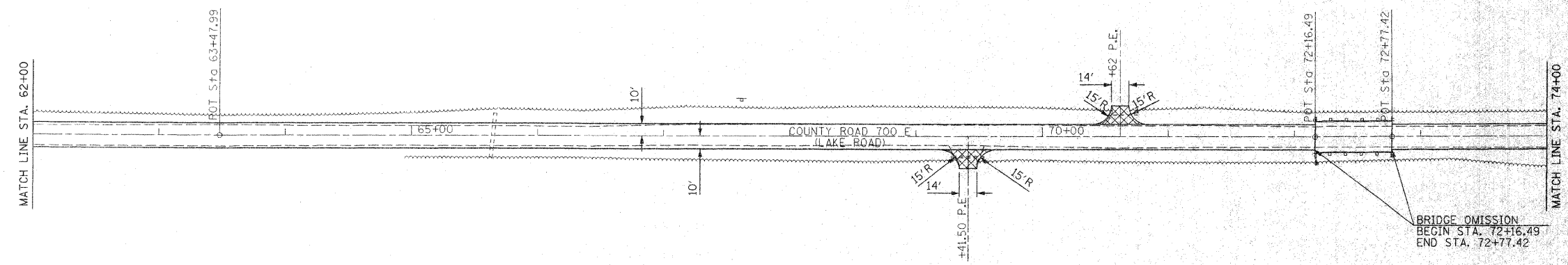
PLT DATE = 11/01/07
 FILE NAME = 11/01/07
 USER NAME = RUSBYR

P.A. RTE.	SECTION	COUNTY	TOTAL SHEETS	SHEET NO.
		WAYNE	8	6
STA. 62+00		TO STA. 74+00		
FED. ROAD DIST. NO.		ILLINOIS FED. AID PROJECT		



DATE	BY

NO.	DATE	BY

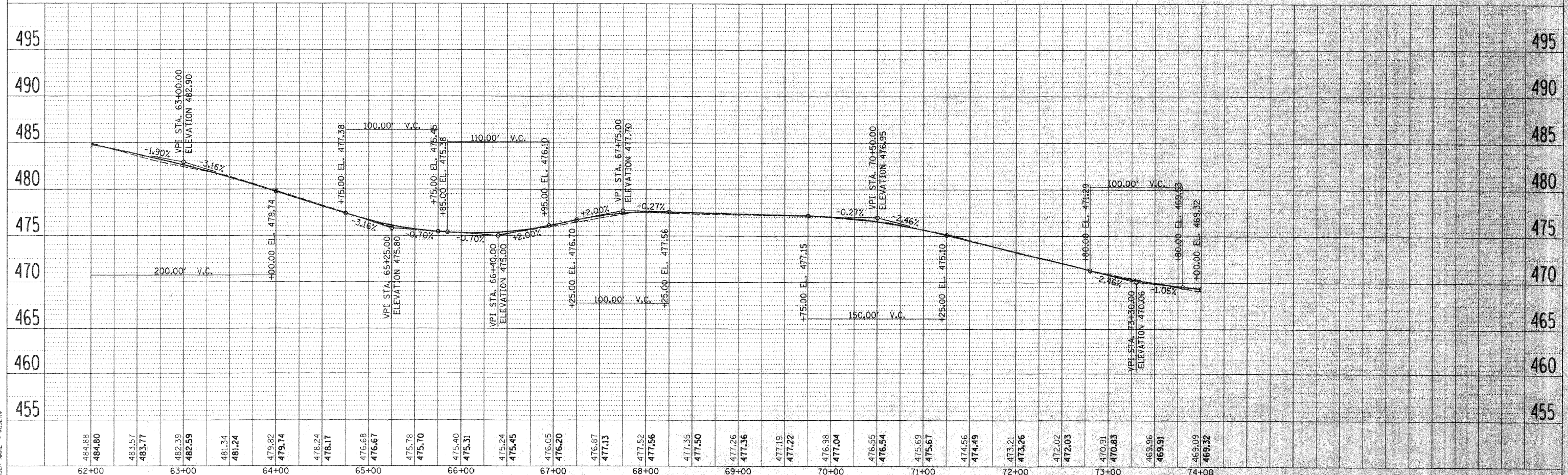


LEGEND

- A-2 SURFACE TREATMENT
- SEEDING, CLASS 2

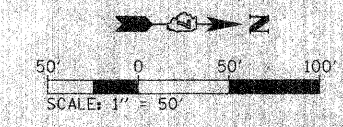
DATE	BY

NO.	DATE	BY

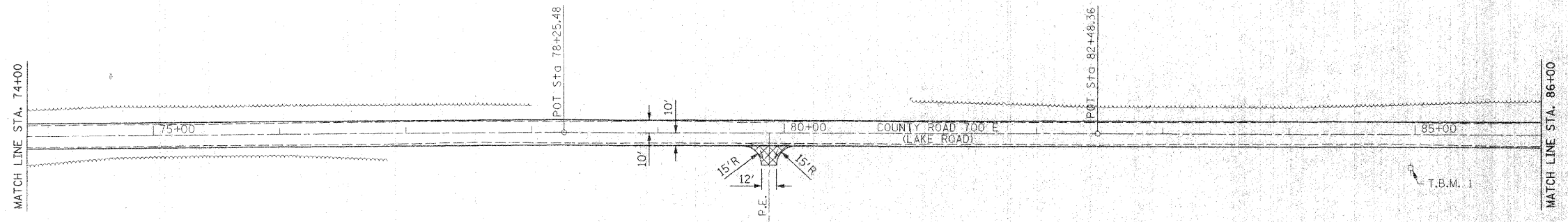


PLOT DATE = DATE
 PLOT SCALE = SCALE
 PLOT SCALE = SCALE
 USER NAME = USER

F.A. RTE.	SECTION	COUNTY	TOTAL SHEETS	SHEET NO.
		WAYNE	8	7
STA. 74+00		TO STA. 86+00		
ILLINOIS FED. AID PROJECT				



PLAN	SURVEYED	DATE
APPROVED		
BY		

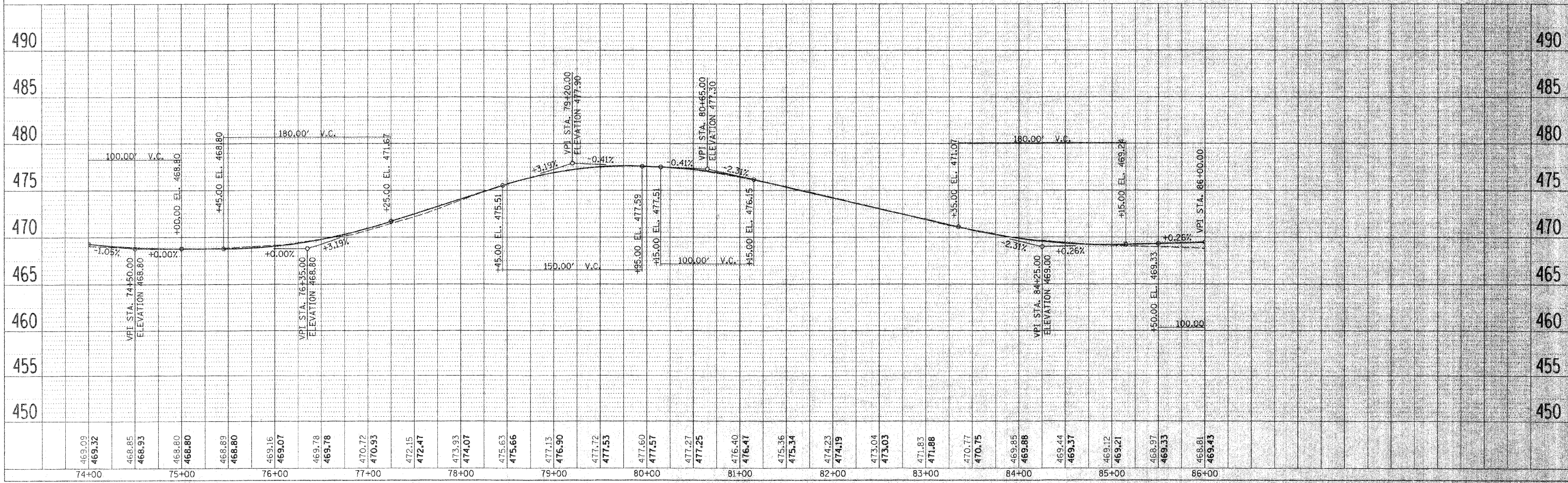


LEGEND

	A-2 SURFACE TREATMENT
	SEEDING, CLASS 2

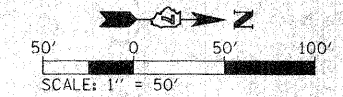
T.B.M. 1 : NAIL AND RING IN POWER POLE ON EAST SIDE OF COUNTY ROAD 700 E
ELEVATION = 469.24

PROFILE	SURVEYED	DATE
APPROVED		
BY		



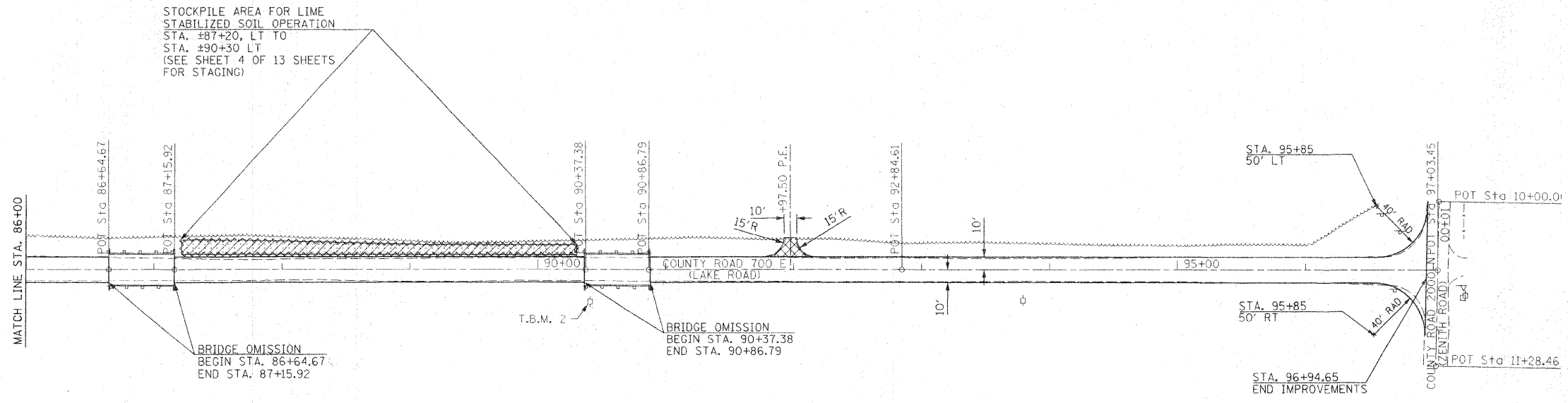
PLOT DATE = 8/20/18
FILE NAME = 81E1E18
PLOT SCALE = 1/8"=1'-0"
USER NAME = BUSER18

F.A. RTE.	SECTION	COUNTY	TOTAL SHEETS	SHEET NO.
		WAYNE	8	8
STA. 86+00		TO STA. 97+03.45		
FED. ROAD DIST. NO.		ILLINOIS FED. AID PROJECT		

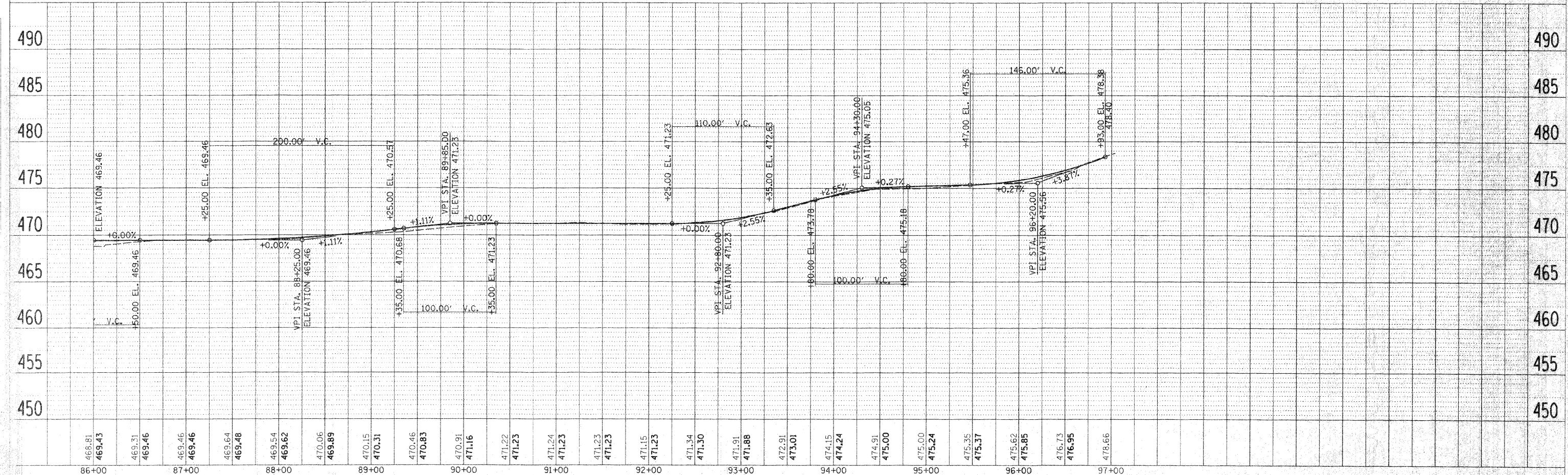


LEGEND

- A-2 SURFACE TREATMENT
- SEEDING, CLASS 2
- SOIL STORAGE AREA DURING LIME MODIFICATION PROCESS



T.B.M. 2: NAIL AND RING IN POWER POLE ON EAST SIDE OF COUNTY ROAD 700 E
ELEVATION : 468.81



COUNTY ROAD 700 E (LAKE ROAD)

DATE	BY
DATE	BY
DATE	BY

DATE	BY
DATE	BY
DATE	BY