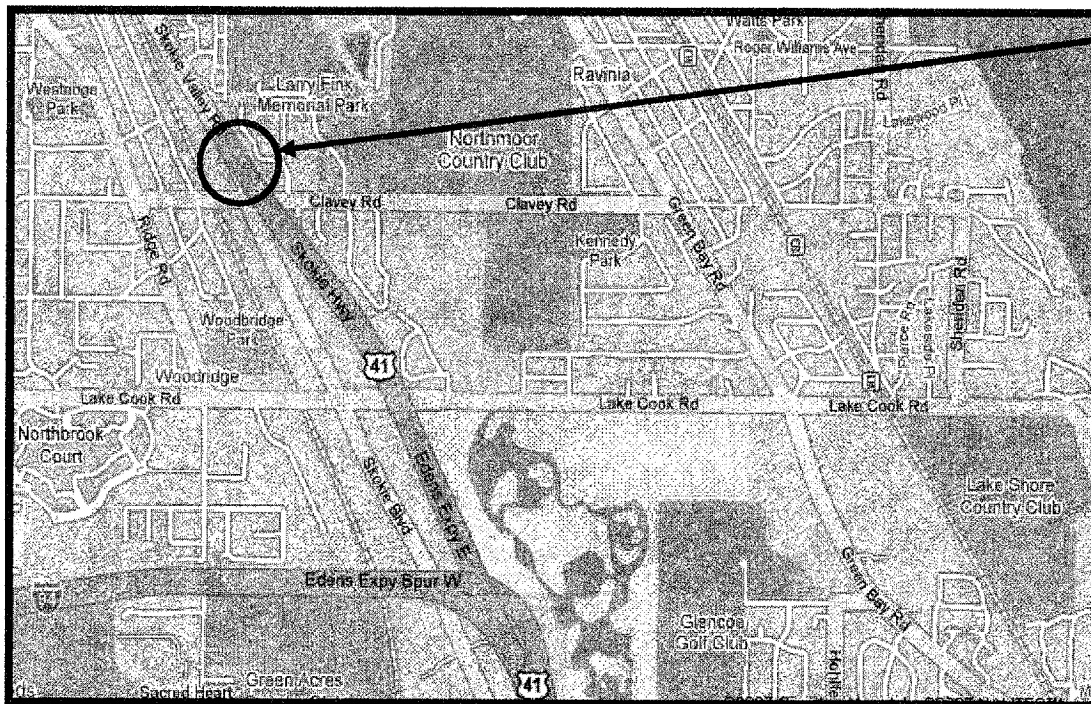


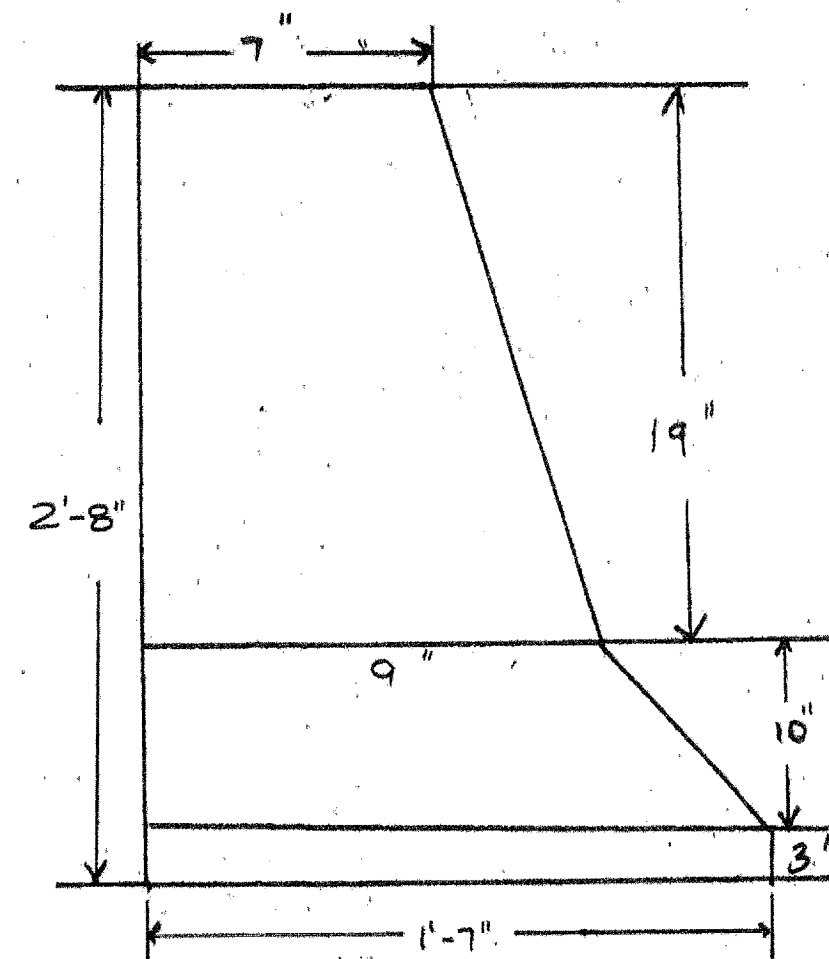
ROUTE	SECTION	COUNTY	TOTAL SHEETS	SHEET NUMBER
VARIOUS	2007-010 I	VARIOUS	19	8

WEST TOWNSHIP
R 14 E



T 39 N

LOCATION 2: US 41 SB RIGHT SIDE 0.2 MILES NORTH OF CLAVEY ROAD.



OVERALL LENGTH = 26'