

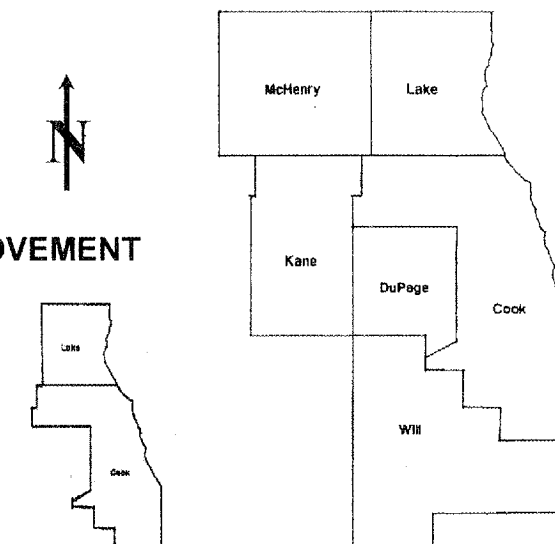
ROUTE	SECTION	COUNTY	TOTAL SHEETS	SHEET NUMBER
VARIOUS	2007-010 I	COOK & LAKE	19	1

D-91-195-07

FOR INDEX OF SHEETS SEE SHEET 2

STATE OF ILLINOIS
DEPARTMENT OF
TRANSPORTATION
DIVISION OF HIGHWAYS
DISTRICT ONE
PROPOSED HIGHWAY PLANS

LOCATION OF IMPROVEMENT
INDICATED THUS:



ROUTE: VARIOUS ROUTES DISTRICT ONE
SECTION: 2007-010 I
BRIDGE PARAPET & BARRIER WALL REPAIR
COOK & LAKE COUNTIES
C-91-195-07

STATE OF ILLINOIS
DEPARTMENT OF TRANSPORTATION
DIVISION OF HIGHWAYS

SUBMITTED: JANUARY, 2ND 20 08
Diane M. O'Keefe DEPUTY DIRECTOR OF HIGHWAYS, REGION ENGINEER
February 1, 20 08
Eric E. Harms INTERIM ENGINEER OF DESIGN AND ENVIRONMENT
February 1, 20 08
Christine M. Reed DIRECTOR, DIVISION OF HIGHWAYS

PRINTED BY THE AUTHORITY
OF THE STATE OF ILLINOIS

J.U.L.I.E.: JOINT UTILITY LOCATION
INFORMATION FOR EXCAVATION
 (800) 892-0123 OR 811

C.U.A.N.
CHICAGO UTILITY ALERT NETWORK
 (312)744-7000

CONTRACT NO. 60C26

DISTRICT ONE - DESIGN - PLAN PREPARATION
 KEN ENG (847) 705-4247

ROUTE	SECTION	COUNTY	TOTAL SHEETS	SHEET NUMBER
VARIOUS	2007-010 I	VARIOUS	19	2

INDEX OF SHEETS

- 1 TITLE SHEET
- 2 INDEX OF SHEETS, STATE STANDARDS AND GENERAL NOTES
- 3-4 SUMMARY OF QUANTITIES
- 5 TYPICAL SECTION FOR FULL DEPTH REPAIR
- 6 TYPICAL SECTION FOR HALF DEPTH REPAIR
- 7 - 18 LOCATION MAPS AND PLAN SHEETS
- 19 TRAFFIC CONTROL DETAILS FOR FREEWAY SHOULDER CLOSURES
PARTIAL RAMP CLOSURES

STATE STANDARDS

- 637001-03 CONCRETE BARRIER, DOUBLE FACE, 815 MM (32 IN.) HEIGHT
- 637006-01 CONCRETE BARRIER, DOUBLE FACE, 1065 MM (42 IN.) HEIGHT
- 701400-02 APPROACH TO LANE CLOSURE, FREEWAY/EXPRESSWAY
- 701401-04 LANE CLOSURE, FREEWAY/EXPRESWAY
- 701901 TRAFFIC CONTROL DEVICES

GENERAL & CITY OF CHICAGO NOTES

BEFORE STARTING ANY EXCAVATION, THE CONTRACTOR SHALL CALL "J.U.L.I.E." AT (800) 892-0123 OR 811 OR "CUAN" (CHICAGO UTILITY ALERT NETWORK) AT 312-744-7000 FOR FIELD LOCATIONS OF BURIED ELECTRIC, TELEPHONE & GAS FACILITIES. (48 HOURS NOTIFICATION REQUIRED).

THE CONTRACTOR WILL NOT BE ALLOWED TO SET UP A YARD OR FIELD OFFICE ON STATE OR TOLLWAY PROPERTY WITHOUT WRITTEN PERMISSION FROM THE DEPARTMENT.

THE CONTRACTOR SHALL CONTACT THE DISTRICT ONE TRAFFIC CONTROL SUPERVISOR AT (847) 705-4470 FOR ARTERIALS A MINIMUM OF 72 HOURS IN ADVANCE OF BEGINNING WORK.

IT SHALL BE THE CONTRACTORS' RESPONSIBILITY TO VERIFY ALL DIMENSIONS & CONDITIONS EXISTING IN THE FIELD PRIOR TO CONSTRUCTION & ORDERING OF MATERIAL.

THE CONTRACTOR SHALL BE REQUIRED TO PROVIDE ACCESS TO ABUTTING PROPERTY AT ALL TIMES DURING THE CONSTRUCTION OF THIS PROJECT.

ALL DAMAGE TO THE TRAFFIC CONTROL DEVICES OR MARKING AS A RESULT OF BRIDGE JOINT REPAIR SHALL BE REPLACED OR REPAIRED AT THE CONTRACTOR'S EXPENSE.

THESE PLANS HAVE BEEN PREPARED FROM NOTES RECEIVED FROM FIELD MAINTENANCE ENGINEERS.

ALL WORK ASSOCIATED WITH THE REMOVAL AND REPLACEMENT OF THE BARRIER WALL IS INCIDENTAL TO THE PAY ITEM CONCRETE BARRIER WALL REMOVAL AND REPLACEMENT.

DO NOT SCALE PLANS FOR CONSTRUCTION DIMENSIONS.

ILLINOIS DEPARTMENT OF TRANSPORTATION
INDEX OF SHEETS
STATE STANDARDS
GENERAL NOTES

	ROUTE	SECTION	COUNTY	TOTAL SHEETS	SHEET NO.
	VARIOUS	2007-010 I	VARIOUS	19	3

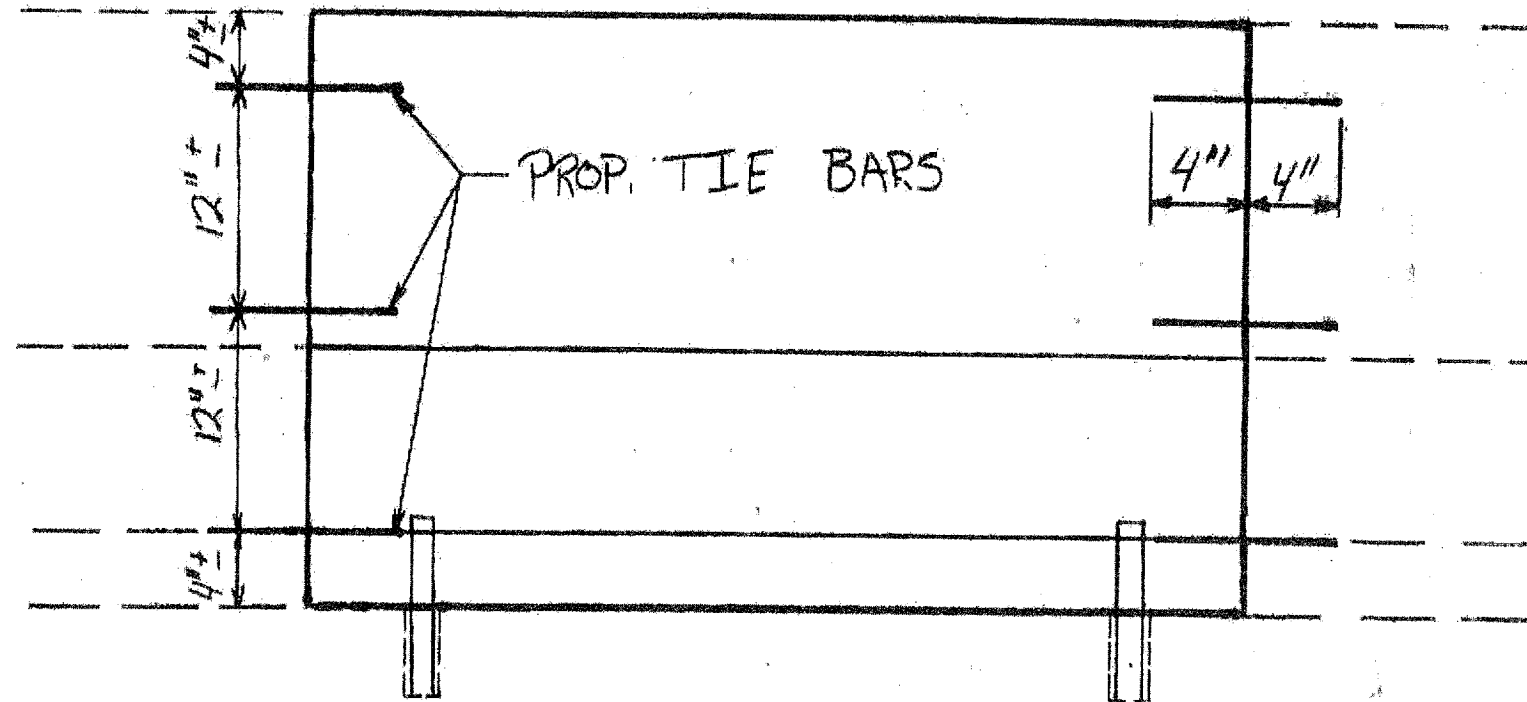
SUMMARY OF QUANTITIES			TOTAL QUANTITIES	COOK COUNTY				LAKE COUNTY
CODE NO.	ITEMS	UNITS	URBAN SFTY-4A 100% STATE	LOCATIONS 3 CLAIM NO. 734954	LOCATION 4 CLAIM NO. 734953	LOCATIONS (1,5,6,7,8,9,10,12)	SN: 016-0118 (LOCATION 11)	(LOCATION 2)
67100100	MOBILIZATION	L SUM	1	0.1	0.1	0.6	0.1	0.1
X0323723	CONCRETE BARRIER WALL REMOVAL AND REPLACEMENT, LOCATION 1	L SUM	1			1		
X0323724	CONCRETE BARRIER WALL REMOVAL AND REPLACEMENT, LOCATION 2	L SUM	1					1
X0323725	CONCRETE BARRIER WALL REMOVAL AND REPLACEMENT, LOCATION 3	L SUM	1	1				
X0323726	CONCRETE BARRIER WALL REMOVAL AND REPLACEMENT, LOCATION 4	L SUM	1		1			
X.0323727	CONCRETE BARRIER WALL REMOVAL AND REPLACEMENT, LOCATION 5	L SUM	1			1		
X0323728	CONCRETE BARRIER WALL REMOVAL AND REPLACEMENT, LOCATION 6	L SUM	1			1		
X0323729	CONCRETE BARRIER WALL REMOVAL AND REPLACEMENT, LOCATION 7	L SUM	1			1		
X0323730	CONCRETE BARRIER WALL REMOVAL AND REPLACEMENT, LOCATION 8	L SUM	1			1		
X0323731	CONCRETE BARRIER WALL REMOVAL AND REPLACEMENT, LOCATION 9	L SUM	1			1		

ILLINOIS DEPARTMENT OF TRANSPORTATION
SUMMARY OF QUANTITIES

ROUTE	SECTION	COUNTY	TOTAL SHEETS	SHEET NO.
VARIOUS	2007-010 I	VARIOUS	19	4

SUMMARY OF QUANTITIES			TOTAL QUANTITIES	COOK COUNTY				LAKE COUNTY
CODE NO.	ITEMS	UNITS	URBAN SFTY-4A 100% STATE	LOCATIONS 3 CLAIM NO. 734954	LOCATION 4 CLAIM NO. 734953	LOCATIONS (1,5,6,7,8,9,10,12)	SN: 016-0118 (LOCATION 11)	(LOCATION 2)
X0323732	CONCRETE BARRIER WALL REMOVAL AND REPLACEMENT, LOCATION 10	L SUM	1			1		
X0323733	CONCRETE BARRIER WALL REMOVAL AND REPLACEMENT, LOCATION 11	L SUM	1				1	
X0323734	CONCRETE BARRIER WALL REMOVAL AND REPLACEMENT, LOCATION 12	L SUM	1			1		
X7011015	TRAFFIC CONTROL AND PROTECTION (EXPRESSWAYS)	L SUM	1	0.1	0.1	0.6	0.1	0.1
							ILLINOIS DEPARTMENT OF TRANSPORTATION SUMMARY OF QUANTITIES	

ROUTE	SECTION	COUNTY	TOTAL SHEETS	SHEET NUMBER
VARIOUS	2007-0101	VARIOUS	19	5



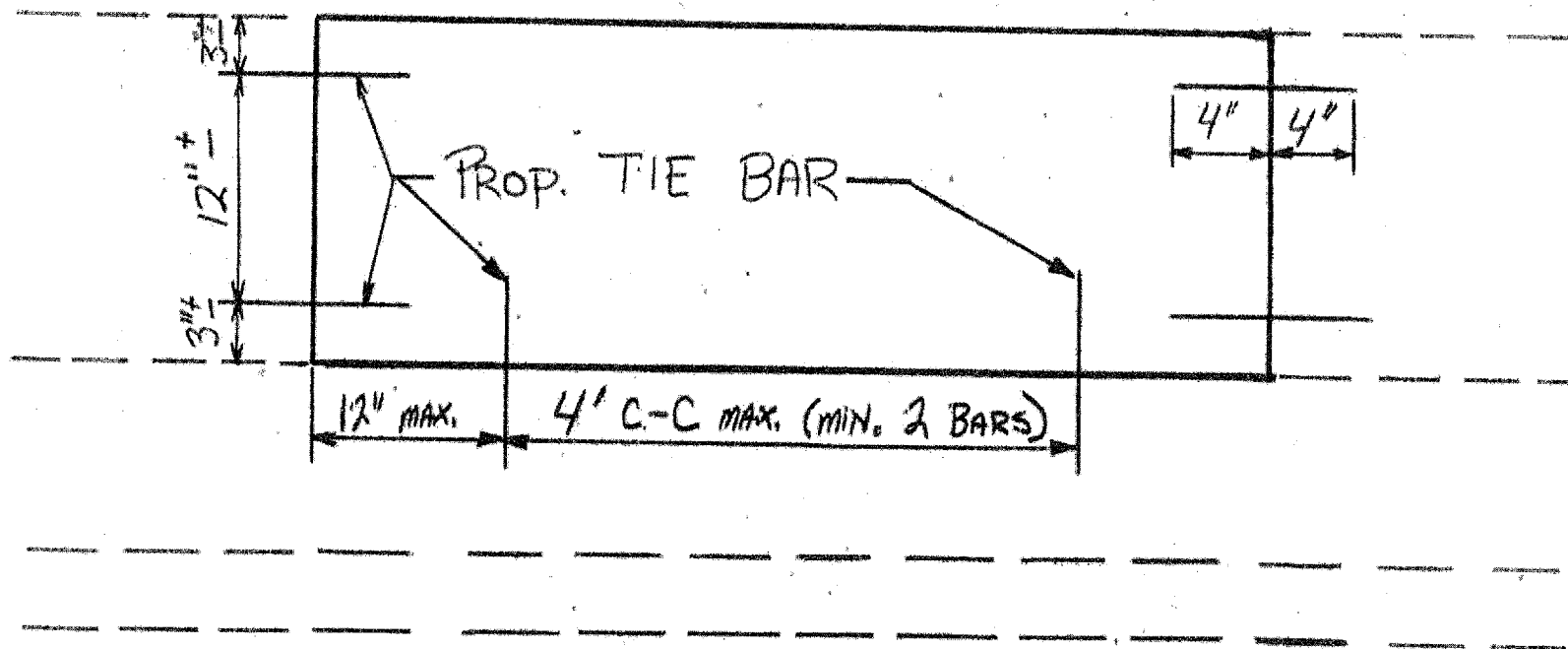
FULL DEPTH REPAIR

NOTE: ALL BARRIER WALL REPAIR SHALL BE COMPLETED IN ACCORDANCE WITH STATE STANDARD 637001-001 AND SECTION 637 OF THE STANDARD SPECIFICATIONS AND AS SHOWN ON THE PLANS. ALL PROPOSED DOWEL BARS AND TIE BARS SHALL BE DRILLED AND GROUTED IN PLACE. REINFORCEMENT SHALL BE INCLUDED AS SHOWN IN STANDARD 637001-01 AND DESCRIBED IN SECTION 637 OF THE STANDARD SPECIFICATIONS EXCEPT WHEN A REINFORCEMENT CAGE IS ENCOUNTERED. IN SUCH A CASE, THE CONTRACTOR SHALL REMOVE THE DAMAGED PORTIONS OF THE CAGE AND SHALL REPLACE IT WITH BARS OF THE SAME SIZE AND SPACING. THE SCOPE OF REPAIR AT EACH LOCATION SHALL BE AS SHOWN ON THE PLANS AND APPROVED BY THE ENGINEER PRIOR TO CONSTRUCTION.

ILLINOIS DEPARTMENT OF
TRANSPORTATION

TIE BAR FULL DEPTH REPAIR

ROUTE	SECTION	COUNTY	TOTAL SHEETS	SHEET NUMBER
VARIOUS	2007-0101	VARIOUS	19	6



FOR LOCATIONS 10 AND 11

HALF DEPTH REPAIR

NOTE: ALL BARRIER WALL REPAIR SHALL BE COMPLETED IN ACCORDANCE WITH STATE STANDARD 637001-001 AND SECTION 637 OF THE STANDARD SPECIFICATIONS AND AS SHOWN ON THE PLANS. ALL PROPOSED DOWEL BARS AND TIE BARS SHALL BE DRILLED AND GROUTED IN PLACE. REINFORCEMENT SHALL BE INCLUDED AS SHOWN IN STANDARD 637001-01 AND DESCRIBED IN SECTION 637 OF THE STANDARD SPECIFICATIONS EXCEPT WHEN A REINFORCEMENT CAGE IS ENCOUNTERED. IN SUCH A CASE, THE CONTRACTOR SHALL REMOVE THE DAMAGED PORTIONS OF THE CAGE AND SHALL REPLACE IT WITH BARS OF THE SAME SIZE AND SPACING. THE SCOPE OF REPAIR AT EACH LOCATION SHALL BE AS SHOWN ON THE PLANS AND APPROVED BY THE ENGINEER PRIOR TO CONSTRUCTION.

ILLINOIS DEPARTMENT OF
TRANSPORTATION

TIE BAR HALF DEPTH REPAIR

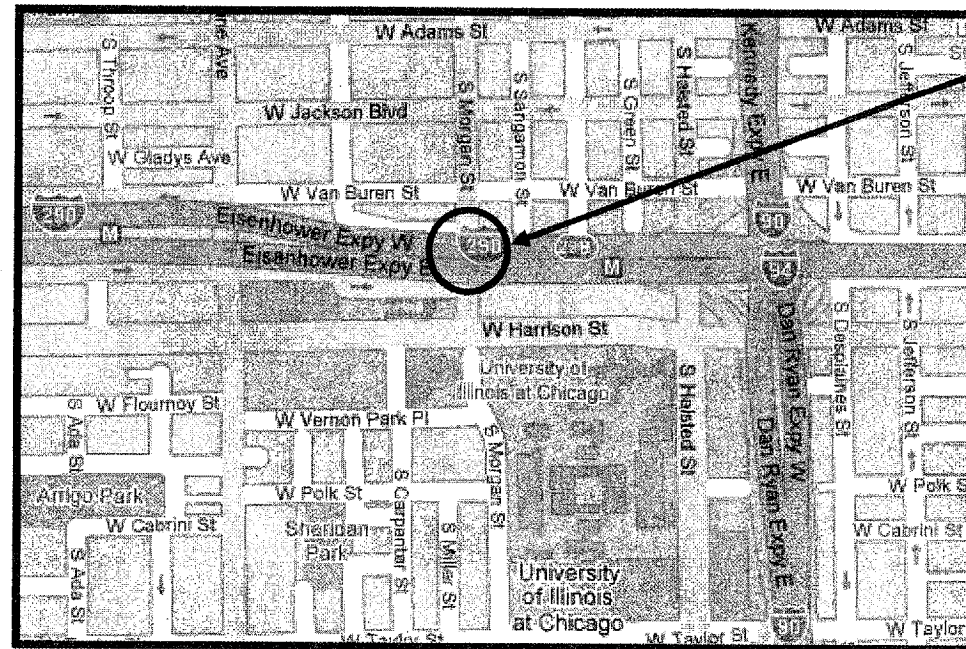
REV.

ROUTE	SECTION	COUNTY	TOTAL SHEETS	SHEET NUMBER
VARIOUS	2007-010 I	VARIOUS	19	7

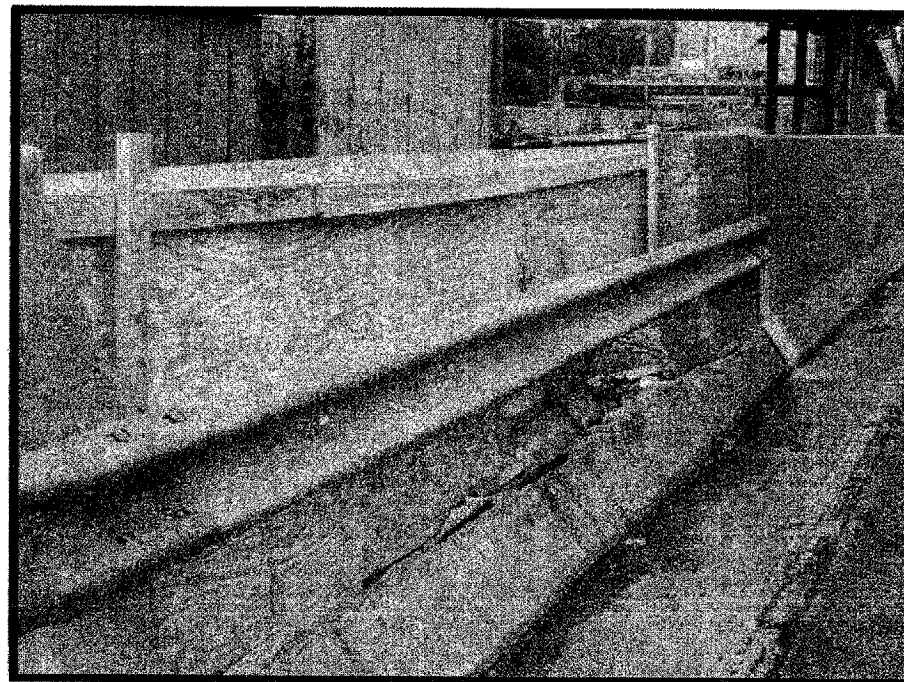
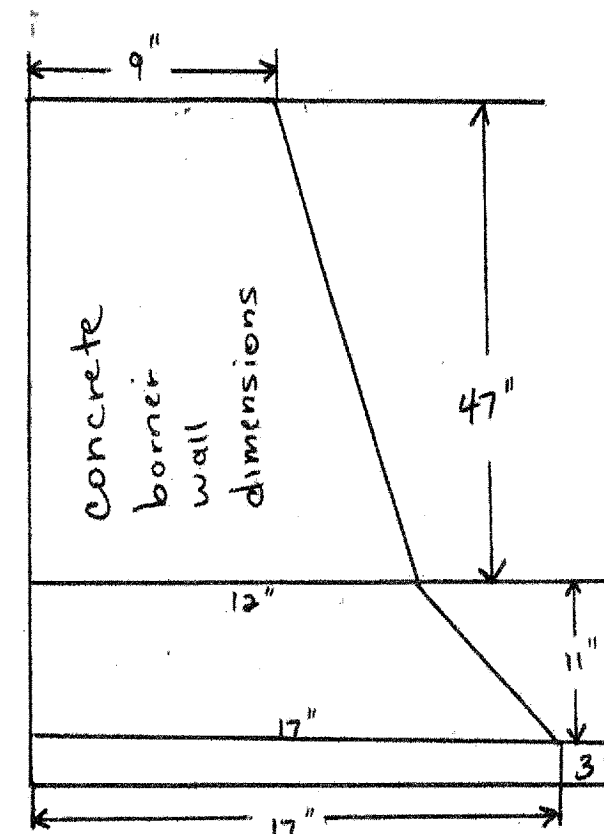
WEST TOWNSHIP

R 14 E

T 39 N



LOCATION 1: EASTBOUND I-290 @ MORGAN



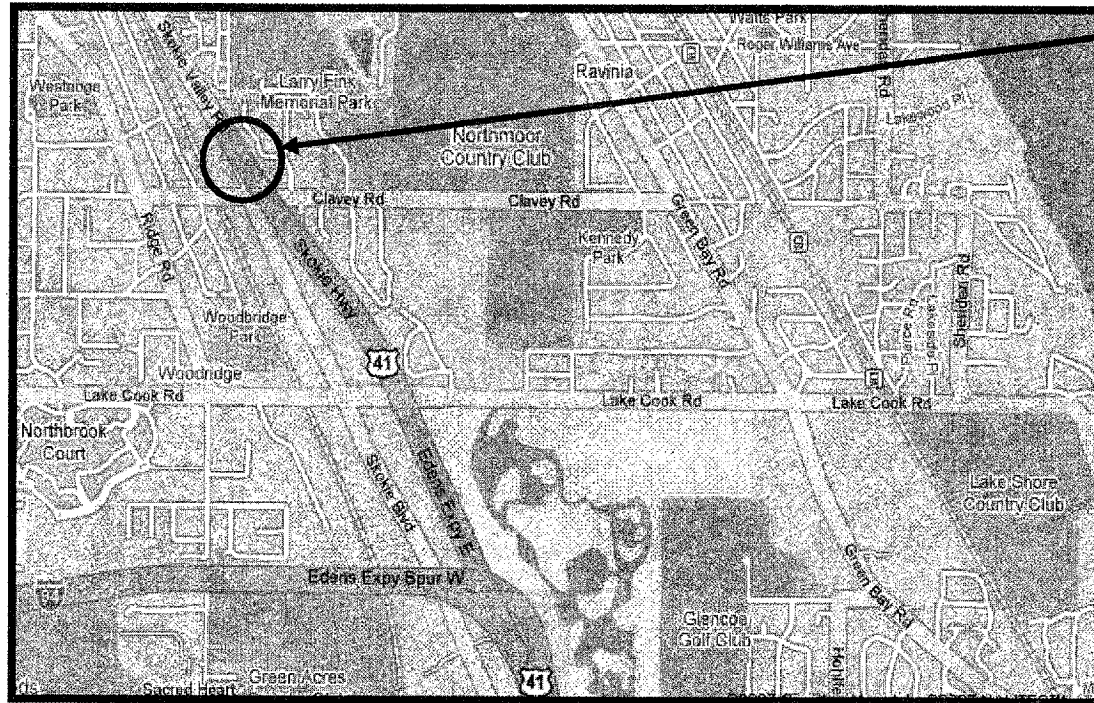
1- 4" PVC PIPE W/ ELECTRICAL WIRES FOR OVERHEAD LIGHTING IS CASED IN BOTTOM OF WALL. (MEADE ELECTRIC)

EXISTING BROKEN PIECES OF CONCRETE BEHIND WALL HAVE TO BE REMOVED. WORK MUST BE COORDINATED WITH THE CTA DUE TO RAIL POSITION.

OVERALL LENGTH = 31'

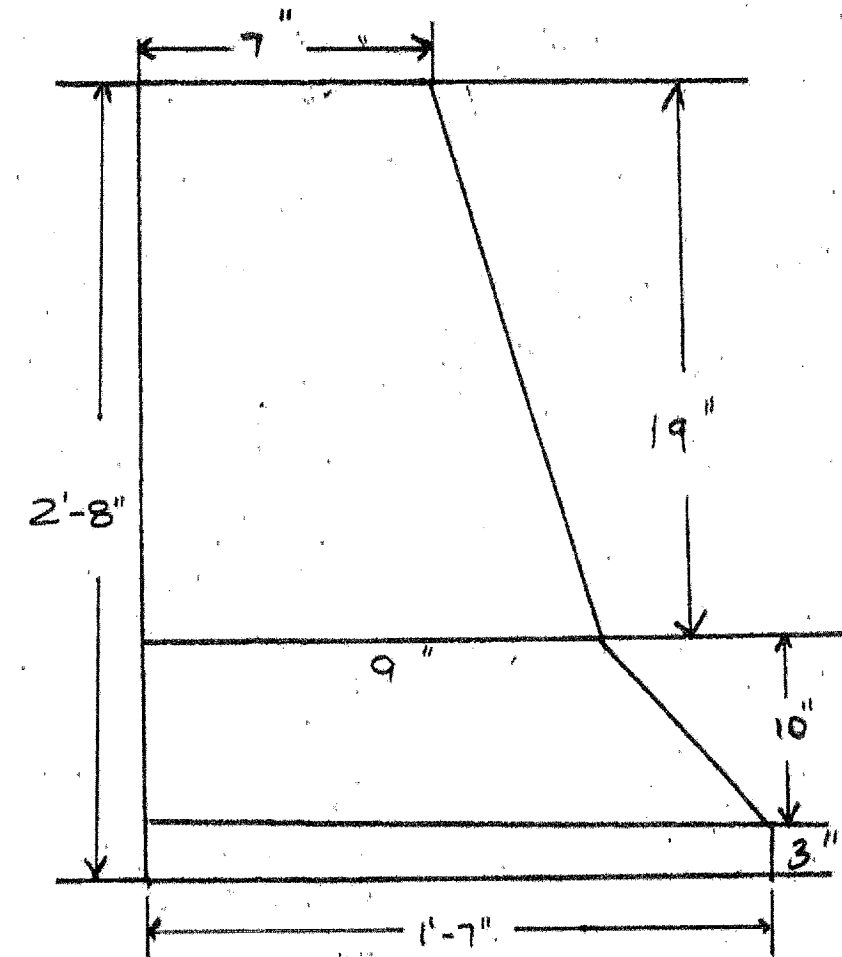
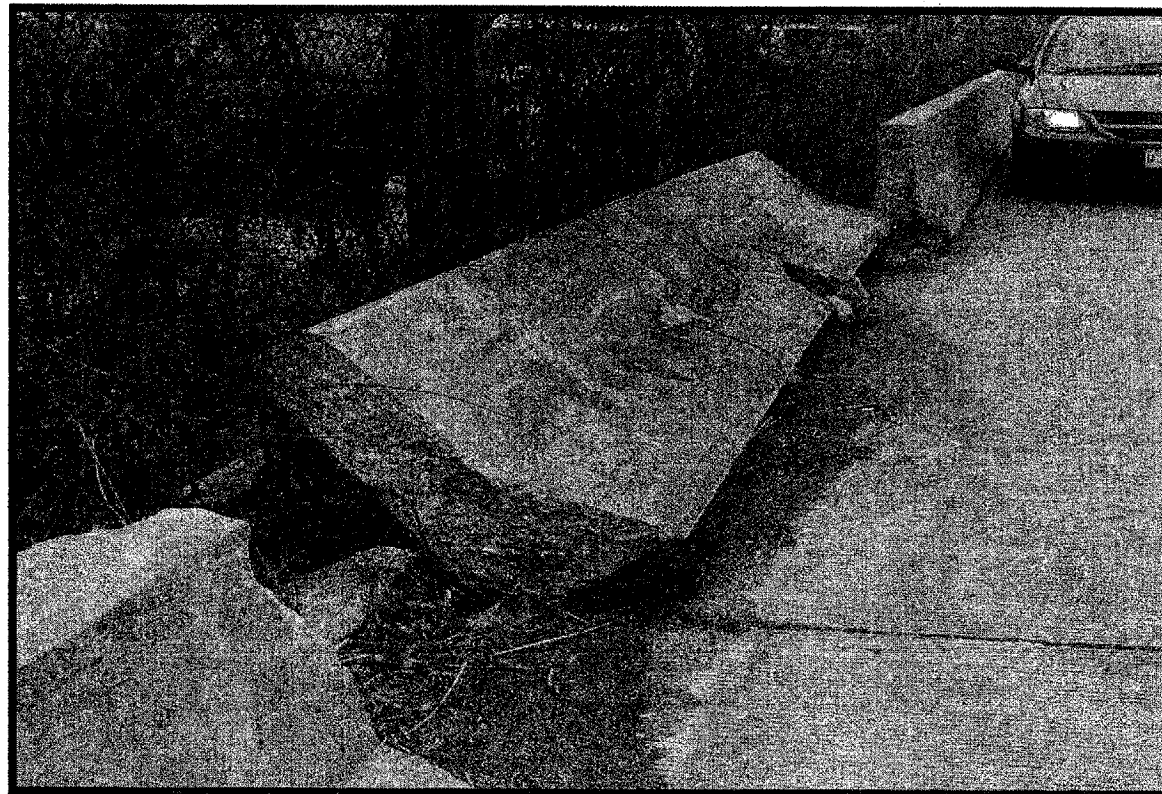
ROUTE	SECTION	COUNTY	TOTAL SHEETS	SHEET NUMBER
VARIOUS	2007-010 I	VARIOUS	19	8

WEST TOWNSHIP
R 14 E



T 39 N

LOCATION 2: US 41 SB RIGHT SIDE 0.2 MILES NORTH OF CLAVEY ROAD.



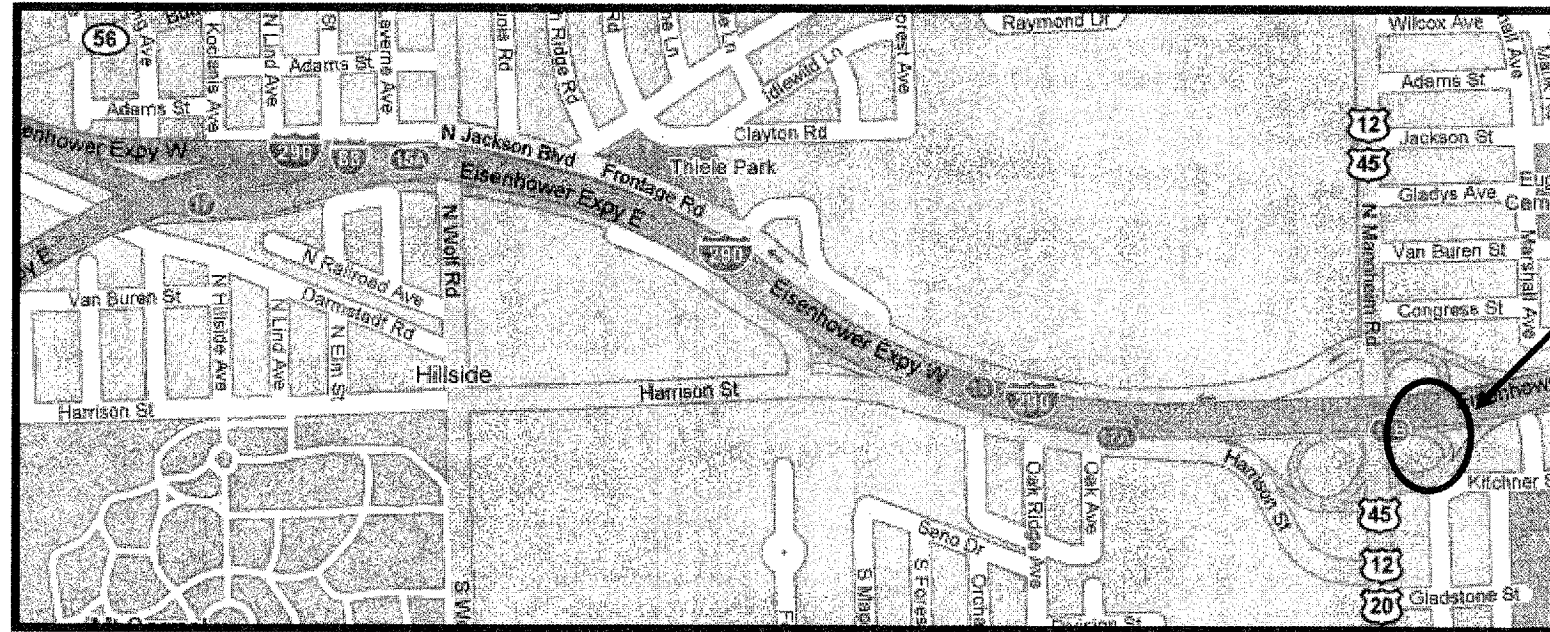
OVERALL LENGTH = 26'

ROUTE	SECTION	COUNTY	TOTAL SHEETS	SHEET NUMBER
VARIOUS	2007-0101	VARIOUS	19	9

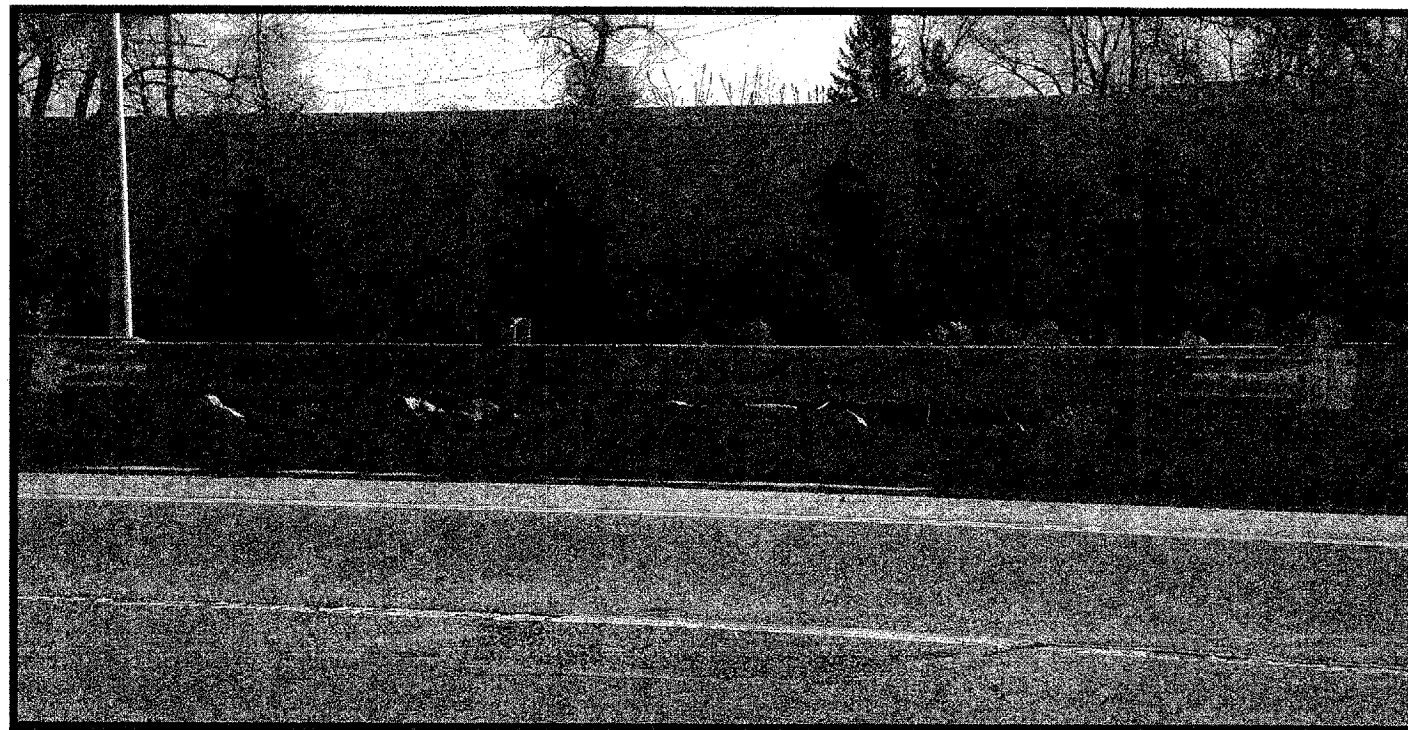
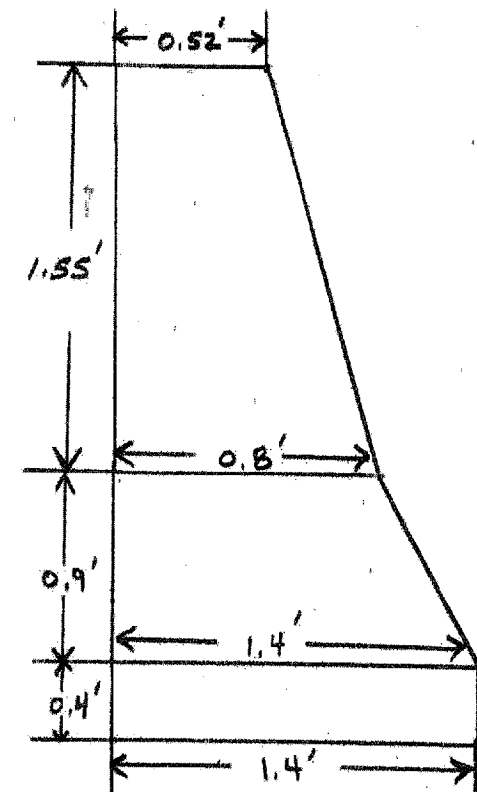
PROVISO TOWNSHIP

R 12 E

T 39 N



LOCATION 3: I-290/ I-88: EISENHOWER EXPRESSWAY COLLECTOR RAMP TO NB MANNHEIM EXIT



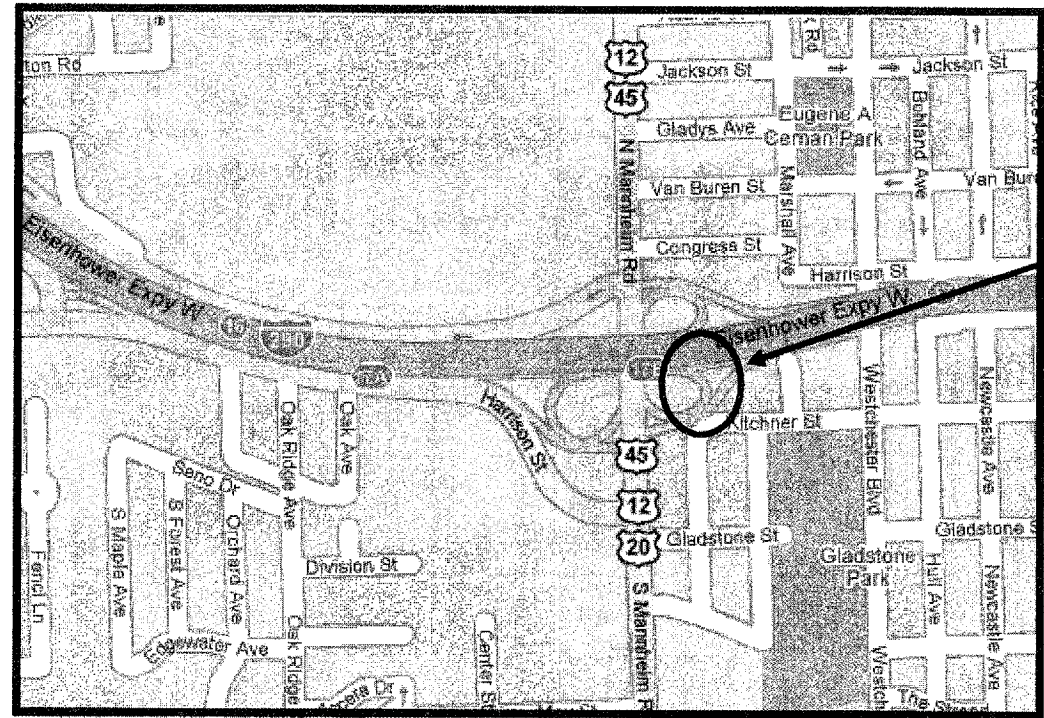
OVERALL LENGTH = 40'

ROUTE	SECTION	COUNTY	TOTAL SHEETS	SHEET NUMBER
VARIOUS	2007-0101	VARIOUS	19	10

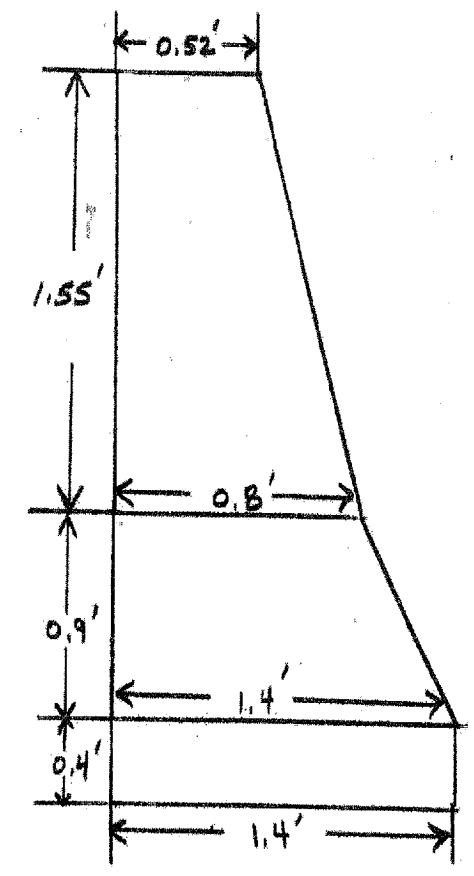
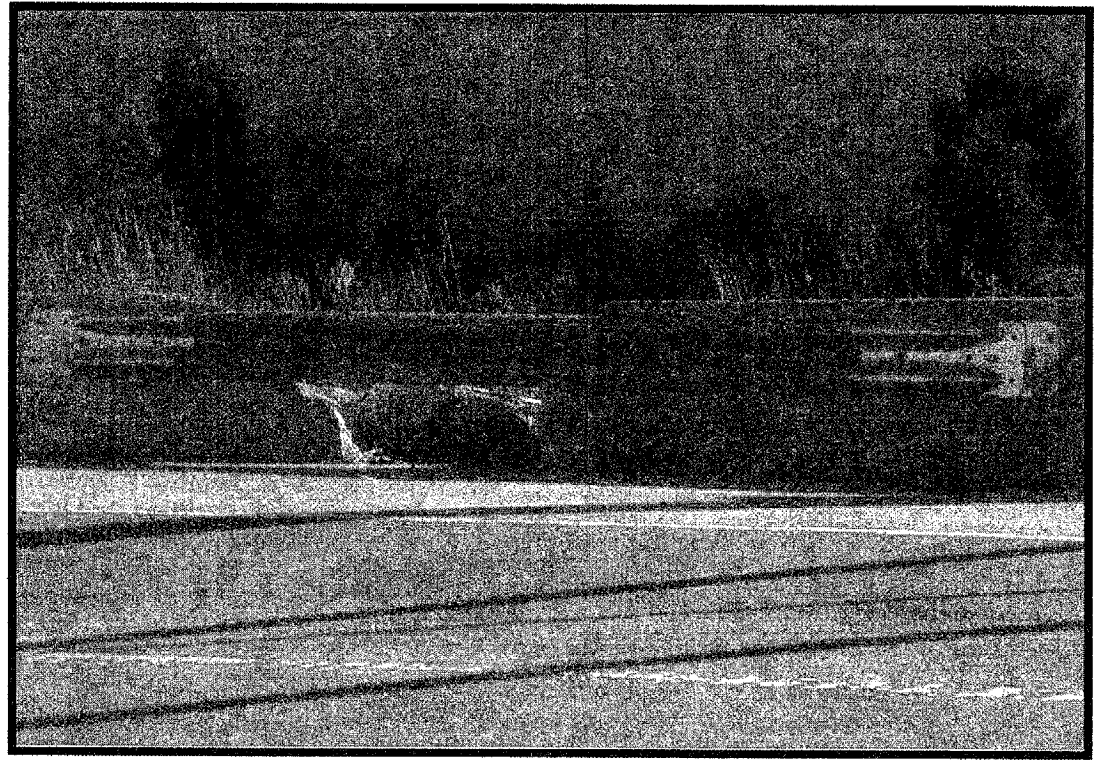
PROVISO TOWNSHIP

R 12 E

T 39 N



LOCATION 4: I-290: EISENHOWER EXPRESSWAY RAMP TO MANNHIEM CD



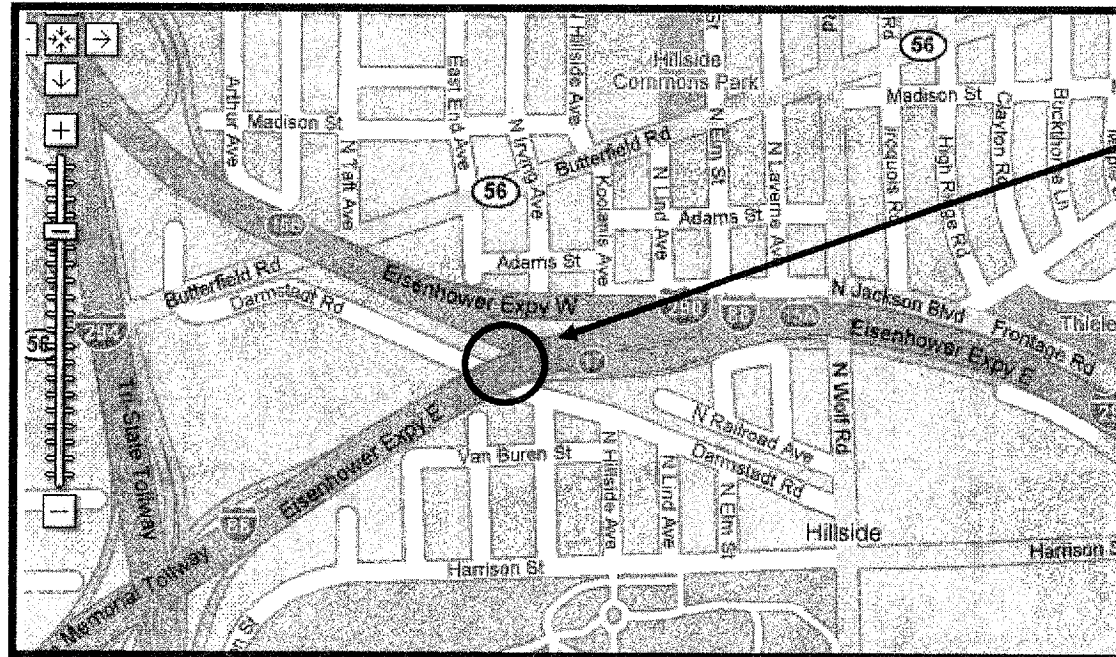
OVERALL LENGTH = 36'

ROUTE	SECTION	COUNTY	TOTAL SHEETS	SHEET NUMBER
VARIOUS	2007-010 I	VARIOUS	19	11

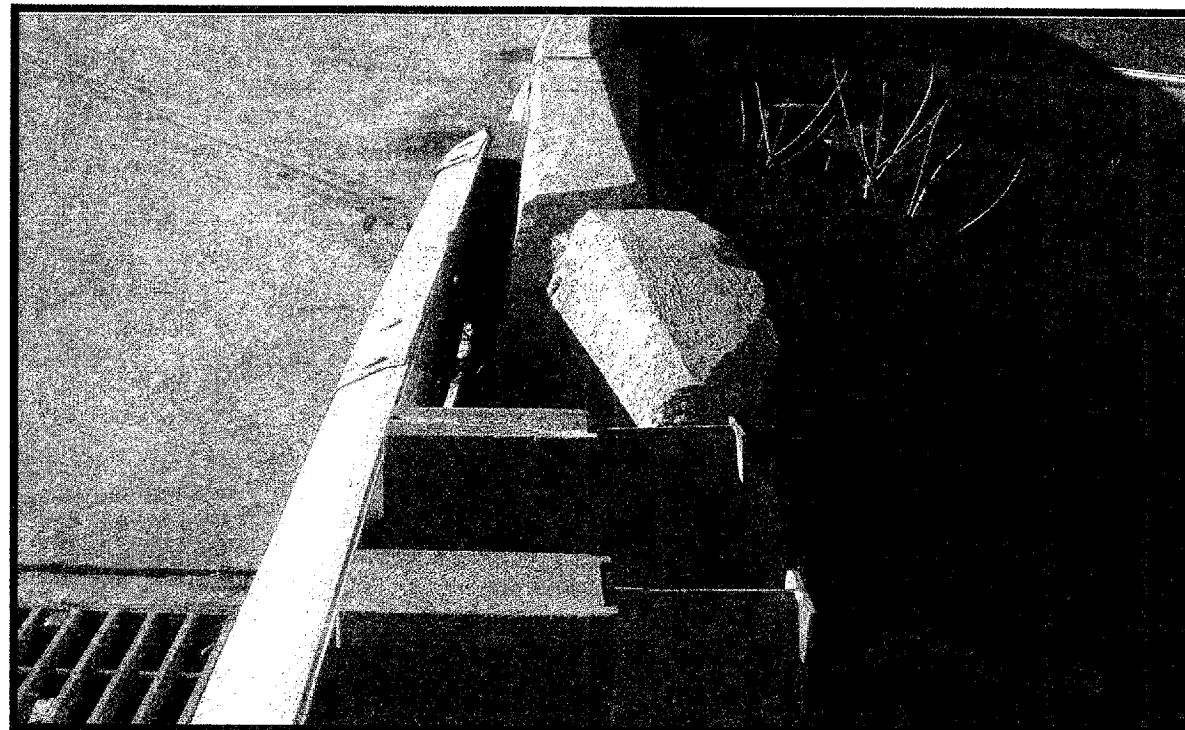
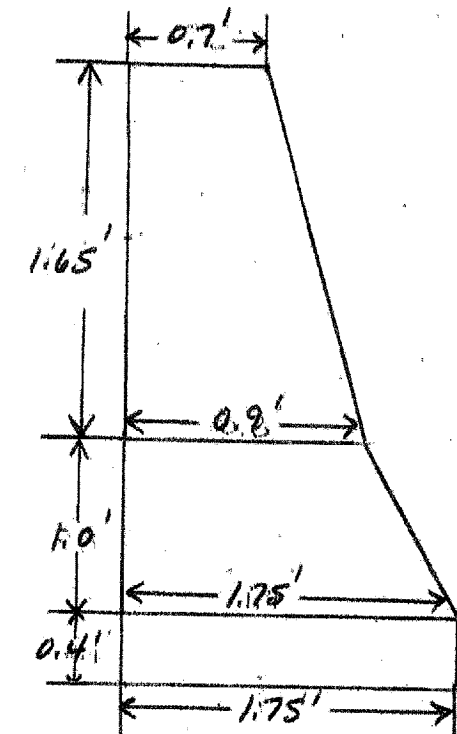
PROVISO TOWNSHIP

R 12 E

T 39 N



LOCATION 5: I-290: EISENHOWER EXPRESSWAY
LEFT SHOULDER, ON THE EAST SIDE BRIDGE
APPROACH OF THE ROOSEVELT ROAD
EXTENSION I-88 BRIDGE CREEK.



STEEL PLATE BEAM GUARDRAIL (TYP 6) IS ATTACHED TO THE BARRIER WALL/PARAPET NEEDS TO BE REMOVED AND REINSTALLED.

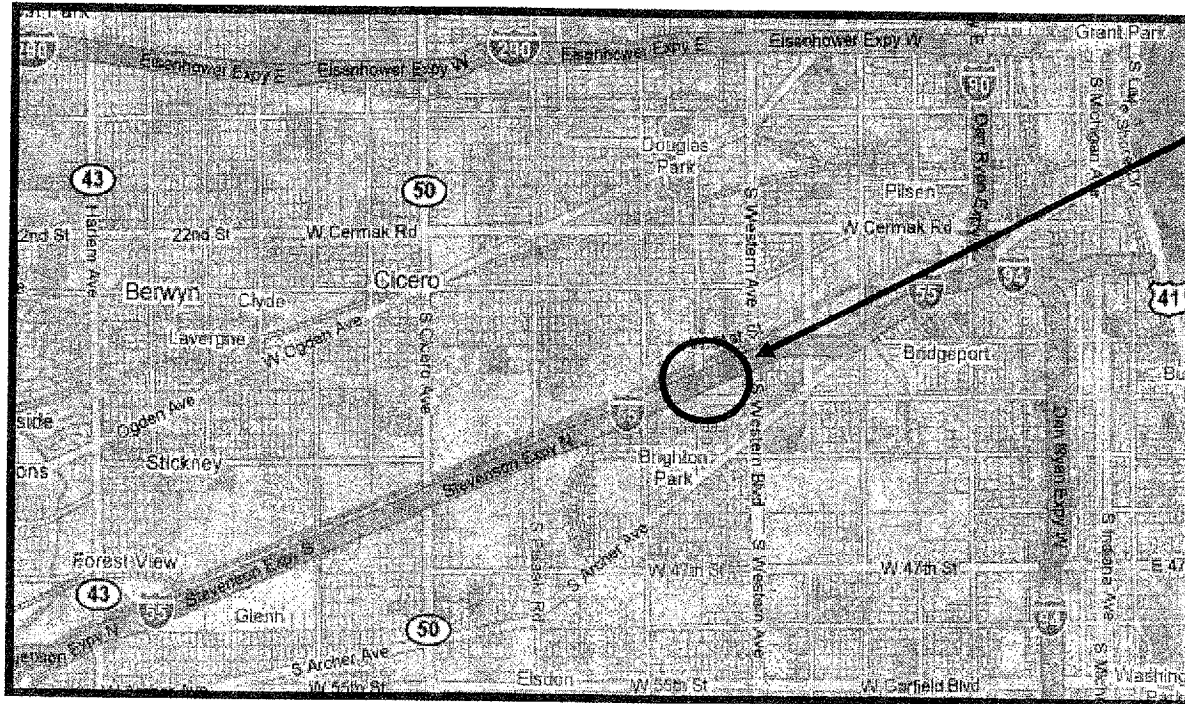
OVERALL LENGTH = 11'

ROUTE VARIOUS	SECTION 2007-010 I	COUNTY VARIOUS	TOTAL SHEETS 18	SHEET NUMBER 12
------------------	-----------------------	-------------------	-----------------------	-----------------------

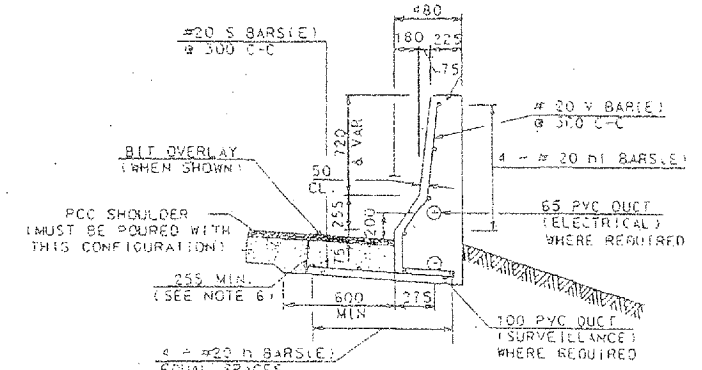
SOUTH TOWNSHIP

R 13 E

T 39 N



LOCATION 6: I-55: STEVENSON EXPRESSWAY
SOUTH WEST BOUND +/- 360' WEST OF WEST
ABUTMENT WESTERN AVENUE BRIDGE,
LEFT SIDE 0.3M EAST OF CALIFORNIA

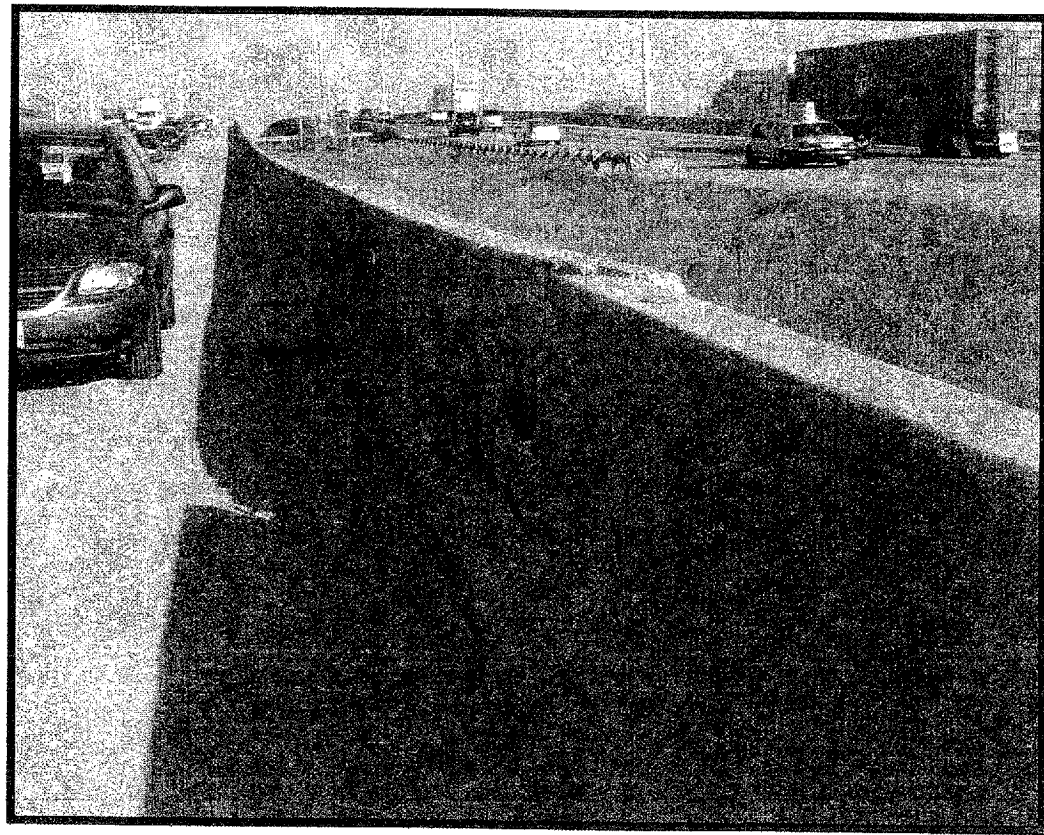


CONC BAR 1F225T1050 H-REINF.
CONCRETE BARRIER, SINGLE FACE,
225 TOP, 1050 HEIGHT, REINFORCED
(OR)
CONC BAR 1F225T1050 HV-REINF.
CONCRETE BARRIER, SINGLE FACE,
225 TOP, 1050 HEIGHT (VARIABLE), REINFORCED

FILL SECTION

FILL SECTION				
REINFORCING BARS 6.1 m SECTION				
BAR	NO.	SIZE	LENGTH	SHAPE
h	4	#20	5.95 m	—
s	21	#20	1.00 m	—
h1	4	#20	5.95 m	—
v	21	#20	1.63 m	⌋
REINFORCING BARS (EXCLUDING P.C.C.)			Kg	243

LONGITUDINAL BARS SHOULD NOT
EXTEND THROUGH JOINTS.



OVERALL LENGTH = 26'

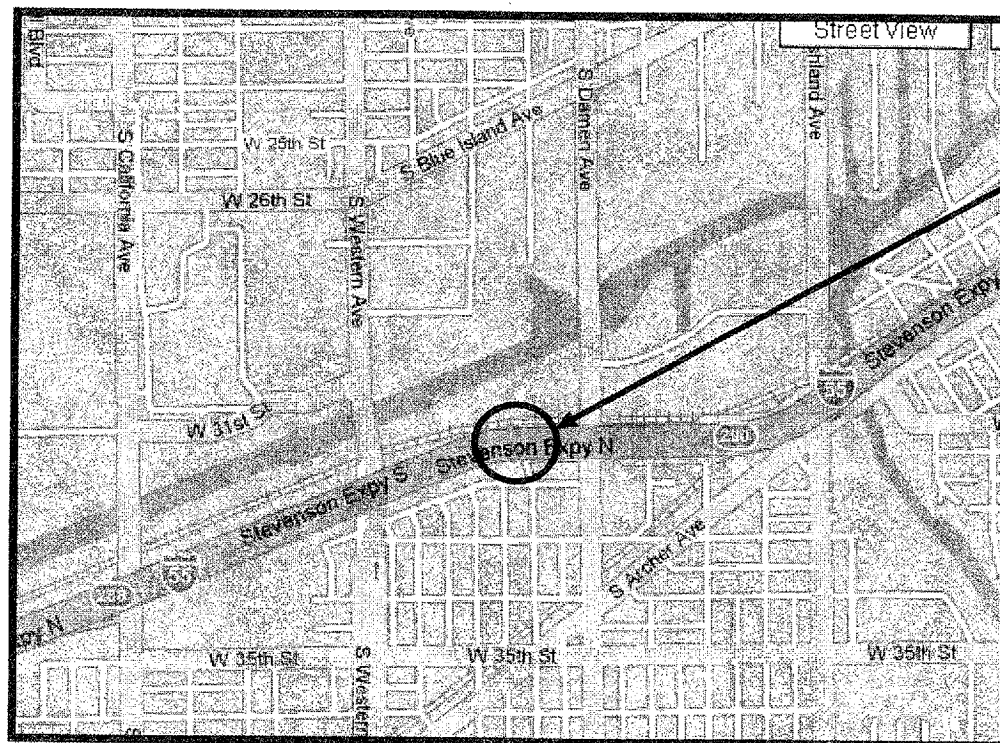
Above measurements in the existing detail are in Metric, and should be converted to English Units. The proposed reinforcing bars shall be included in the cost for Concrete Barrier Wall Removal and Replacement.

ROUTE VARIOUS	SECTION 2007-0101	COUNTY VARIOUS	TOTAL SHEETS 18	SHEET NUMBER 13
------------------	----------------------	-------------------	--------------------	--------------------

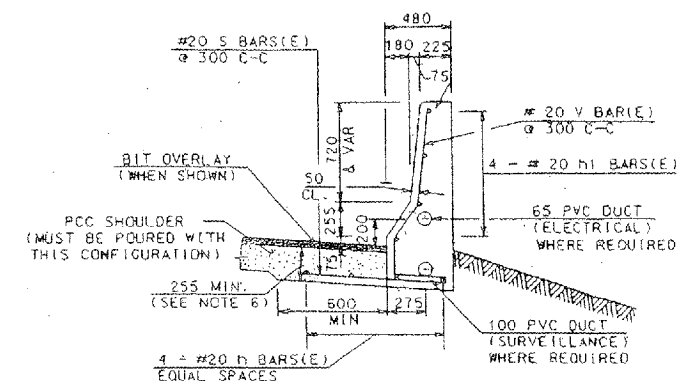
SOUTH TOWNSHIP

R 14 E

T 39 N



LOCATION 7: I-55: STEVENSON EXPRESSWAY
NORTH EAST BOUND, 0.3M WEST OF DAMEN
AVENUE, LEFT SIDE 80'. EAST OF
ABUTMENT WESTERN AVENUE BRIDGE.



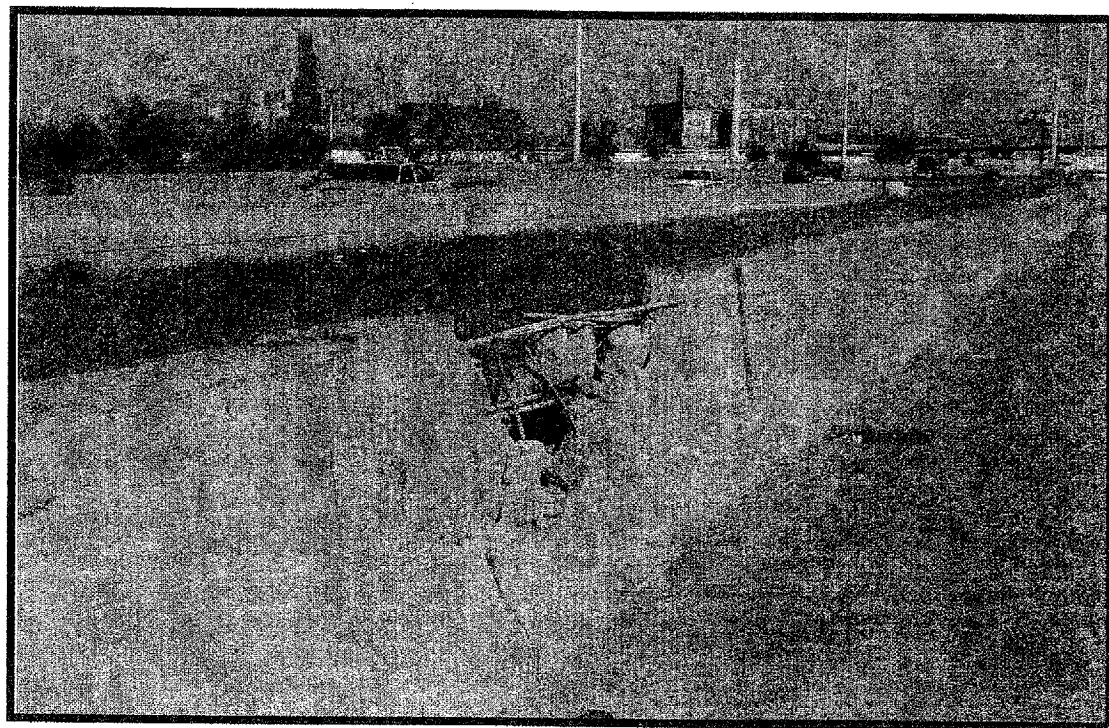
CONC BAR 1F225T1050 H-REINF.
CONCRETE BARRIER. SINGLE FACE.
225 TOP. 1050 HEIGHT. REINFORCED
(OR)
CONC BAR 1F225T1050 HV-REINF.
CONCRETE BARRIER. SINGLE FACE.
225 TOP. 1050 HEIGHT (VARIABLE). REINFORCED

FILL SECTION

FILL SECTION
REINFORCING BARS
6.1 m SECTION

BAR	NO.	SIZE	LENGTH	SHAPE
h	4	#20	5.95 m	—
s	21	#20	1.00 m	—
h1	4	#20	5.95 m	—
v	21	#20	1.63 m	—
REINFORCING BARS (EPOXY CTD.)			Kg	243

LONGITUDINAL BARS SHOULD NOT EXTEND THROUGH JOINTS.



OVERALL LENGTH=19'

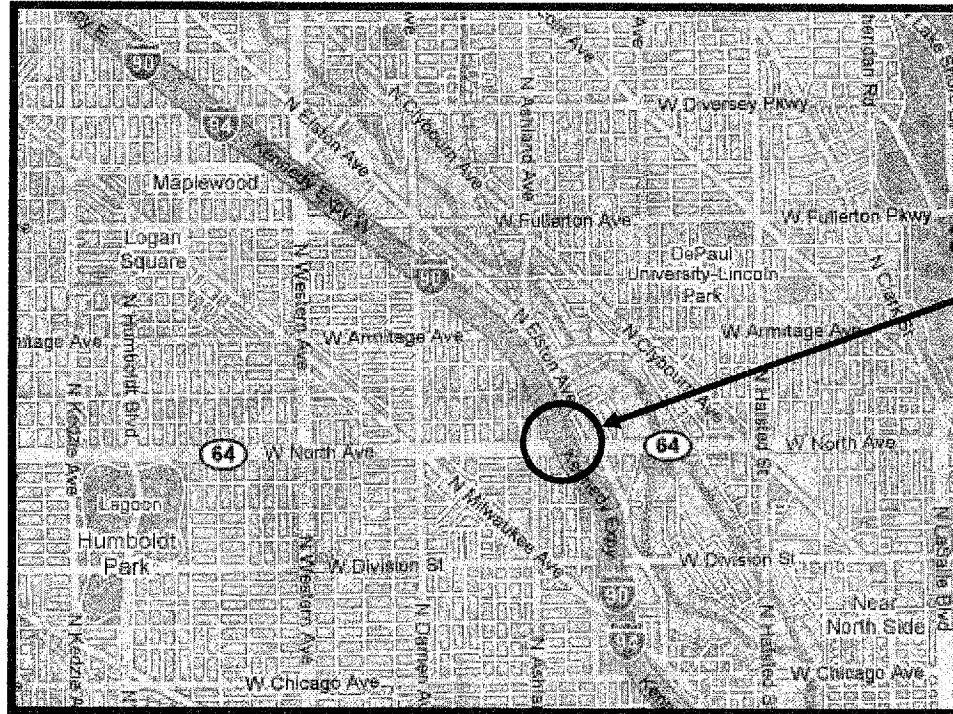
Above measurements in the existing detail are in Metric, and should be converted to English Units. The proposed reinforcement bars shall be included in the cost for Concrete Barrier Wall Removal and Replacement.

ROUTE	SECTION	COUNTY	TOTAL SHEETS	SHEET NUMBER
VARIOUS	2007-010 I	VARIOUS	19	14

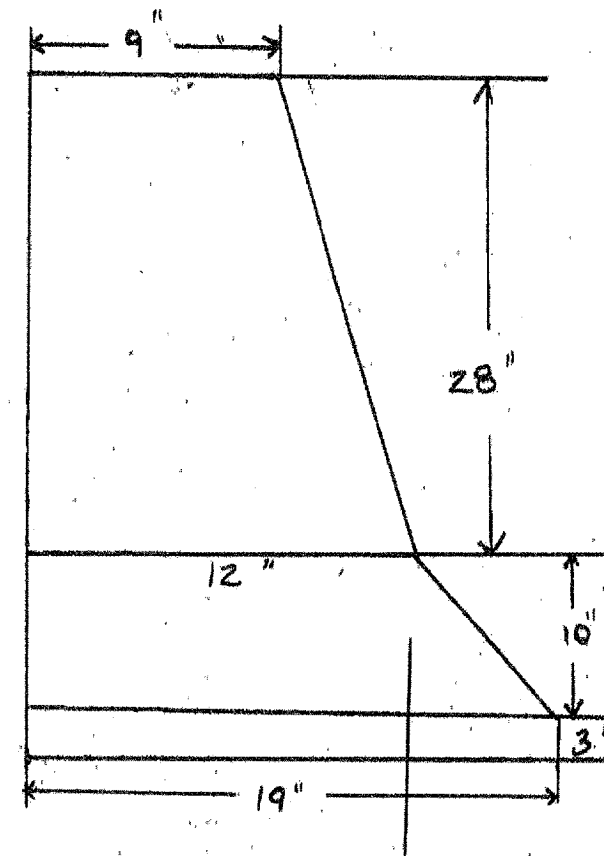
WEST TOWNSHIP

R 14 E

T 40 N



LOCATION 8: I-90,94: KENNEDY EXPRESSWAY
SOUTH EAST BOUND @ NORTH AVENUE
ENTRANCE RAMP. RIGHT SIDE OF
MAINLINE.



R & R 3' SECTION JUST PAST LIGHT POLE
SHOULD DOWEL INTO CONCRETE
SHOULDER.

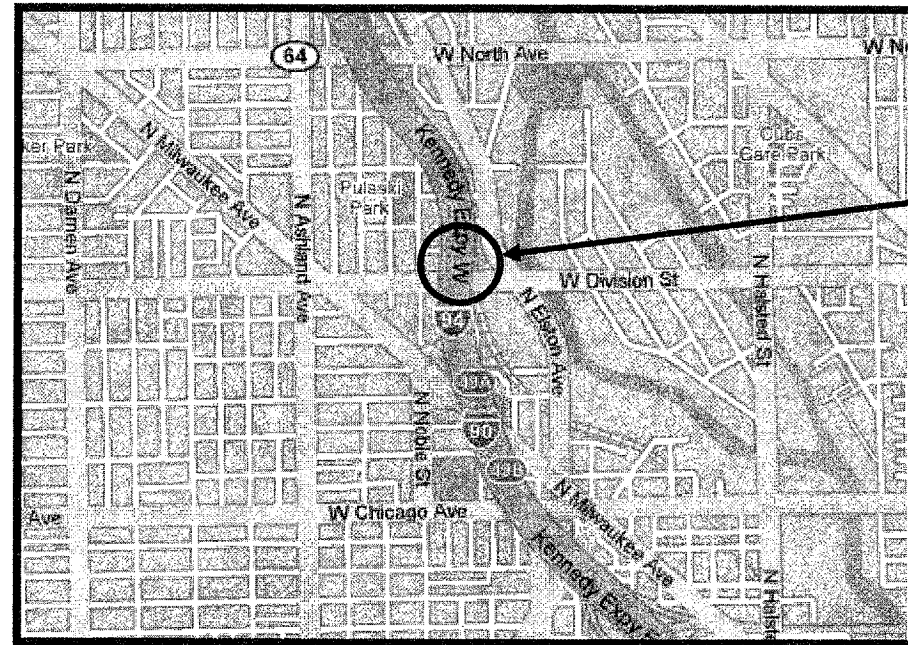
OVERALL LENGTH = 3'

ROUTE	SECTION	COUNTY	TOTAL SHEETS	SHEET NUMBER
VARIOUS	2007-010 I	VARIOUS	19	15

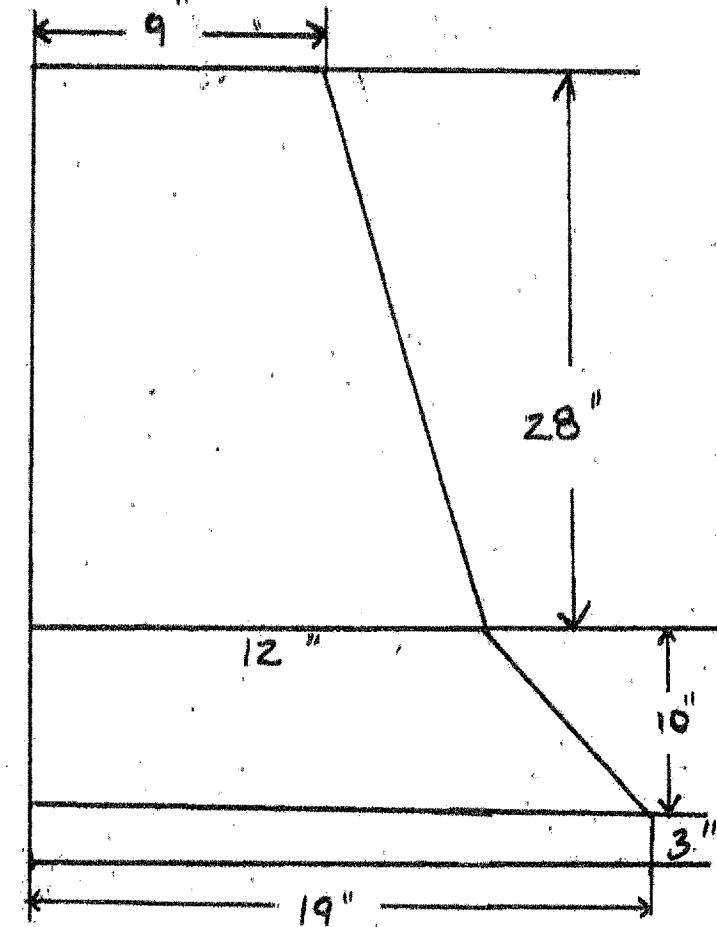
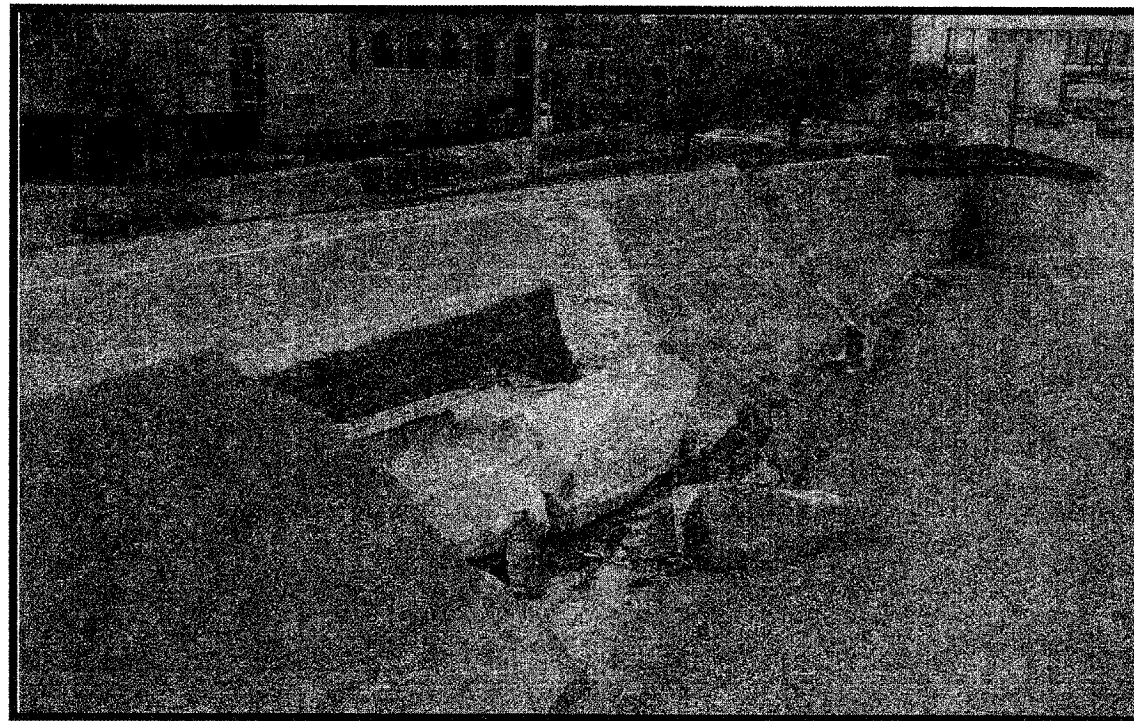
WEST TOWNSHIP

R 14 E

T 39 N



LOCATION 9: I-90/94: KENNEDY EXPRESSWAY
SOUTH EAST BOUND AT DIVISION EXIT, JUST
AFTER CRASH BARRELS RIGHT SIDE.



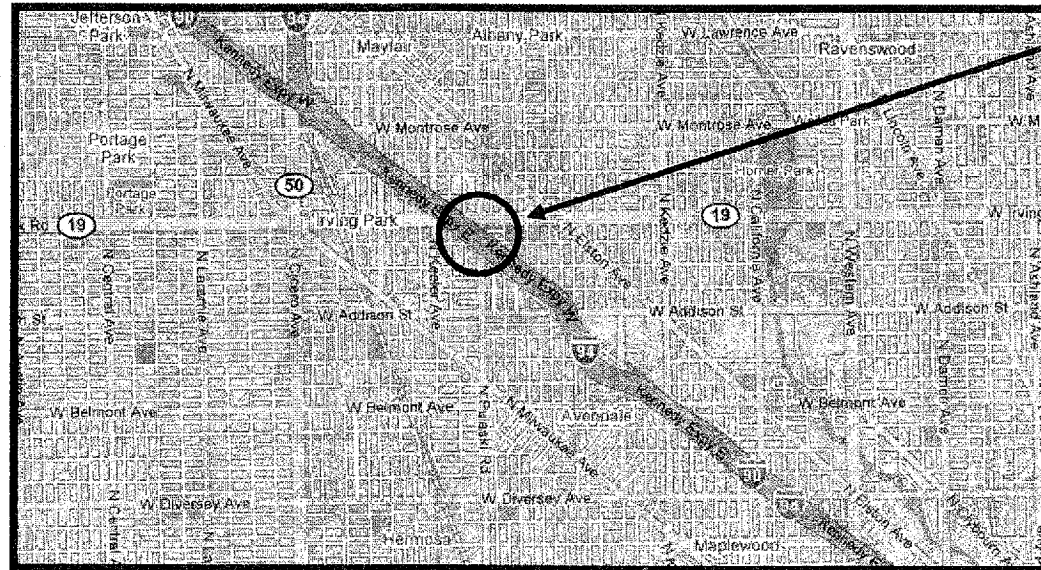
OVERALL LENGTH = 28'

ROUTE	SECTION	COUNTY	TOTAL SHEETS	SHEET NUMBER
VARIOUS	2007-010 1	VARIOUS	19	16

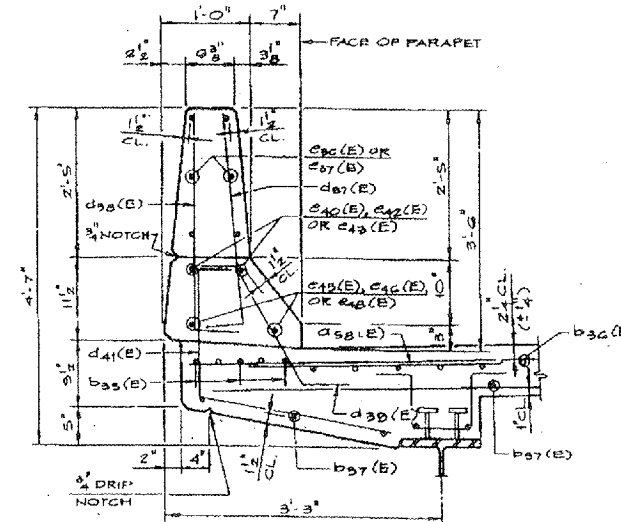
JEFFERSON TOWNSHIP

R 13 E

T 40 N



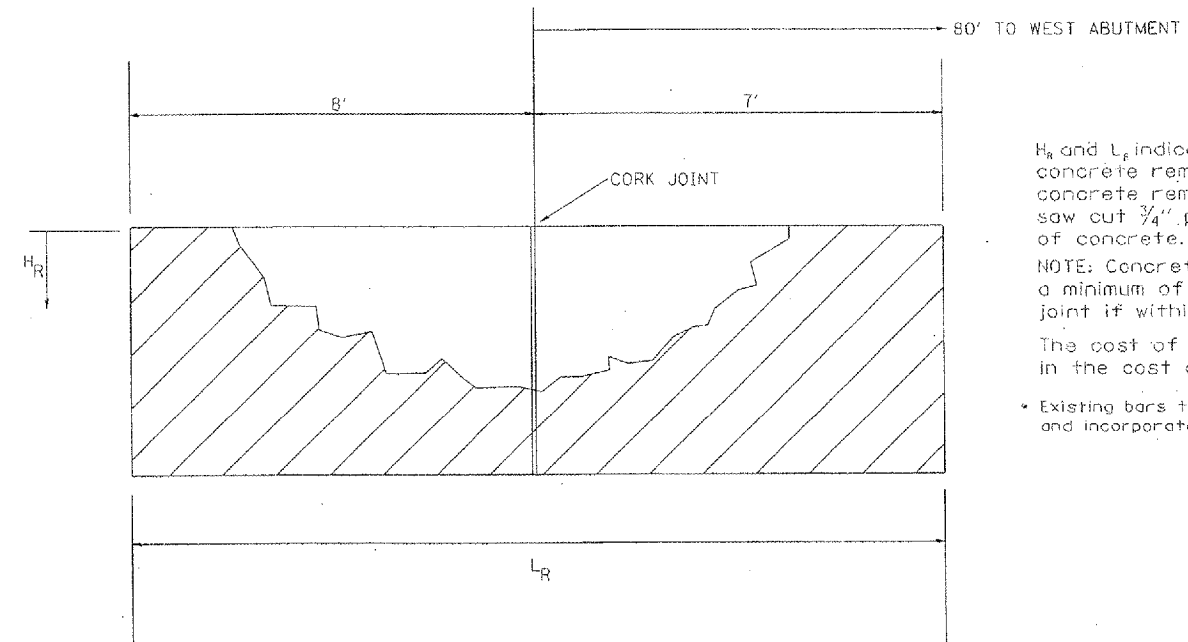
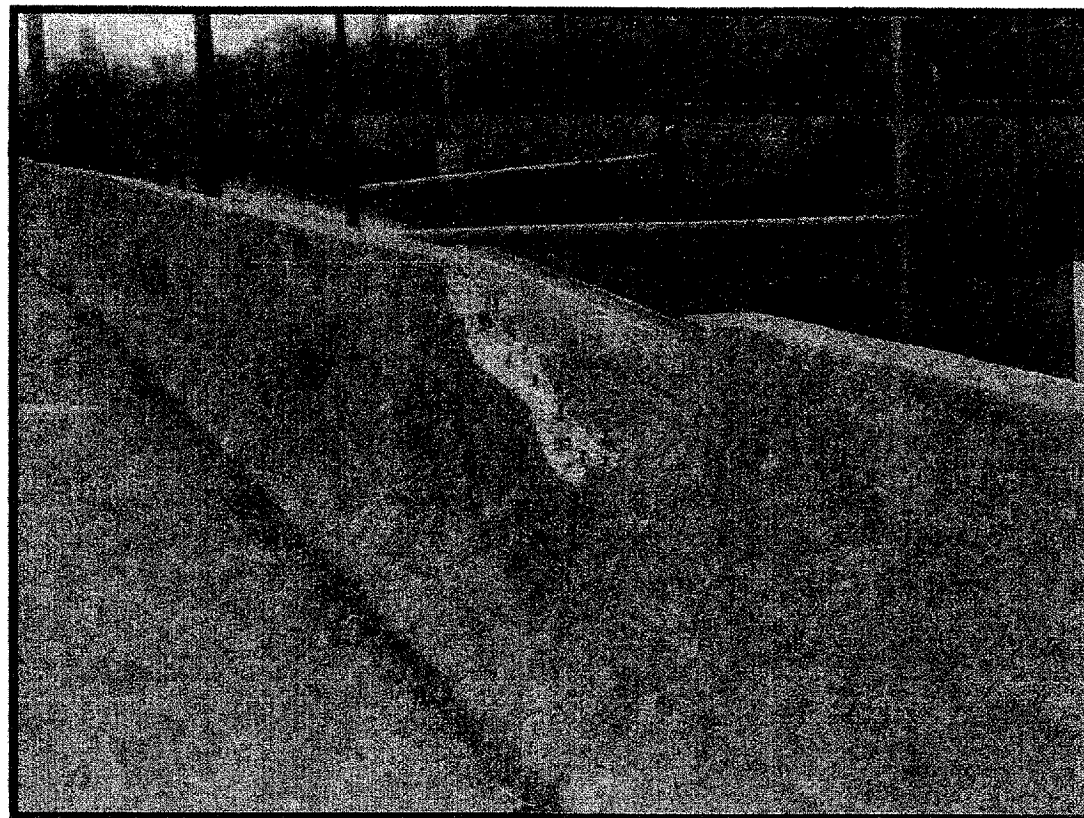
LOCATION 10: I-90,94: KENNEDY SOUTH EAST BOUND OVER PULASKI ROAD.



SECTION THRU S. PARAPET
LOOKING WEST

**SUPERSTRUCTURE
BILL OF MATERIAL**

d38(E)	214	#6	3'-11"	L
d39(E)	190	#4	3'-11"	L
d37(B)		#5	3'-8"	L
d38(E)		#4	3'-8"	L
d39(B)	214	#5	2'-7"	L
d40(E)	190	#4	3'-11"	L
d41(E)		#4	4'-2"	L
e35(E)	60	#2	15'-3"	
e36(E)	24	#4	9'-8"	
e37(E)	60	#4	14'-11"	



H_R and L_R indicate dimensions for concrete removal. Perimeters of concrete removal areas shall be saw cut 3/4" prior to removal of concrete.

NOTE: Concrete removal shall extend a minimum of 5" past damage or to joint if within 2'-0".

The cost of saw cuts shall be included in the cost of "Concrete Removal"

- Existing bars to be cleaned, straightened, and incorporated in new construction

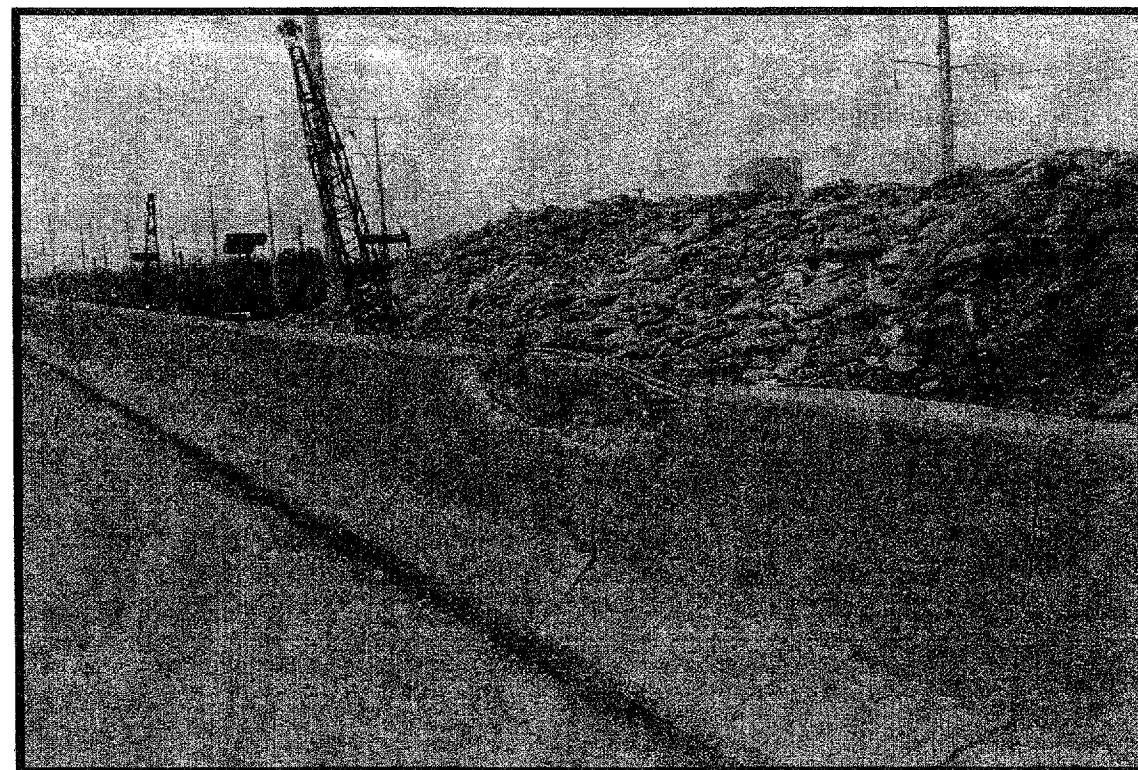
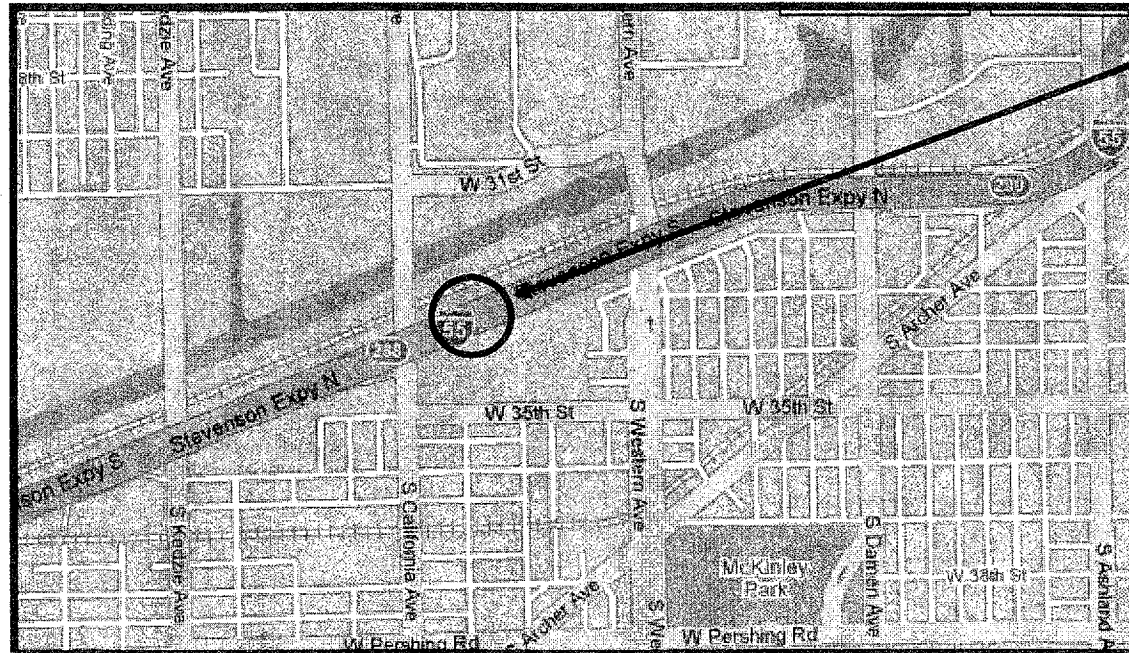
The proposed reinforcement bars shall be included in the cost for Concrete Barrier Wall Removal and Replacement.

ROUTE VARIOUS	SECTION 2007-010 I	COUNTY VARIOUS	TOTAL SHEETS 19	SHEET NUMBER 17
------------------	-----------------------	-------------------	-----------------------	-----------------------

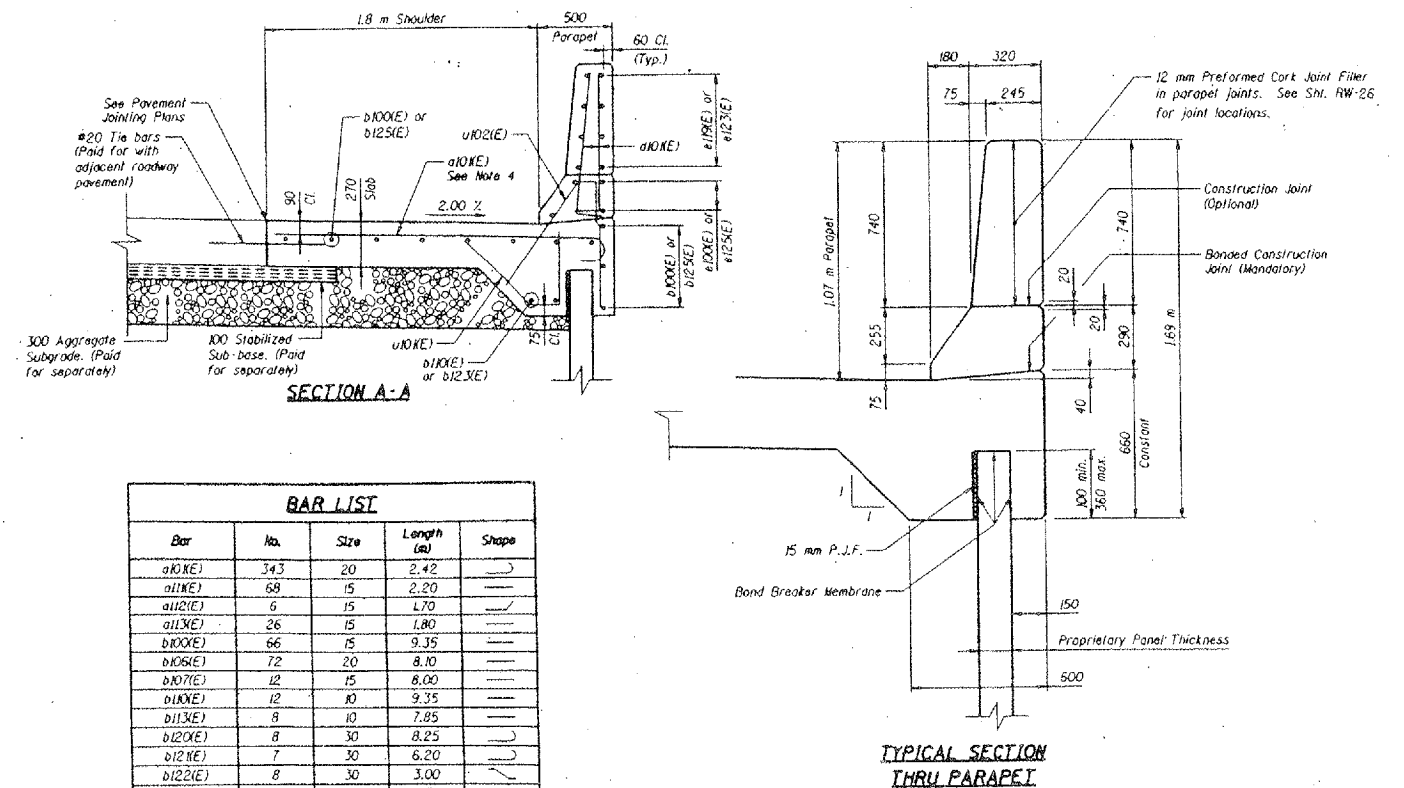
SOUTH TOWNSHIP

R 13 E

T 39 N



LOCATION 11: I-55: STEVENSON EXPRESSWAY SOUTH WEST BOUND RIGHT SIDE WEST OF WESTERN AVENUE BRIDGE, +/- 600' 0.3M EAST OF CALIFORNIA AVENUE ON TOP OF RETAINING WALL.



BAR LIST				
Bar	No.	Size	Length (m)	Shape
Ø10(XE)	343	20	2.42	U
Ø11(XE)	68	15	2.20	U
Ø12(XE)	6	15	1.70	U
Ø13(XE)	26	15	1.80	U
Ø10(XE)	66	15	9.35	U
Ø10(XE)	72	20	8.10	U
Ø10(XE)	12	15	8.00	U
Ø10(XE)	12	10	9.35	U
Ø11(XE)	8	10	7.85	U
Ø12(XE)	8	30	8.25	U
Ø12(XE)	7	30	6.20	U
Ø12(XE)	8	30	3.00	U
Ø12(XE)	4	10	9.50	U
Ø12(XE)	22	15	9.50	U
Ø10(XE)	41	10	0.75	U
Ø10(XE)	725	15	1.15	U
Ø10(XE)	24	15	9.35	U
Ø11(XE)	16	15	8.00	U
Ø11(XE)	32	15	5.20	U
Ø11(XE)	16	15	5.00	U
Ø12(XE)	56	15	8.85	U
Ø12(XE)	8	15	9.50	U
Ø12(XE)	16	15	5.55	U
Ø12(XE)	10	10	7.00	U
Ø13(XE)	5	10	2.00	U
Ø13(XE)	5	10	1.50	U
Ø13(XE)	4	10	1.20	U
Ø10(XE)	378	15	1.35	U
Ø10(XE)	378	15	1.87	U
Ø10(XE)	7	10	0.99	U
Ø10(XE)	34	10	1.29	U

OVERALL LENGTH = 14'

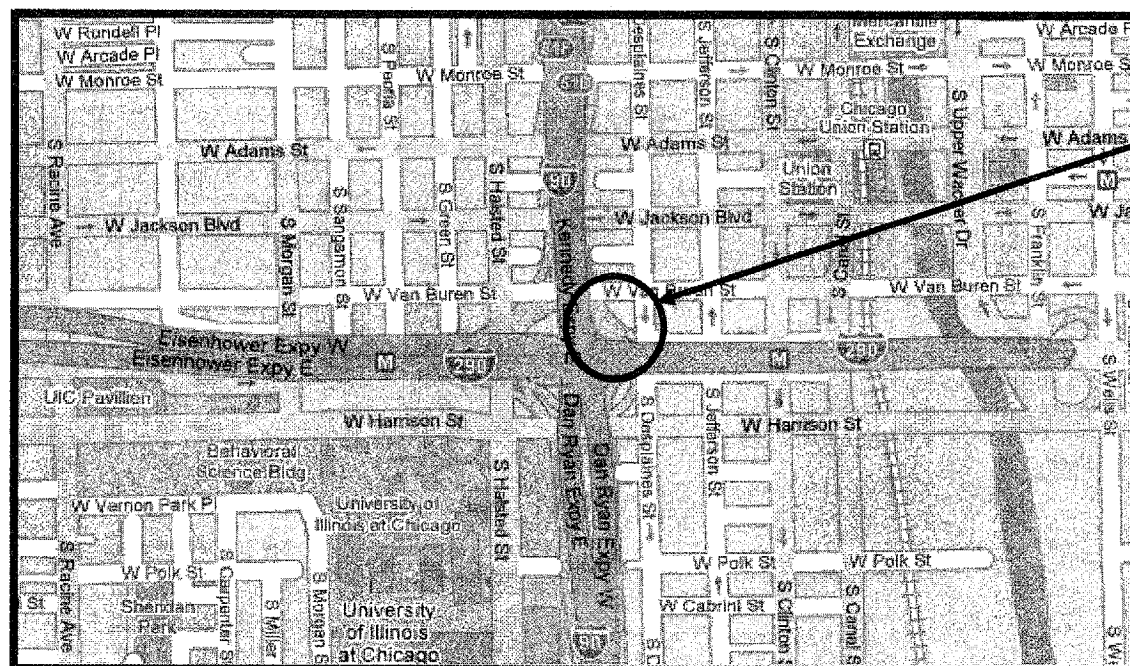
Above measurements in the existing detail are in Metric and should be converted to English Units. The proposed reinforcement bars shall be included in the cost for Concrete Barrier Wall Removal and Replacement.

ROUTE	SECTION	COUNTY	TOTAL SHEETS	SHEET NUMBER
VARIOUS	2007-0101	VARIOUS	19	18

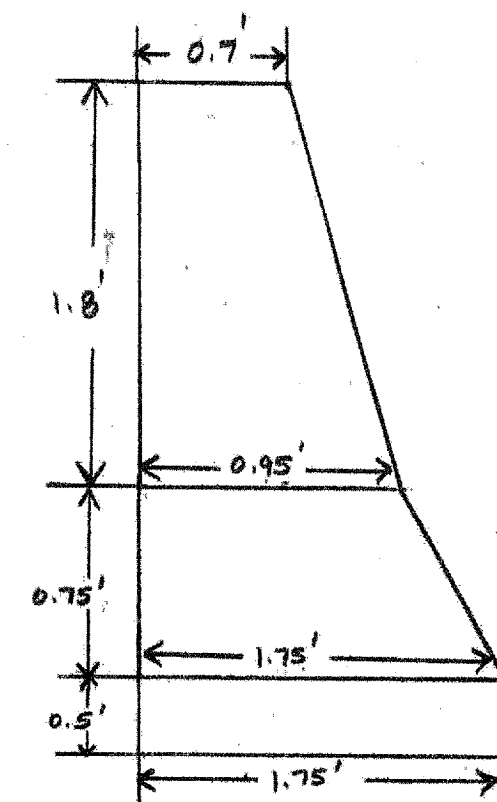
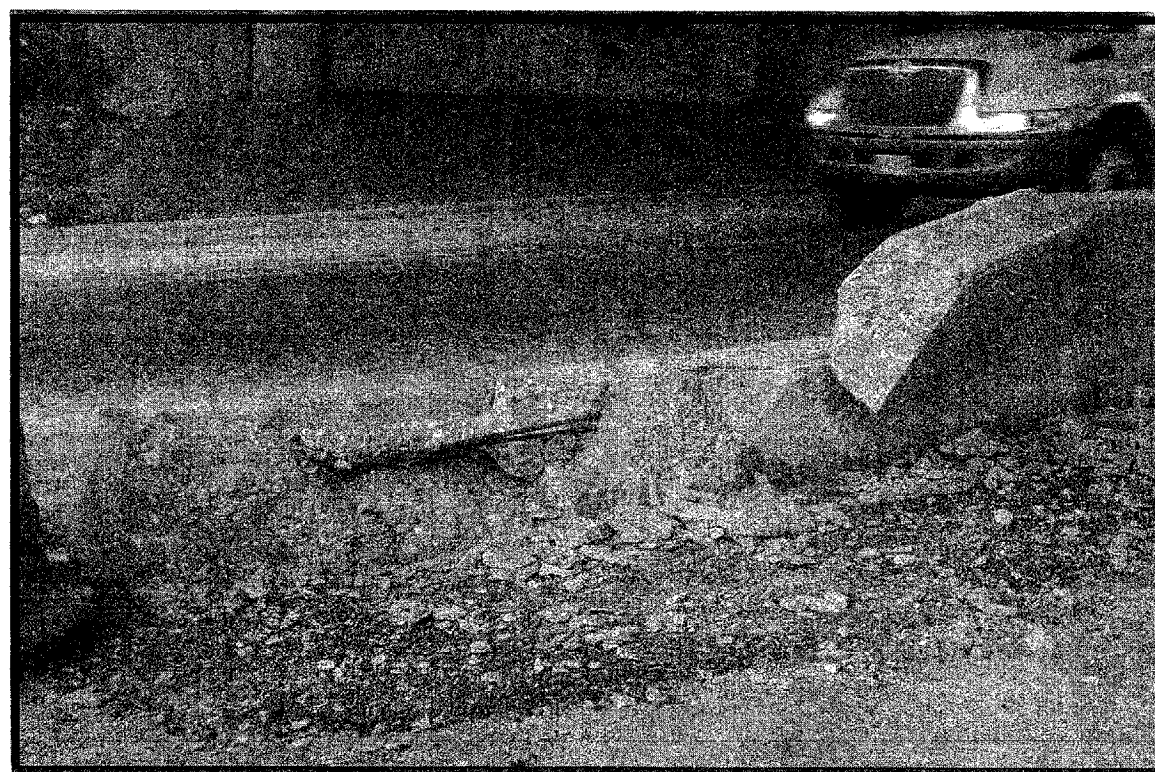
SOUTH TOWNSHIP

R 12E

T 39 N

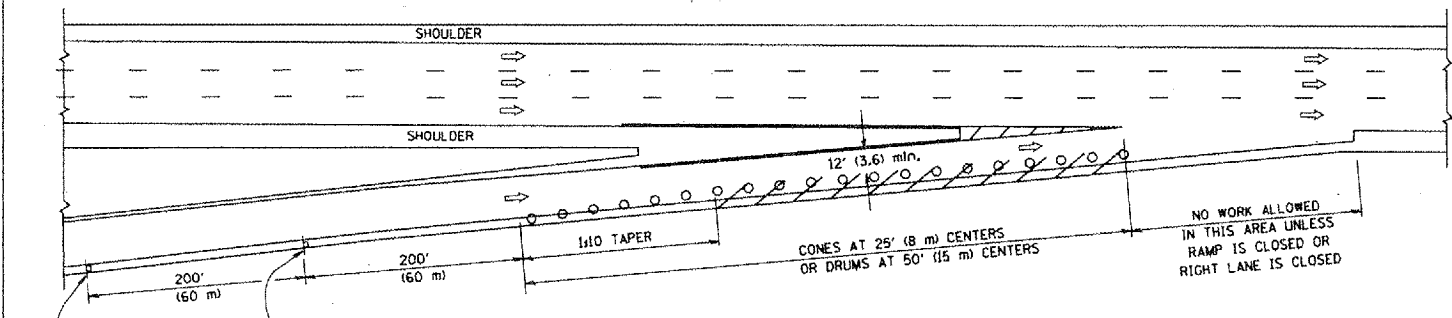


LOCATION 12: I-290: WESTBOUND I-290 TO NORTH BOUND KENNEDY ENTRANCE RAMP, LEFT SIDE.

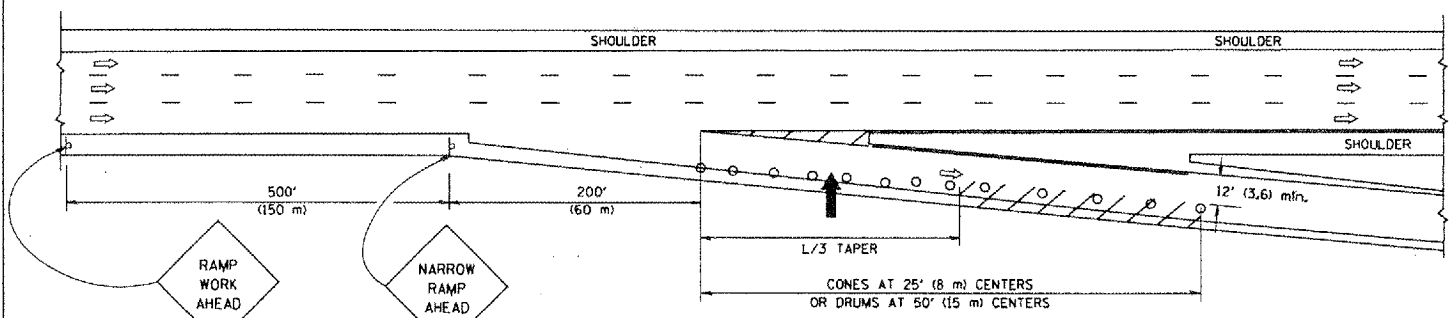


OVERALL LENGTH = 12'

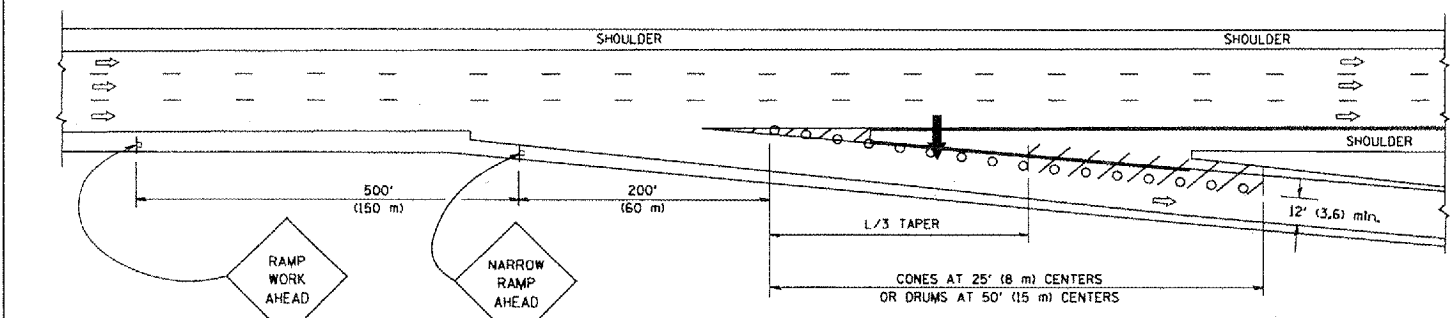
PARTIAL RAMP CLOSURE DETAILS



TYPICAL ENTRANCE RAMP



TYPICAL EXIT RAMP



TYPICAL EXIT RAMP

SYMBOLS

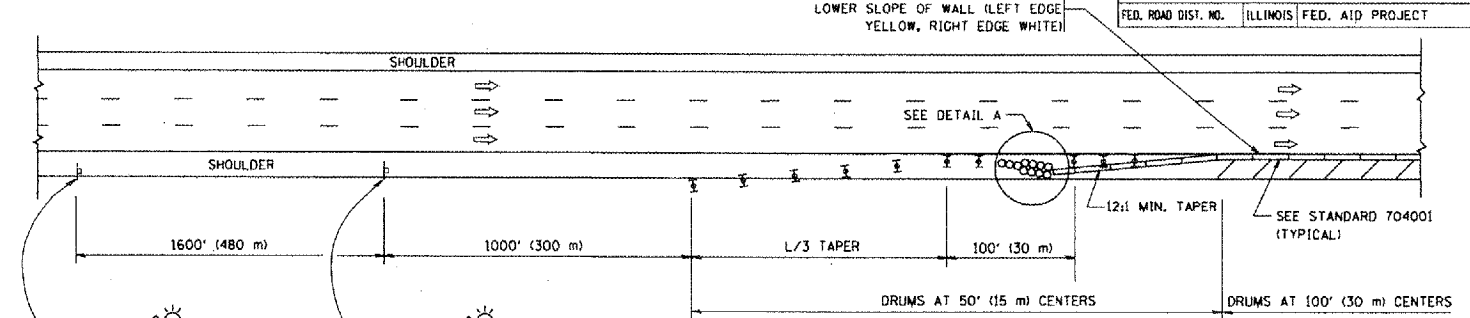
- ARROWBOARD
- WORK AREA
- SIGN ON PORTABLE OR PERMANENT SUPPORT
- FLAGGER WITH CONTROL SIGN
- TYPE II BARRICADE, DRUM OR VERTICAL BARRICADE WITH STEADY BURN MONO-DIRECTIONAL LIGHT
- CONE, DRUM OR BARRICADE

GENERAL NOTES

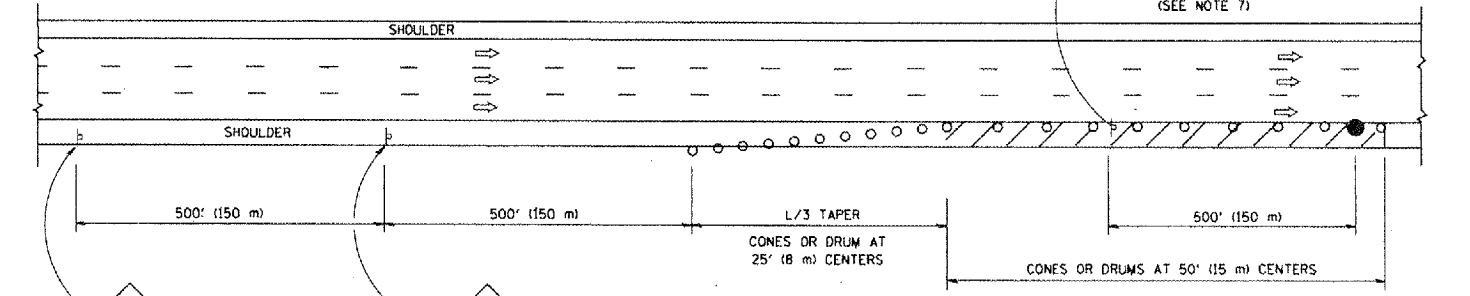
1. THE "L" DISTANCE EQUALS:

SPEED LIMIT	FORMULAS
45 mph (80 km/h) OR GREATER	METRIC: $L=0.65(W)(S)$ ENGLISH: $L=(W)(S)$
W = WIDTH OF OFFSET IN FEET (METERS)	S = NORMAL POSTED SPEED MPH (KM/H)
2. PLASTIC DRUMS WITH HIGH PERFORMANCE REFLECTIVE SHEETING AND STEADY BURNING LIGHTS ARE REQUIRED FOR ALL NIGHTTIME CLOSURES.
3. ALL SIGNS SHALL BE POST MOUNTED IF THE CLOSURE TIME EXCEEDS FOUR DAYS.
4. FLASHING LIGHTS SHALL BE USED DURING THE HOURS OF DARKNESS AND SHALL BE INSTALLED ABOVE THE FIRST TWO SETS OF SIGNS.
5. THE IMPACT ATTENUATOR, TEMPORARY IS NOT REQUIRED WHEN THE TEMPORARY CONCRETE BARRIER WALL IS PROTECTED BY OR IS TIED INTO THE EXISTING GUARDRAIL. IF OFFSET IS LESS THAN 5 FEET USE "TRAFFIC BARRIER TERMINAL, TYPE III, TEMPORARY" DEVICE TO MEET NCHRP350 FOR POSTED SPEED.
6. AUTHORIZATION FROM THE DISTRICT'S BUREAU OF TRAFFIC IS REQUIRED FOR ALL FREEWAY CLOSURES.
7. THE FLAGGER AND FLAGGER SIGN ARE REQUIRED AT THE ABOVE WORK SITES WHEN:
 - a. FOUR OR MORE WORK VEHICLES ENTER THE TRAFFIC LANES IN A ONE HOUR PERIOD.
 - b. THE WORK ACTIVITY REQUIRES FREQUENT ENCROACHMENT INTO THE LANE OPEN TO TRAFFIC.
 THE FLAGGER SHALL BE STATIONED APPROXIMATELY 100' (30 m) TO 200' (60 m) IN ADVANCE OF THE WORKERS.

SHOULDER CLOSURE DETAILS

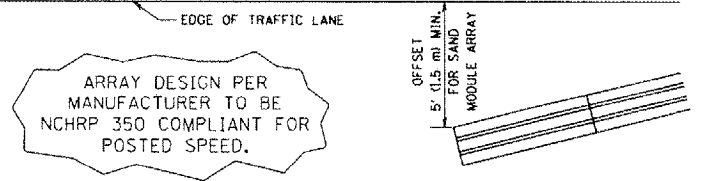


PERMANENT SHOULDER CLOSURE



DAYTIME SHOULDER CLOSURE

THIS DETAIL IS USED WHERE:
 1. VEHICLES, EQUIPMENT, WORKERS OR THEIR ACTIVITIES ENCROACH IN AN AREA CLOSER THAN 15' (4.5 m) TO THE EDGE OF PAVEMENT FOR A PERIOD IN EXCESS OF 15 MINUTES.



DETAIL "A"
 IMPACT ATTENUATOR, TEMPORARY
 (SEE NOTE 5)

ALL DIMENSIONS ARE IN INCHES (MILLIMETERS) UNLESS OTHERWISE SHOWN.

REVISIONS	
NAME	DATE
DWS	11/96
JAF	12/02
NCHRP 350	04/03
JAF	2/06
SPB	1/07

ILLINOIS DEPARTMENT OF TRANSPORTATION
 TRAFFIC CONTROL DETAILS
 FOR FREEWAY
 SHOULDER CLOSURES
 PARTIAL RAMP CLOSURES
 DESIGNED BY: DWS
 DRAWN BY:
 CHECKED BY:
 TC-17

PLOT DATE: 2/7/2007
 FILE NAME: K:\data\1101\11017.dwg
 PLOT SCALE: 1/8"=1'-0"
 USER NAME: bbarrett