

F.A.I. RTE.	SECTION	COUNTY	TOTAL SHEETS	SHEET NO.
VAR	2007-040I	COOK / WILL	19	1
FED. ROAD DIST. NO.		ILLINOIS	CONTRACT NO. 60D28	

STATE OF ILLINOIS
DEPARTMENT OF TRANSPORTATION
DIVISION OF HIGHWAYS

PROPOSED
HIGHWAY PLANS

VARIOUS ROUTES
VARIOUS LOCATIONS
SECTION: 2007-040 I
PERMANENT PROTECTIVE SHIELDING
COOK & WILL COUNTIES
C-91-372-07

- LOC 1 SN 016-0823
- LOC 2 SN 016-2070, -2071
- LOC 3 SN 016-0587
- LOC 4 SN 016-0927
- LOC 5 SN 016-0575
- LOC 6 SN 099-0192
- LOC 7 SN 099-0159
- LOC 8 SN 099-0177

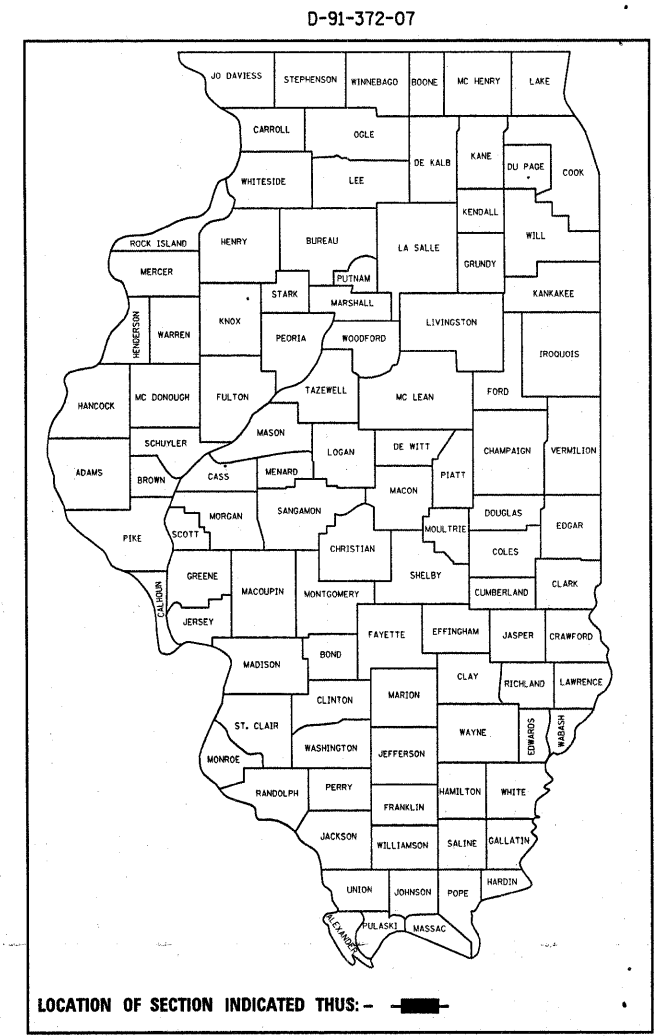
FOR LOCATION MAPS SEE SHEETS 2 - 4

FOR INDEX OF SHEETS, SEE SHEET NO. 5

IMPROVEMENTS ARE LOCATED IN THE CITY OF CHICAGO, AND IN THE VILLAGES OF BURR RIDGE, MONEE, RICHTON PARK, SKOKIE, & TINLEY PARK

J.U.L.I.E.
JOINT UTILITY LOCATION INFORMATION FOR EXCAVATION
1-800-892-0123 OR 811
C.U.A.N.
CHICAGO UTILITY ALERT NETWORK
1-312-744-7000

PROJECT ENGINEER ROBERT BORO (847) 705-4178
PROJECT MANAGER KEN ENG
CONTRACT NO. 60D28



STATE OF ILLINOIS
DEPARTMENT OF TRANSPORTATION
DIVISION OF HIGHWAYS

SUBMITTED Dec 24 20 07
Due Okh
DEPUTY DIRECTOR OF HIGHWAYS, REGION ENGINEER

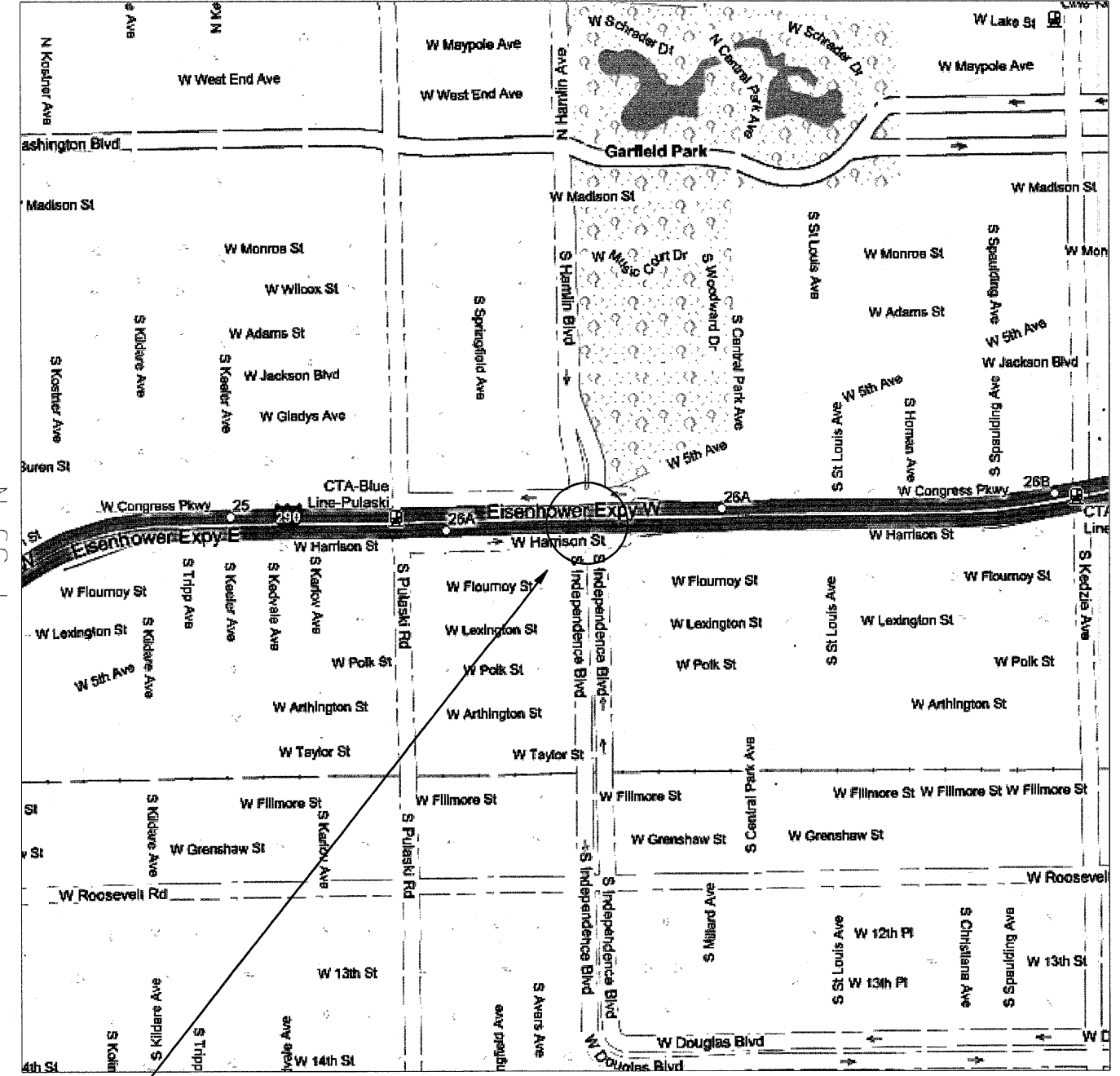
February 1, 20 08
Eric E. Harau
ENGINEER OF DESIGN AND ENVIRONMENT

February 1, 20 08
Christine M. Reed
DIRECTOR OF HIGHWAYS, CHIEF ENGINEER

PRINTED BY THE AUTHORITY
OF THE STATE OF ILLINOIS

LOCATION 1
R 13 E

LOCATION 2
R 13 E



NILES TOWNSHIP

WEST CHICAGO TOWNSHIP

OLD ORCHARD RD OVER I-94 (SN 016-0823)
VILLAGE OF SKOKIE, COOK COUNTY

INDEPENDENCE BLVD OVER I-290 (SN 016-2070, -2071)
CITY OF CHICAGO, COOK COUNTY

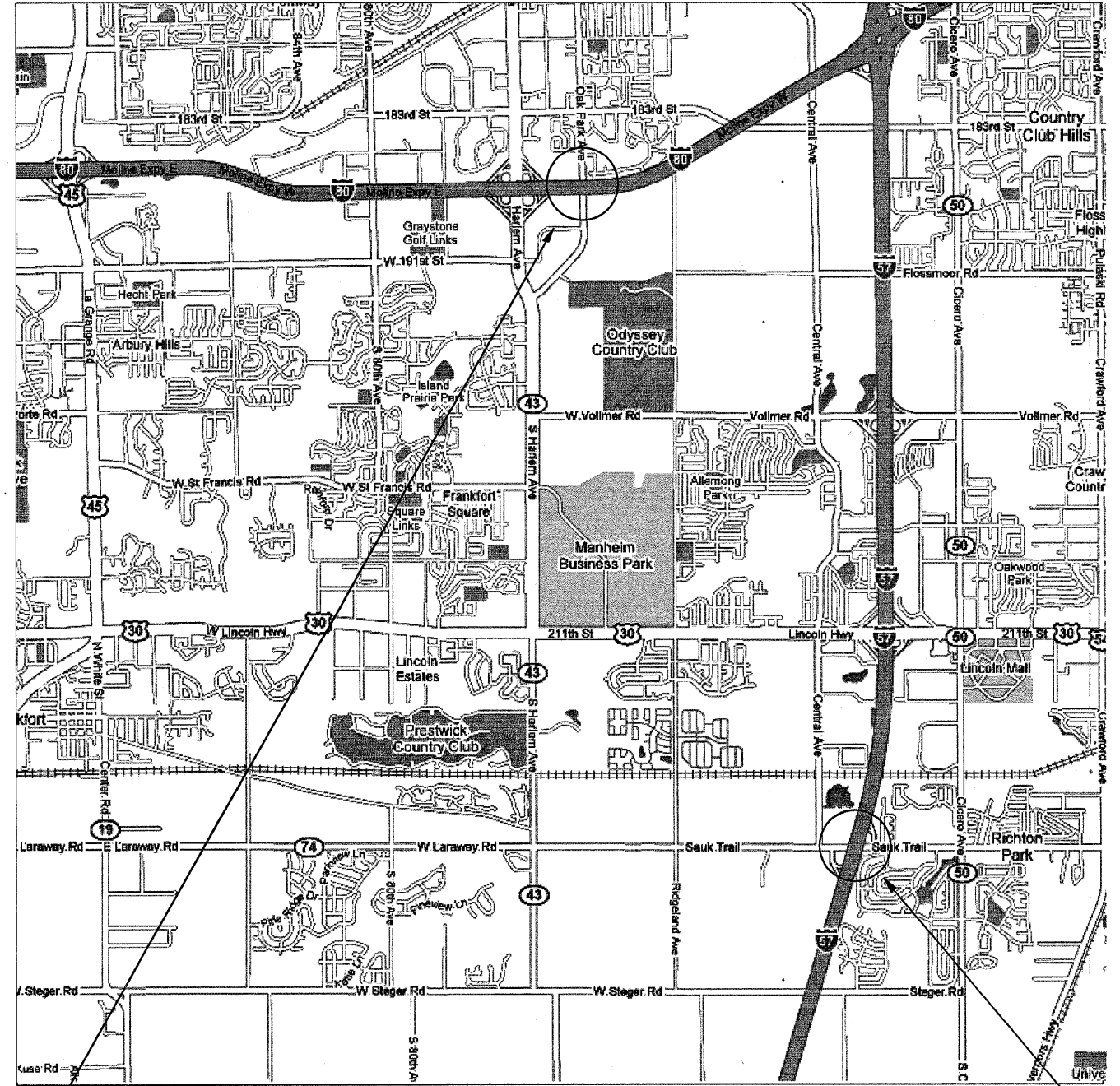
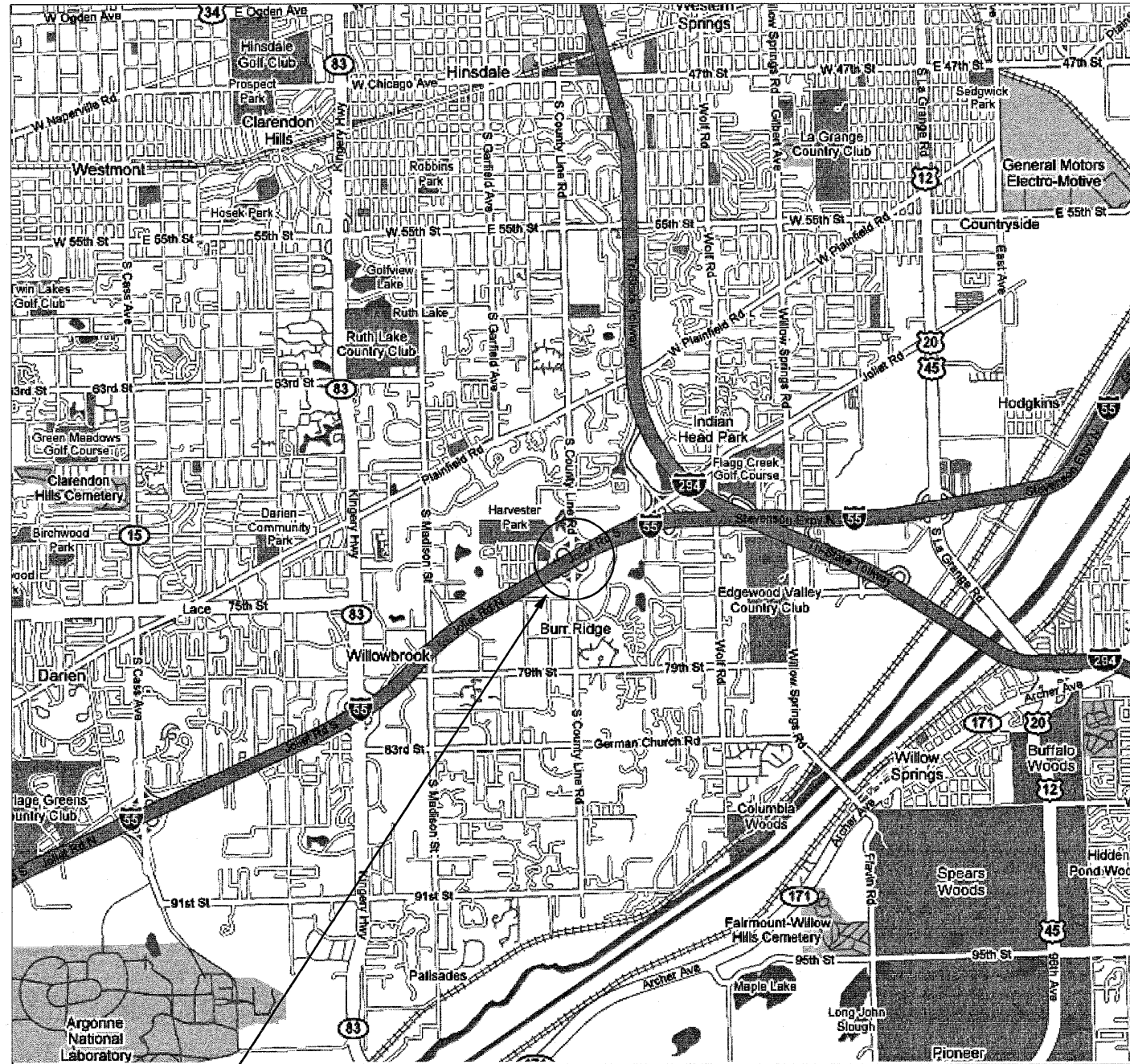
TRAFFIC DATA: (I-94)
SPEED LIMIT = 55 MPH
2006 ADT = 170,900

TRAFFIC DATA: (I-290)
SPEED LIMIT = 55 MPH
2006 ADT = 221,300

FILE NAME = c:\projects\dl37207\design\map.dgn	USER NAME = hamdanah	DESIGNED -	REVISED -	STATE OF ILLINOIS DEPARTMENT OF TRANSPORTATION	LOCATION 1 & LOCATION 2 LOCATION MAPS			F.A.I. RTE.	SECTION	COUNTY	TOTAL SHEETS	SHEET NO.	
	PLOT SCALE = 58,0000 "/> <td>DRAWN -</td> <td>REVISED -</td> <td>SCALE:</td> <td>SHEET NO.</td> <td>OF</td> <td>SHEETS</td> <td>STA.</td> <td>TO STA.</td> <td>COOK / WILL</td> <td>19</td> <td>2</td>	DRAWN -	REVISED -		SCALE:	SHEET NO.	OF	SHEETS	STA.	TO STA.	COOK / WILL	19	2
	PLOT DATE = 12/21/2007	CHECKED -	REVISED -								CONTRACT NO.	60D28	
		DATE -	REVISED -								FED. ROAD DIST. NO. 1 ILLINOIS FED. AID PROJECT		

LOCATION 3
R 12 E

LOCATION 4 & 5
R 12 E



LYONS TOWNSHIP

COUNTY LINE RD OVER I-55 (SN 016-0587)
VILLAGE OF BURR RIDGE, COOK COUNTY

TRAFFIC DATA: (I-55)
SPEED LIMIT = 55MPH
2006 ADT = 169, 800

RICH TOWNSHIP

OAK PARK AVE OVER I-80
(SN 016-0927)
VILLAGE OF TINLEY PARK
COOK COUNTY

TRAFFIC DATA: (I-80)
SPEED LIMIT = 65 MPH
2006 ADT = 100,000

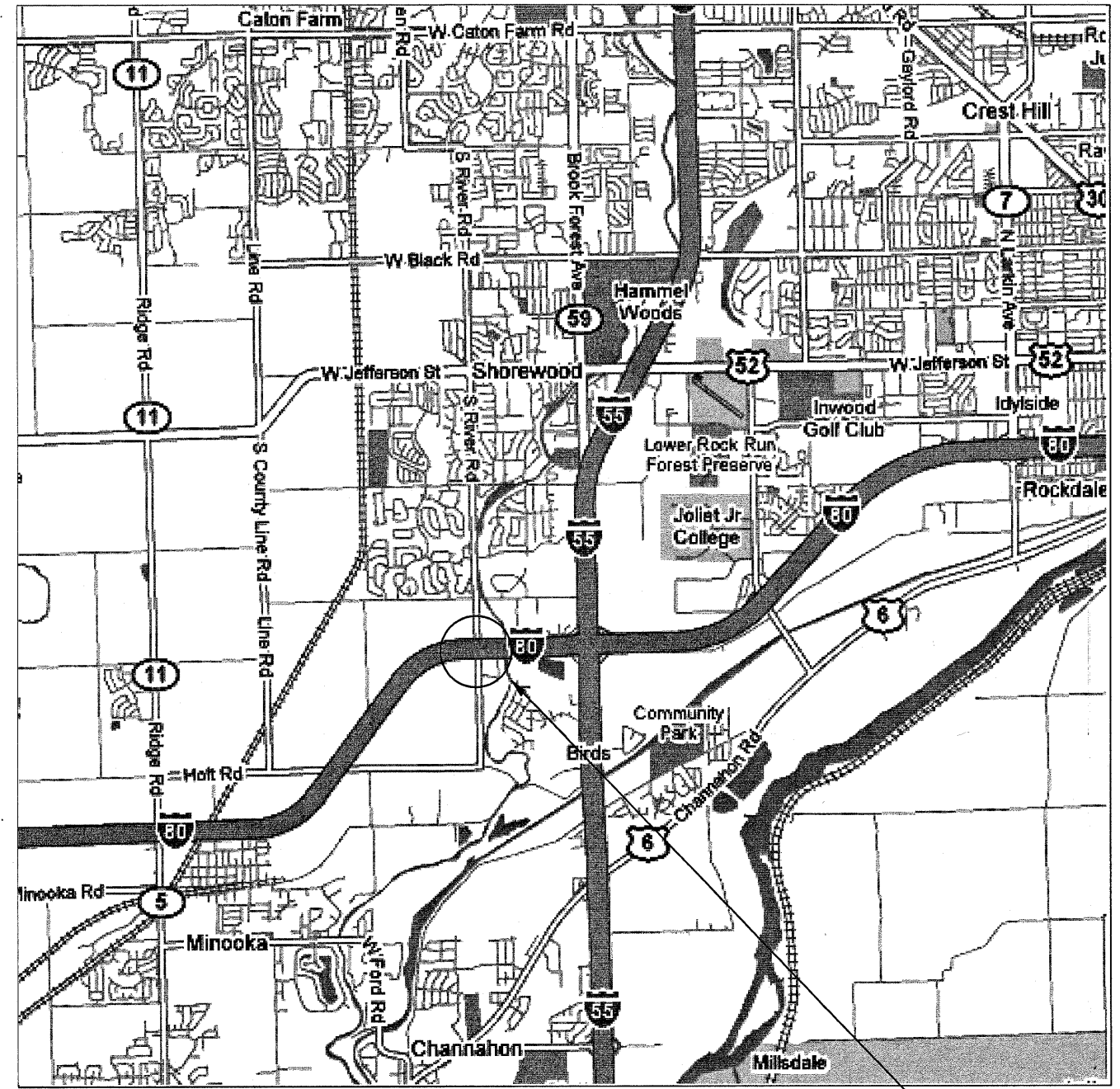
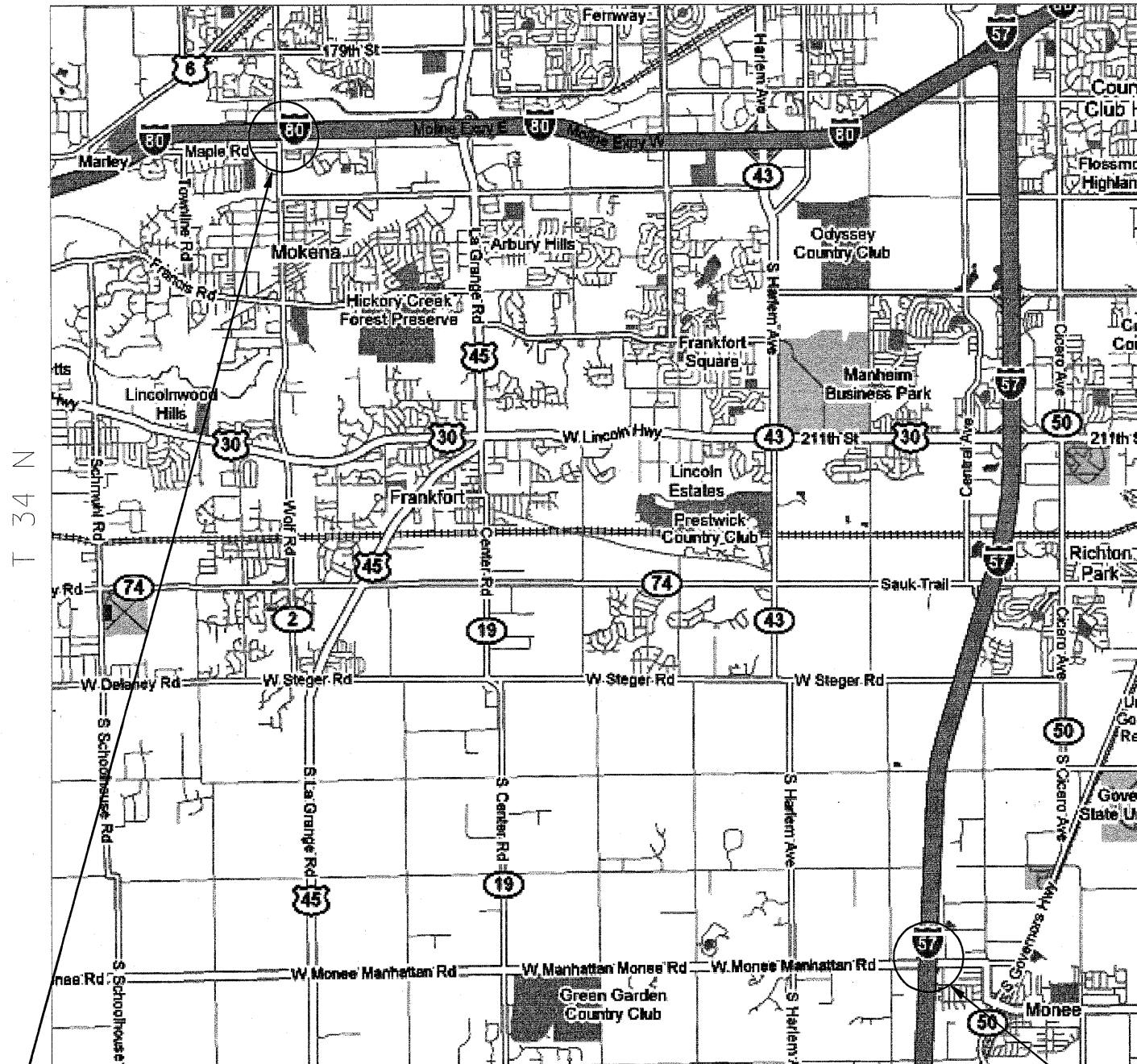
SAUK TRAIL OVER I-57
(SN 016-0575)
VILLAGE OF RICHTON PARK
COOK COUNTY

TRAFFIC DATA: (I-57)
SPEED LIMIT = 65 MPH
2006 ADT = 48,700

FILE NAME = c:\projects\137207\designao.dgn	USER NAME = hamdanah	DESIGNED -	REVISED -	STATE OF ILLINOIS DEPARTMENT OF TRANSPORTATION	LOCATION 3, LOCATION 4 & LOCATION 5 LOCATION MAPS				F.A.I. RTE.	SECTION	COUNTY	TOTAL SHEETS	SHEET NO.
	PLOT SCALE = 50,0000' / IN.	DRAWN -	REVISED -		SCALE:	SHEET NO.	OF	SHEETS	STA.	TO STA.	COOK / WILL	19	3
	PLOT DATE = 12/21/2007	CHECKED -	REVISED -								CONTRACT NO.	60D28	
		DATE -	REVISED -								FED. ROAD DIST. NO. 1 ILLINOIS FED. AID PROJECT		

LOCATION 6 & 7
R 13 E

LOCATION 8
R 12 E



FRANKFORT & MONEE TOWNSHIP

TROY TOWNSHIP

WOLF RD OVER I-80
(SN 099-0192)
WILL COUNTY

MONEE-MANHATTAN RD OVER I-57
(SN 099-0159)
VILLAGE OF MONEE, WILL COUNTY

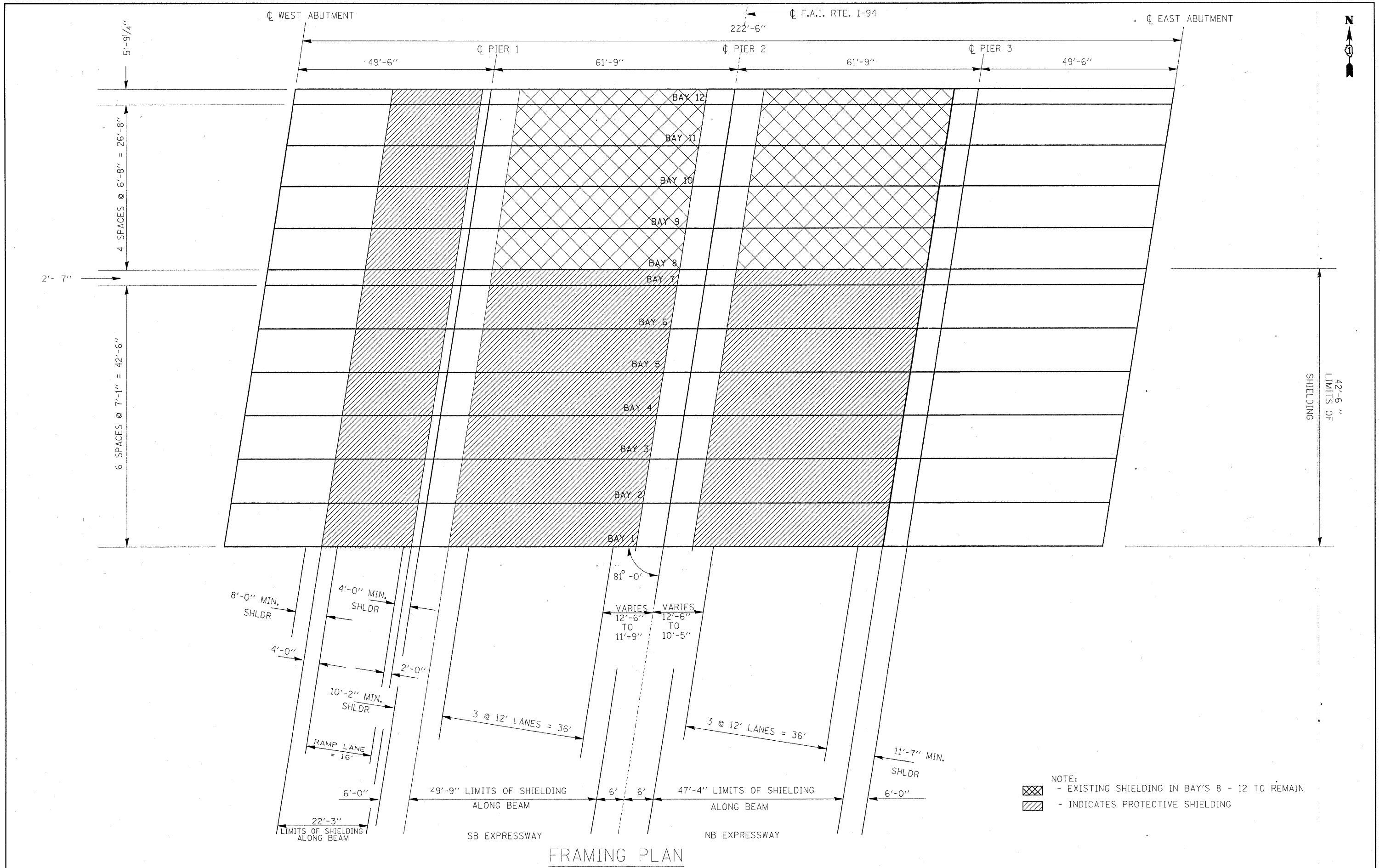
RIVER RD OVER I-80 (SN 099-0177)
WILL COUNTY

TRAFFIC DATA: (I-80)
SPEED LIMIT = 65 MPH
2006 ADT = 100,000

TRAFFIC DATA: (I-57)
SPEED LIMIT = 65 MPH
2006 ADT = 48,700

TRAFFIC DATA: (I-80)
SPEED LIMIT = 65 MPH
2006 ADT = 68,000

FILE NAME = e:\proj\joo\ts\dl37207\design\m.dgn	USER NAME = hamdanah	DESIGNED -	REVISED -	STATE OF ILLINOIS DEPARTMENT OF TRANSPORTATION	LOCATION 6, LOCATION 7 & LOCATION 8 LOCATION MAPS			F.A.I. RTE.	SECTION	COUNTY	TOTAL SHEETS	SHEET NO.	
	PLOT SCALE = 50.0000' / 1" IN.	DRAWN -	REVISED -		SCALE:	SHEET NO.	OF	SHEETS	STA.	TO STA.	COOK / WILL	19	4
	PLOT DATE = 12/21/2007	CHECKED -	REVISED -								CONTRACT NO.	60D28	
		DATE -	REVISED -								FED. ROAD DIST. NO. 1 ILLINOIS FED. AID PROJECT		

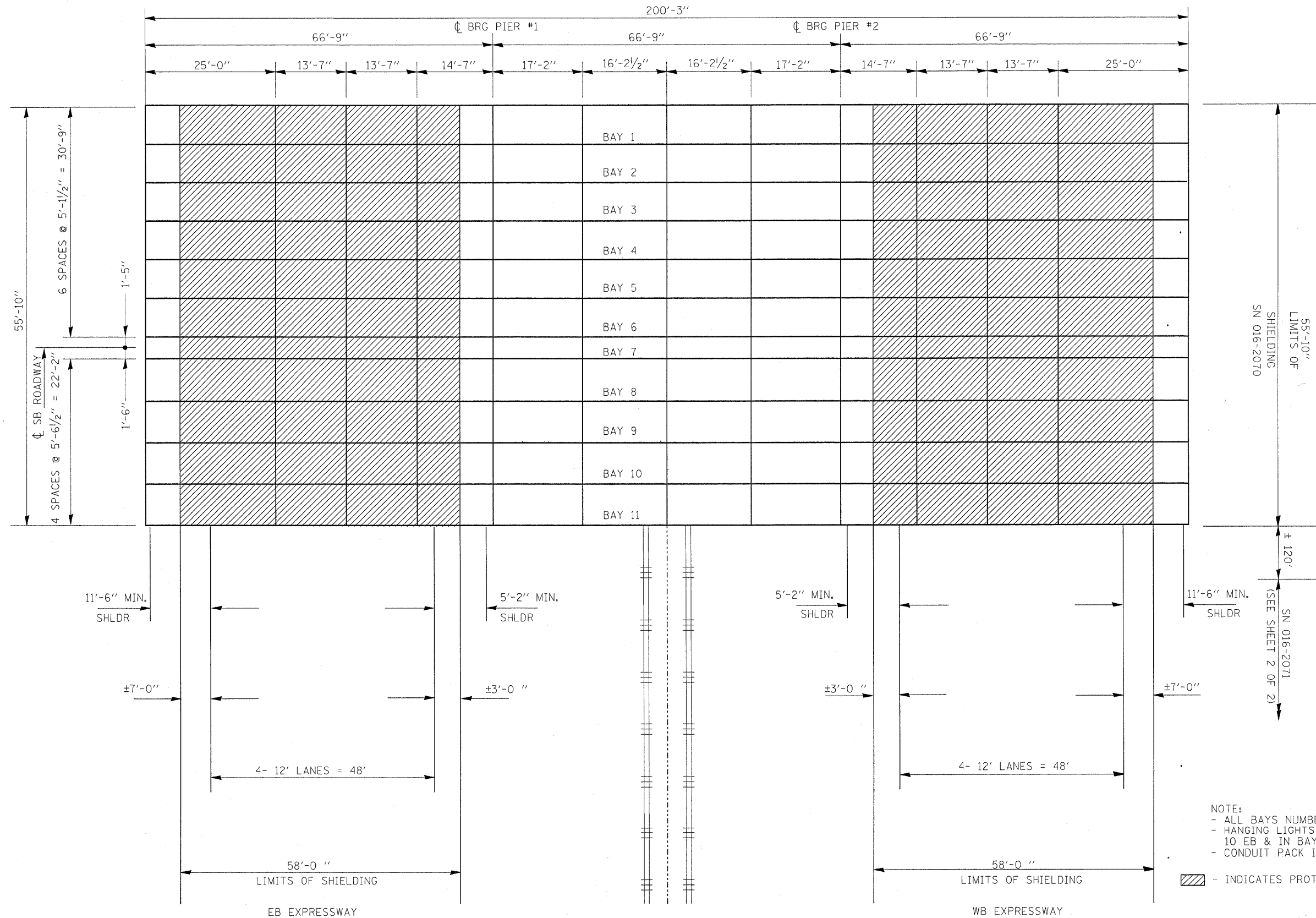


FILE NAME = c:\projects\dl37207\designoa.dgn	USER NAME = handanah	DESIGNED -	REVISED -	STATE OF ILLINOIS DEPARTMENT OF TRANSPORTATION	STRUCTURE PLAN OLD ORCHARD RD OVER I-94 (EDENS) LOCATION 1: SN 016-0823		F.A.I. RTE. 94	SECTION 2007-040 I	COUNTY COOK / WILL	TOTAL SHEETS 19	SHEET NO. 7	
PLOT SCALE = 50.0000' / IN.	CHECKED -	REVISED -	REVISED -		SCALE:	SHEET NO. OF SHEETS	STA. TO STA.	FED. ROAD DIST. NO. 1 ILLINOIS FED. AID PROJECT				
PLOT DATE = 12/21/2007	DATE -	REVISED -	REVISED -		CONTRACT NO. 60028							



BRG SOUTH ABUTMENT

BRG NORTH ABUTMENT



NOTE:

- ALL BAYS NUMBERED WEST TO EAST
- HANGING LIGHTS TYPICAL IN BAYS 3 & 10 EB & IN BAYS 4 & 10 WB.
- CONDUIT PACK IN BAYS 1, 8, 9, & 11.

▨ - INDICATES PROTECTIVE SHIELDING

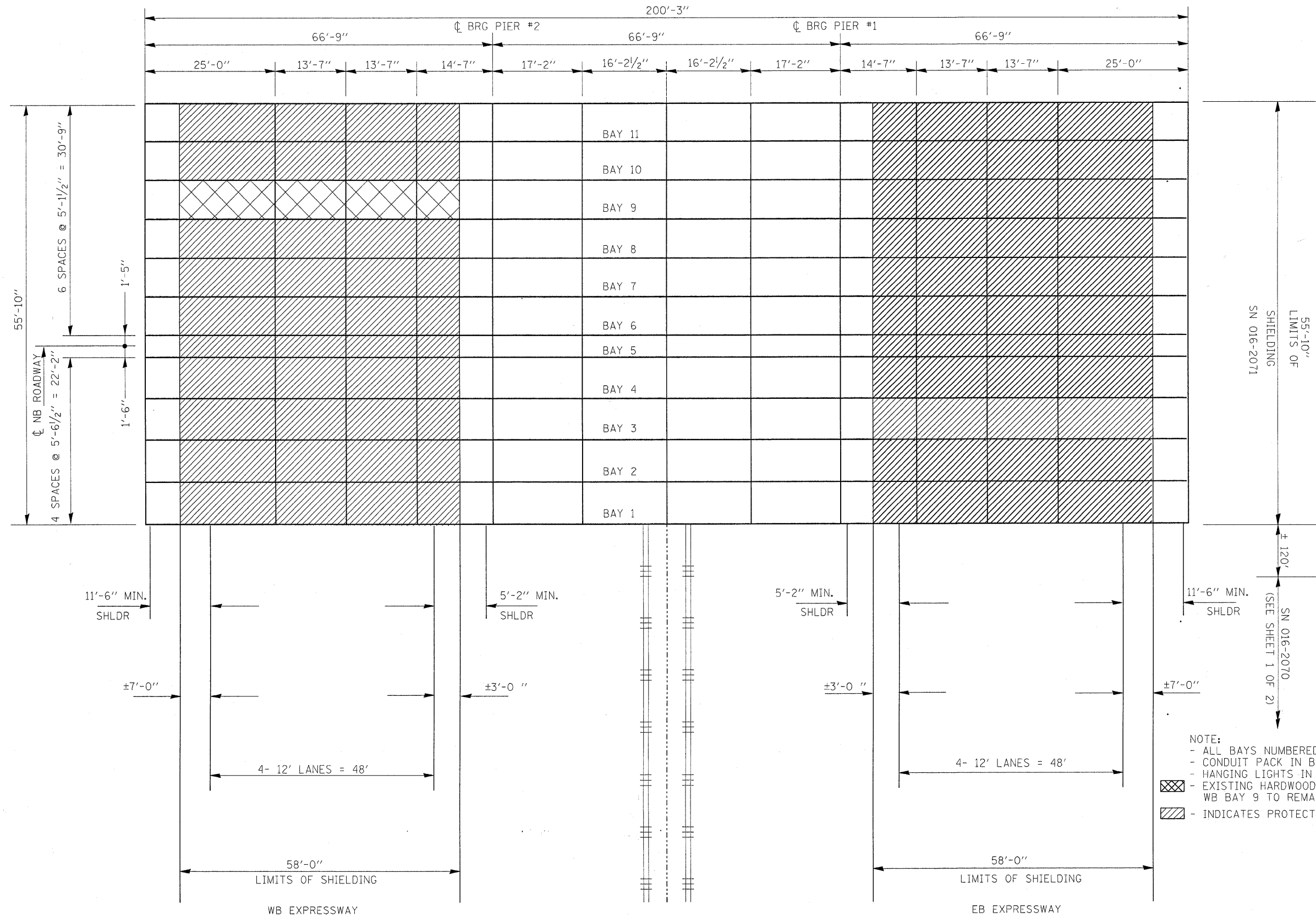
FILE NAME = c:\projects\dl37207\design\aa.dgn	USER NAME = hamdanah	DESIGNED -	REVISED -	STATE OF ILLINOIS DEPARTMENT OF TRANSPORTATION	STRUCTURE PLAN INDEPENDENCE BLVD OVER I-290 (EISENHOWER) LOCATION 2: SN 016-2070			F.A.I. RTE. 290	SECTION 2007-040 1	COUNTY COOK / WILL	TOTAL SHEETS 19	SHEET NO. 8			
	PLOT SCALE = 5/8" = 1' IN.	CHECKED -	REVISED -					SCALE: SHEET NO. OF SHEETS STA. TO STA.				FED. ROAD DIST. NO. 1 ILLINOIS FED. AID PROJECT			
	PLOT DATE = 12/21/2007	DATE -	REVISED -					CONTRACT NO. 60D28							

☐ F.A.I. RTE. I-290

☐ CTA

BRG NORTH ABUTMENT

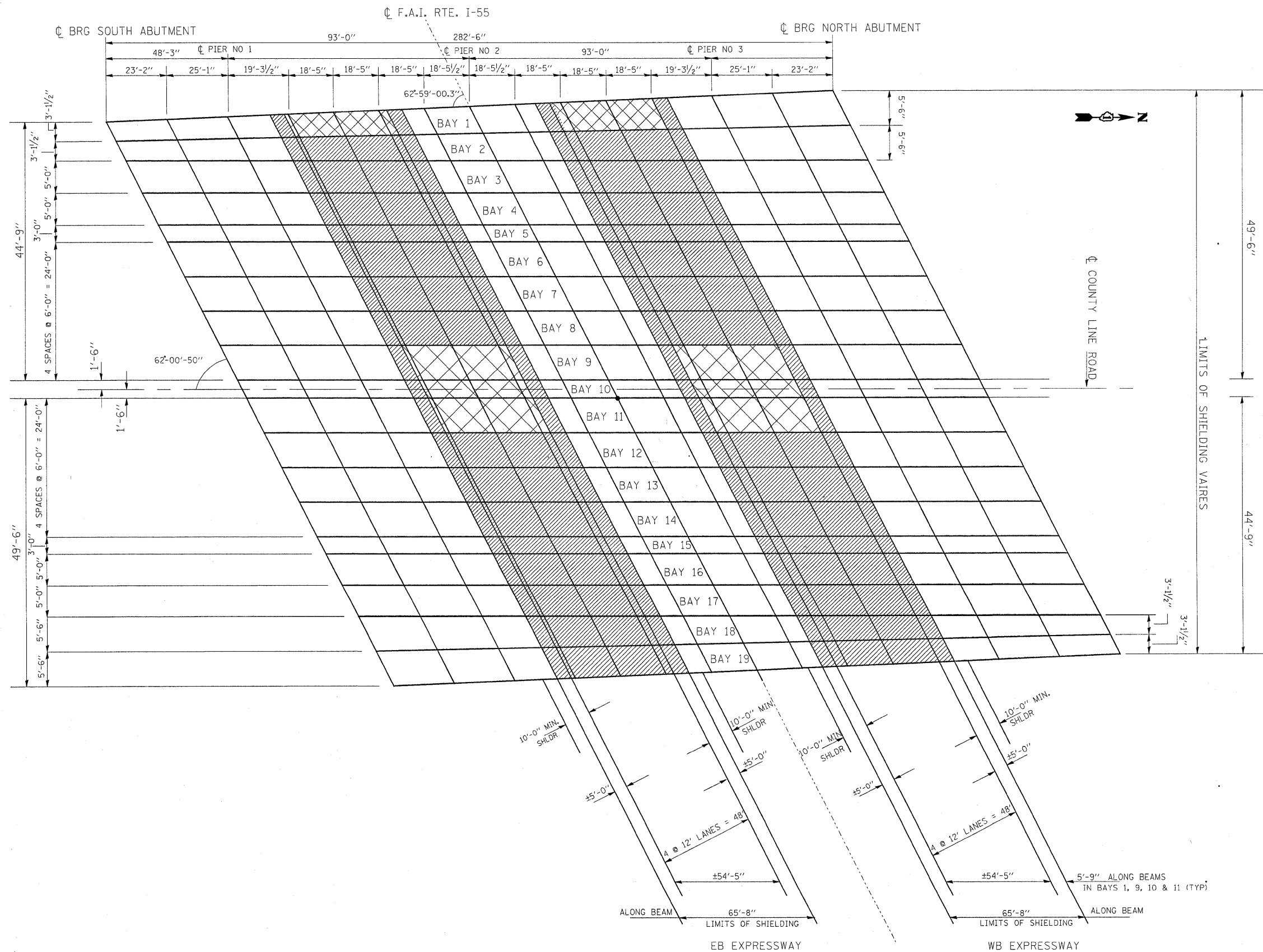
BRG SOUTH ABUTMENT



NOTE:
 - ALL BAYS NUMBERED WEST TO EAST
 - CONDUIT PACK IN BAYS 1, 2, 3 & 11.
 - HANGING LIGHTS IN BAY 10
 - EXISTING HARDWOOD SHIELDING IN WB BAY 9 TO REMAIN
 - INDICATES PROTECTIVE SHIELDING

FRAMING PLAN

FILE NAME = c:\projects\d137207\designnaa.dgn	USER NAME = hamdanah	DESIGNED -	REVISED -	STATE OF ILLINOIS DEPARTMENT OF TRANSPORTATION	STRUCTURE PLAN INDEPENDENCE BLVD OVER I-290 (EISENHOWER) LOCATION 2: SN 016-2071			F.A.I. RTE. 290	SECTION 2007-040 I	COUNTY COOK / WILL	TOTAL SHEETS 19	SHEET NO. 9
PLOT SCALE = 50.0000' / IN.		DRAWN -	REVISED -		SCALE:	SHEET NO. OF SHEETS	STA.	TO STA.	FED. ROAD DIST. NO. 1 ILLINOIS FED. AID PROJECT		CONTRACT NO. 60D28	
PLOT DATE = 12/21/2007		CHECKED -	REVISED -									
		DATE -	REVISED -									

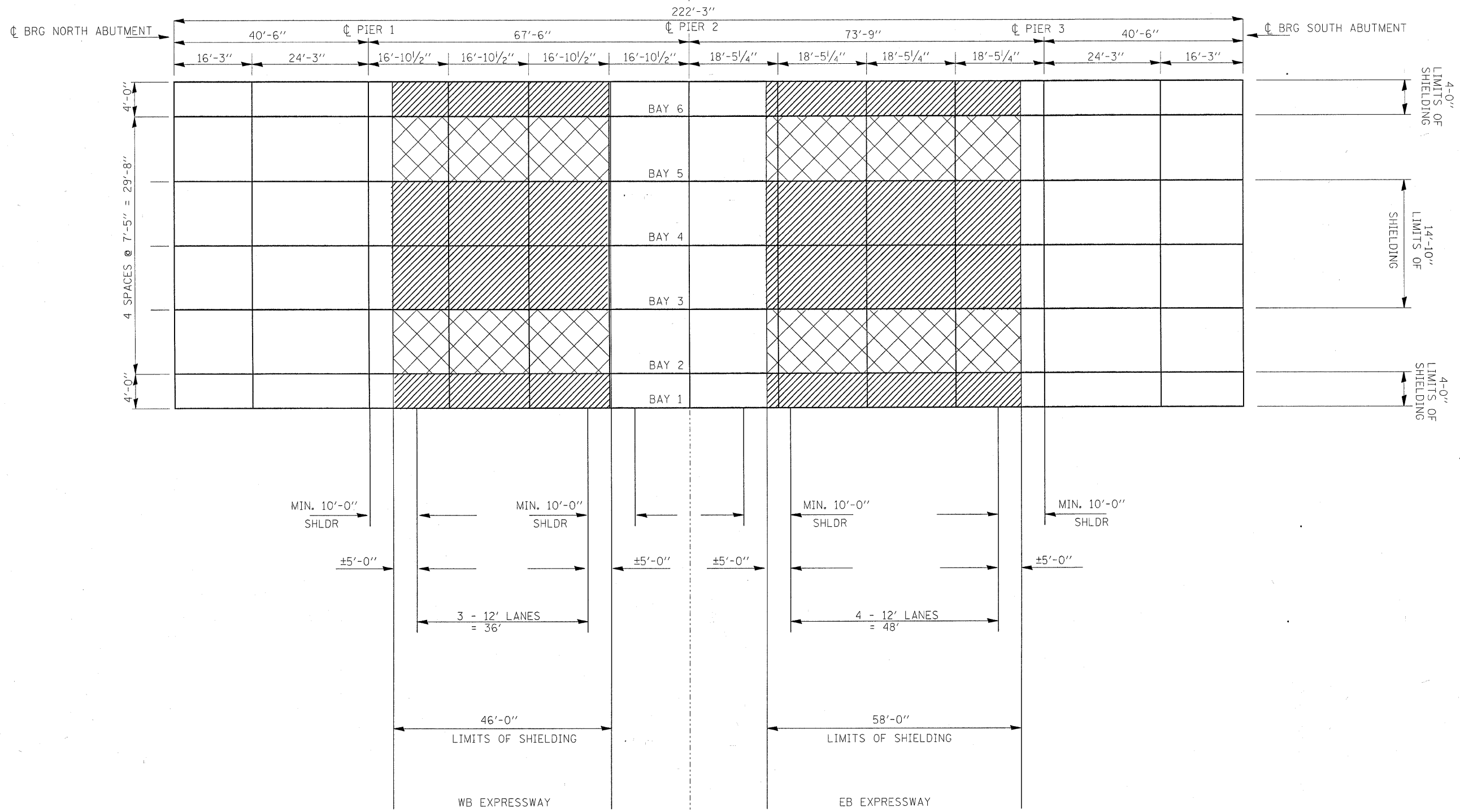


NOTE:
 [Cross-hatched] - EXISTING SHIELDING IN BAY'S 1, 9, 10 & 11 TO REMAIN, SHIELDING SHALL BE EXTENDED AS SHOWN
 [Diagonal hatched] - INDICATES PROTECTIVE SHIELDING

FRAMING PLAN

FILE NAME = c:\projects\dl37207\design\aa.dgn	USER NAME = hamdanah	DESIGNED -	REVISED -	STATE OF ILLINOIS DEPARTMENT OF TRANSPORTATION	STRUCTURE PLAN COUNTY LINE RD OVER I-55 (STEVENSON) LOCATION 3; SN 016-0587			F.A.I. RTE. 55	SECTION 2007-040 I	COUNTY COOK / WILL	TOTAL SHEETS 19	SHEET NO. 10
PLOT SCALE = 50.0000' / IN.	CHECKED -	REVISED -	REVISED -		SCALE:	SHEET NO.	OF SHEETS	STA.	TO STA.	CONTRACT NO.		
PLOT DATE = 12/21/2007	DATE -	REVISED -	REVISED -		FED. ROAD DIST. NO. 1 ILLINOIS FED. AID PROJECT							

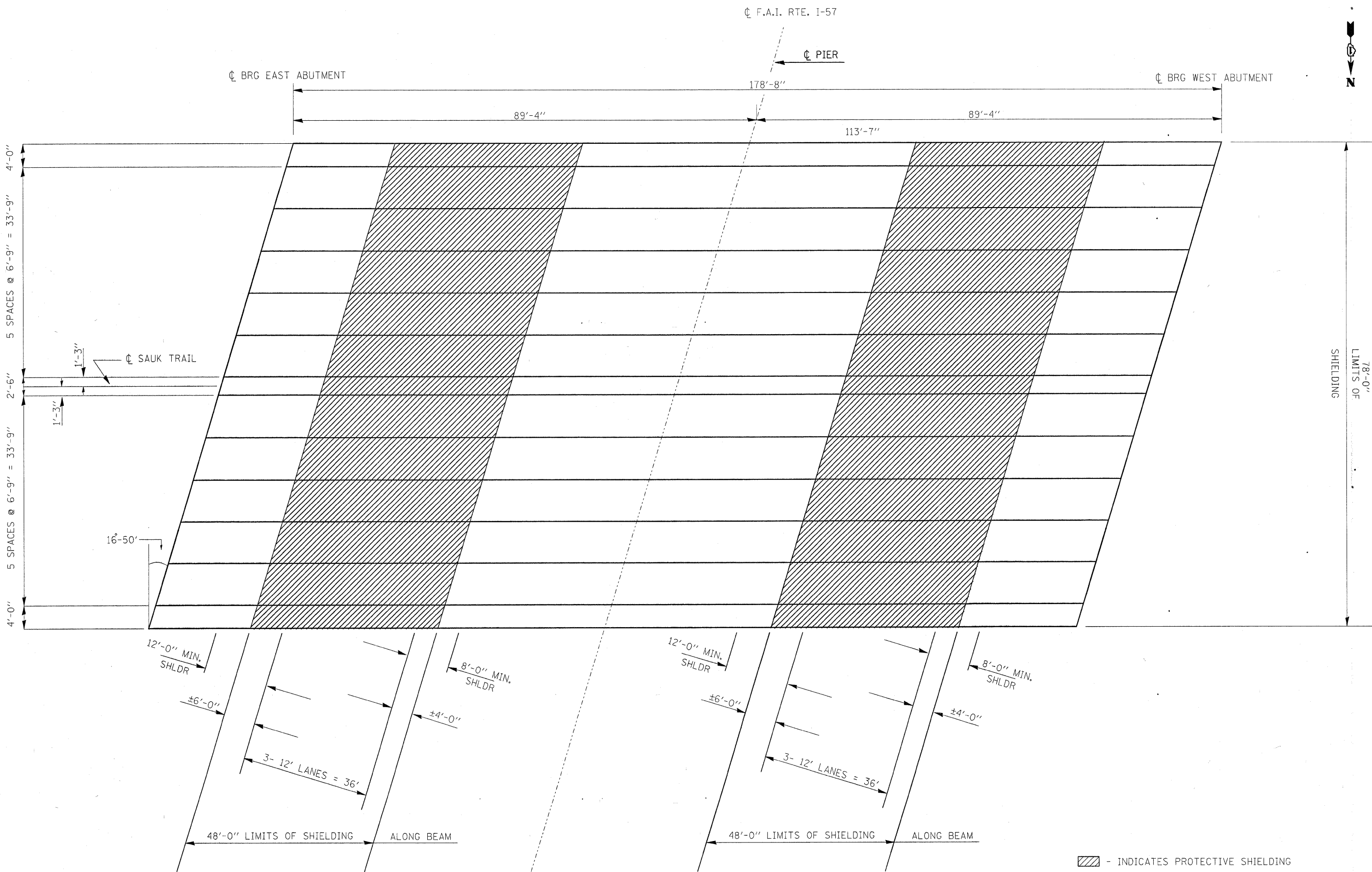
☉ F.A.I. RTE. I-80



FRAMING PLAN

- NOTE:
- ALL BAYS NUMBERED WEST TO EAST
 - ▣ - EXISTING SHIELDING IN BAYS 2 & 5 TO REMAIN
 - ▨ - INDICATES PROTECTIVE SHIELDING

FILE NAME = c:\projects\dl37207\designoa.dgn	USER NAME = hamdanah	DESIGNED -	REVISED -	STATE OF ILLINOIS DEPARTMENT OF TRANSPORTATION	STRUCTURE PLAN OAK PARK AVE OVER I-80 LOCATIONS 4: SN 016-0927			F.A.I. RTE.	SECTION	COUNTY	TOTAL SHEETS	SHEET NO.
	PLOT SCALE = 50.0000' / IN.	DRAWN -	REVISED -		80	2007-040 I	COOK / WILL	19	11			
PLOT DATE = 12/21/2007	CHECKED -	REVISED -	SCALE:		SHEET NO.	OF	SHEETS	STA.	TO STA.	FED. ROAD DIST. NO. 1	ILLINOIS	FED. AID PROJECT
	DATE -	REVISED -				CONTRACT NO.	60028					



NB EXPRESSWAY

FRAMING PLAN

SB EXPRESSWAY

▨ - INDICATES PROTECTIVE SHIELDING

FILE NAME =
c:\projects\dl37287\design\design.dgn

USER NAME = hamdenh
PLOT SCALE = 50,0000 ' / IN.
PLOT DATE = 12/21/2007

DESIGNED -
DRAWN -
CHECKED -
DATE -

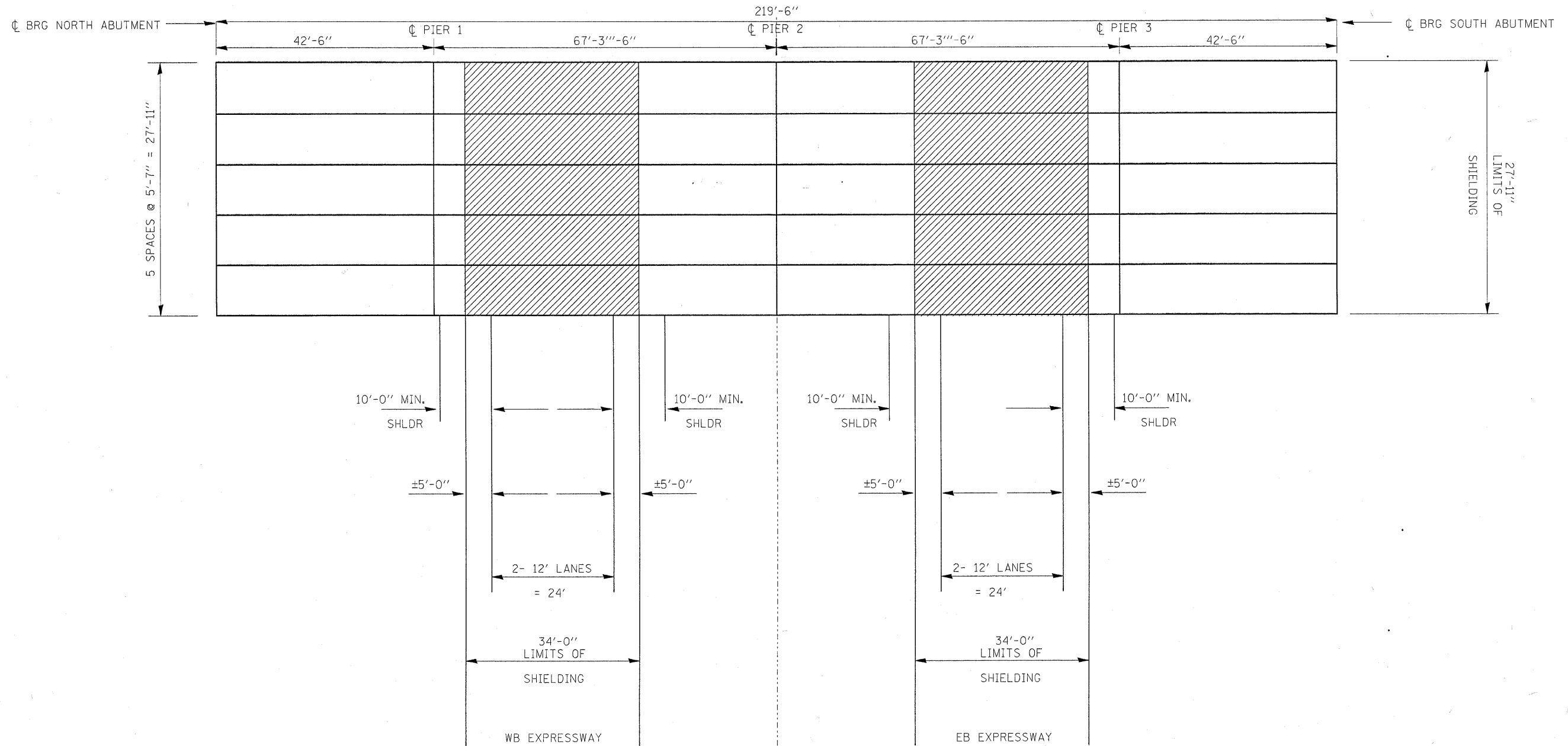
REVISED -
REVISED -
REVISED -
REVISED -

STATE OF ILLINOIS
DEPARTMENT OF TRANSPORTATION

STRUCTURE PLAN
SAUK TRAIL OVER I-57
LOCATION 5: SN 016-0575
SCALE: SHEET NO. OF SHEETS STA. TO STA.

F.A.I. RTE. 57	SECTION 2007-040 1	COUNTY COOK / WILL	TOTAL SHEETS 19	SHEET NO. 12
FED. ROAD DIST. NO. 1 ILLINOIS FED. AID PROJECT			CONTRACT NO. 60D28	

☐ F.A.I. RTE. I - 94

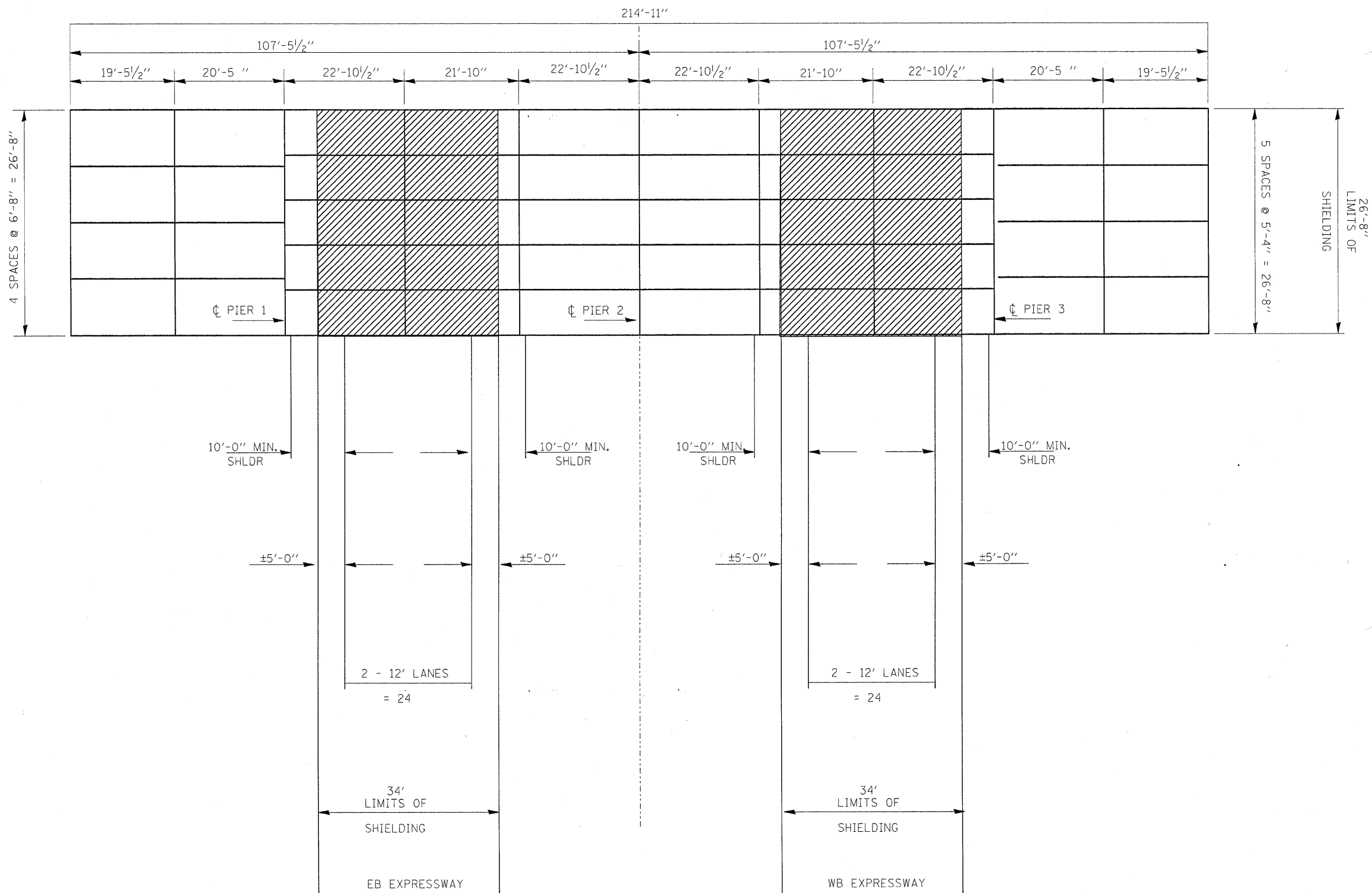


FRAMING PLAN

▨ - INDICATES PROTECTIVE SHIELDING

FILE NAME = c:\projects\dl37207\designee.dgn	USER NAME = hamdanah	DESIGNED -	REVISED -	STATE OF ILLINOIS DEPARTMENT OF TRANSPORTATION	STRUCTURE PLAN WOLF RD OVER I-80 LOCATION 6: SN 099-0192			F.A.I. RTE.	SECTION	COUNTY	TOTAL SHEETS	SHEET NO.
	PLOT SCALE = 50.0000' / IN.	CHECKED -	REVISED -					80	2007-040 I	COOK / WILL	19	13
	PLOT DATE = 12/21/2007	DATE -	REVISED -					SCALE: SHEET NO. OF SHEETS STA. TO STA.		FED. ROAD DIST. NO. 1 ILLINOIS FED. AID PROJECT		CONTRACT NO.

☐ F.A.I. RTE. I-80



FRAMING PLAN

▨ - INDICATES PROTECTIVE SHIELDING

FILE NAME =
c:\projects\dl37287\design\aa.dgn

USER NAME = hamdenah
PLOT SCALE = 50.0000' / IN.
PLOT DATE = 12/21/2007

DESIGNED -
DRAWN -
CHECKED -
DATE -

REVISED -
REVISED -
REVISED -
REVISED -

STATE OF ILLINOIS
DEPARTMENT OF TRANSPORTATION

STRUCTURE PLAN
RIVER ROAD OVER I-80
LOCATION 8: SN 099-0177

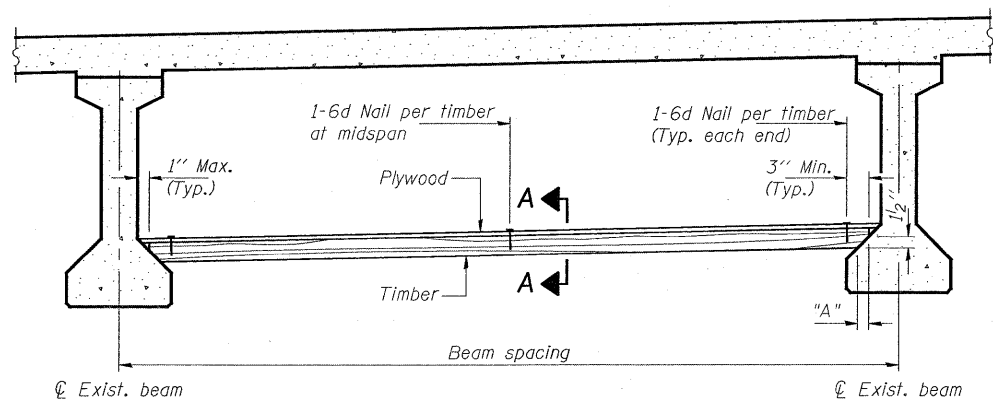
SCALE: SHEET NO. OF SHEETS STA. TO STA.

F.A.I. RTE.	SECTION	COUNTY	TOTAL SHEETS	SHEET NO.
80	2007-040 I	COOK / WILL	19	15
FED. ROAD DIST. NO. 1 [ILLINOIS] FED. AID PROJECT			CONTRACT NO. 60D28	

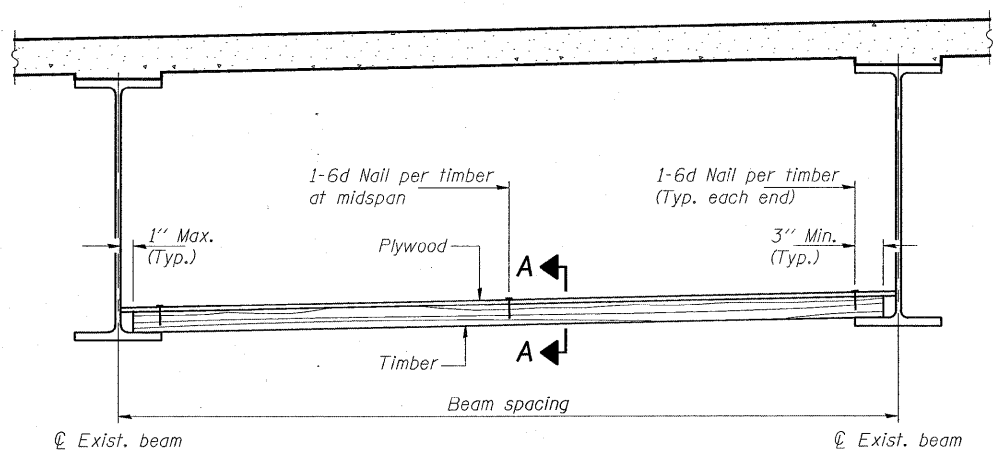
STATE OF ILLINOIS
DEPARTMENT OF TRANSPORTATION

ROUTE NO.	SECTION	COUNTY	TOTAL SHEETS	SHEET NO.	SHEET NO.
VAR	2007-0401	COOK/WILL	19	16	
FED. ROAD DIST. NO. 7	ILLINOIS		FED. AID PROJECT-		

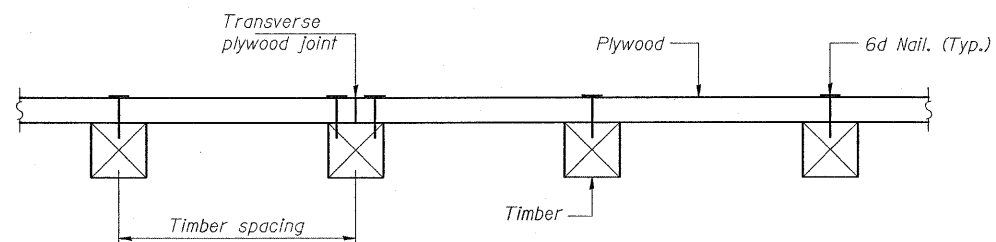
Contract Number: 60D28



PPC I-BEAMS AND BULB-T's



STEEL BEAMS



SECTION A-A

TIMBER SPACING

Beam Spacing (ft.)	Timber Sizes (in.)		
	4" x 4" with min. Fb=775 psi Fv=135 psi	4" x 6" with min. Fb=775 psi Fv=135 psi	6" x 6" with min. Fb=575 psi Fv=125 psi
	Maximum Timber Spacing (in.)		
4.5	16	16	16
4.75	16	16	16
5.0	16	16	16
5.25	16	16	16
5.5	16	16	16
5.75	16	16	16
6.0	16	16	16
6.25	12	16	16
6.5	12	16	16
6.75	12	16	16
7.0	8	16	16
7.25	8	16	16
7.5	8	16	16
7.75	8	16	16
8.0	8	12	16
8.25	8	12	16
8.5	6	12	12
8.75	6	12	12
9.0	6	8	12

PPC I-BEAMS AND BULB-T's

BEAM	"A"
36" I-Beam	1 1/2"
42" I-Beam	1 1/2"
48" I-Beam	1 1/2"
54" I-Beam	1 5/8"
63" Bulb-T	3 3/8"
72" Bulb-T	3 3/8"

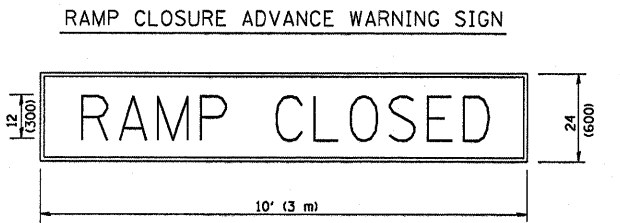
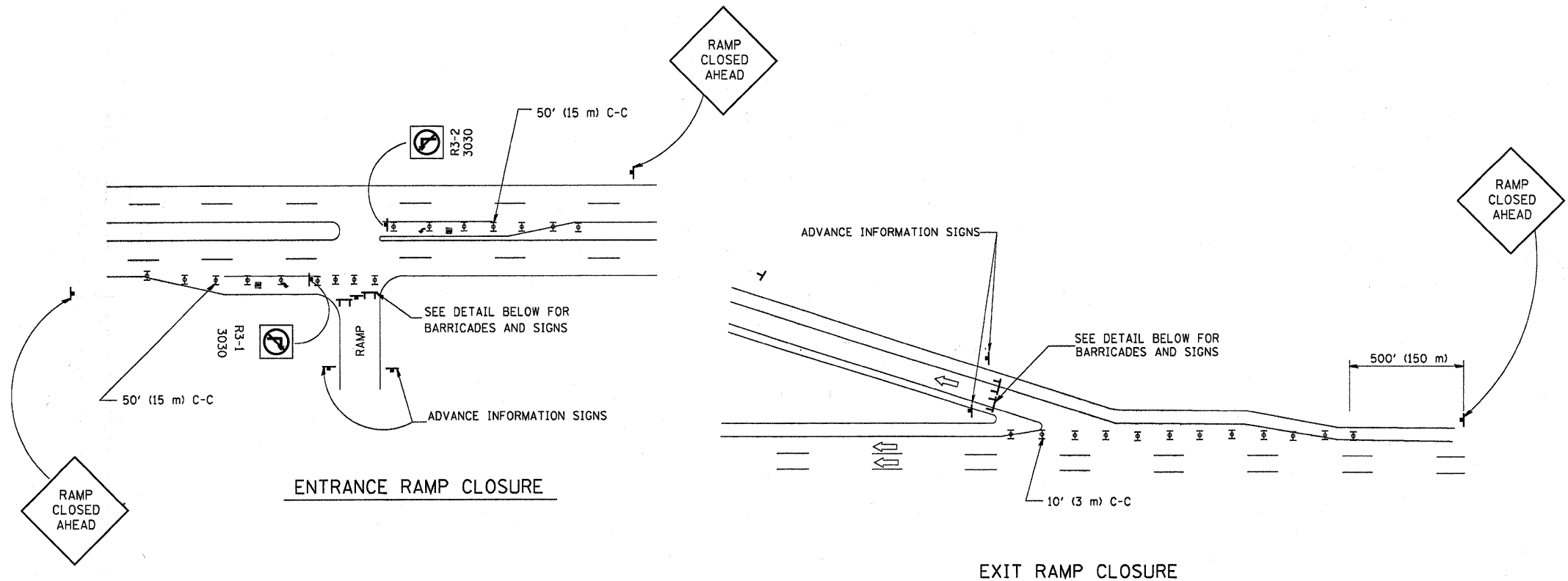
Notes: See special provision for Permanent Protective Shield System.
Timber sizes shown are nominal sizes. Rough sawn timber of the dimensions shown will also be considered acceptable.
The minimum Fb and Fv values shown are the tabulated design values given in the National Design Specification for Wood Construction for No. 2 Spruce-Fine-Fir without adjustment factors applied. Better grades or other species with equal or higher allowable stresses will also be considered acceptable.
The timber spacings shown have been determined using allowable stresses with all adjustment factors necessary for the anticipated service conditions.
All timber shall be treated.
Plywood shall be 5/8" Exterior type plywood.
Plywood shall be placed such that the face grain is perpendicular to the timber supports. When less than a full sheet (4' width) of plywood is used, the width of the strip used shall not be less than 2'.
Transverse plywood joints shall be supported by timbers.
When 4" x 6" timbers are used, they shall be placed such that the wide face is horizontal and the narrow face is vertical.
Design load = 200 psf.

BILL OF MATERIAL

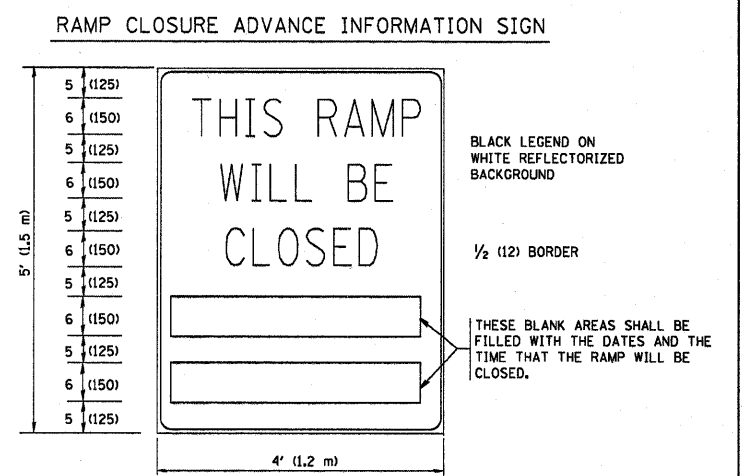
Item	Unit	Total
Protective Shield (Permanent)	Sq. Yd.	5052

PERMANENT PROTECTIVE SHIELD

F.A. RTE.	SECTION	COUNTY	TOTAL SHEETS	SHEET NO.
VAR 2007-040 I	COOK/WILL	19	17	
STA.	TO STA.			
FED. ROAD DIST. NO.	ILLINOIS	FED. AID PROJECT		



BLACK LEGEND ON ORANGE REFLECTORIZED BACKGROUND
1 (25) BORDER
THESE SIGNS ARE REQUIRED ON ALL THE EXIT GUIDE SIGNS FOR THE CLOSED EXIT RAMPS.



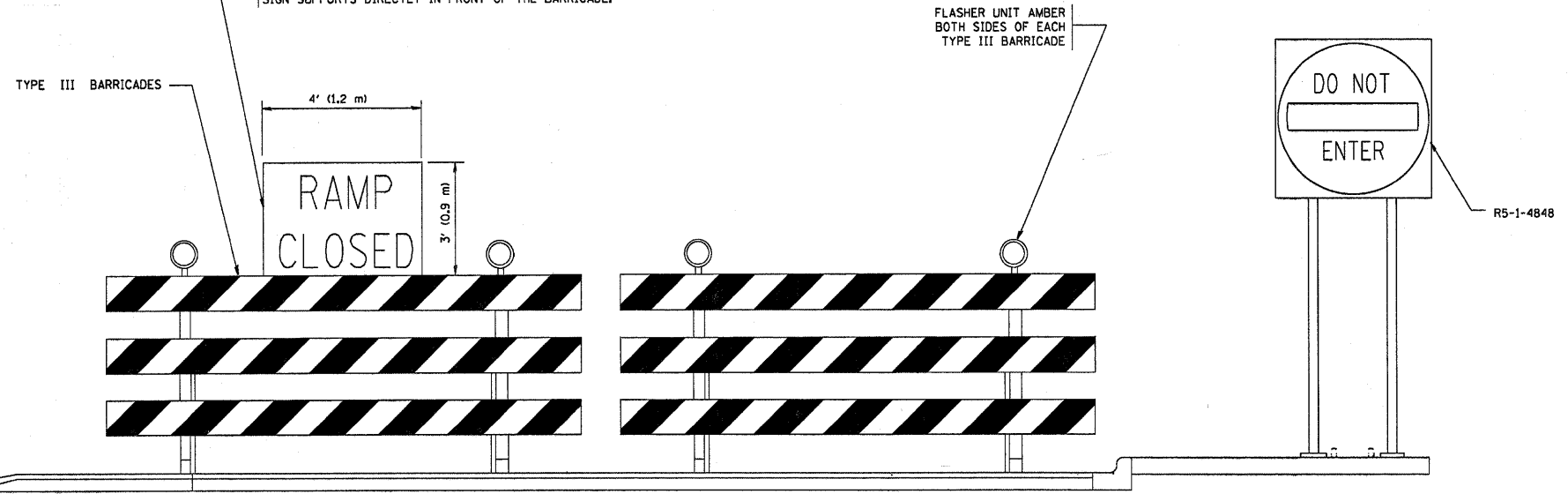
THESE SIGNS ARE REQUIRED ON BOTH SIDES OF THE RAMP, MINIMUM OF 1 WEEK IN ADVANCE OF THE CLOSURE.

GENERAL NOTES:

- CONES MAY BE SUBSTITUTED FOR DRUMS OR TYPE II BARRICADES DURING DAY OPERATIONS. CONES SHALL BE A MINIMUM OF 28 (700) HIGH.
- STEADY BURN LIGHTS WILL NOT BE REQUIRED FOR DAY OPERATIONS.
- A FLAGGER SHALL BE POSITIONED AT EACH CLOSED RAMP THAT IS OPEN TO CONSTRUCTION VEHICLES.
- ALL ROUTE MARKERS AND TRAILBLAZER ASSEMBLIES WHICH DIRECT MOTORISTS TO A CLOSED ENTRANCE RAMP SHALL BE COVERED.
- THE SIGNING AND BARRICADING WHICH IS REQUIRED BY THIS DETAIL SHALL BE INCLUDED IN THE COST OF TRAFFIC CONTROL AND PROTECTION (EXPRESSWAYS).
- AUTHORIZATION FROM THE DISTRICT'S BUREAU OF TRAFFIC IS REQUIRED FOR ALL RAMP CLOSURES.
- THE RAMP CLOSURE ADVANCE INFORMATION SIGNS SHALL BE ERECTED. IF THE CLOSURE TIME EXCEEDS TWENTY-FOUR (24) HOURS, ADDITIONAL ADVANCE WARNING SIGNS ON EXIT GUIDE SIGNING WILL BE REQUIRED FOR EXIT RAMP CLOSURES THAT EXCEED TWENTY FOUR (24) HOURS IN LENGTH.

ALL DIMENSIONS ARE IN INCHES (MILLIMETERS) UNLESS OTHERWISE SHOWN.

THE "RAMP CLOSED" SIGN SHALL BE B/W WITH 8 (200) CAPS. IF A TYPE III BARRICADE WITH AN ATTACHED SIGN PANEL WHICH MEETS NCHRP 350 IS NOT AVAILABLE, THE SIGNS MAY BE MOUNTED ON NCHRP 350 TEMPORARY SIGN SUPPORTS DIRECTLY IN FRONT OF THE BARRICADE.



DETAIL FOR REQUIRED BARRICADES & SIGNS

- SYMBOLS**
- ☐ TYPE II BARRICADE, DRUM OR VERTICAL BARRICADE WITH STEADY BURN MONO-DIRECTIONAL LIGHT
 - ☐ TYPE III BARRICADE WITH FLASHING LIGHT

REVISIONS	
NAME	DATE
DWS	2-83
DWS	1/90
DWS	9/94
DWS	12/94
DWS/JAF	12/02
JAF	2/06
SPB	1/07
Revise devices to meet NCHRP 350	4/03

ILLINOIS DEPARTMENT OF TRANSPORTATION

FREWAY ENTRANCE AND EXIT RAMP CLOSURE DETAILS

SCALE: NONE

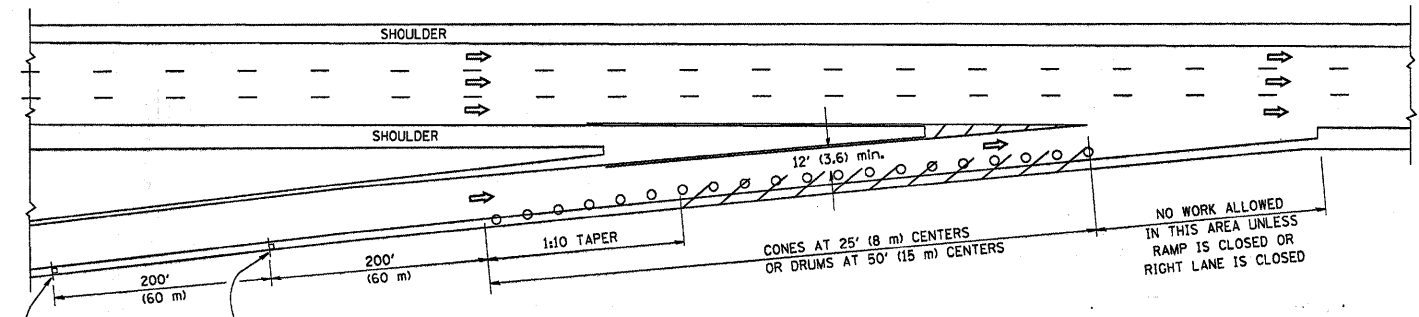
DRAWN BY _____
CHECKED BY _____

PLOT DATE = 3/16/2007
FILE NAME = K:\dashed\60d28.dgn
PLOT SCALE = 5/8" = 1' IN.
USER NAME = bward

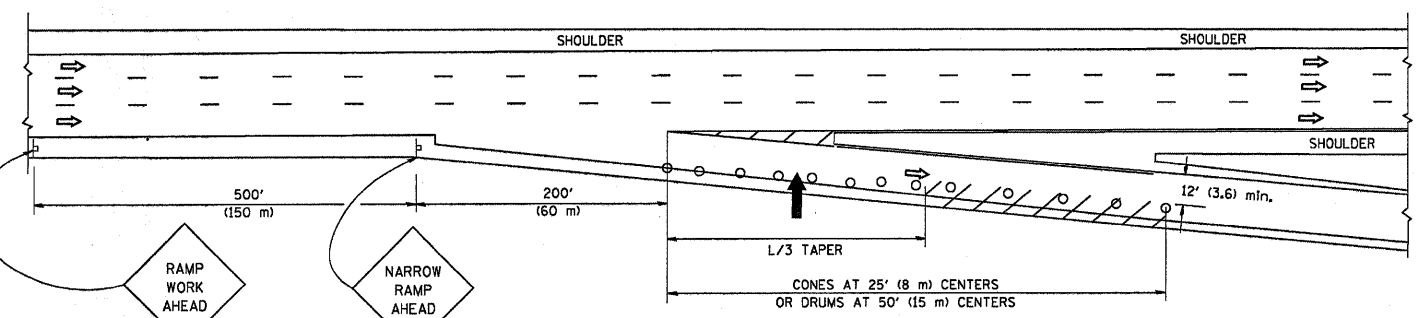
PARTIAL RAMP CLOSURE DETAILS

SHOULDER CLOSURE DETAILS

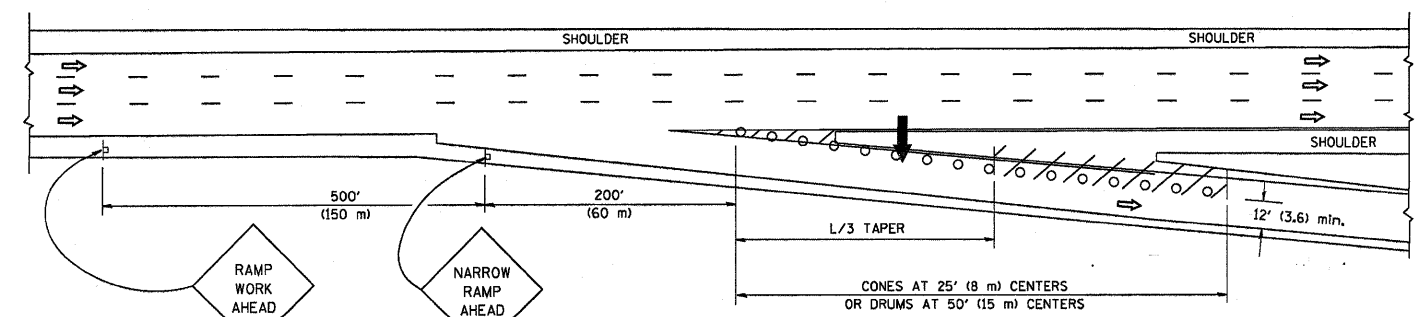
F.A. RTE.	SECTION	COUNTY	TOTAL SHEETS	SHEET NO.
VAR 2007-0401	COOK/WILL	19	18	
STA.	TO STA.			
FED. ROAD DIST. NO.	ILLINOIS	FED. AID PROJECT		



TYPICAL ENTRANCE RAMP



TYPICAL EXIT RAMP



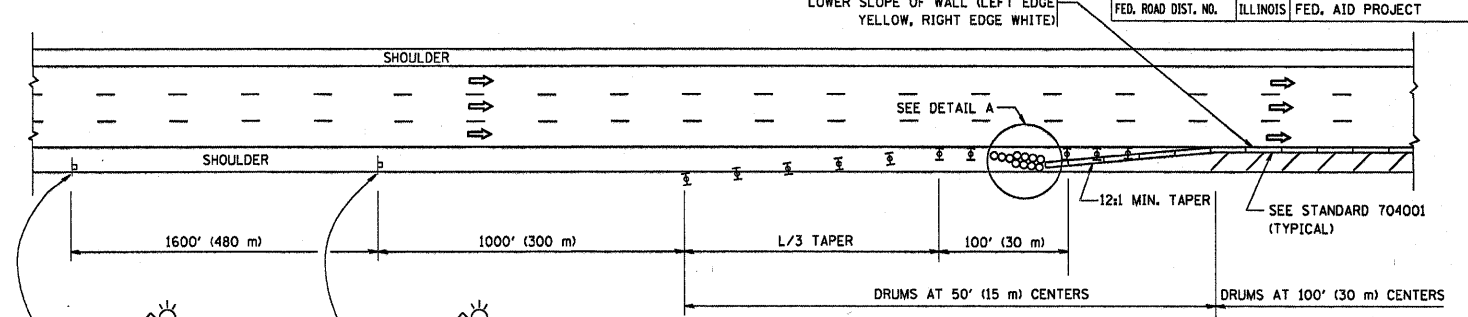
TYPICAL EXIT RAMP

SYMBOLS

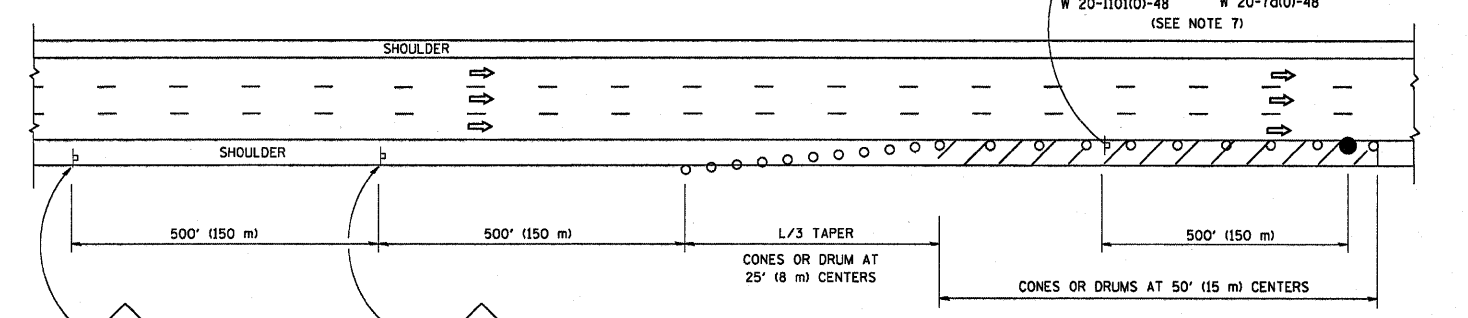
- ARROWBOARD
- WORK AREA
- SIGN ON PORTABLE OR PERMANENT SUPPORT
- FLAGGER WITH CONTROL SIGN
- TYPE II BARRICADE, DRUM OR VERTICAL BARRICADE WITH STEADY BURN MONO-DIRECTIONAL LIGHT
- CONE, DRUM OR BARRICADE

GENERAL NOTES

1. THE "L" DISTANCE EQUALS:
 SPEED LIMIT FORMULAS
 45 mph (80 km/h) METRIC ENGLISH
 OR GREATER: L=0.65(W/S) L=(W/S)
 W = WIDTH OF OFFSET IN FEET (METERS)
 S = NORMAL POSTED SPEED MPH (KM/H)
2. PLASTIC DRUMS WITH HIGH PERFORMANCE REFLECTIVE SHEETING AND STEADY BURNING LIGHTS ARE REQUIRED FOR ALL NIGHTTIME CLOSURES.
3. ALL SIGNS SHALL BE POST MOUNTED IF THE CLOSURE TIME EXCEEDS FOUR DAYS.
4. FLASHING LIGHTS SHALL BE USED DURING THE HOURS OF DARKNESS AND SHALL BE INSTALLED ABOVE THE FIRST TWO SETS OF SIGNS.



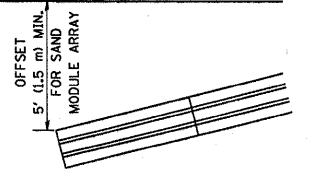
PERMANENT SHOULDER CLOSURE



DAYTIME SHOULDER CLOSURE

THIS DETAIL IS USED WHERE:
 1. VEHICLES, EQUIPMENT, WORKERS OR THEIR ACTIVITIES ENCR OACH IN AN AREA CLOSER THAN 15' (4.5 m) TO THE EDGE OF PAVEMENT FOR A PERIOD IN EXCESS OF 15 MINUTES.

ARRAY DESIGN PER MANUFACTURER TO BE NCHRP 350 COMPLIANT FOR POSTED SPEED.



DETAIL "A" IMPACT ATTENUATOR, TEMPORARY (SEE NOTE 5)

ALL DIMENSIONS ARE IN INCHES (MILLIMETERS) UNLESS OTHERWISE SHOWN.

REVISIONS	
NAME	DATE
DWS	11/96
JAF	12/02
NCHRP 350	04/03
JAF	2/06
SPB	1/07

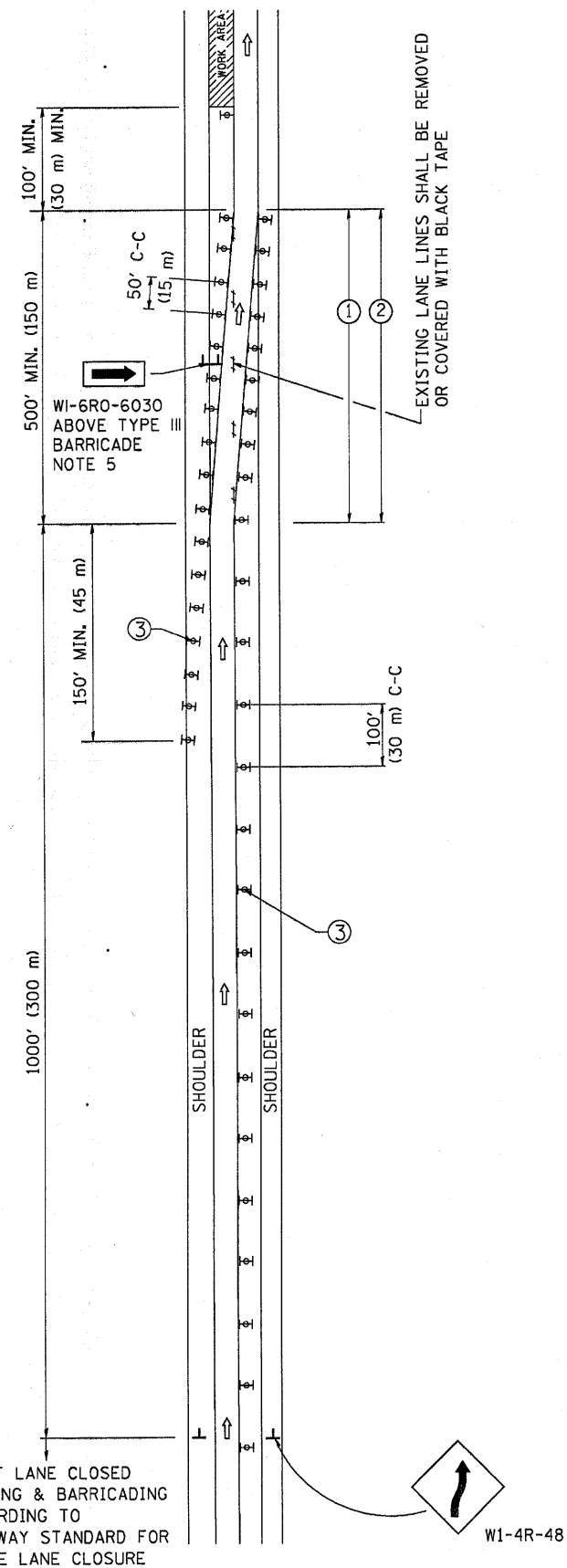
ILLINOIS DEPARTMENT OF TRANSPORTATION
 TRAFFIC CONTROL DETAILS
 FOR FREEWAY
 SHOULDER CLOSURES
 PARTIAL RAMP CLOSURES

DESIGNED BY: DWS
 DRAWN BY:
 CHECKED BY:
 SCALE: NONE
 TC-17

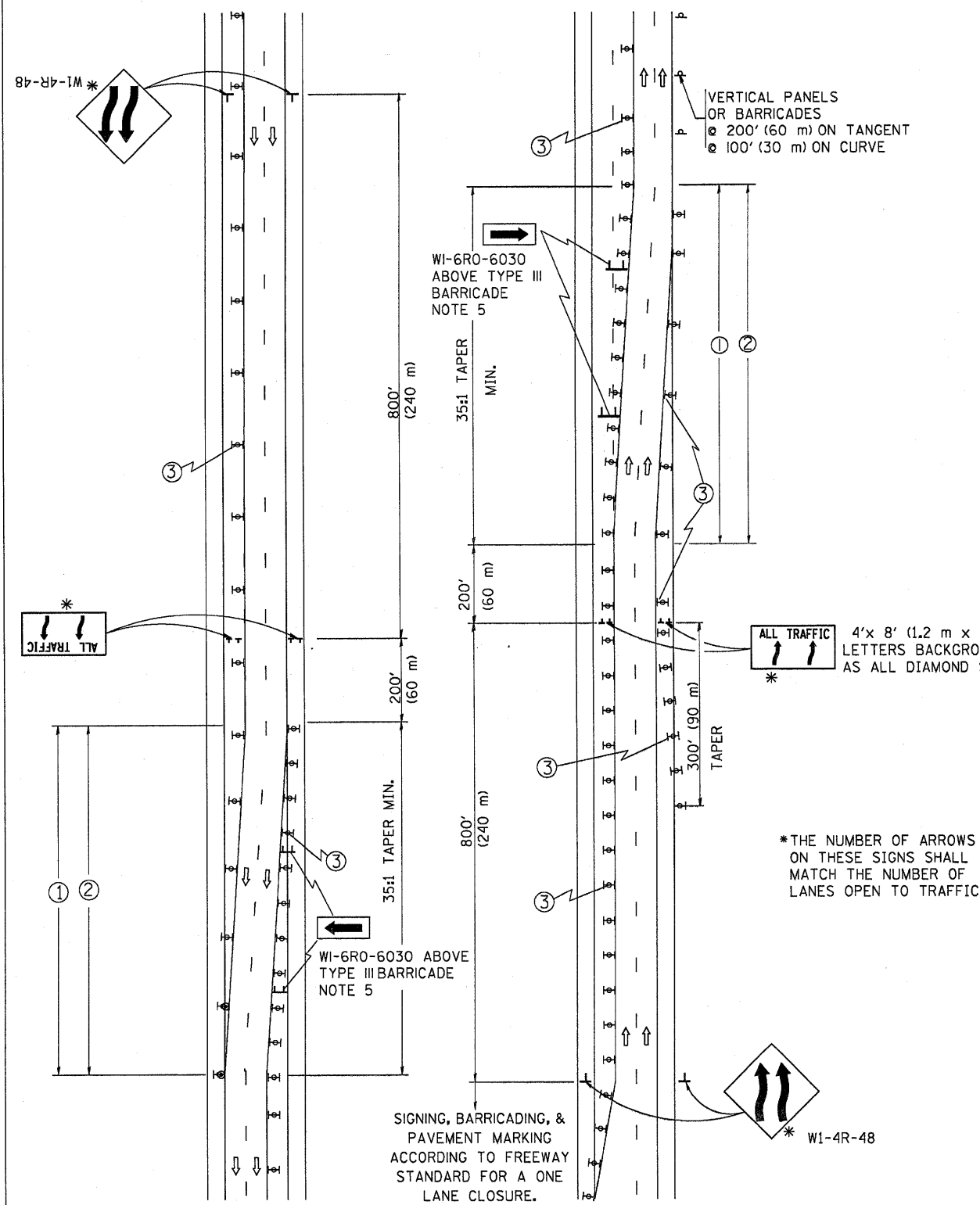
PLOT DATE = 3/7/2007
 FILE NAME = K:\asst\1117.dgn
 PLOT SCALE = 1/8"=1'-0"
 USER NAME = bward1

F.A. RTE.	SECTION	COUNTY	TOTAL SHEETS	SHEET NO.
VAR	2007-040 I	COOK/WILL	19	19
STA.		TO STA.		
FED. ROAD DIST. NO.	ILLINOIS	FED. AID PROJECT		

SINGLE LANE WEAVE



MULTI-LANE WEAVE



GENERAL NOTES

- EXISTING CONFLICTING PAVEMENT MARKING LINES SHALL BE REMOVED OR COVERED WITH BLACK TAPE. PAVEMENT MARKING REMOVAL OR BLACK TAPE SHALL NOT BE REQUIRED FOR LANE CLOSURES UNDER 24 HOURS IN DURATION.
- CONTINUOUS REFLECTIVE TEMPORARY PAVEMENT MARKING TAPE SHALL BE PLACED THROUGHOUT THE TAPER AND FOR 300' (90 m) ALONG SIDE THE WORK AREA WHERE THE CLOSURE TIME IS GREATER THAN FOURTEEN DAYS. THE LEFT EDGE LINE SHALL BE YELLOW AND THE RIGHT EDGE LINE SHALL BE WHITE. FOR MULTI-LANE WEAVE LANE LINES SHALL BE 10'-30' (3 m-9 m) SKIP DASH, WHITE.
- PLASTIC DRUMS WITH STEADY BURN LIGHTS AT 50' (15 m) C-C SPACING IN TAPERS AND 100' (30 m) C-C SPACING IN TANGENTS.
- ALL SIGNS SHALL BE POST MOUNTED IF THE CLOSURE TIME EXCEEDS FOUR DAYS.
- IF A TYPE III BARRICADE WITH AN ATTACHED SIGN PANEL WHICH MEETS NCHRP 350 IS NOT AVAILABLE, THE SIGNS MAY BE MOUNTED ON NCHRP 350 TEMPORARY SIGN SUPPORTS DIRECTLY IN FRONT OF THE BARRICADE.
- IF THE WIDTH OF OFFSET IS LESS THAN 6' THEN THE TYPE III BARRICADE WITH ATTACHED ARROW SIGN PANEL CAN BE ELIMINATED IN THE TAPER AREAS.

SYMBOLS

- ↑ DIRECTION OF TRAFFIC
- ▨ WORK AREA
- ┆ SIGN ON PORTABLE OR PERMANENT SUPPORT
- ⊞ TYPE II BARRICADE, DRUM OR VERTICAL BARRICADE WITH MONO-DIRECTIONAL STEADY BURNING LIGHT

ALL DIMENSIONS ARE IN INCHES (MILLIMETERS) UNLESS OTHERWISE SHOWN

REVISIONS	
NAME	DATE
DWS	2/87
DWS	1/90
DWS	12/27/94
DWS	11/96
JAF	4/03
JAF	2/06
SPB	1/07

ILLINOIS DEPARTMENT OF TRANSPORTATION
TRAFFIC CONTROL DETAILS
FOR FREEWAY
SINGLE & MULTI-LANE WEAVE

SCALE: NONE

DRAWN BY R.H.
CHECKED BY

TC-9