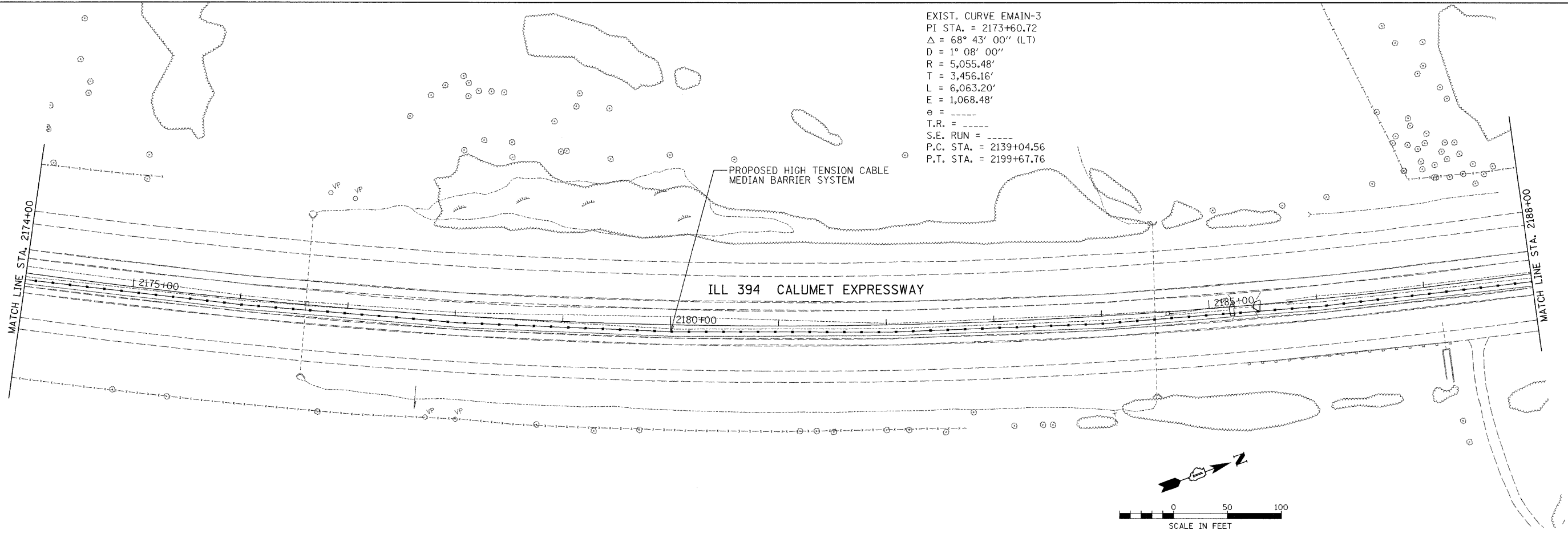
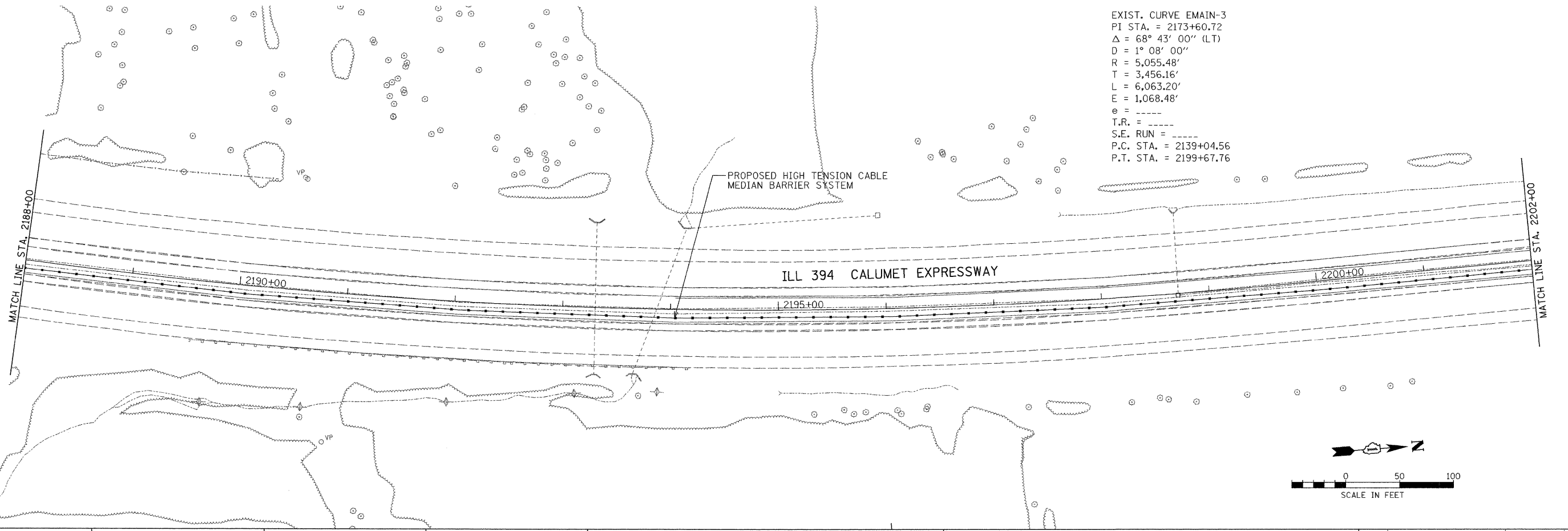


EXIST. CURVE EMAIN-3
 PI STA. = 2173+60.72
 $\Delta = 68^\circ 43' 00''$ (LT)
 D = 1° 08' 00"
 R = 5,055.48'
 T = 3,456.16'
 L = 6,063.20'
 E = 1,068.48'
 e = ----
 T.R. = ----
 S.E. RUN = ----
 P.C. STA. = 2139+04.56
 P.T. STA. = 2199+67.76



EXIST. CURVE EMAIN-3
 PI STA. = 2173+60.72
 $\Delta = 68^\circ 43' 00''$ (LT)
 D = 1° 08' 00"
 R = 5,055.48'
 T = 3,456.16'
 L = 6,063.20'
 E = 1,068.48'
 e = ----
 T.R. = ----
 S.E. RUN = ----
 P.C. STA. = 2139+04.56
 P.T. STA. = 2199+67.76



h:\jobs\2006\20063028-32\CAD\DOT - Trans\vdgr\00\ILL394_Plan08.dgn
 1/2/2008 10:54:29 AM

FILE NAME = #FILEL#	USER NAME = .USER.	DESIGNED -	REVISED -	STATE OF ILLINOIS DEPARTMENT OF TRANSPORTATION	EXISTING AND PROPOSED ROADWAY PLAN			F.A.P RTE. 332	SECTION 2007-044 I	COUNTY WILL & COOK	TOTAL SHEETS 53	SHEET NO. 13		
PLOT SCALE = 50.0000' / 1".		DRAWN -	REVISED -					SCALE: 1" = 50'			FED. ROAD DIST. NO.		ILLINOIS FED. AID PROJECT	
PLOT DATE = 1/2/2008		CHECKED -	REVISED -					SHEET NO. OF SHEETS			CONTRACT NO. 60D34			
		DATE -	REVISED -					STA. TO STA.						