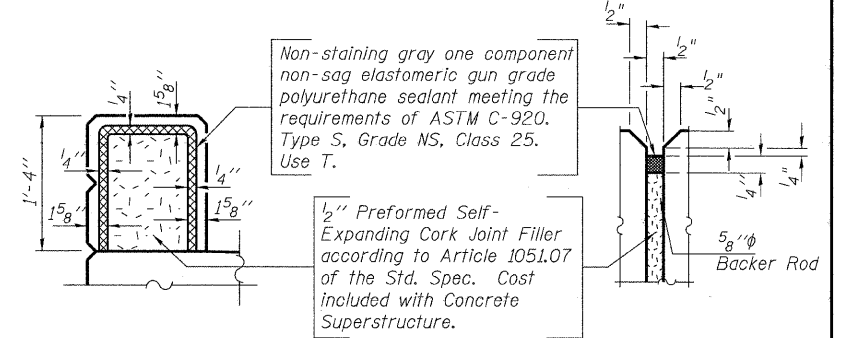


STATE OF ILLINOIS
DEPARTMENT OF TRANSPORTATION

ROUTE NO.	SECTION	COUNTY	TOTAL SHEETS	SHEET NO.	SHEET NO. 2
FAP 330		COOK	14	8	6 SHEETS
FED. ROAD DIST. NO. 7	ILLINOIS	FED. AID PROJECT			

Contract Number:



PARAPET JOINT DETAILS

Notes:

Existing Bridge rail sections in Span 2 shall be removed, stored and re-used. For details see sheet 5 of 6. Cost included with Removing and Re-erecting Existing Railing.

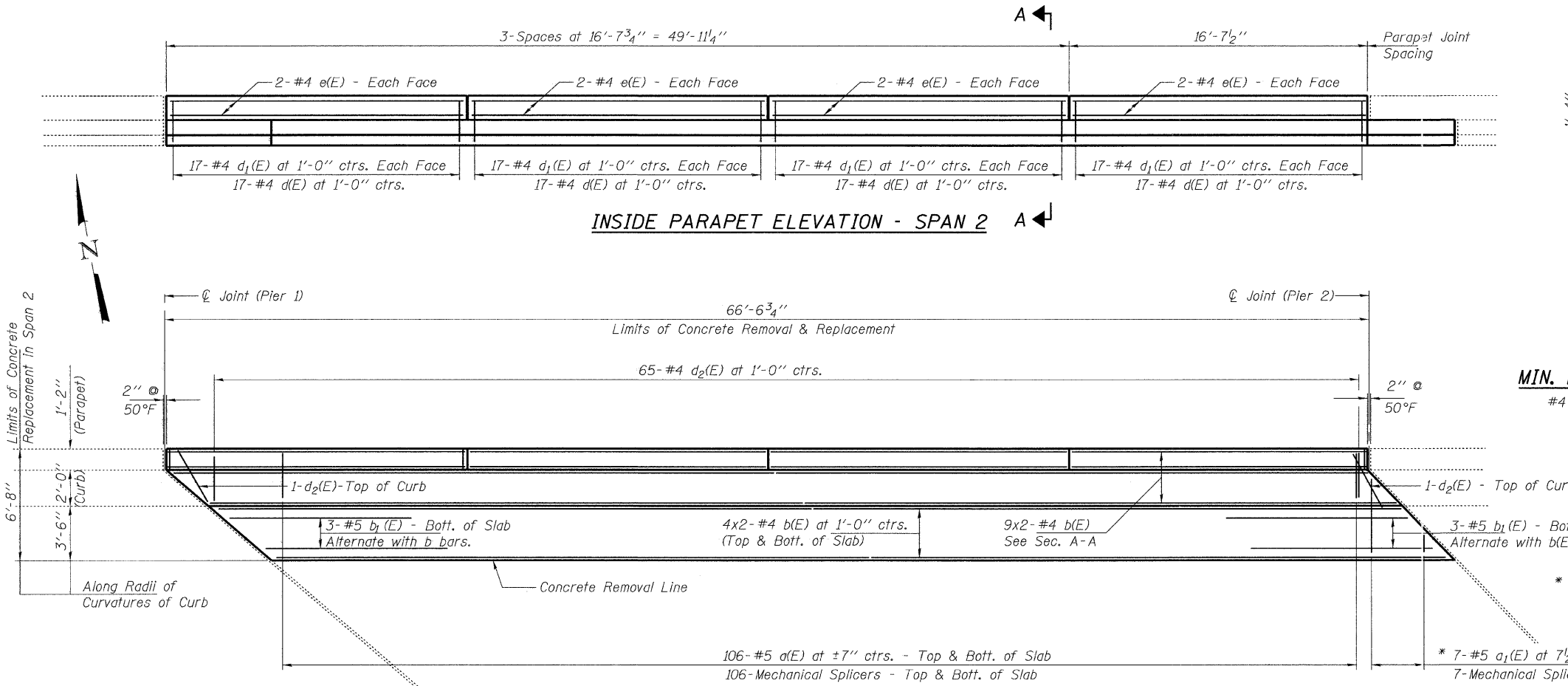
Hatched areas indicate concrete sections to be removed and replaced. Perimeters of concrete removal areas shall be saw cut 3/4" prior to the removal of concrete.

Existing Neoprene Expansion Joint shall be removed, stored, and replaced at both Piers as required for concrete removal and replacement, care shall be taken not to damage the material during all phases of construction. Cost included with Concrete Superstructure. See Detail A.

Bars indicated thus 4 x 2-#5 etc. indicates 4 line of bars with 2 lengths per line.

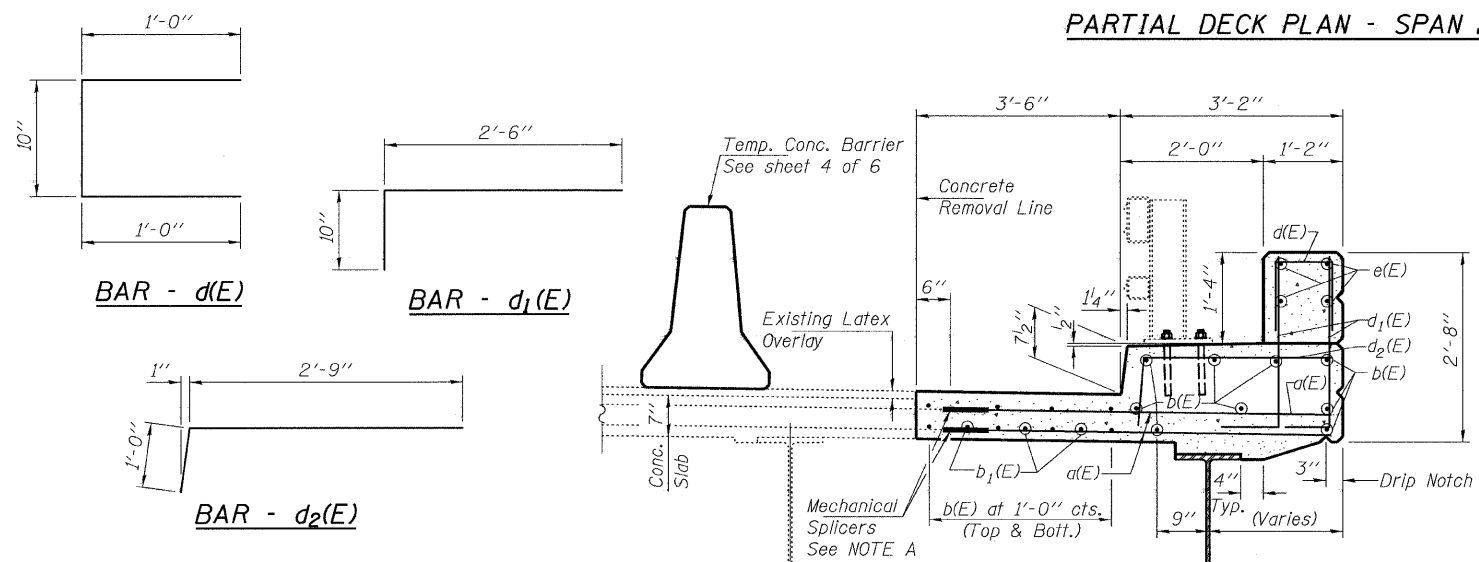
MIN. BAR LAP

#4 = 1'-8"



INSIDE PARAPET ELEVATION - SPAN 2

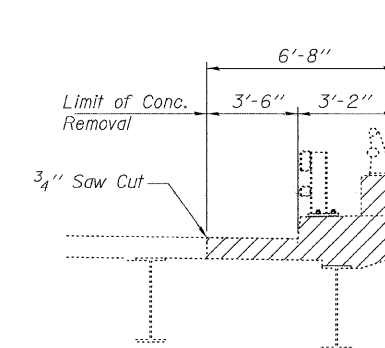
PARTIAL DECK PLAN - SPAN 2



NOTE A:

Attach existing reinforcement with mechanical splicers. Existing reinforcement to extend 6" (min.) into the removal area to allow attachment of the mechanical splicers.

SECTION A-A



PARTIAL CROSS SECTION

For Concrete Removal (Looking West)

Existing Metal Handrail shall be removed. Cost included with Concrete Removal.

BILL OF MATERIAL

Bar	No.	Size	Length	Shape
a(E)	212	#5	6'-2"	—
a ₁ (E)	14	#5	5'-2"	—
b(E)	34	#4	34'-0"	—
b ₁ (E)	6	#5	10'-0"	—
d(E)	68	#4	2'-10"	┌
d ₁ (E)	136	#4	3'-4"	┌
d ₂ (E)	67	#4	3'-9"	┌
e(E)	16	#4	16'-4"	—
Concrete Removal			Cu. Yd.	22.8
Concrete Superstructure			Cu. Yd.	22.8
Reinforcement Bars, Epoxy Coated			Pound	3050

REPAIR DETAILS
FAP 330 (E.B. 79th St.)
COOK COUNTY
SN 016-0518

DESIGNED	AJB
CHECKED	VHV
DRAWN	Steffen
CHECKED	AJB VHV

JANUARY 28, 2008
EXAMINED *Carl Perry*
ENGINEER OF STRUCTURAL SERVICES
PASSED *Ralph E. Anderson*
ENGINEER OF BRIDGES AND STRUCTURES