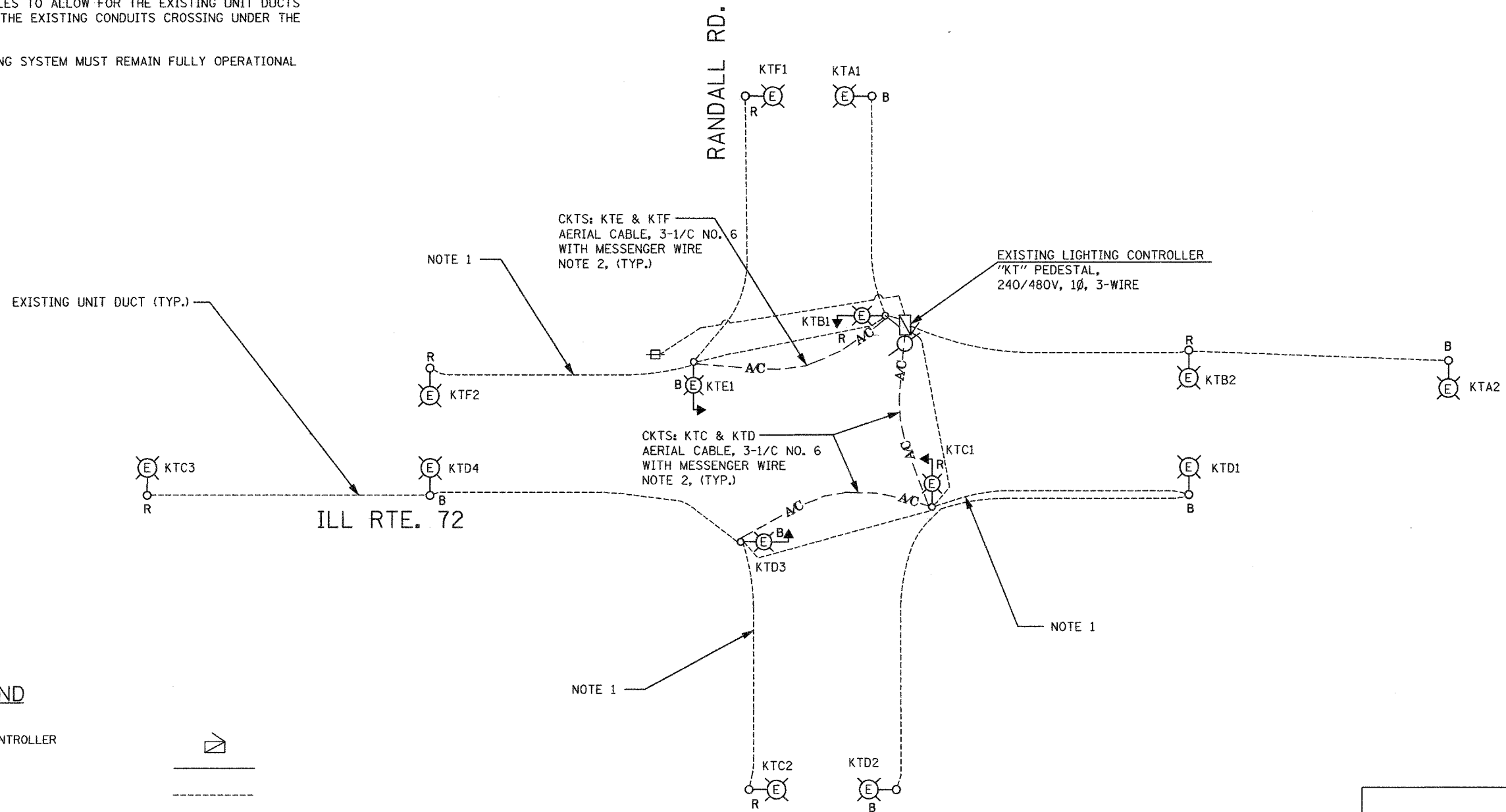




**NOTES:**

1. USE EXISTING CABLE AND UNIT DUCT AND REROUTE THEM TO THE NEW LOCATION OF THE COMBINATION POLE
2. CONTRACTOR SHALL INSTALL NEW AERIAL CABLES AS SHOWN. THESE AERIAL CABLES SHALL BE USED TO FEED THE EXISTING LIGHTING ON THE COMBINATION POLES TO ALLOW FOR THE EXISTING UNIT DUCTS TO BE PULLED FROM THE EXISTING CONDUITS CROSSING UNDER THE PAVEMENT.
3. THE EXISTING LIGHTING SYSTEM MUST REMAIN FULLY OPERATIONAL AT ALL TIMES.



**LEGEND**

- EXISTING LIGHTING CONTROLLER
- PROPOSED UNIT DUCT
- EXISTING UNIT DUCT
- PROPOSED AERIAL CABLE
- EXISTING SERVICE INSTALLATION
- PROPOSED LIGHTING UNIT
- PROPOSED COMBINATION LIGHTING UNIT
- EXISTING COMBINATION LIGHTING UNIT
- EXISTING LIGHTING UNIT
- PROPOSED ELECTRIC GROUND ROD
- TEMPORARY LIGHTING WOOD POLE

LOAD TABLE EXISTING LIGHTING CONTROLLER "KT"					
CIRCUIT	BLACK PHASE		CIRCUIT	RED PHASE	
	AMPS	WATTS		AMPS	WATTS
A	4.2	1008	B	4.2	1008
D	8.4	2016	C	6.3	1512
E	2.1	504	F	4.2	1008
TOTAL	14.7	3528	TOTAL	14.7	3528

TOTAL LOAD ON CONTROLLER: 29.4 AMP

FILE NAME =	USER NAME = M ELSHOLI (GANDHI)	DESIGNED - RDP	REVISED -
...\\04_Randall_road_ill.72.Temp WIRING.dgn		DRAWN - MAA/RDP	REVISED -
		CHECKED - PKG	REVISED -
		DATE - 12/06/2007	REVISED -

STATE OF ILLINOIS  
DEPARTMENT OF TRANSPORTATION

SINGLE LINE DIAGRAM, TEMPORARY WIRING  
LIGHTING CONTROLLER "KT"  
ILLINOIS ROUTE 72 AT RANDALL ROAD

SCALE: NONE SHEET NO. OF SHEETS STA. TO STA.

F.A. RTE.	SECTION	COUNTY	TOTAL SHEETS	SHEET NO.
341	2007-059 L	KANE	21	14
FED. ROAD DIST. NO. 1 ILLINOIS FED. AID PROJECT				

CONTRACT NO. 60098