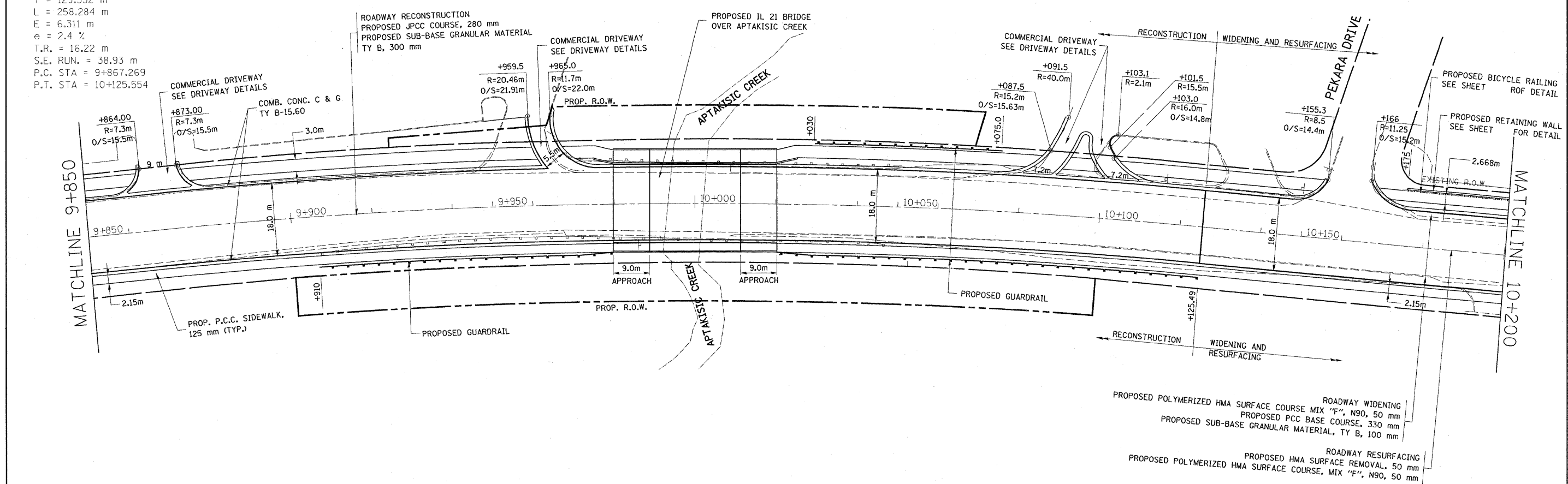


REF-
REF-
REF-

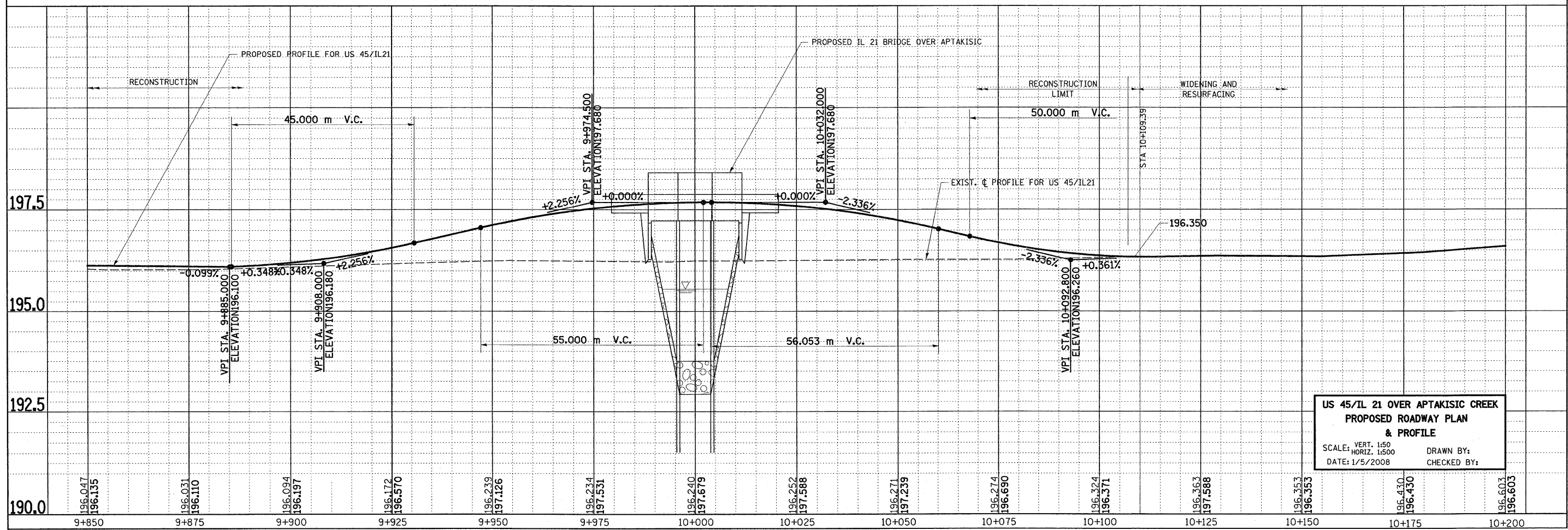
F.A.P. RTE.	SECTION	COUNTY	TOTAL SHEETS	SHEET NO.
330	1Y-B-R-1	LAKE	121	17
STA.		TO STA.		
FED. ROAD DIST. NO. 1		ILLINOIS FED. AID PROJECT		

PROPOSED, CURVE E.US45-1
 PI STA = 9+996.821
 $\Delta = 11^\circ 09' 22''$ (RT)
 R = 1,326.492 m
 T = 129.552 m
 L = 258.284 m
 E = 6.311 m
 e = 2.4 %
 T.R. = 16.22 m
 S.E. RUN. = 38.93 m
 P.C. STA = 9+867.269
 P.T. STA = 10+125.554



ROADWAY WIDENING
 PROPOSED POLYMERIZED HMA SURFACE COURSE MIX "F", N90, 50 mm
 PROPOSED PCC BASE COURSE, 330 mm
 PROPOSED SUB-BASE GRANULAR MATERIAL, TY B, 100 mm

ROADWAY RESURFACING
 PROPOSED HMA SURFACE REMOVAL, 50 mm
 PROPOSED POLYMERIZED HMA SURFACE COURSE, MIX "F", N90, 50 mm



**US 45/IL 21 OVER APTAKISIC CREEK
 PROPOSED ROADWAY PLAN
 & PROFILE**
 SCALE: VERT. 1:50
 HORIZ. 1:500
 DATE: 1/5/2008
 DRAWN BY:
 CHECKED BY: