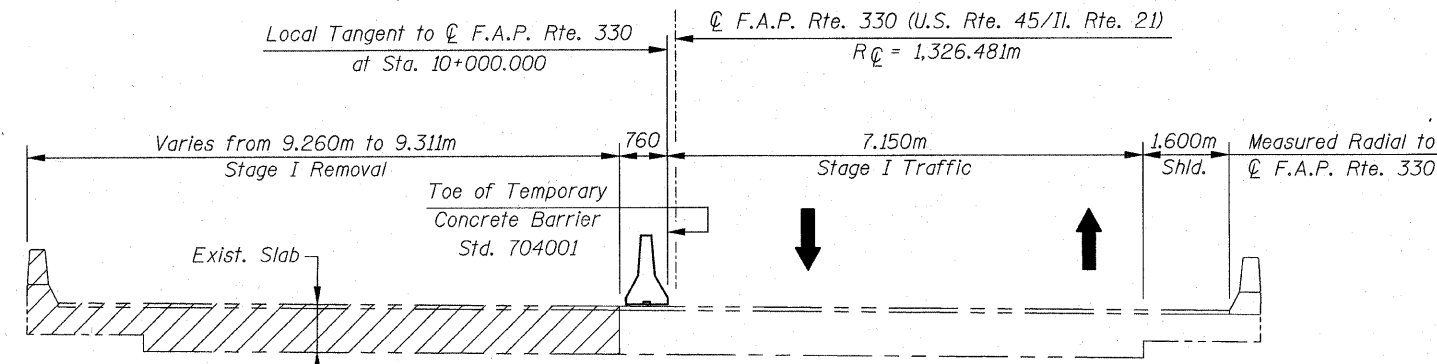
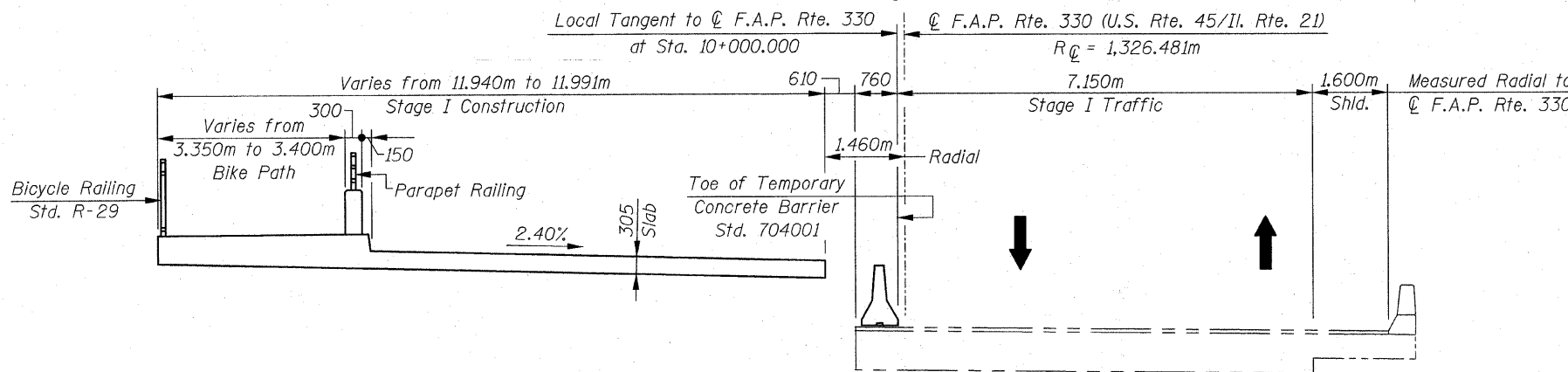


F.A.P. RTE.	SECTION	COUNTY	TOTAL SHEETS	SHEET NO.
330	1Y-B-R-1	LAKE	12	50
STA.		TO STA.		
FED. ROAD DIST. NO.		ILLINOIS	FED. AID PROJECT	

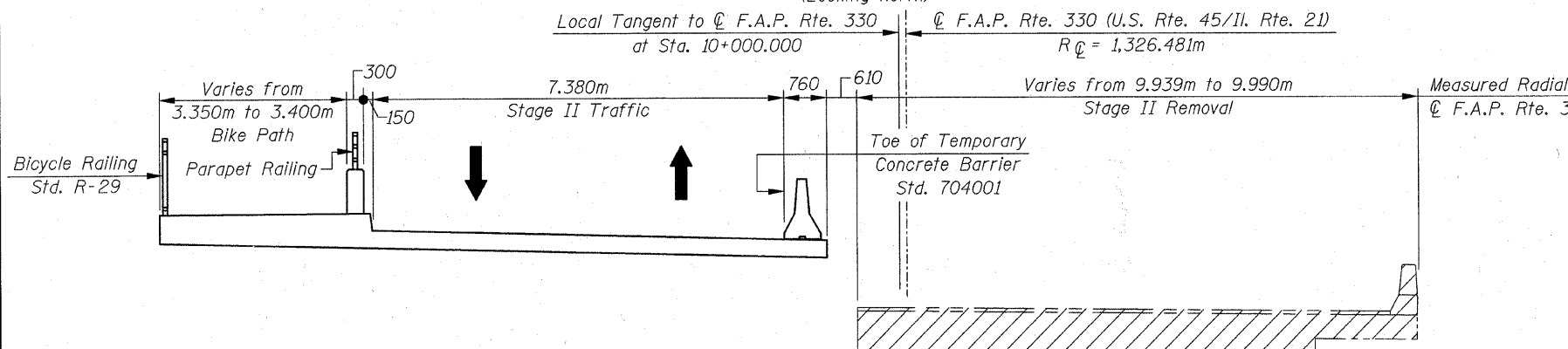
CONTRACT NO. 62032



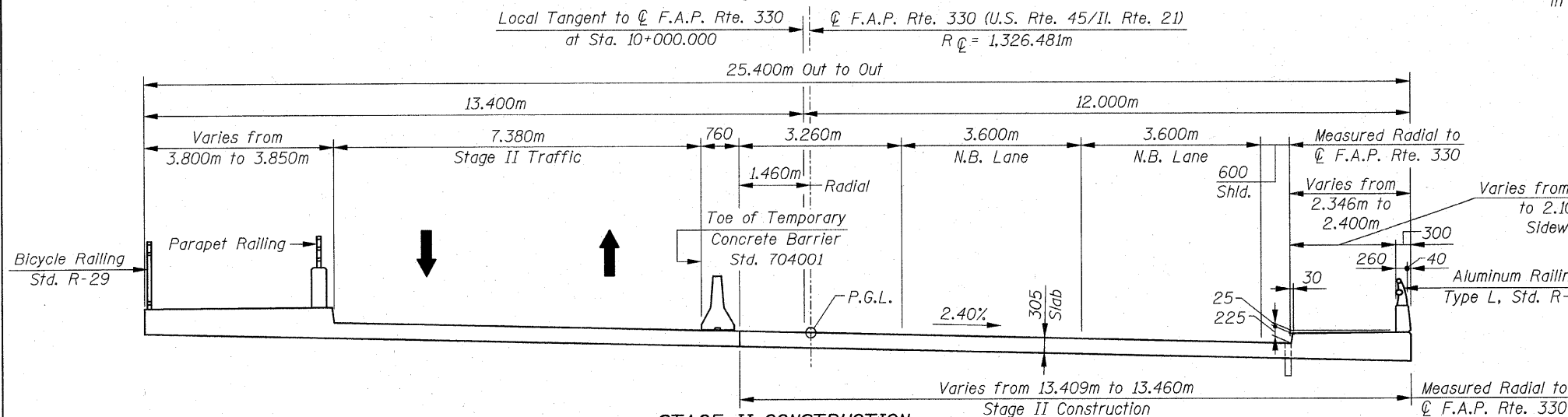
EXISTING DECK CROSS SECTION
(Looking North)



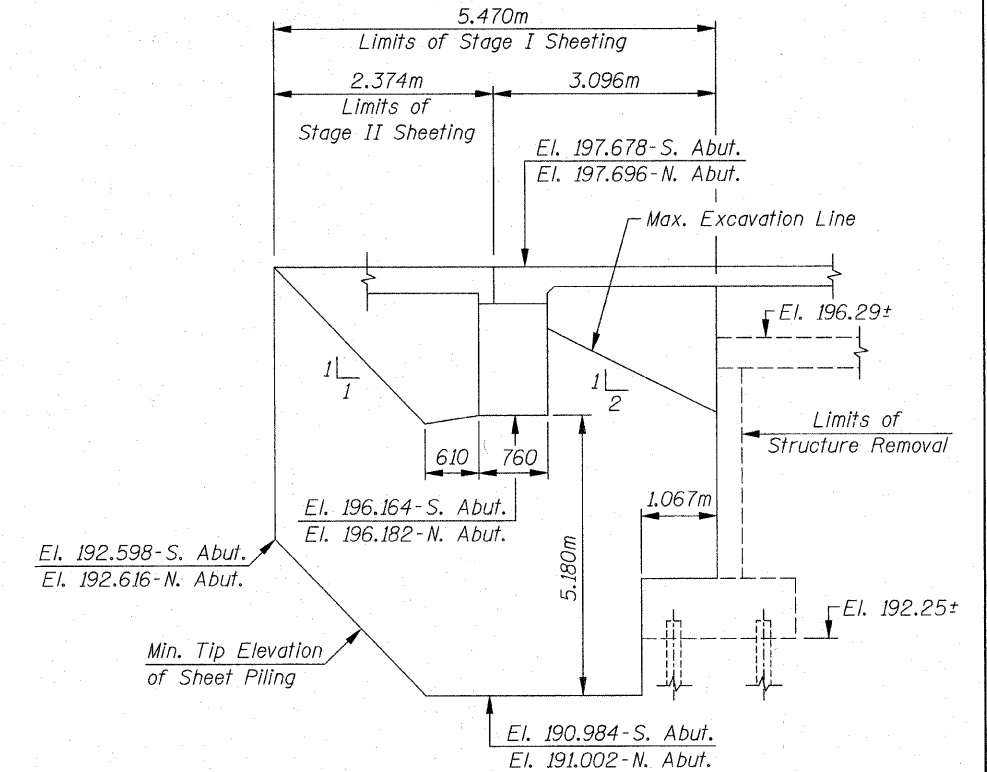
STAGE I CONSTRUCTION
(Looking North)



STAGE II REMOVAL
(Looking North)



STAGE II CONSTRUCTION DECK CROSS SECTION
(Looking North)



Sheet Piling shall be Anchored to the existing Abutment
Minimum Embedment Depth = 5.200m
Minimum Section Modulus of Sheet Piling = 797mm³/mx10³

TEMPORARY SHEET PILING AT ABUTMENTS

NOTES:

If the Contractor chooses to alter the Temporary Cantilevered Sheet Piling Design requirements shown on the Plans, a design submittal including Plan Details and Calculations will be required for review and acceptance by the Engineer.

The Contractor shall connect the first sheet to the existing Abutment Wall to ensure stability of Sheets driven to the top of the existing footing. This connection shall be reviewed and accepted by the Engineer and included in the cost for Temporary Sheet Piling.

REVISIONS	
NAME	DATE

ILLINOIS DEPARTMENT OF TRANSPORTATION

CONSTRUCTION STAGING & TEMPORARY SHEET PILING

U.S. RTE. 45 / IL. RTE. 21 OVER

APTAKISIC CREEK

F.A.P. RTE. 330 SECTION: 1Y-B-R-1

LAKE COUNTY STATION 10+000.000

STRUCTURE NO. 049-0194

SCALE: NONE DRAWN BY: D.L./F.M.

DATE: OCTOBER 16, 2007 CHECKED BY: B.N.S.

CHRISTIAN-ROGE & ASSOC., INC.

CHICAGO ILLINOIS