

F.A.P. RTE. 330	SECTION 1Y-B-R-1	COUNTY LAKE	TOTAL SHEETS 121	SHEET NO. 65
STA. TO STA.		FED. ROAD DIST. NO. ILLINOIS FED. AID PROJECT		

CONTRACT NO. 62032
SUPERSTRUCTURE
BILL OF MATERIAL

Bar	No.	Size	Length (m)	Shape
a(E)	166	#15	6.27	—
a ₁ (E)	104	#15	5.03	—
a ₂ (E)	52	#15	7.50	—
a ₃ (E)	166	#15	7.00	—
a ₄ (E)	52	#15	8.97	—
b(E)	126	#25	6.11	U
b ₁ (E)	130	#25	7.87	U
b ₂ (E)	63	#25	5.77	—
b ₃ (E)	65	#25	9.30	—
b ₄ (E)	172	#25	6.49	—
b ₅ (E)	168	#25	3.13	—
b ₆ (E)	86	#25	7.16	—
b ₇ (E)	69	#15	7.83	—
c(E)	154	#15	0.73	~
c ₁ (E)	77	#15	2.22	—
c ₂ (E)	77	#15	3.67	—
d(E)	77	#15	1.14	L
d ₁ (E)	231	#20	1.14	L
d ₂ (E)	32	#15	0.61	Π
d ₃ (E)	18	#20	0.98	—
d ₄ (E)	18	#15	0.98	—
e(E)	32	#15	3.52	—
e ₁ (E)	22	#15	4.15	—
e ₂ (E)	20	#15	2.36	—
e ₃ (E)	12	#15	4.67	—
s(E)	126	#15	1.32	~
s ₂ (E)	168	#15	1.24	~
Reinforcement Bars, Epoxy Coated			kg	28,990
Concrete Superstructure			Cu. m	213.2
Bar Splicers			Each	135
Protective Coat			Sq. m	636
Floor Drains			Each	2
Bridge Deck Grooving			Sq. m	427

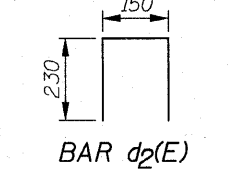
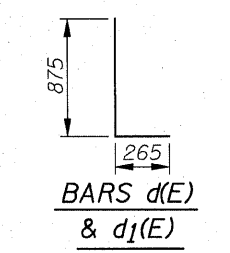
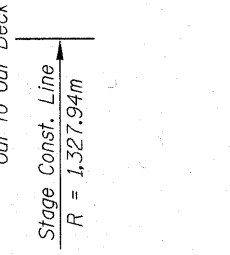
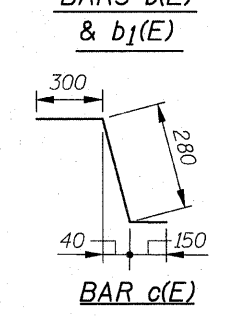
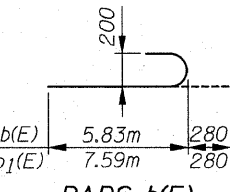
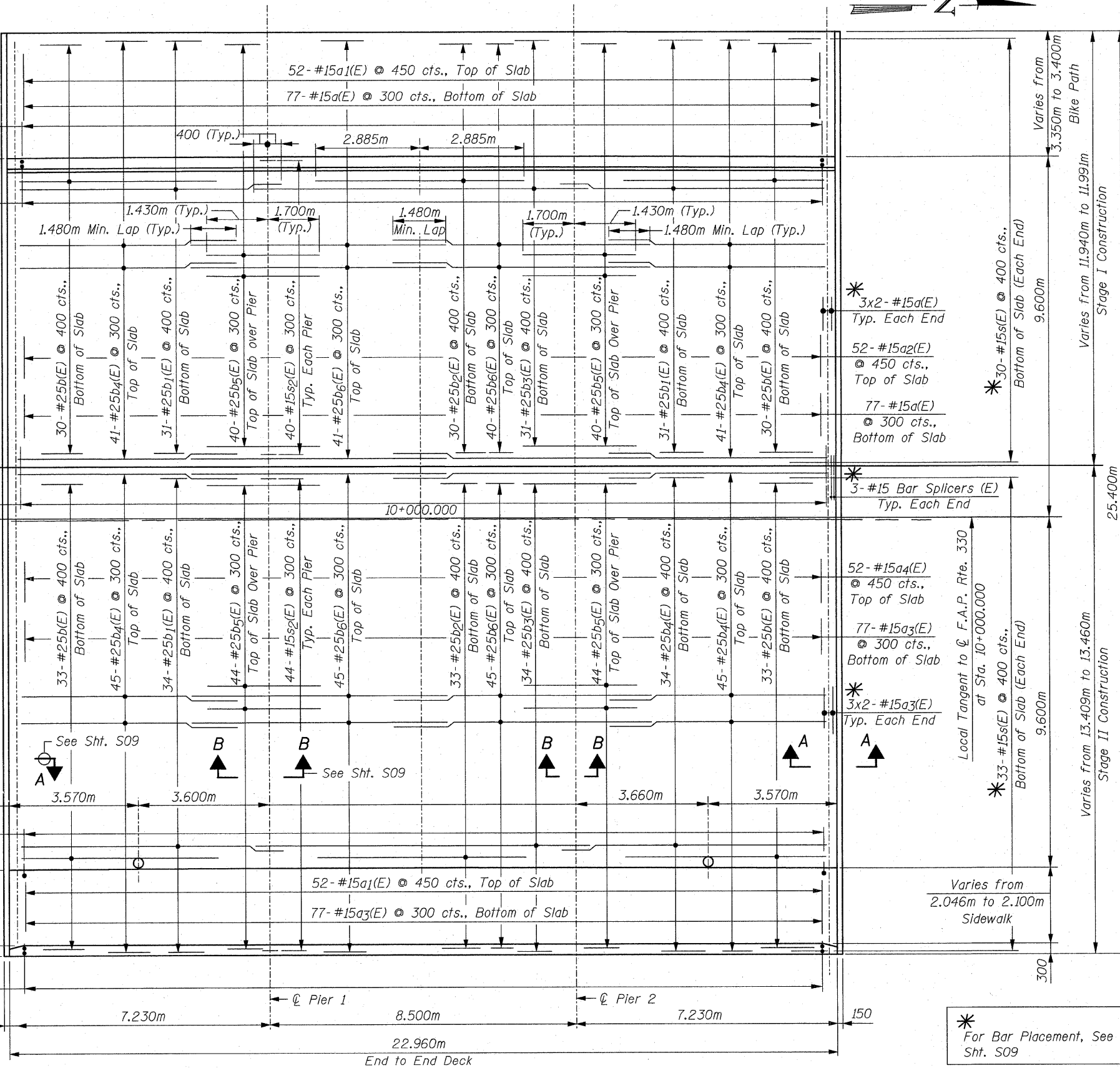
52 #15 Bar Splicers (E)
 @ 450 cts., Top of Slab
 77 #15 Bar Splicers (E)
 @ 300 cts., Bott. of Slab

Varies from 3.800m to 3.850m
 Bike Path
 77-#20d₁(E)
 @ 300 cts., Each Face
 77-#15c(E)
 @ 300 cts.

Varies from 2.346m to 2.400m
 Sidewalk
 77-#20d₁(E)
 @ 300 cts., I.F.
 77-#15d(E)
 @ 300 cts., O.F.

Varies from 3.350m to 3.400m
 Bike Path
 77-#15c(E)
 @ 300 cts.

Varies from 2.046m to 2.100m
 Sidewalk



* For Bar Placement, See Section A-A Sht. S09

MIN. LAP:
 #15 Bars = 640
 #25 Bars = 1.480m

LEGEND:
 I.F. = Inside Face
 O.F. = Outside Face

NOTE:
 For Superstructure Details, see Sht's. S09 & S10

REVISIONS	
NAME	DATE

ILLINOIS DEPARTMENT OF TRANSPORTATION

DECK PLAN
 U.S. RTE. 45 / IL. RTE. 21
 OVER
 APTAKISIC CREEK
 F.A.P. RTE. 330 SECTION: 1Y-B-R-1
 LAKE COUNTY STATION 10+000.000
 STRUCTURE NO. 049-0194

SCALE: NONE
 DATE: OCTOBER 16, 2007
 DRAWN BY: D.L./F.M.
 CHECKED BY: B.N.S.

CHRISTIANO-ROGE & ASSOC., INC.
 CHICAGO ILLINOIS