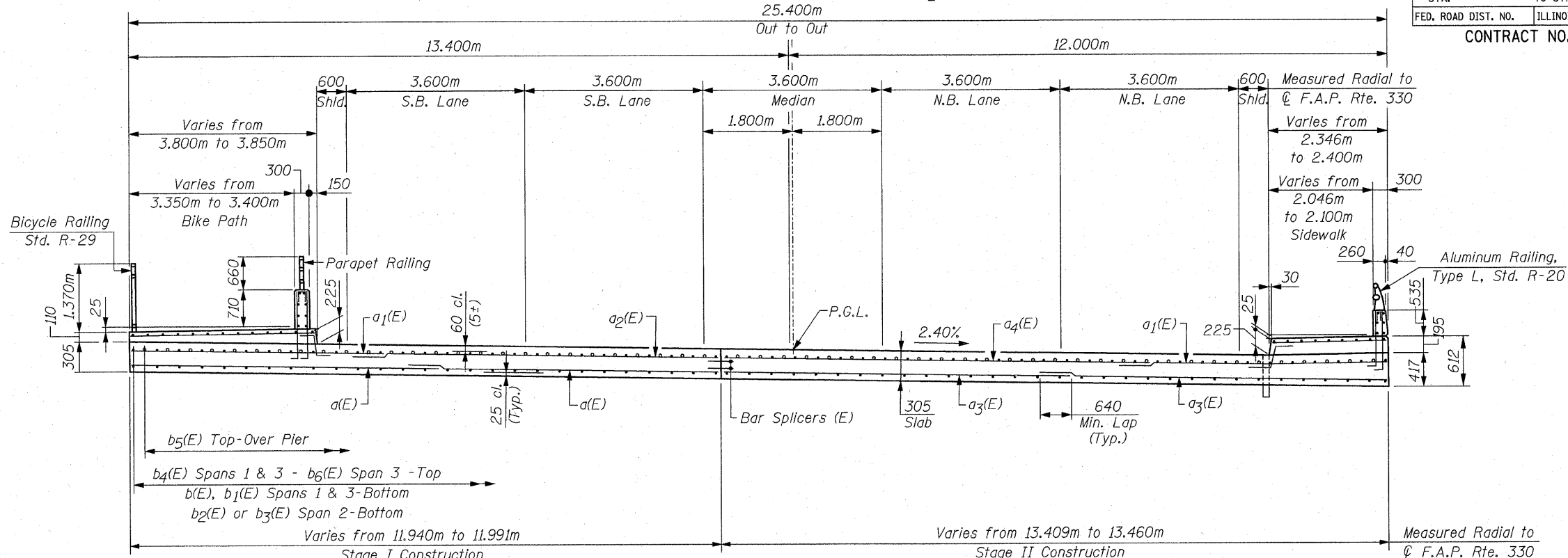


Local Tangent to \odot F.A.P. Rte. 330
 \odot Sta. 10+000.00

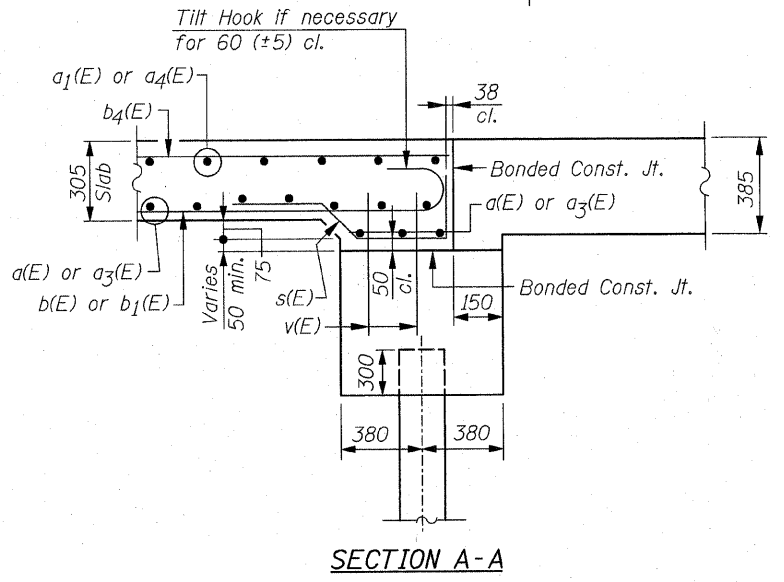
\odot F.A.P. Rte. 330 (U.S. Rte. 45/Il. Rte. 21)
 $R \odot = 1,326.481m$

SHEET S09 OF S26

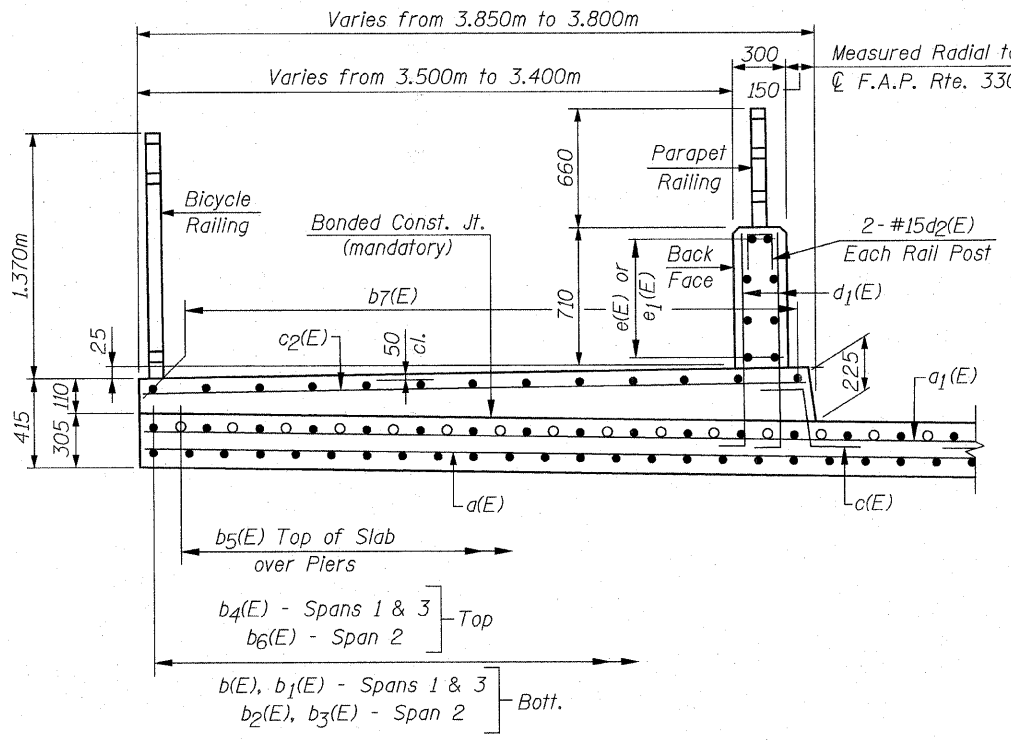
F.A.P. RTE. 330	SECTION 1Y-B-R-1	COUNTY LAKE	TOTAL SHEETS 121	SHEET NO. 56
STA. 330		TO STA. 330		
FED. ROAD DIST. NO.	ILLINOIS	FED. AID PROJECT		
CONTRACT NO. 62032				



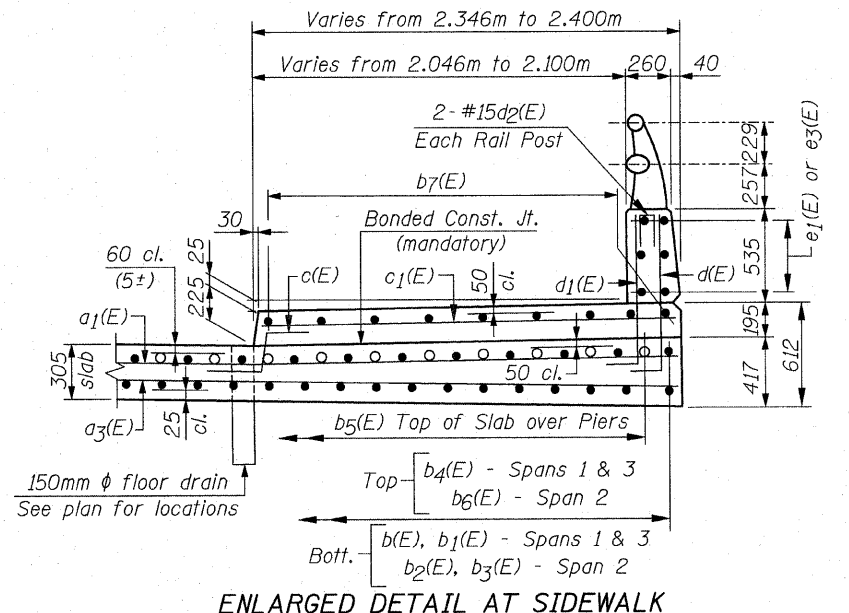
DECK CROSS SECTION
 (Looking North)



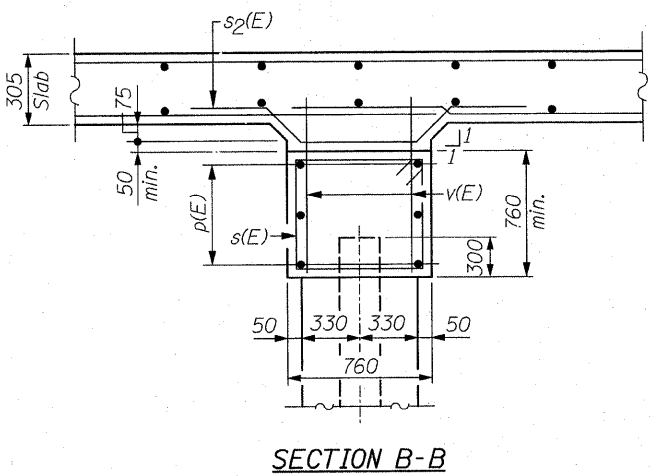
SECTION A-A



ENLARGED DETAIL AT BIKE PATH



ENLARGED DETAIL AT SIDEWALK



SECTION B-B

REVISIONS	
NAME	DATE

ILLINOIS DEPARTMENT OF TRANSPORTATION

DECK CROSS SECTION
 U.S. RTE. 45 / IL. RTE. 21
 OVER
 APTAKISIC CREEK
 F.A.P. RTE. 330 SECTION: 1Y-B-R-1
 LAKE COUNTY STATION 10+000.000
 STRUCTURE NO. 049-0194

SCALE: NONE DRAWN BY: D.L./F.M.
 DATE: OCTOBER 16, 2007 CHECKED BY: B.N.S.

CHRISTIAN-ROGE & ASSOC., INC.
 CHICAGO ILLINOIS