

F.A.P. RTE.	SECTION	COUNTY	TOTAL SHEETS	SHEET NO.
330	1Y-B-R-1	LAKE	121	68
STA.		TO STA.		
FED. ROAD DIST. NO.		ILLINOIS FED. AID PROJECT		
CONTRACT NO. 62032				

Page 1 of 2

**Wang Engineering, INC.**  
Consulting Geotechnical and Environmental Engineers  
wangeng3@wangeng.com  
1145 Main Street  
Lombard, IL 60148  
Telephone: 630 953-9928  
Fax: 630 953-9938

**BORING LOG SB-02**  
WEI Job No.: 950-08-01

Datum: NGVD  
Elevation: 196.03 m  
North: 610293.96 m  
East: 334137.64 m  
Station: 9+986.081  
Offset: 6.192

Client: Christian Roge and Associates, Inc.  
Project: IL21/US45 Over Aptakisic Creek, IDOT # D-91-198-06  
Location: 43N, R11E, Sect. 35 NW 1/4, Lake County, IL

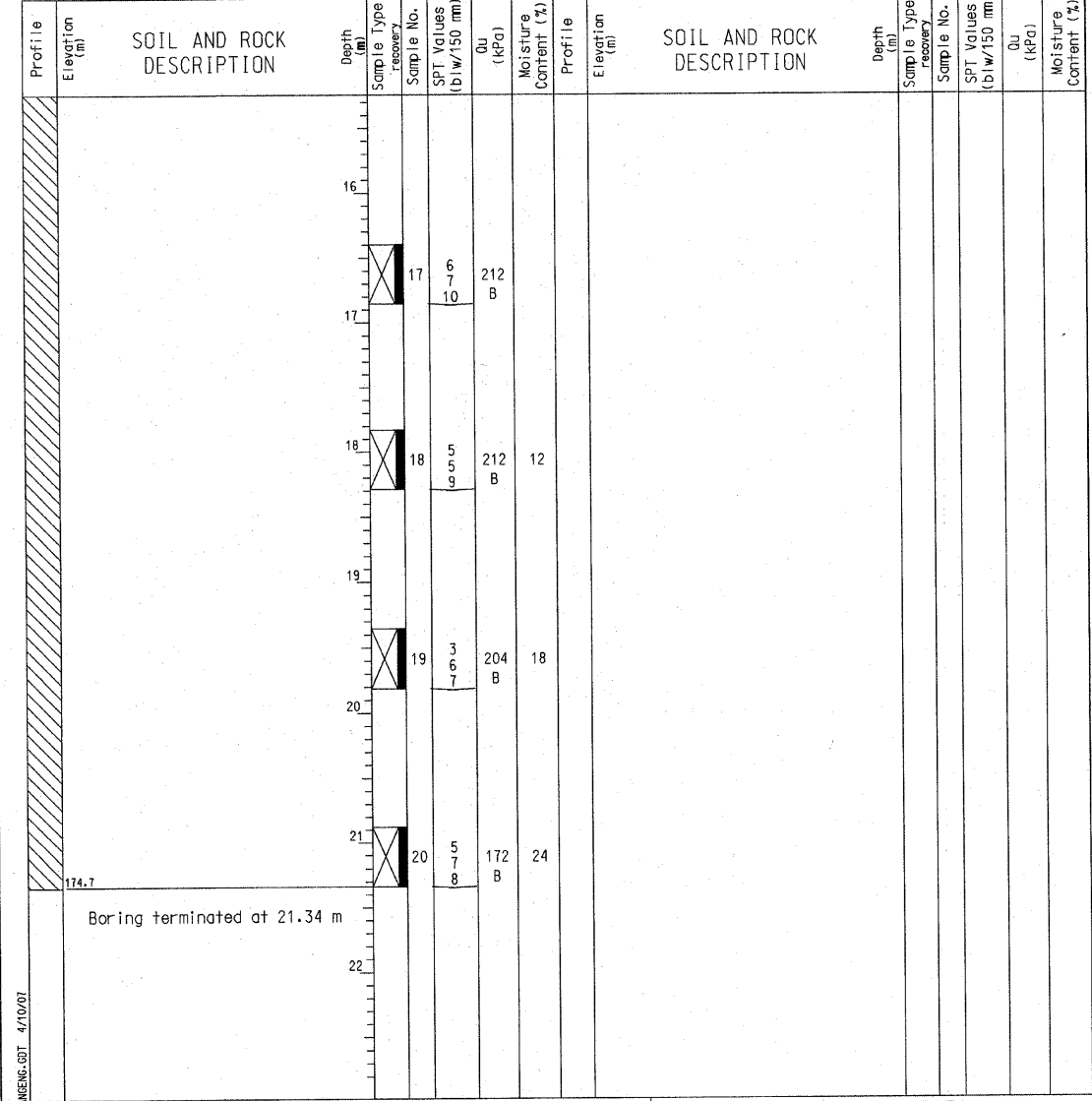
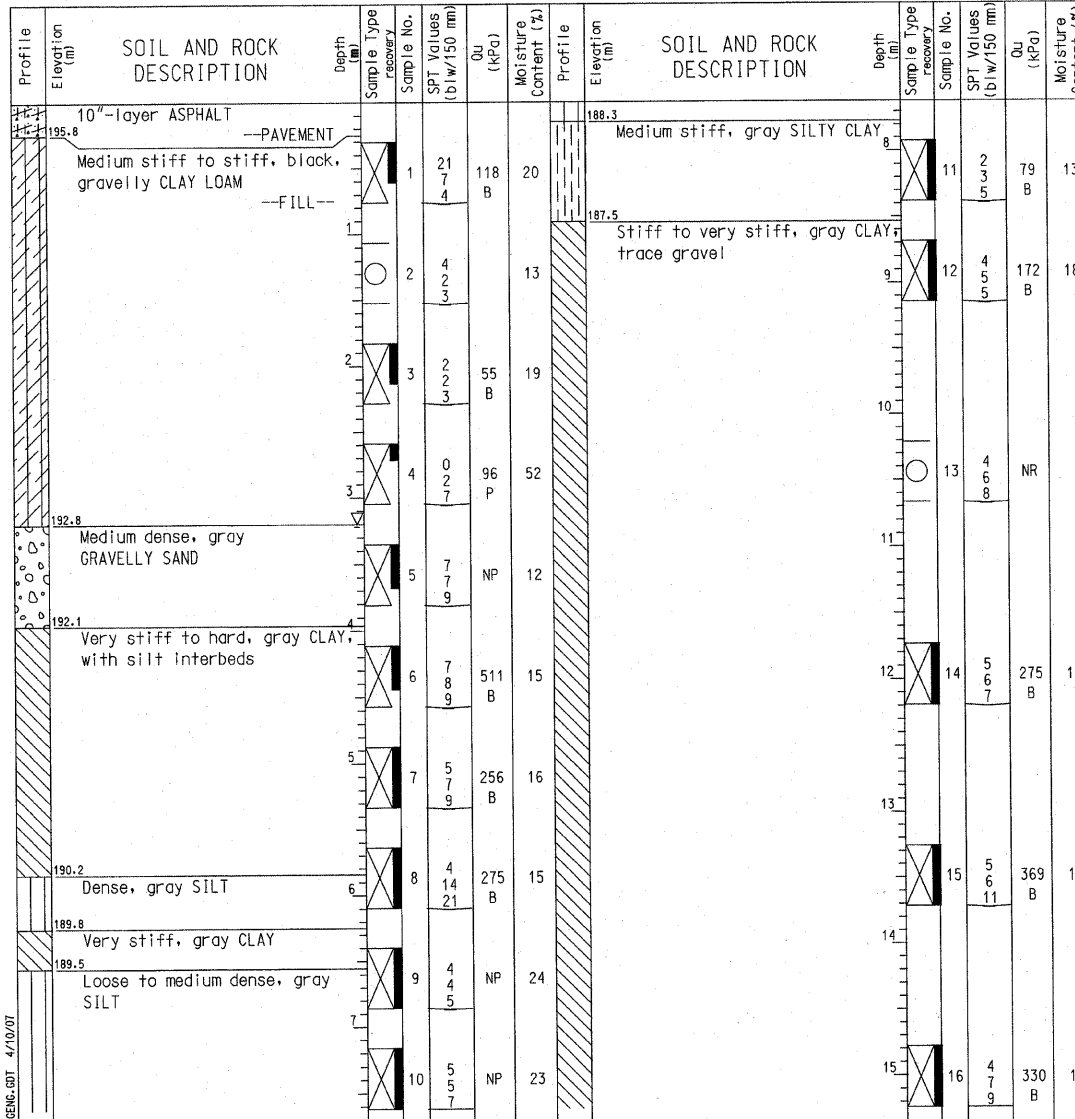
Page 2 of 2

**Wang Engineering, INC.**  
Consulting Geotechnical and Environmental Engineers  
wangeng3@wangeng.com  
1145 Main Street  
Lombard, IL 60148  
Telephone: 630 953-9928  
Fax: 630 953-9938

**BORING LOG SB-02**  
WEI Job No.: 950-08-01

Datum: NGVD  
Elevation: 196.03 m  
North: 610293.96 m  
East: 334137.64 m  
Station: 9+986.081  
Offset: 6.192

Client: Christian Roge and Associates, Inc.  
Project: IL21/US45 Over Aptakisic Creek, IDOT # D-91-198-06  
Location: 43N, R11E, Sect. 35 NW 1/4, Lake County, IL



GENERAL NOTES		WATER LEVEL DATA	
Begin Drilling	03-07-2007	Complete Drilling	03-07-2007
Drilling Contractor	Precon	Drill Rig	ATV
Driller	K&W	Logger	Y. Shiu
Checked by E. Datz		Time After Drilling	NA
Drilling Method 3.25", ID HSA, Boring backfilled with cuttings.		Depth to Water	NA
The stratification lines represent the approximate boundary between soil types; the actual transition may be gradual.			

GENERAL NOTES		WATER LEVEL DATA	
Begin Drilling	03-07-2007	Complete Drilling	03-07-2007
Drilling Contractor	Precon	Drill Rig	ATV
Driller	K&W	Logger	Y. Shiu
Checked by E. Datz		Time After Drilling	NA
Drilling Method 3.25", ID HSA, Boring backfilled with cuttings.		Depth to Water	NA
The stratification lines represent the approximate boundary between soil types; the actual transition may be gradual.			

ILLINOIS DEPARTMENT OF TRANSPORTATION  
SOIL BORING LOGS-II  
U.S. RTE. 45 / IL. RTE. 21  
OVER  
APTAKISIC CREEK  
F.A.P. RTE. 330 SECTION: 1Y-B-R-1  
LAKE COUNTY STATION 10+000.000  
STRUCTURE NO. 049-0194  
SCALE: NONE  
DATE: OCTOBER 16, 2007  
DRAWN BY: D.L./F.M.  
CHECKED BY: B.N.S.  
**CHRISTIAN-ROGE & ASSOC., INC.**  
CHICAGO ILLINOIS

REVISIONS	
NAME	DATE

WANG ENG INC 950801.GPJ WANG ENG.GDT 4/10/07