

F.A.P. RTE.	SECTION	COUNTY	TOTAL SHEETS	SHEET NO.
330	1Y-B-R-1	LAKE	21	73
STA.		TO STA.		
FED. ROAD DIST. NO.		ILLINOIS FED. AID PROJECT		

CONTRACT NO. 62032

Wang Engineering, INC.
 Consulting Geotechnical and Environmental Engineers
 wangeng3@wangeng.com
 1145 Main Street
 Lombard, IL 60148
 Telephone: 630 953-9928
 Fax: 630 953-9938

BORING LOG BB-8

WEI Job No.: 950-08-01

Page 1 of 2

Datum: NGVD
 Elevation: 194.43 m
 North: 610299.82 m
 East: 334139.44 m
 Station: 10+010.5
 Offset: 14.0R

Client: Christian Roge and Associates, Inc.
 Project: IL21/US45 Over Aptakisic Creek, IDOT # D-91-198-06
 Location: T43N, R11E, Sect. 35 NW 1/4, Lake County, IL

Wang Engineering, INC.
 Consulting Geotechnical and Environmental Engineers
 wangeng3@wangeng.com
 1145 Main Street
 Lombard, IL 60148
 Telephone: 630 953-9928
 Fax: 630 953-9938

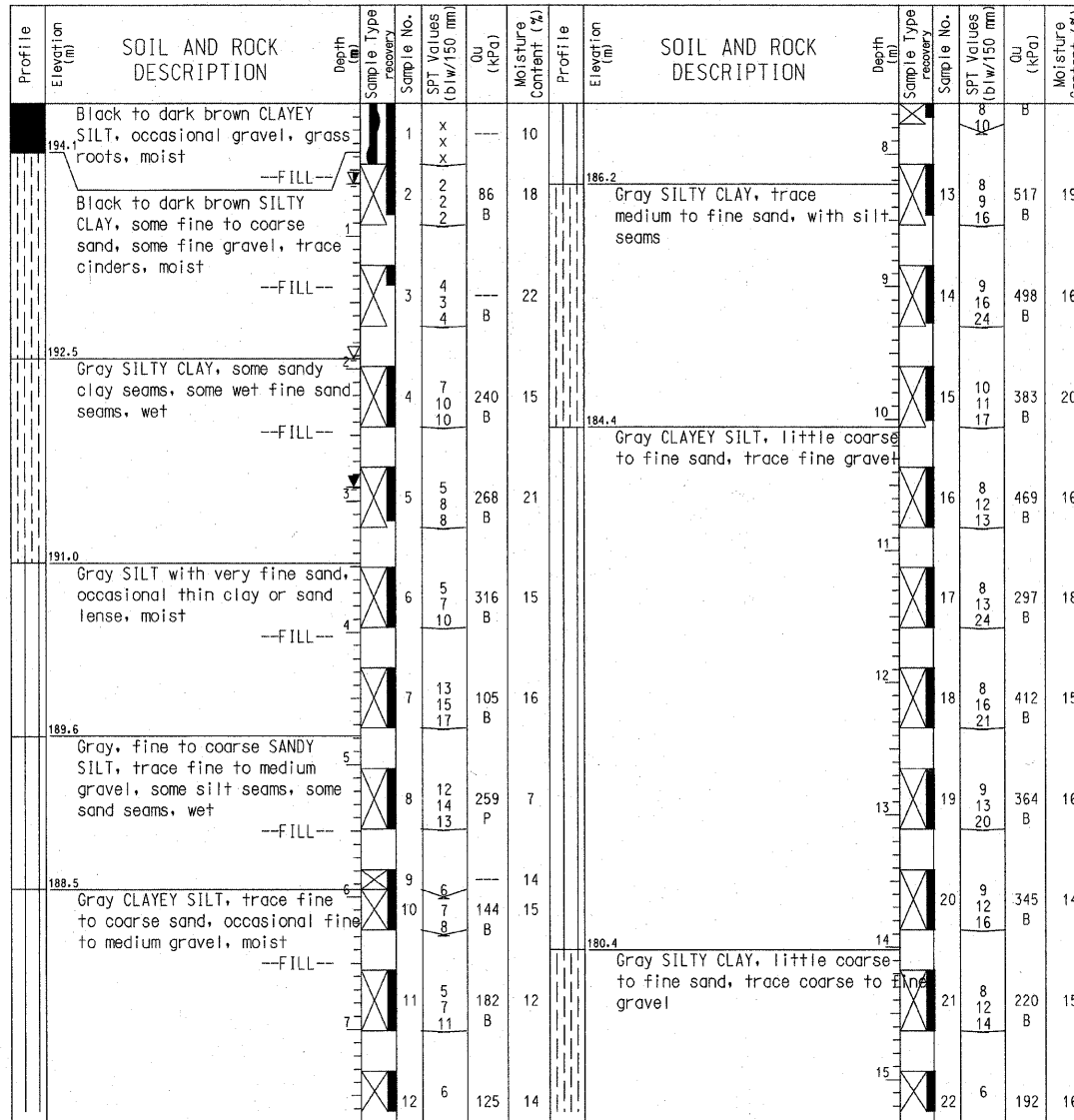
BORING LOG BB-8

WEI Job No.: 950-08-01

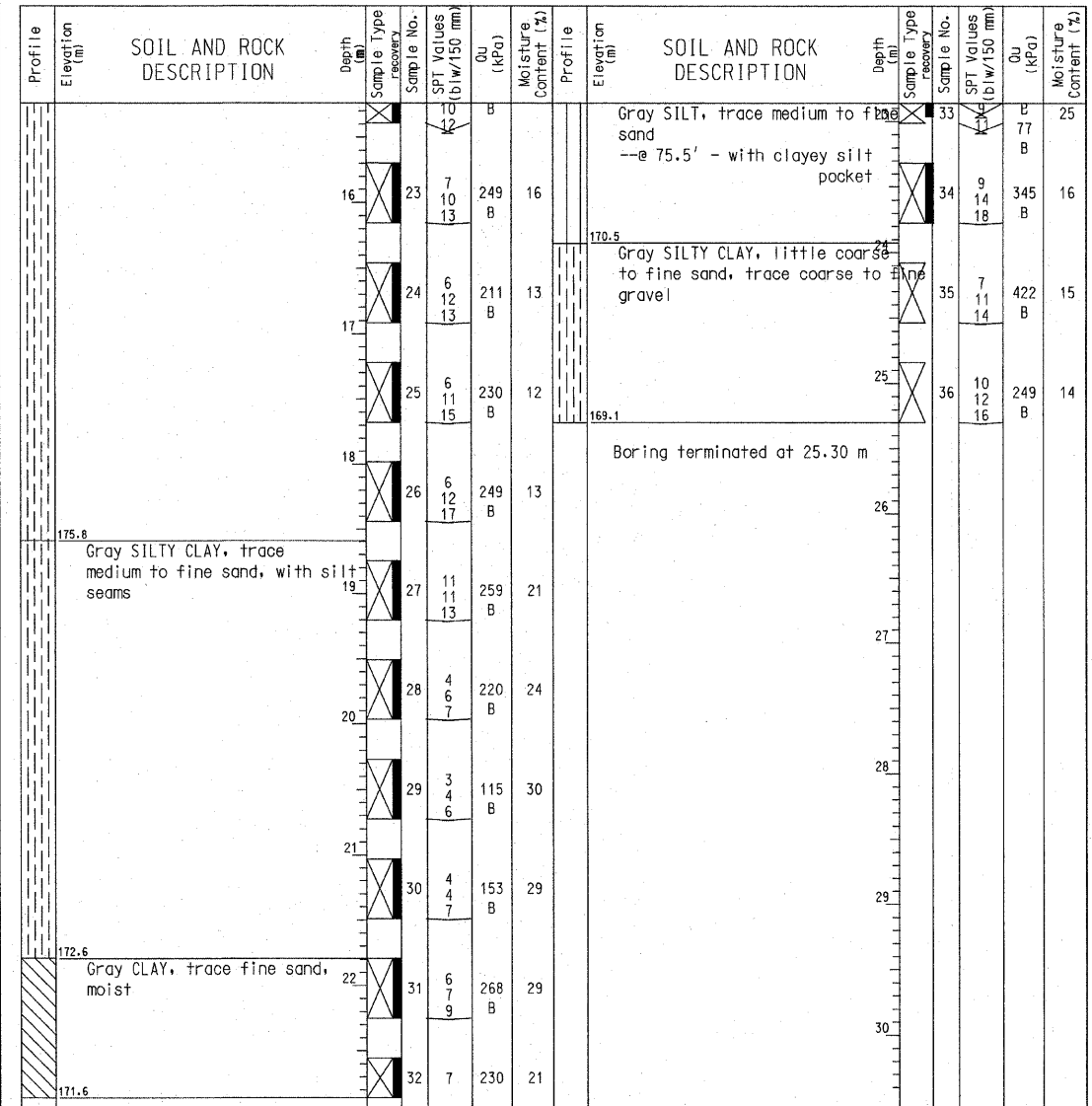
Page 2 of 2

Datum: NGVD
 Elevation: 194.43 m
 North: 610299.82 m
 East: 334139.44 m
 Station: 10+010.5
 Offset: 14.0R

Client: Christian Roge and Associates, Inc.
 Project: IL21/US45 Over Aptakisic Creek, IDOT # D-91-198-06
 Location: T43N, R11E, Sect. 35 NW 1/4, Lake County, IL



GENERAL NOTES		WATER LEVEL DATA	
Begin Drilling	08-15-2001	Complete Drilling	08-15-2001
Drilling Contractor	Contract Drilling Co.	Drill Rig	CME 45
Driller	B. Wolf	Logger	B. Wolf
Checked by	E. Datz	Time After Drilling	144 hours
Drilling Method	6-inch HSA	Depth to Water	0.61 m
The stratification lines represent the approximate boundary between soil types; the actual transition may be gradual.			



GENERAL NOTES		WATER LEVEL DATA	
Begin Drilling	08-15-2001	Complete Drilling	08-15-2001
Drilling Contractor	Contract Drilling Co.	Drill Rig	CME 45
Driller	B. Wolf	Logger	B. Wolf
Checked by	E. Datz	Time After Drilling	144 hours
Drilling Method	6-inch HSA	Depth to Water	0.61 m
The stratification lines represent the approximate boundary between soil types; the actual transition may be gradual.			

ILLINOIS DEPARTMENT OF TRANSPORTATION

SOIL BORING LOGS-VII

U.S. RTE. 45 / IL. RTE. 21
 OVER
 APTAKISIC CREEK
 F.A.P. RTE. 330 SECTION: 1Y-B-R-1
 LAKE COUNTY STATION 10+000.000
 STRUCTURE NO. 049-0194

SCALE: NONE
 DATE: OCTOBER 16, 2007

DRAWN BY: D.L./F.M.
 CHECKED BY: B.N.S.

CHRISTIAN-ROGE & ASSOC., INC.
 CHICAGO ILLINOIS

REVISIONS	
NAME	DATE

I:\Projects\62032\62032-01\Drawings\62032-01-11\62032-01-11-01.dwg 11/27/2007 05:12:29 AM