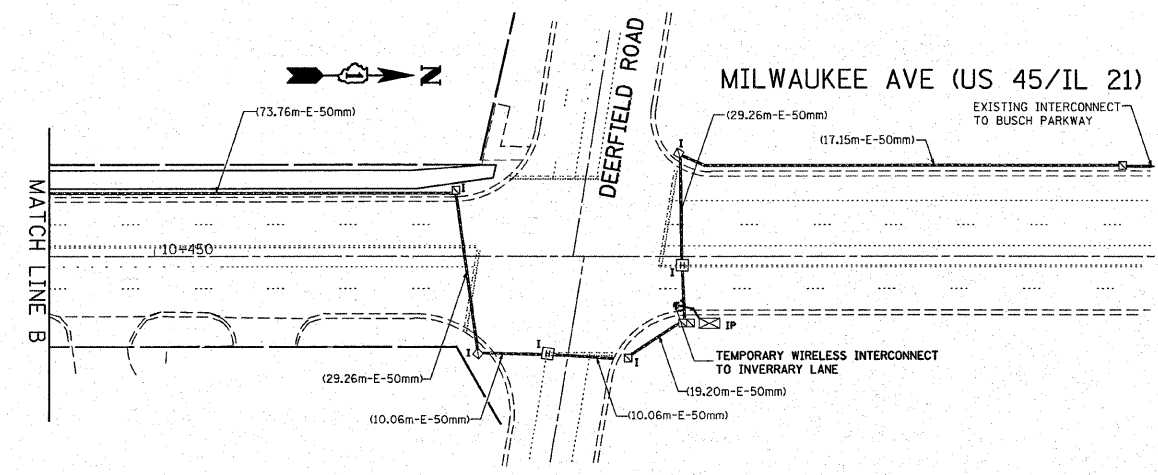
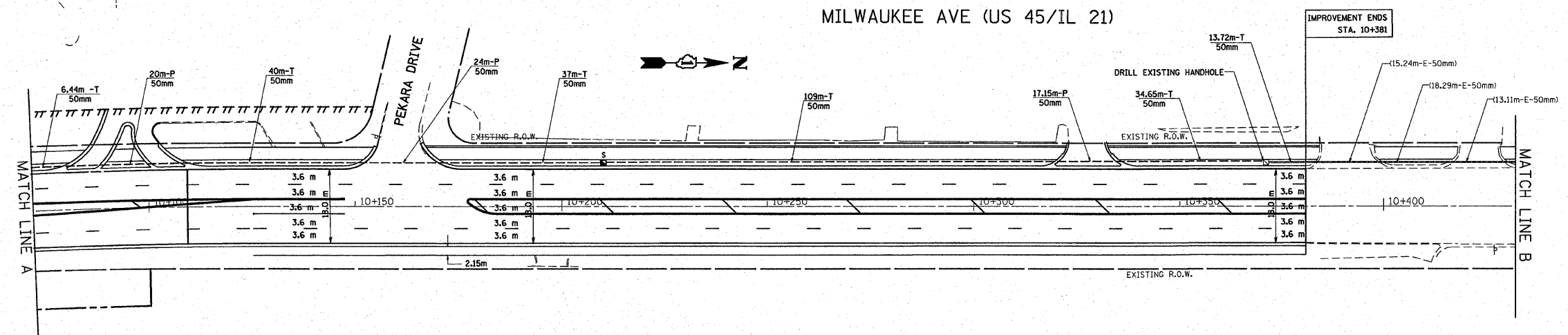
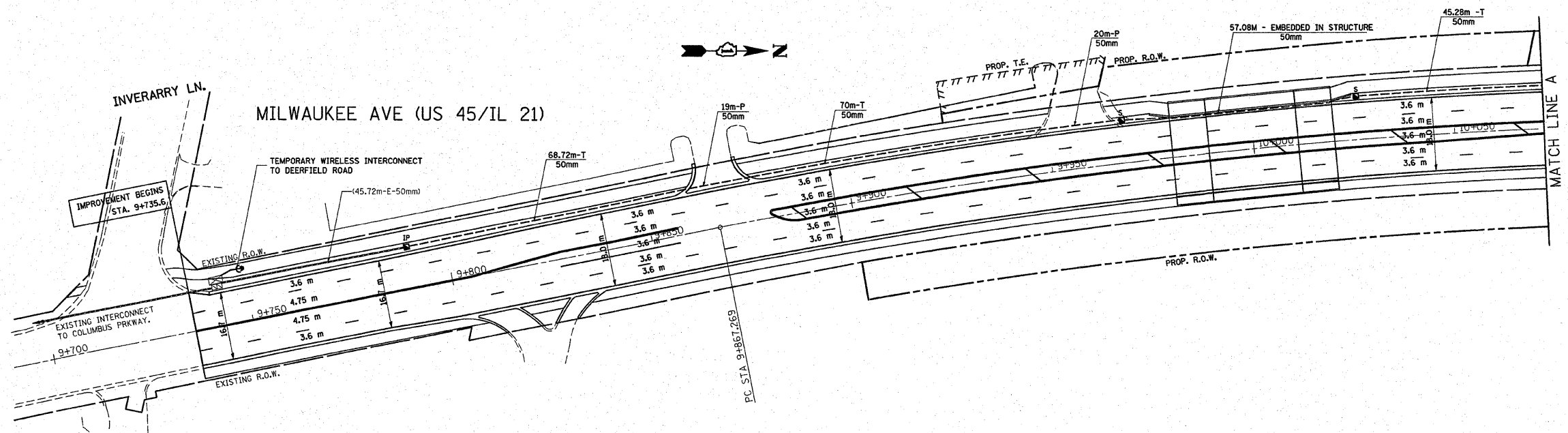


REF-
REF-
REF-

F.A.P. RTE.	SECTION	COUNTY	TOTAL SHEETS	SHEET NO.
330	1Y-B-R-1		LAKE	86
STA.		TO STA.		
FED. ROAD DIST. NO. 1		ILLINOIS	FED. AID PROJECT	
CONTRACT NO. 60232				



INTERCONNECT PLAN LEGEND

	PROPOSED	EXISTING
CONTROLLER CABINET	[Symbol]	[Symbol]
SERVICE INSTALLATION, (P) POLE OR (G) GROUND MOUNT	[Symbol]	[Symbol]
TELEPHONE CONNECTION	[Symbol]	[Symbol]
HANDHOLE	[Symbol]	[Symbol]
HEAVY DUTY HANDHOLE	[Symbol]	[Symbol]
DOUBLE HANDHOLE	[Symbol]	[Symbol]
G.S. CONDUIT IN TRENCH OR PUSHED	[Symbol]	[Symbol]
SYSTEM	S	I
INTERSECTION	IP	
UNIT DUCT	UD	
COMMON TRENCH	CT	
DETECTOR LOOP, TYPE I	[Symbol]	[Symbol]
PERFORMED DETECTOR LOOP	[Symbol]	[Symbol]

REVISIONS	
NAME	DATE

ILLINOIS DEPARTMENT OF TRANSPORTATION
ILLINOIS ROUTE 132
TEMPORARY AND PERMANENT INTERCONNECT PLAN
US RTE. 45/IL. RTE. 21 FROM
INVERRARY LN. TO BUSCH PRKWAY.
SCALE: 1"=50'
DATE 12/27/2007
DRAWN BY: BCK
DESIGNED BY: BCK
CHECKED BY: DAD