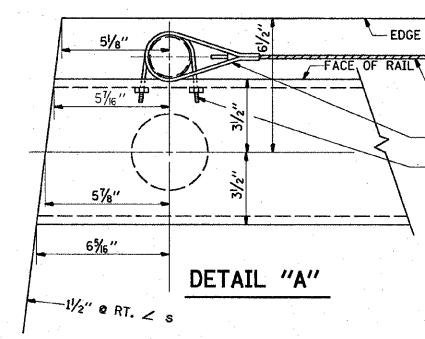
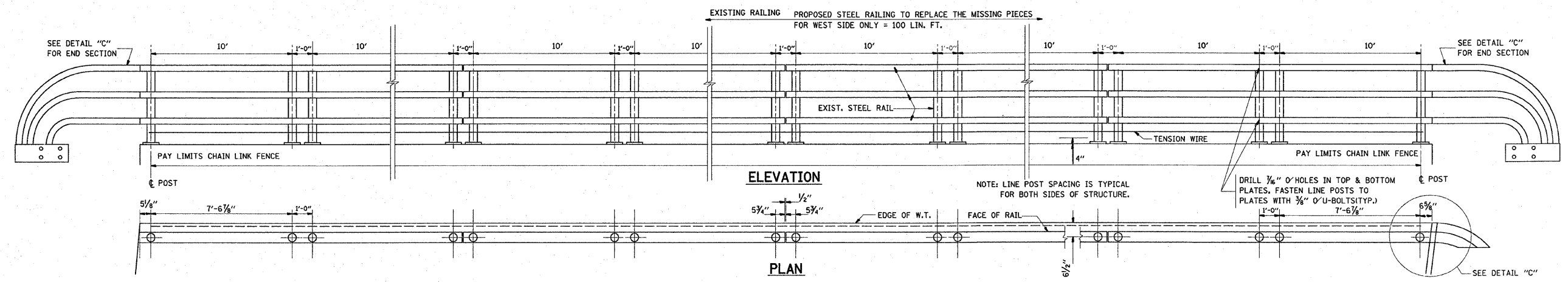
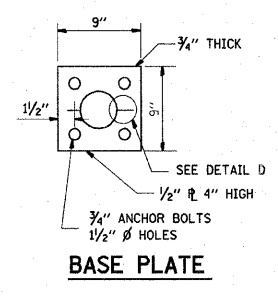
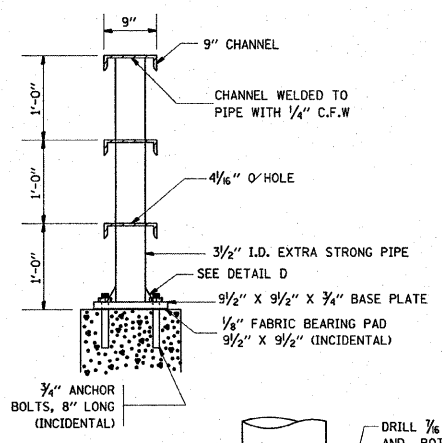
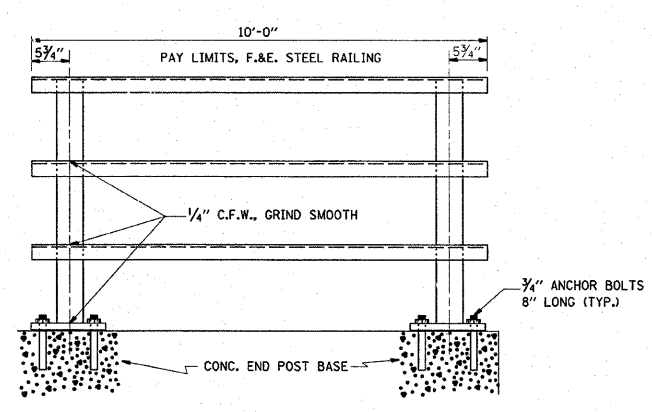
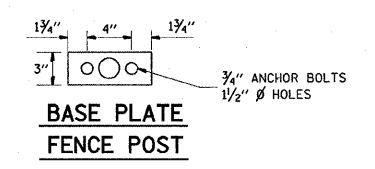
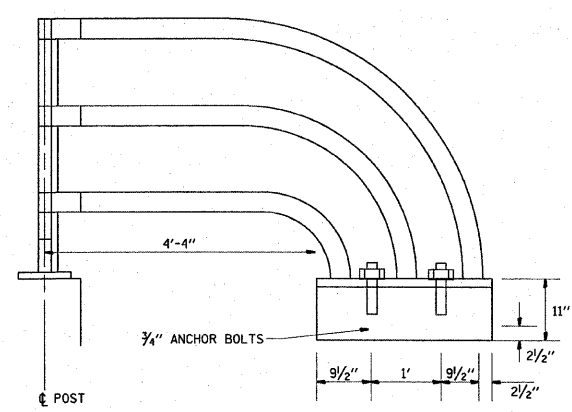
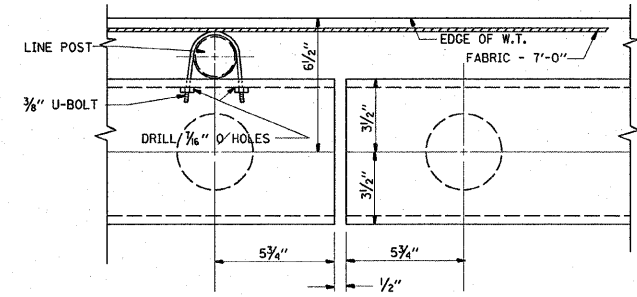


F.A. RTE.	SECTION	COUNTY	TOTAL SHEETS	SHEET NO.
			127	105
STA.		TO STA.		
FED. ROAD DIST. NO.		ILLINOIS FED. AID PROJECT		

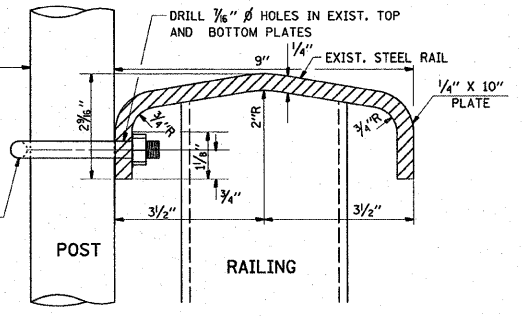
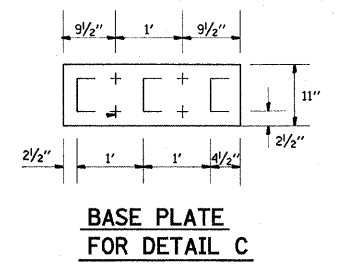
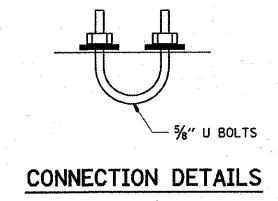
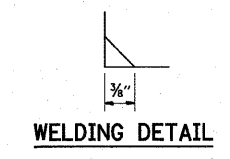
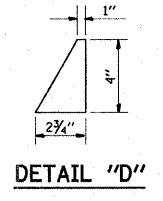
DETAILS: CHAIN LINK FENCE, SPECIAL



NOTE:
AFTER THE CONCRETE END POST IS REMOVED, THE TOP OF THE END POST BASE SHALL BE LEVELED & SMOOTHED WITH A 3:1 SAND-CEMENT MIX. THE TOP OF THE PROPOSED STEEL RAILING SHALL BE THE SAME HEIGHT AS THE EXISTING METAL RAIL.



NOTE:
ENTIRE EXIST. METAL RAIL TO BE CLEANED AND PAINTED (SEE SPECIAL PROVISIONS)



NOTE: SEAL PERIMETER OF PLATE TO CONCRETE WITH TWO COMPONENT NONSTAINING GRAY SEALING COMPOUND WITH POLYSULFIDE LIQUID POLYMERS, GUN GRADE WITH PRIMER. (INCIDENTAL)

REVISIONS		DATE
NAME		
ALEX HOUSEH		10/29/92
RAY RITCHIE		5/2/00

ILLINOIS DEPARTMENT OF TRANSPORTATION

STEEL RAILING

SCALE: NONE

DRAWN: CHER

BY: BI

PLOT DATE = 10/4/2007
FILE NAME = W:\wastco\mbl\dgn
USER NAME = blanch