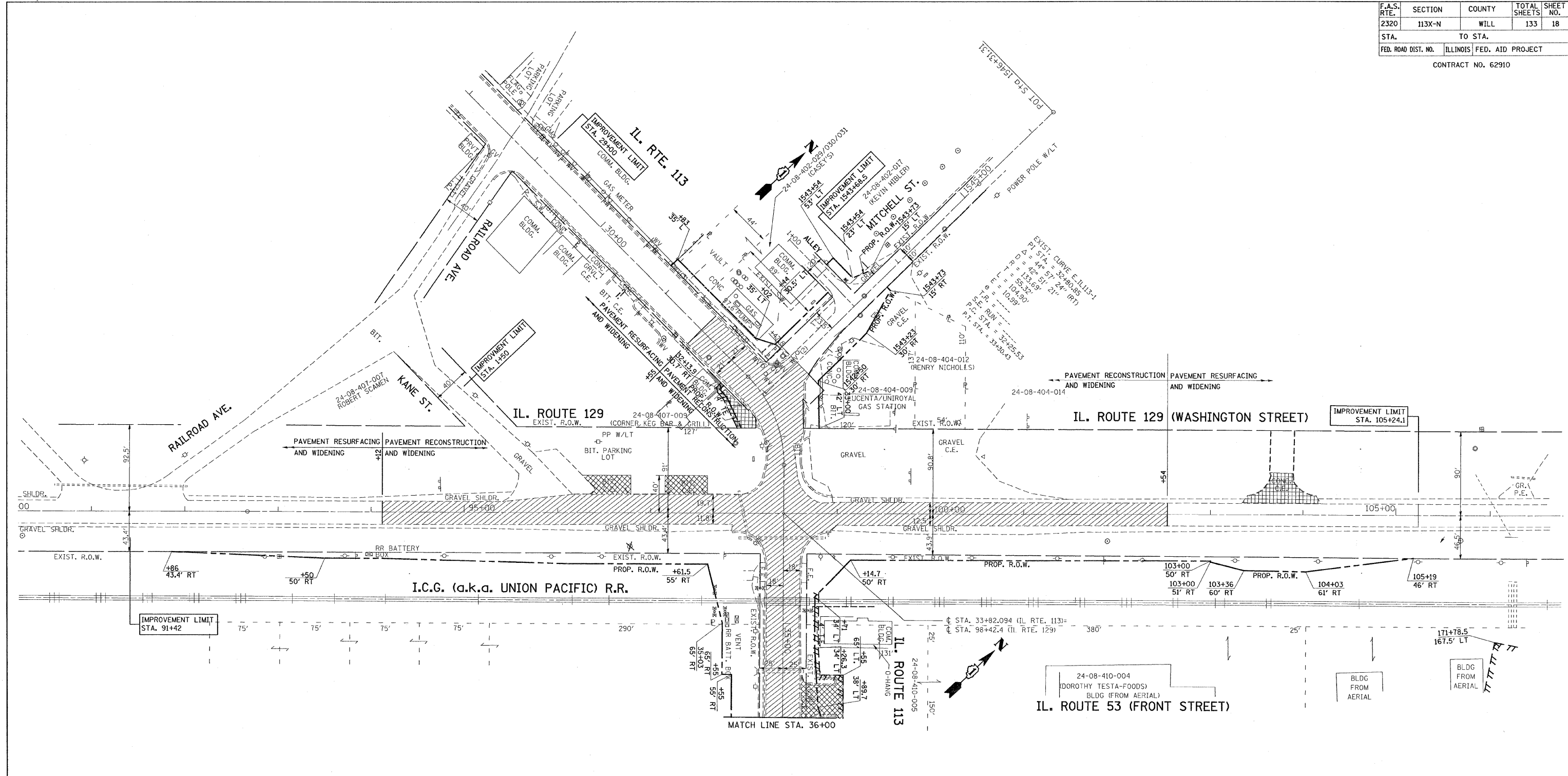
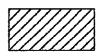


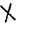



F.A.S. RTE.	SECTION	COUNTY	TOTAL SHEETS	SHEET NO.
2320	113X-N	WILL	133	18
STA.		TO STA.		
FED. ROAD DIST. NO.	ILLINOIS	FED. AID PROJECT		
CONTRACT NO. 62910				



**LEGEND**

-  PAVEMENT REMOVAL
-  DRIVEWAY PAVEMENT REMOVAL (BITUMINOUS)
-  DRIVEWAY PAVEMENT REMOVAL (CONCRETE)
-  TREE REMOVAL
-  TREE TRUNK PROTECTION

REVISIONS	
NAME	DATE

ILLINOIS DEPARTMENT OF TRANSPORTATION  
**EXISTING ROADWAY PLAN**  
 IL. 113 (IL. 129 TO IL. 53)

SCALE: VERT. 1"=50'  
 HORIZ. DATE 9/14/2007  
 DRAWN BY  
 CHECKED BY