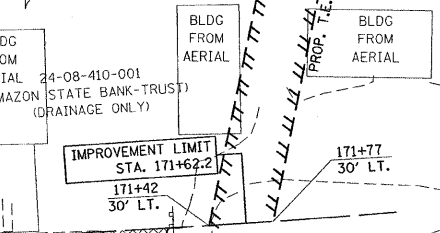
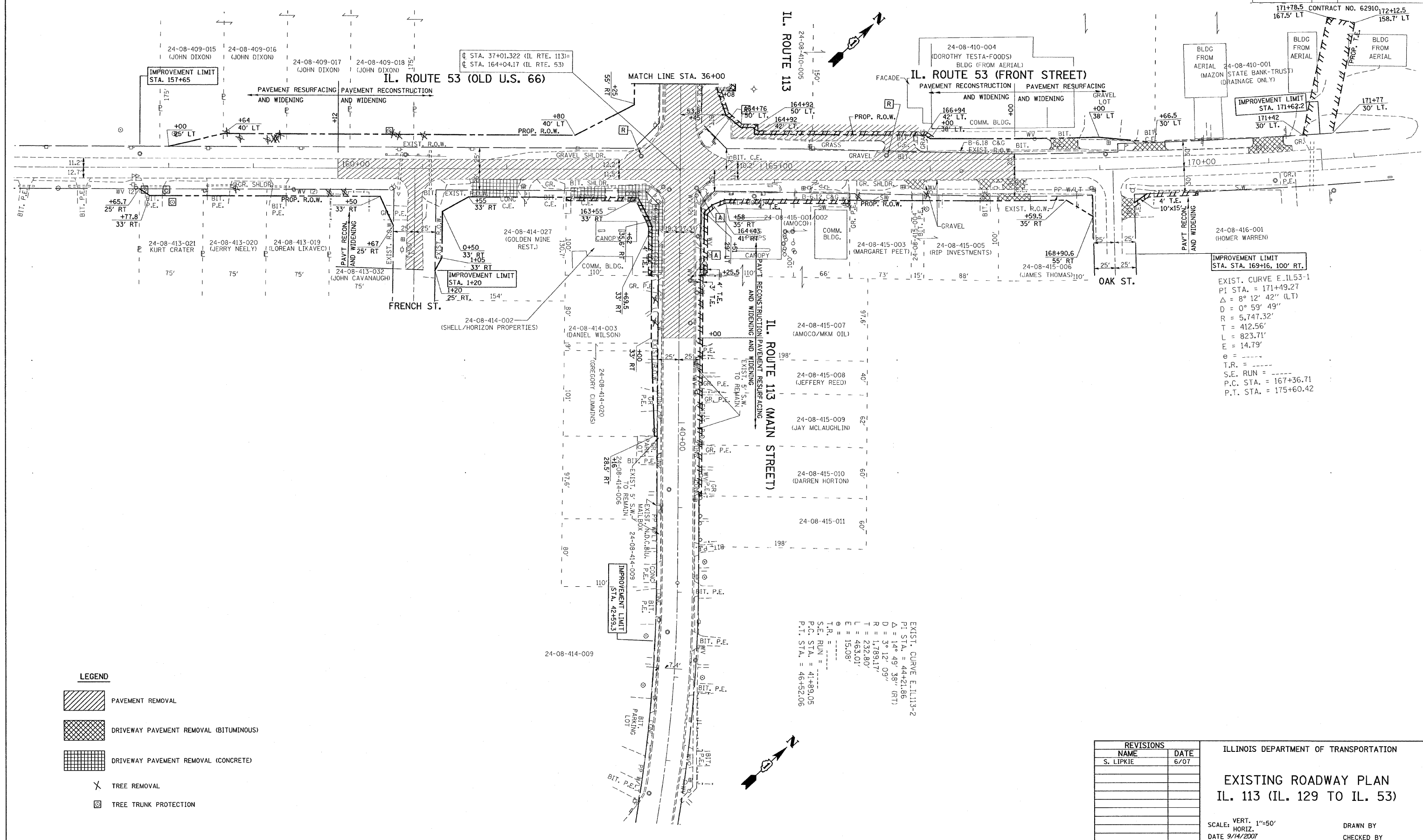


F.A.S. RTE.	SECTION	COUNTY	TOTAL SHEETS	SHEET NO.
2320	113X-N	WILL	133	19
STA.		TO STA.		
FED. ROAD DIST. NO.		ILLINOIS	FED. AID PROJECT	
171+78.5		CONTRACT NO. 62910172+12.5		
167.5' LT		158.7' LT		



EXIST. CURVE E.I.L153-1  
 PI STA. = 171+49.27  
 $\Delta = 8^\circ 12' 42''$  (LT)  
 $D = 0^\circ 59' 49''$   
 $R = 5,747.32'$   
 $T = 412.56'$   
 $L = 823.71'$   
 $E = 14.79'$   
 $\theta = \dots$   
 $T.R. = \dots$   
 $S.E. RUN = \dots$   
 $P.C. STA. = 167+36.71$   
 $P.T. STA. = 175+60.42$

EXIST. CURVE E.I.L113-2  
 PI STA. = 44+21.86  
 $\Delta = 14^\circ 49' 38''$  (RT)  
 $D = 3^\circ 12' 09''$   
 $R = 1,789.17'$   
 $T = 232.80'$   
 $L = 463.01'$   
 $E = 15.08'$   
 $\theta = \dots$   
 $T.R. = \dots$   
 $S.E. RUN = \dots$   
 $P.C. STA. = 41+89.05$   
 $P.T. STA. = 46+52.06$

**LEGEND**

- PAVEMENT REMOVAL
- DRIVEWAY PAVEMENT REMOVAL (BITUMINOUS)
- DRIVEWAY PAVEMENT REMOVAL (CONCRETE)
- TREE REMOVAL
- TREE TRUNK PROTECTION

REVISIONS	
NAME	DATE
S. LIPKIE	6/07

ILLINOIS DEPARTMENT OF TRANSPORTATION

**EXISTING ROADWAY PLAN**  
 IL. 113 (IL. 129 TO IL. 53)

SCALE: VERT. 1"=50'  
 HORIZ. DATE 9/14/2007

DRAWN BY  
 CHECKED BY