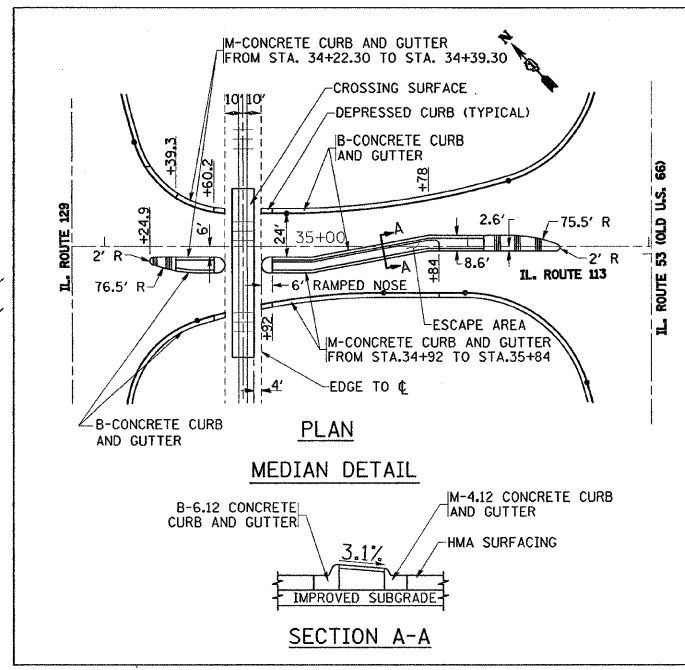
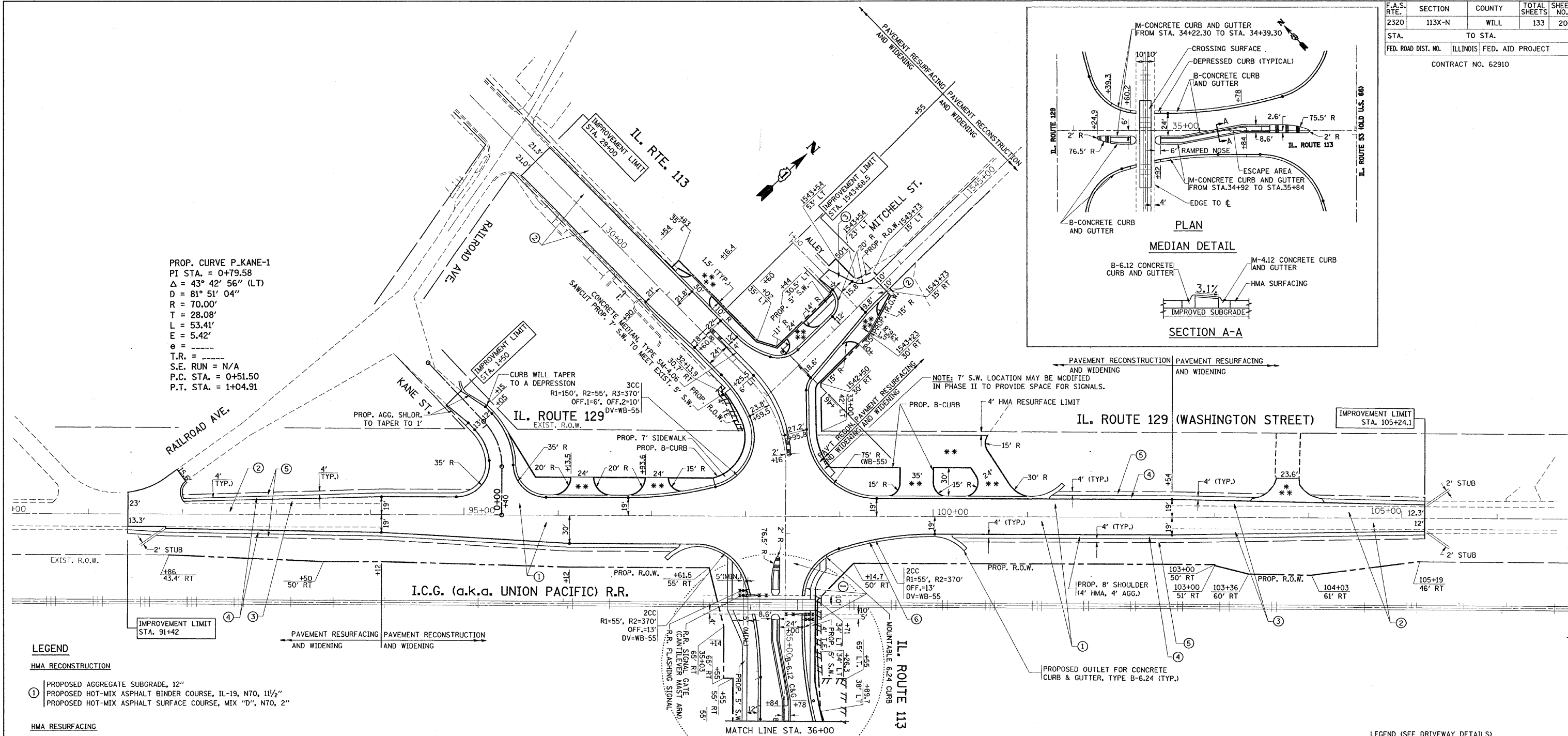


F.A.S. RTE.	SECTION	COUNTY	TOTAL SHEETS	SHEET NO.
2320	113X-N	WILL	133	20
STA.		TO STA.		
FED. ROAD DIST. NO.		ILLINOIS FED. AID PROJECT		
CONTRACT NO. 62910				



PROP. CURVE P.KANE-1  
 PI STA. = 0+79.58  
 $\Delta = 43^\circ 42' 56''$  (LT)  
 $D = 81' 51' 04''$   
 $R = 70.00'$   
 $T = 28.08'$   
 $L = 53.41'$   
 $E = 5.42'$   
 $e =$   
 $T.R. =$   
 $S.E. RUN = N/A$   
 $P.C. STA. = 0+51.50$   
 $P.T. STA. = 1+04.91$



- LEGEND**
- HMA RECONSTRUCTION**
- ① PROPOSED AGGREGATE SUBGRADE, 12"
  - ② PROPOSED HOT-MIX ASPHALT BINDER COURSE, IL-19, N70, 1 1/2"
  - ③ PROPOSED HOT-MIX ASPHALT SURFACE COURSE, MIX "D", N70, 2"
- HMA RESURFACING**
- ② PROPOSED POLYMERIZED LEVELING BINDER (MM) IL-4.75, N50, 1"
  - ③ PROPOSED HOT-MIX ASPHALT SURFACE COURSE, MIX "D", N70, 1 1/2"
- HMA WIDENING**
- ③ PROPOSED AGGREGATE SUBGRADE, 12"
  - ④ PROPOSED HOT-MIX ASPHALT BASE COURSE WIDENING, (HMA BINDER IL-19mm, 10 3/4")
  - ⑤ PROPOSED POLYMERIZED LEVELING BINDER (MM) IL-4.75, N50, 1"
  - ⑥ PROPOSED HOT-MIX ASPHALT SURFACE COURSE, MIX "D", N70, 1 1/2"
- HMA SHOULDER**
- ④ PROPOSED HMA SHOULDER, 8" (TYP.)
- AGGREGATE SHOULDER**
- ⑤ PROPOSED AGGREGATE SHOULDER, TYPE B
- CURB AND GUTTER**
- ⑥ PROPOSED COMBINATION CONCRETE CURB AND GUTTER, TYPE B-6.24 (TYP.)

- NOTES:**
- ALL UTILITY COMPANIES RELOCATING WITHIN THE FOLLOWING AREAS SHOULD BE NOTIFIED OF THE POTENTIAL SOIL CONTAMINATION.
- STATION 98+80 TO STATION 99+50 0 TO 60 FEET LT (IL 129-WASHINGTON STREET, LUCENTA TIRE, SITE 752B-2, 100 BLOCK OF EAST MAIN STREET). CONTAMINANTS OF CONCERN SAMPLING PARAMETERS: ARSENIC.
  - STATION 1542+60 TO STATION 1543+30 0 TO 35 FEET LT (MITCHELL STREET, CASEY'S GENERAL STORE, SITE 752B-1, 280 EAST MAIN STREET). CONTAMINANTS OF CONCERN SAMPLING PARAMETERS: TCLP LEAD.
  - STATION 102+80 TO STATION 103+45 0 TO 60 FEET RT (IL 129-WASHINGTON STREET, VACANT LOT (STANDARD OIL COMPANY), SITE 752B-3, NORTH OF INTERSECTION OF OAK STREET AND FRONT STREET). CONTAMINANTS OF CONCERN SAMPLING PARAMETERS: ARSENIC.
  - STATION 164+35 TO STATION 165+20 0 TO 45 FEET RT (IL 53-FRONT STREET, AMOCO, SITE 752B-B 105 NORTH FRONT STREET). CONTAMINANTS OF CONCERN SAMPLING PARAMETERS: BETX, PAH's TCLP LEAD.
- THE FOLLOWING AREAS CAN BE MANAGED ON-SITE AS FILL.
- STATION 98+80 TO STATION 99+50 0 TO 60 FEET LT (IL 129-WASHINGTON STREET, LUCENTA TIRE, SITE 752B-2, 100 BLOCK OF EAST MAIN STREET). CONTAMINANTS OF CONCERN SAMPLING PARAMETERS: ARSENIC.
  - STATION 102+80 TO STATION 103+45 0 TO 60 FEET RT (IL 129-WASHINGTON STREET, VACANT LOT (STANDARD OIL COMPANY), SITE 752B-3, NORTH OF INTERSECTION OF OAK STREET AND FRONT STREET). CONTAMINANTS OF CONCERN SAMPLING PARAMETERS: ARSENIC.

- LEGEND (SEE DRIVEWAY DETAILS)**
- \* HMA DRIVEWAY - RESIDENTIAL ENTRANCE
  - \*\* HMA DRIVEWAY - COMMERCIAL ENTRANCE
  - \*\*\* CONCRETE DRIVEWAY - RESIDENTIAL ENTRANCE
  - \*\*\*\* CONCRETE DRIVEWAY - COMMERCIAL ENTRANCE

REVISIONS	
NAME	DATE

ILLINOIS DEPARTMENT OF TRANSPORTATION

**PROPOSED ROADWAY PLAN**  
 IL. 113 (IL. 129 TO IL. 53)

SCALE: VERT. 1"=50'  
 HORIZ. DATE 9/14/2007

DRAWN BY  
 CHECKED BY