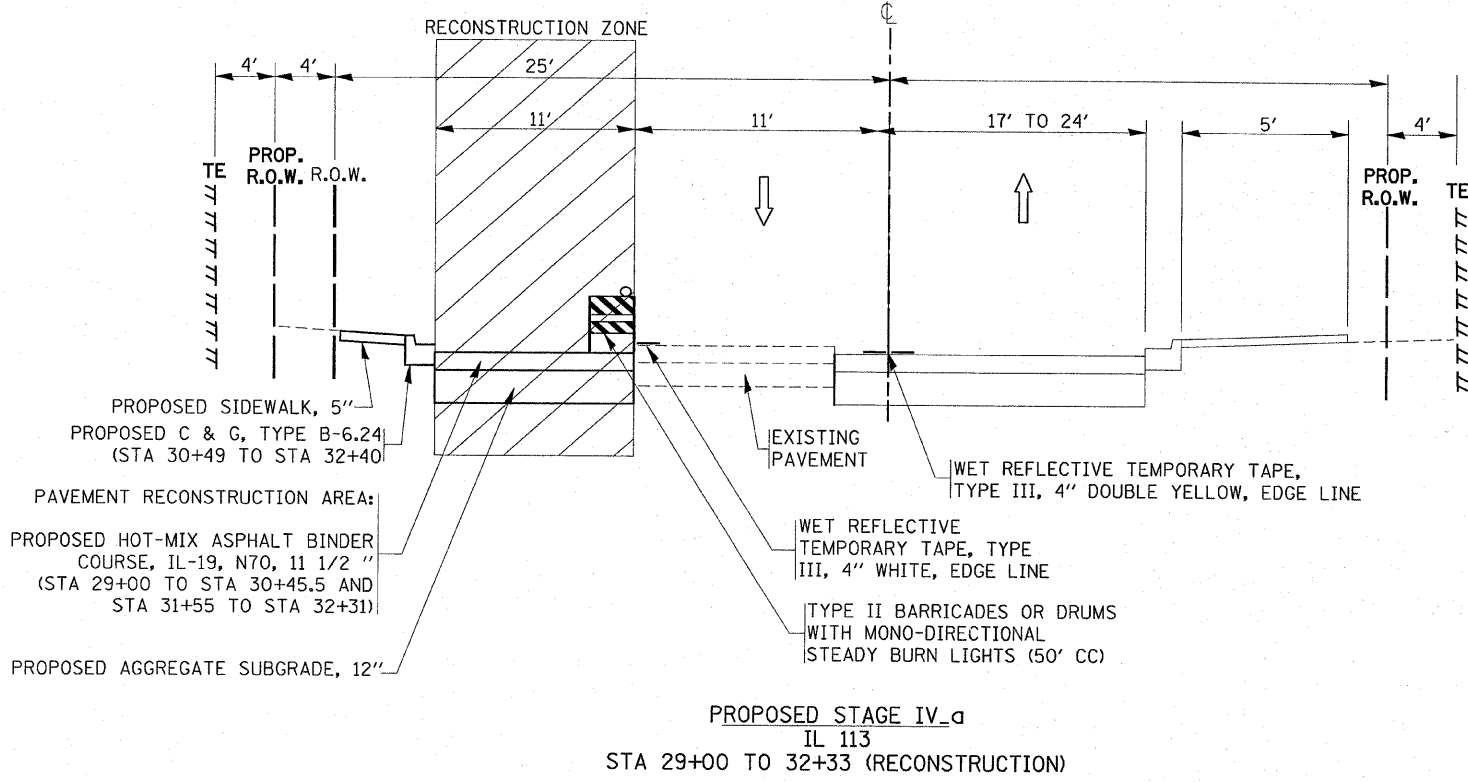
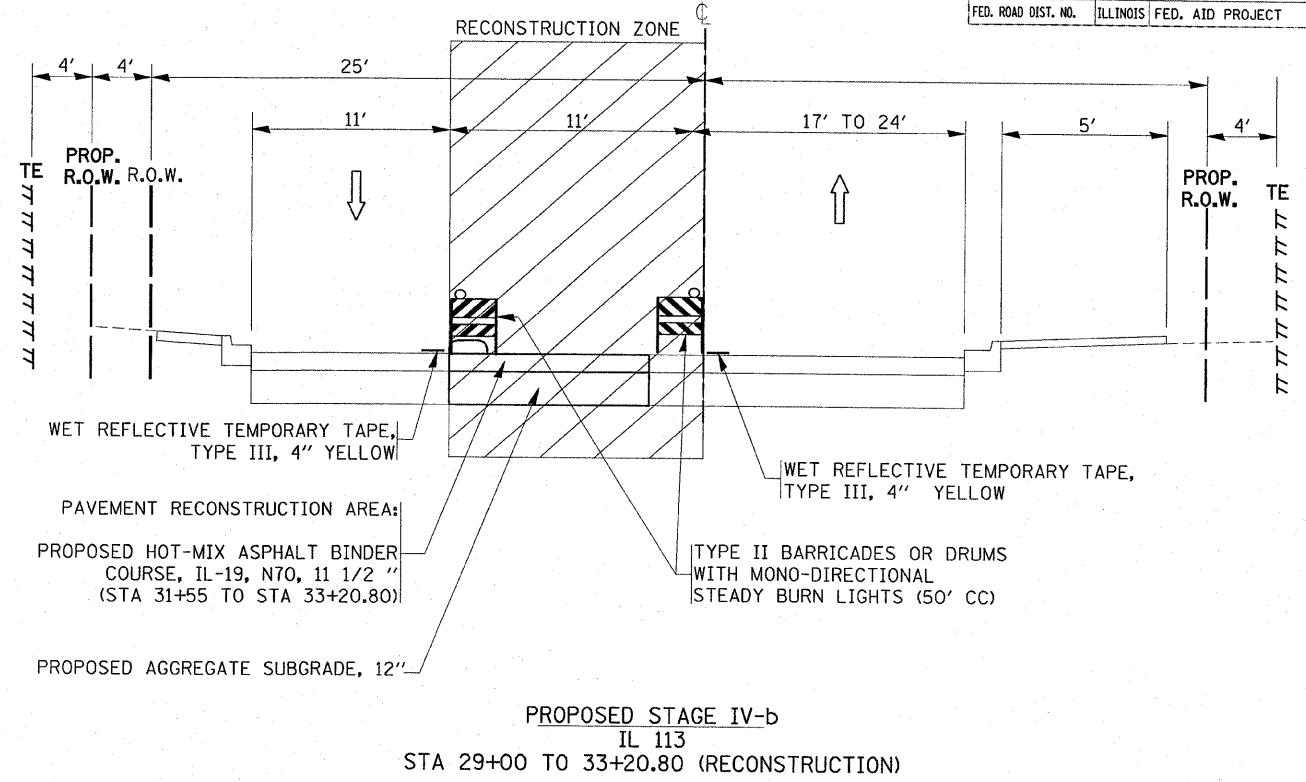


F.A.S. RTE.	SECTION	COUNTY	TOTAL SHEETS	SHEET NO.
2320	113X-N	WILL	33	33
STA.		TO STA.		
FED. ROAD DIST. NO.		ILLINOIS FED. AID PROJECT		

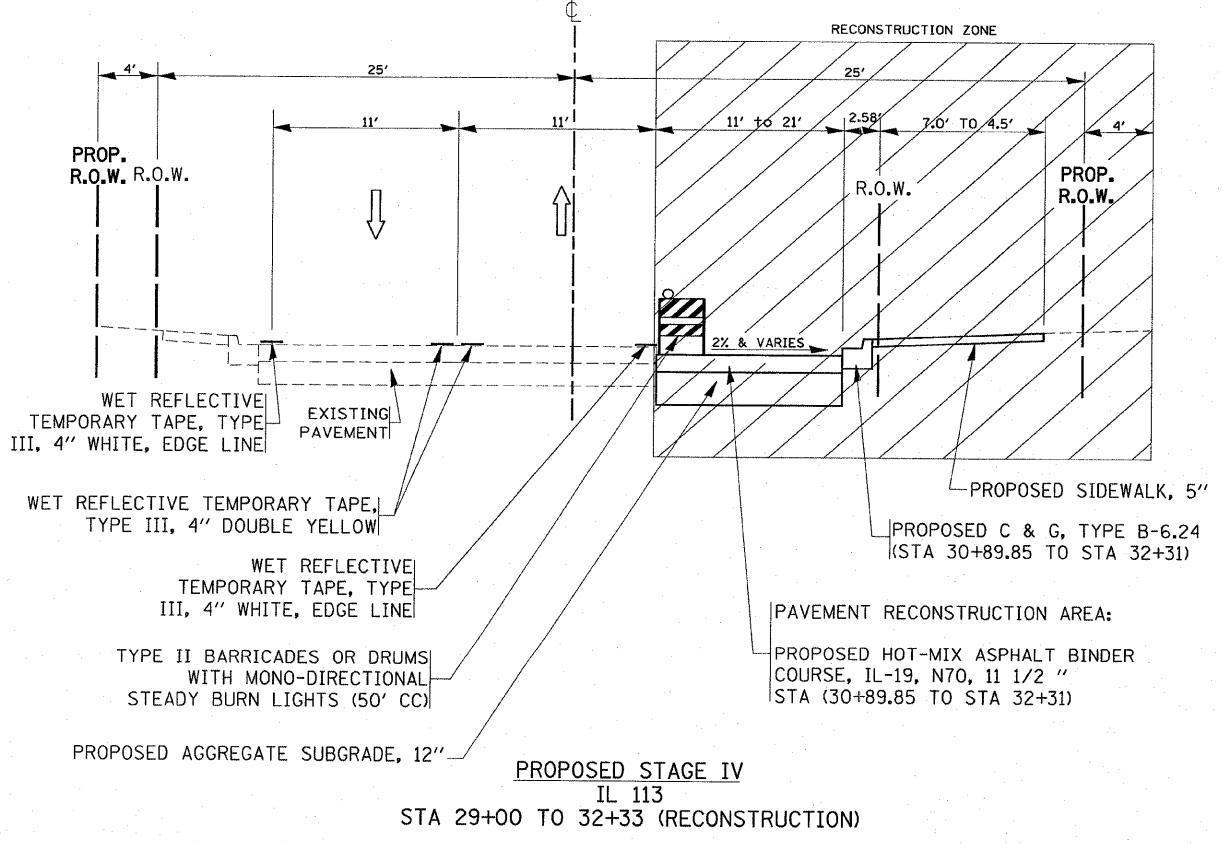
IL. RTE. 113



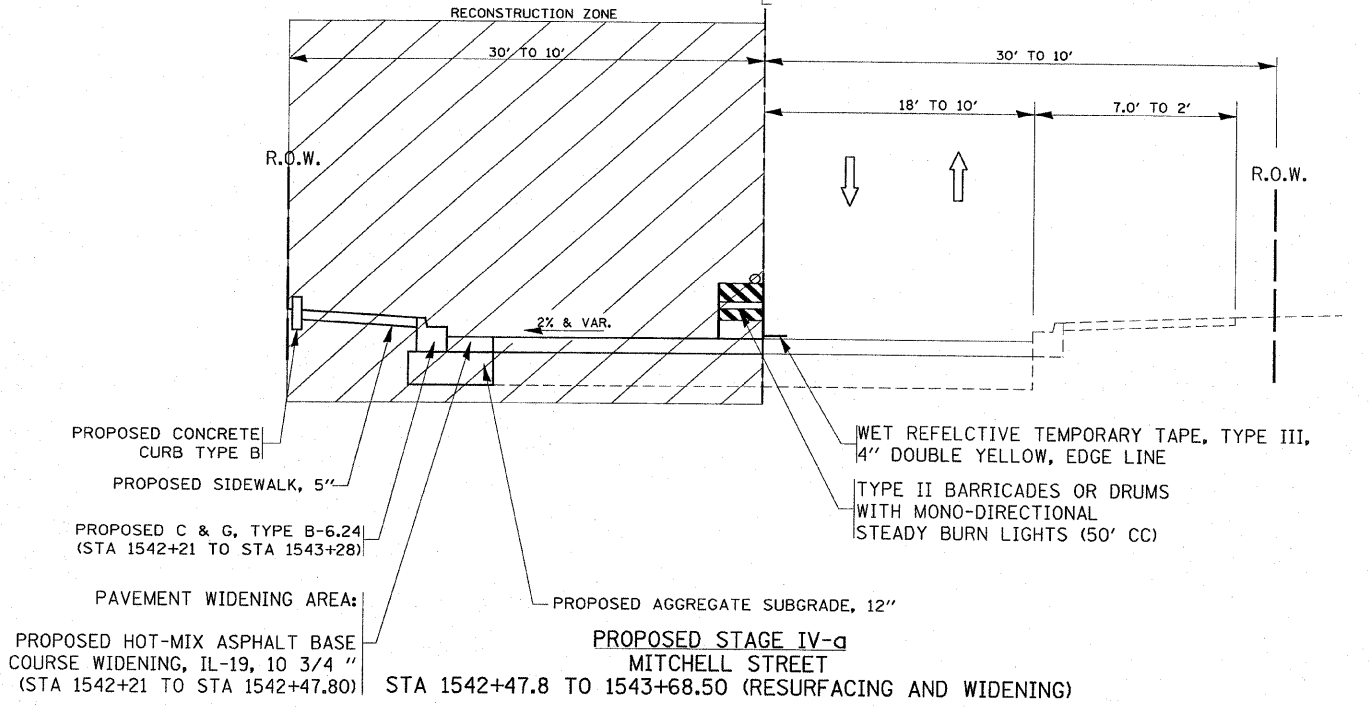
IL. RTE. 113



IL. RTE. 113



MITCHELL ST.



PLOT DATE = 6/28/2007
 PLOT SCALE = 50/0000' / IN.
 USER NAME = hmdanah

REVISIONS	
NAME	DATE

ILLINOIS DEPARTMENT OF TRANSPORTATION
 ILLINOIS 113 AT
 ILLINOIS 129 AND ILLINOIS 53
 EXISTING AND PROPOSED
 TYPICAL SECTION
 STAGE IV (a & b)
 DRAWN BY
 CHECKED BY

SCALE: VERT. HORIZ.
 DATE