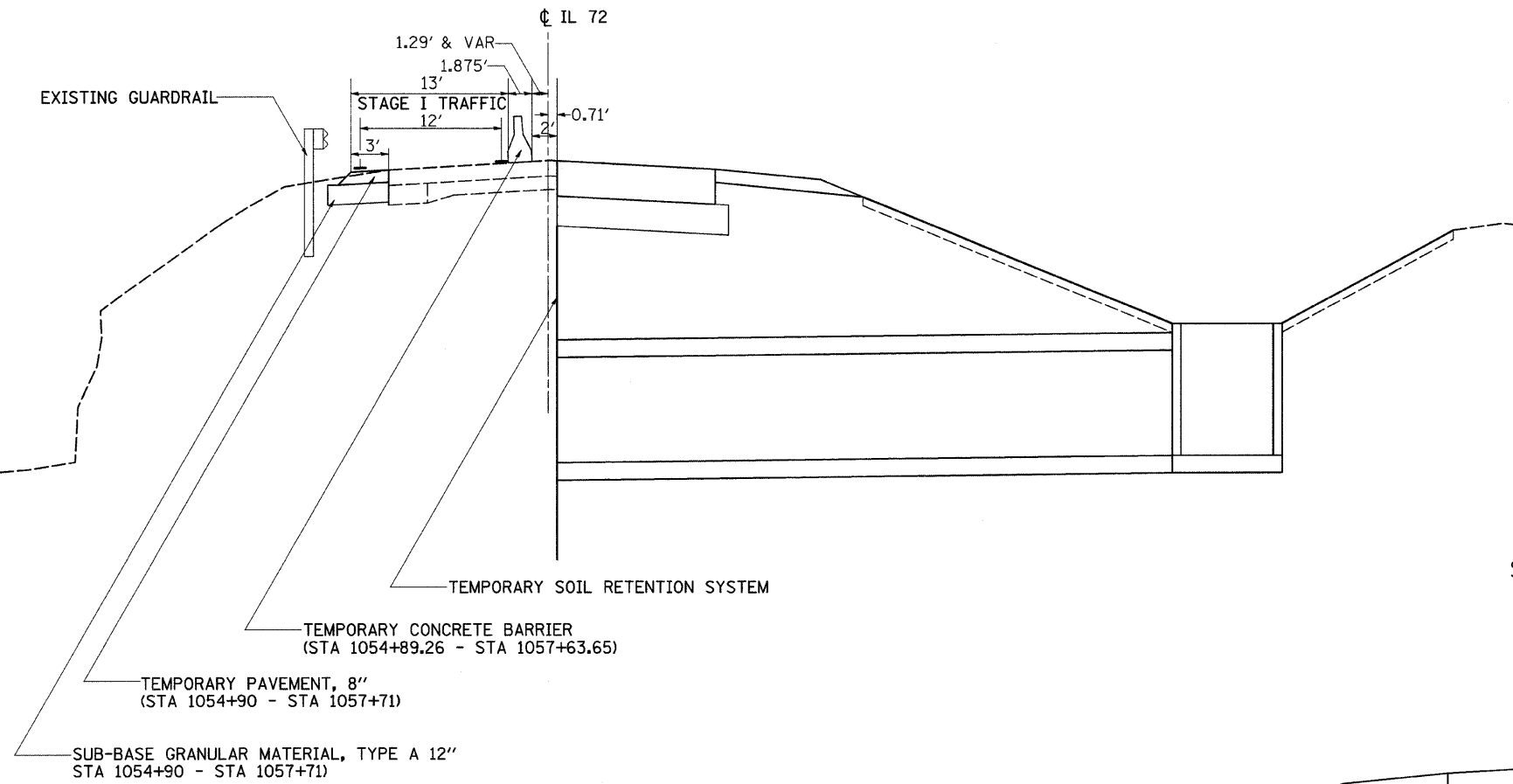


F.A.P. RTE.	SECTION	COUNTY	TOTAL SHEETS	SHEET NO.
549	117 T	OGLE	86	16
STA.		TO STA.		
FED. ROAD DIST. NO.		ILLINOIS FED. AID PROJECT		

# STAGING TYPICAL SECTIONS

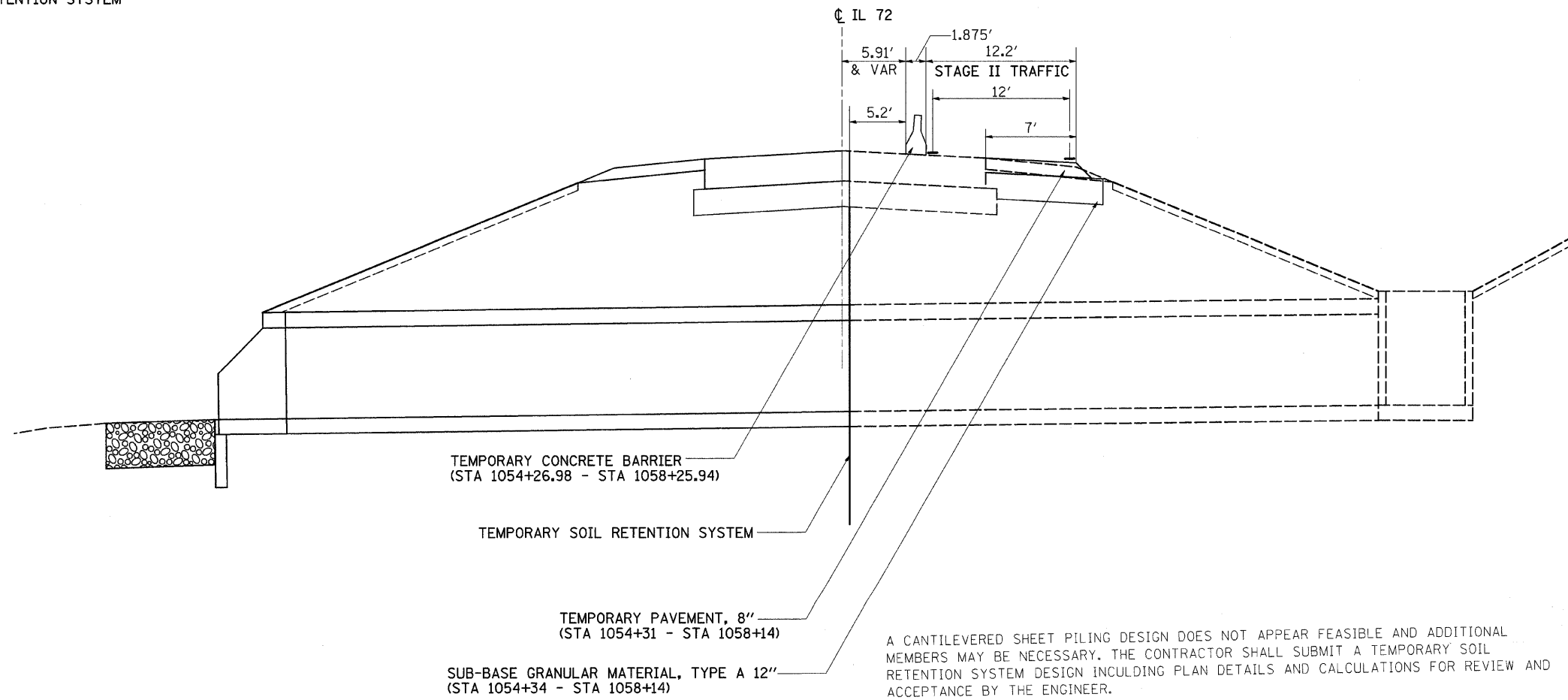
## STAGE I

STRUCTURE NO. 3



## STAGE II

STRUCTURE NO. 3



A CANTILEVERED SHEET PILING DESIGN DOES NOT APPEAR FEASIBLE AND ADDITIONAL MEMBERS MAY BE NECESSARY. THE CONTRACTOR SHALL SUBMIT A TEMPORARY SOIL RETENTION SYSTEM DESIGN INCLUDING PLAN DETAILS AND CALCULATIONS FOR REVIEW AND ACCEPTANCE BY THE ENGINEER.

THE CONTRACTOR SHALL USE BORING B-2A AS A REFERENCE WHEN DESIGNING THE TEMPORARY SOIL RETENTION SYSTEM.

PLOT DATE = Fri Dec 28 13:53:48 2007  
 FILE NAME = c:\p\objects\p210706\j107061.dwg  
 PLOT SCALE = 80.0000 / IN.  
 USER NAME = gertj