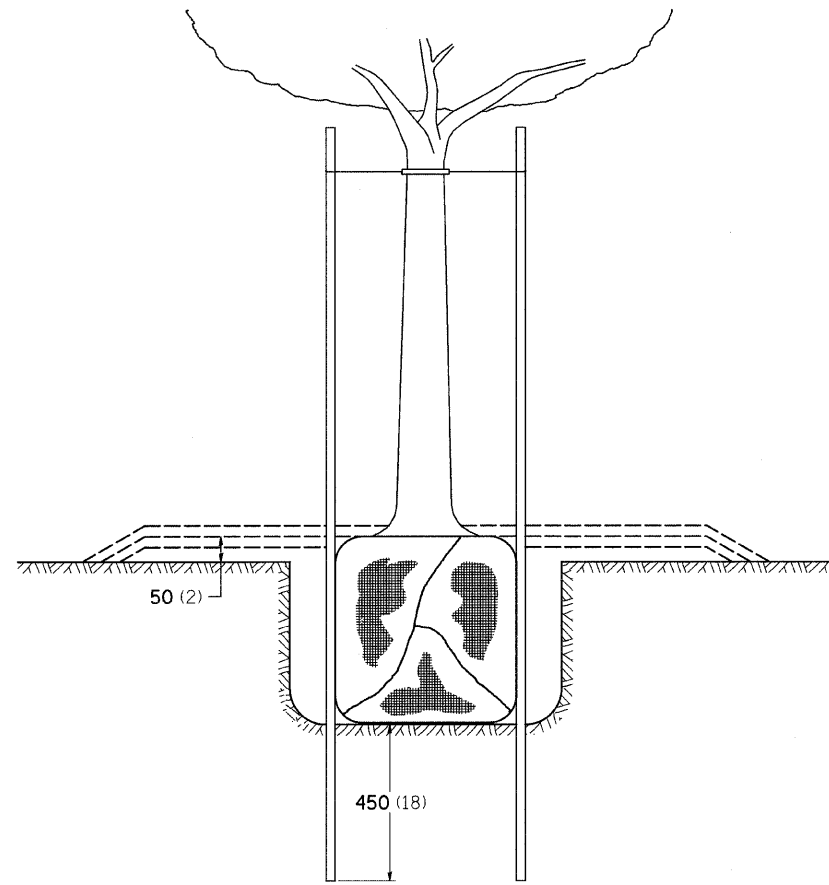
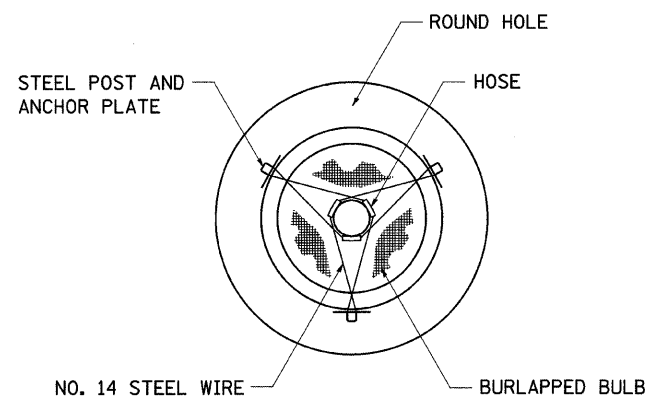


| | | | | |
|---------------------|---------|---------------------------|--------------|-----------|
| F.A.P. RTE. | SECTION | COUNTY | TOTAL SHEETS | SHEET NO. |
| 549 | 117 T | OGLE | 86 | 71 |
| STA. | | TO STA. | | |
| FED. ROAD DIST. NO. | | ILLINOIS FED. AID PROJECT | | |

DETAILS OF PLANTING AND BRACING TREES

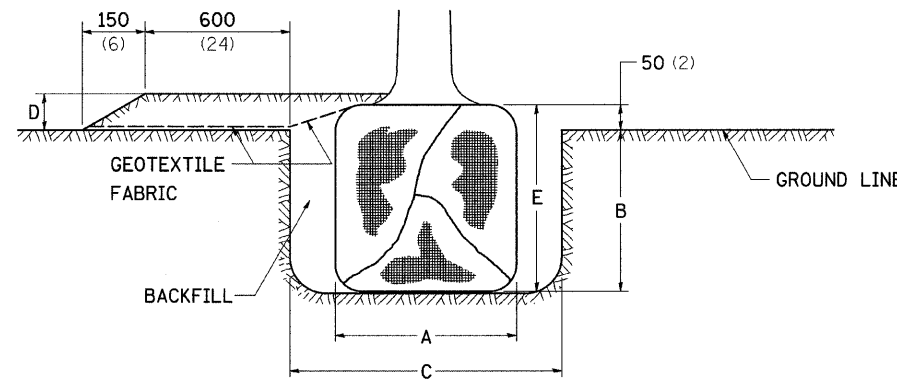


TREES SMALLER THAN 115 (4 1/2) IN DIAMETER

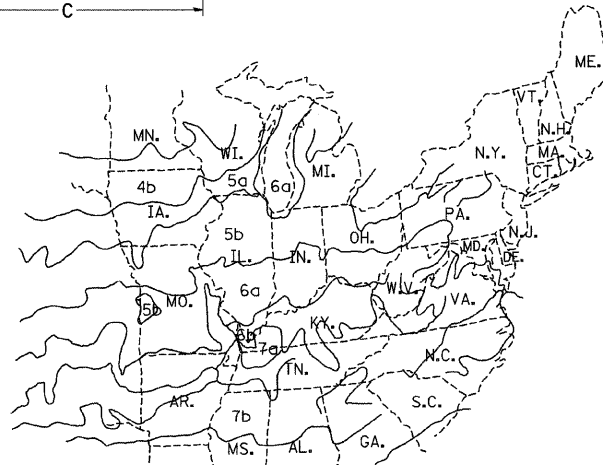
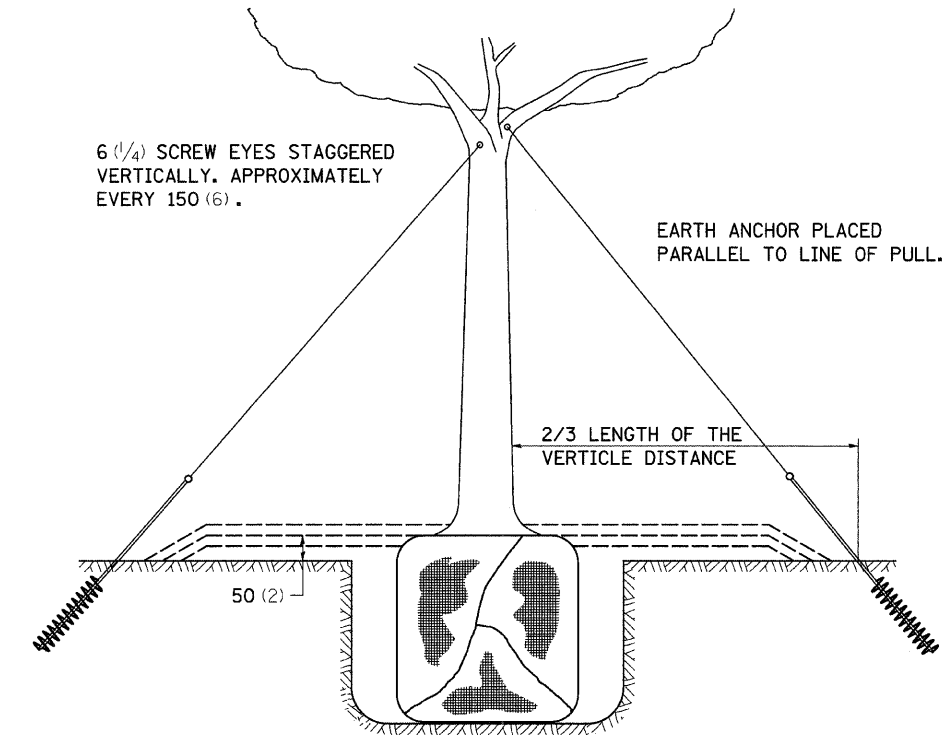


| SMALL | A | B | C | D | E | F |
|---------------------|-------------------------------|--------------------------|--------------------------|--------------------------|----------------------------|---|
| TREE SIZE | DIAMETER OF BALL OR ROOT SYS. | DEPTH OF HOLE EXCAVATION | WIDTH OF HOLE EXCAVATION | THICKNESS OF MULCH COVER | DEPTH OF BALL OR ROOT SYS. | VOLUME OF MULCH COVER m ³ (CU. YDS.) |
| 1.5-1.8m (5'-6') | 400 (16) | 250 (10) | 750 (30) | 100 (4) | 300 (12) | 0.41 (0.54) |
| 1.5-1.8m (5'-6') BB | 400 (16) | 250 (10) | 750 (30) | 100 (4) | 300 (12) | 0.41 (0.54) |
| 1.8-2.0m (6'-7') | 450 (18) | 300 (12) | 750 (30) | 100 (4) | 350 (14) | 0.41 (0.54) |
| 2.0-2.4m (7'-8') | 500 (20) | 275 (11) | 750 (30) | 100 (4) | 325 (13) | 0.41 (0.54) |
| 2.4-3.0m (8'-10') | 600 (24) | 350 (14) | 900 (36) | 100 (4) | 400 (16) | 0.47 (0.61) |
| 3.0-3.6m (10'-12') | 650 (26) | 375 (15) | 900 (36) | 100 (4) | 425 (17) | 0.47 (0.61) |

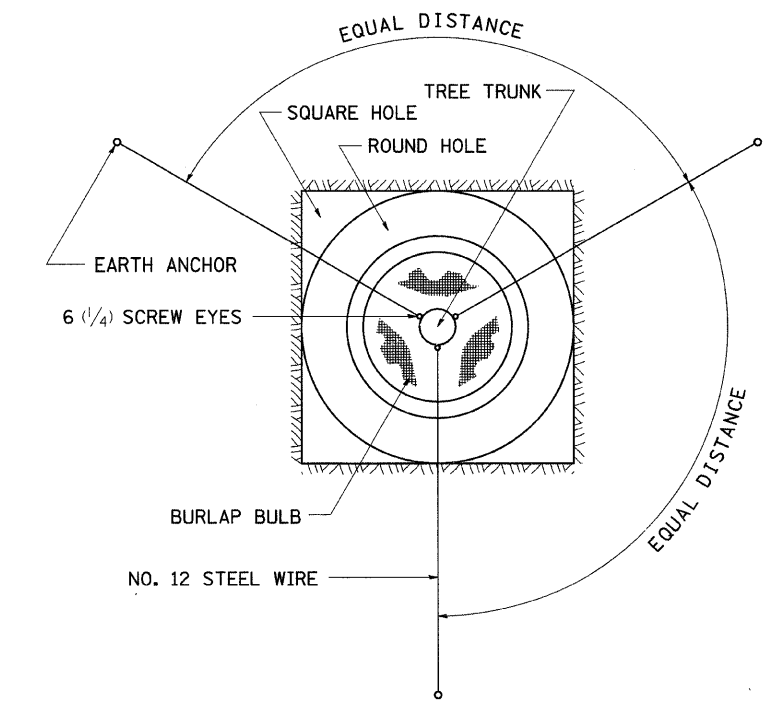
| LARGE | A | B | C | D | E | F |
|----------------------|-------------------------------|--------------------------|--------------------------|--------------------------|----------------------------|---|
| TREE SIZE | DIAMETER OF BALL OR ROOT SYS. | DEPTH OF HOLE EXCAVATION | WIDTH OF HOLE EXCAVATION | THICKNESS OF MULCH COVER | DEPTH OF BALL OR ROOT SYS. | VOLUME OF MULCH COVER m ³ (CU. YDS.) |
| 0-50 (0-2) | 500 (20) | 275 (11) | 900 (36) | 100 (4) | 325 (13) | 0.47 (0.61) |
| 50-65 (2-2 1/2) BB | 600 (24) | 350 (14) | 1200 (48) | 100 (4) | 400 (16) | 0.60 (0.78) |
| 65-75 (2 1/2-3) BB | 700 (28) | 425 (17) | 1200 (48) | 100 (4) | 475 (19) | 0.60 (0.78) |
| 75-90 (3-3 1/2) BB | 800 (32) | 425 (17) | 1500 (60) | 100 (4) | 475 (19) | 0.73 (0.96) |
| 90-100 (3 1/2-4) BB | 900 (36) | 500 (20) | 1500 (60) | 100 (4) | 550 (22) | 0.73 (0.96) |
| 100-115 (4-4 1/2) BB | 1000 (40) | 550 (22) | 1800 (72) | 100 (4) | 600 (24) | 0.89 (1.16) |
| 115-125 (4 1/2-5) BB | 1100 (44) | 600 (24) | 1800 (72) | 100 (4) | 650 (26) | 0.89 (1.16) |
| 125-140 (5-5 1/2) BB | 1200 (48) | 675 (27) | 2100 (84) | 100 (4) | 725 (29) | 1.06 (1.38) |



TREES OVER 115 (4 1/2) IN DIAMETER



PLANT HARDINESS ZONE MAP
U.S. DEPARTMENT OF AGRICULTURE
AGRICULTURAL RESEARCH SERVICE
PUBLICATION NO. 814



ALL DIMENSIONS ARE IN MILLIMETERS (INCHES) UNLESS OTHERWISE NOTED.

PLOT DATE = Fri Dec 28 13:53:01 2007
FILE NAME = c:\projects\2107065\107065.dgn
PLOT SCALE = 80.0000 / IN.
REFERENCE = #REF#