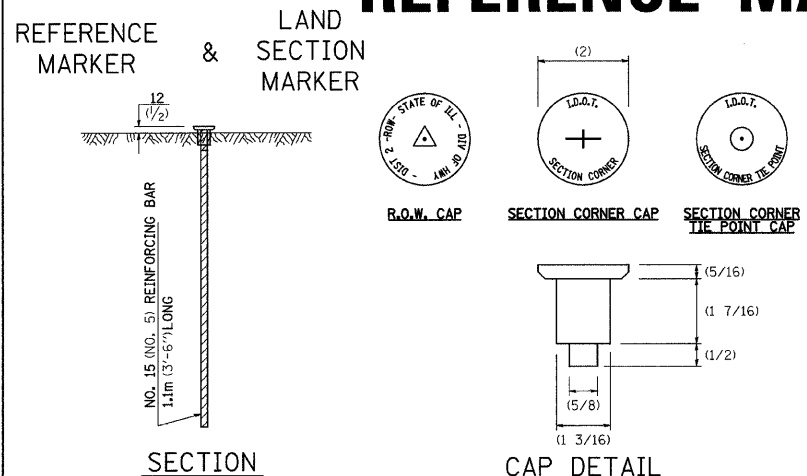
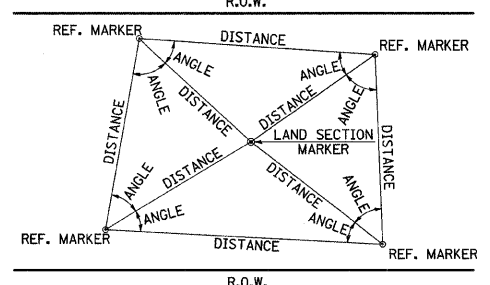


# LAND SECTION & REFERENCE MARKERS



## METHOD OF REFERENCING MARKERS



- USE INSTRUMENT TIES TO NEARBY LAND-MARKS (STEEPLES, TOWERS, SILOS, ETC.)
- IN CULTIVATED FIELDS, SET 600(2') OR MORE BELOW GROUND SURFACE.
- IN FENCE LINE OR PROTECTED AREA SET TOP AT GROUND LEVEL.

## METHOD OF REFERENCING POINTS

REFERENCE MARKERS SHALL BE USED TO TIE IN PERMANENT LAND SECTION AND 1/4 SECTION CORNERS. WHERE LAND SECTION MARKERS FALL IN THE SHOULDERS OR GRAVEL SURFACES, THE TOP OF THE BAR SHALL BE KEPT 75(3) BELOW THE SURFACE. LAND SECTION MARKERS LOCATED IN TRAFFIC LANES SHALL NOT BE REPLACED.

METAL CAPS SHALL BE PLACED ON TOP OF THE REINFORCEMENT BAR. THERE ARE 3 TYPES OF CAPS, ONE FOR THE RIGHT-OF-WAY CORNERS, ONE FOR THE SECTION CORNERS AND ONE FOR THE SECTION CORNER TIE POINTS. THE CAPS WILL BE SUPPLIED BY IDOT, CALL CHIP CORDELL (815) 284-5370 A MINIMUM OF ONE WEEK BEFORE THE CAPS ARE NEEDED

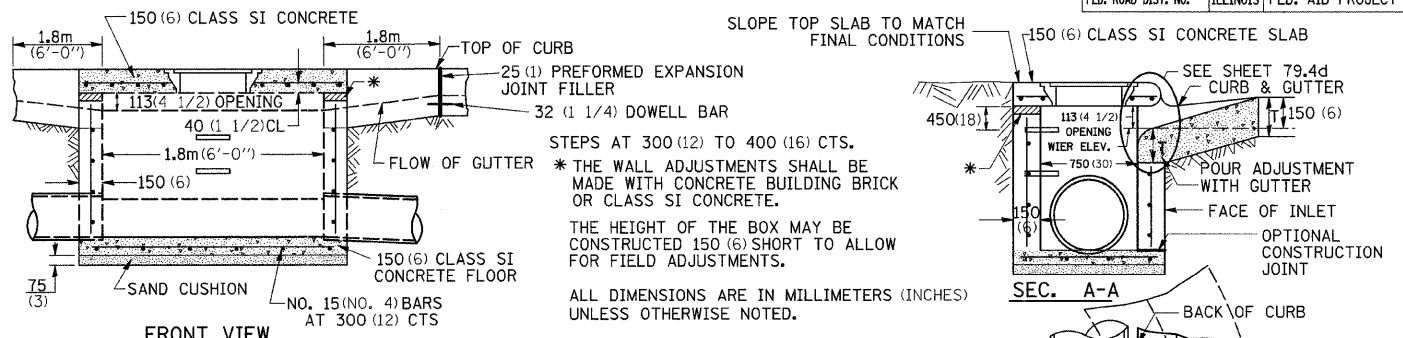
ALL DIMENSIONS ARE IN MILLIMETERS (INCHES) UNLESS OTHERWISE NOTED.

## LAND SECTION & REFERENCE MARKERS 63.4

REVISED 4-22-05

# INLET SPECIAL NO. 5

F.A.P. RTE.	SECTION	COUNTY	TOTAL SHEETS	SHEET NO.
654	109M	CARROLL	76	39
STA.	TO STA.			
FED. ROAD DIST. NO.	ILLINOIS FED. AID PROJECT			



SEE STANDARD 602701 FOR DETAILS OF STEPS.  
 25 (1) PREFORMED EXPANSION JOINTS AS SHOWN SHALL BE PROVIDED ON EACH SIDE OF INLET.  
 CLASS SI CONCRETE OR PRECAST CONCRETE SHALL BE USED THROUGHOUT.  
 THE SIDE WALLS MAY BE BUILT AS PRECAST SEGMENTAL SECTIONS.  
 REINFORCEMENT FOR INLET SPECIAL NO. 5 SHALL BE ACCORDING TO DISTRICT STANDARD 79.4e

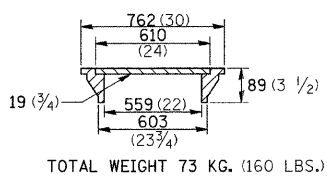
STEPS SHALL BE OMITTED WHEN DEPTH OF INLET IS LESS THAN 1.5 m (5 ft.)  
 THE INLET SHALL BE CAST IN PLACE OR PRECAST.  
 EXCEPT AS NOTED HEREON INLET SPECIAL NO. 5 SHALL BE CONSTRUCTED IN ACCORDANCE WITH SECTION 602 OF THE STANDARD SPECIFICATIONS.

THE CONTRACT UNIT PRICE EACH FOR INLET SPECIAL NO. 5 SHALL INCLUDE THE COST OF FURNISHING AND INSTALLING THE FRAME, LID, REINFORCEMENT BARS, FLOOR AND TOP SLABS, CAST IRON STEPS (IF USED).

THE CURB AND GUTTER WILL BE PAID FOR SEPARATELY AND WILL BE MEASURED THROUGH THE INLET.

THE CURB AND GUTTER ADJACENT TO AND 1.8m (6 FT) ON EITHER SIDE OF THE INLET SHALL BE CONSTRUCTED AS SHOWN WITH NO ADDITIONAL COMPENSATION FOR THE TRANSITION.

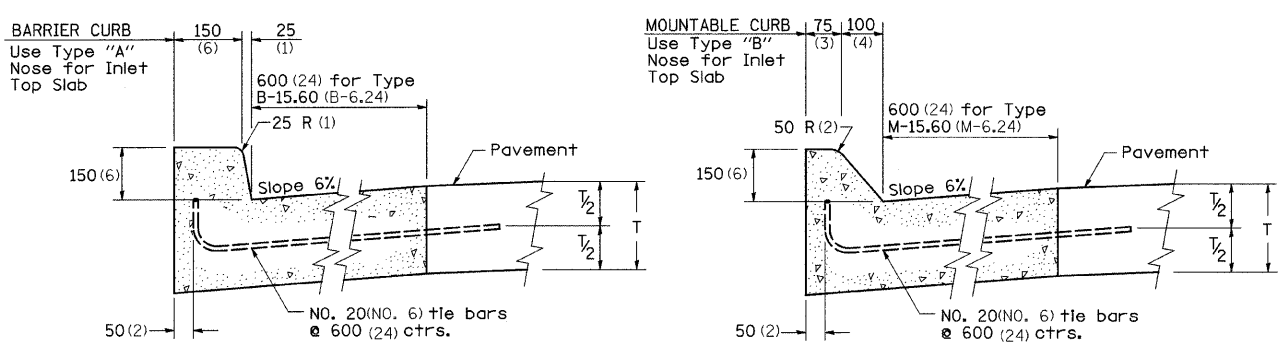
## LIGHT WEIGHT MANHOLE CASTING



## INLET SPECIAL NO. 5 79.4b

REVISED 4-4-05

# NOSE TYPE FOR INLET TOP SLAB



**TYPE "A"**  
 TO BE USED ON EXISTING OR PROPOSED 150(6) BARRIER CURB

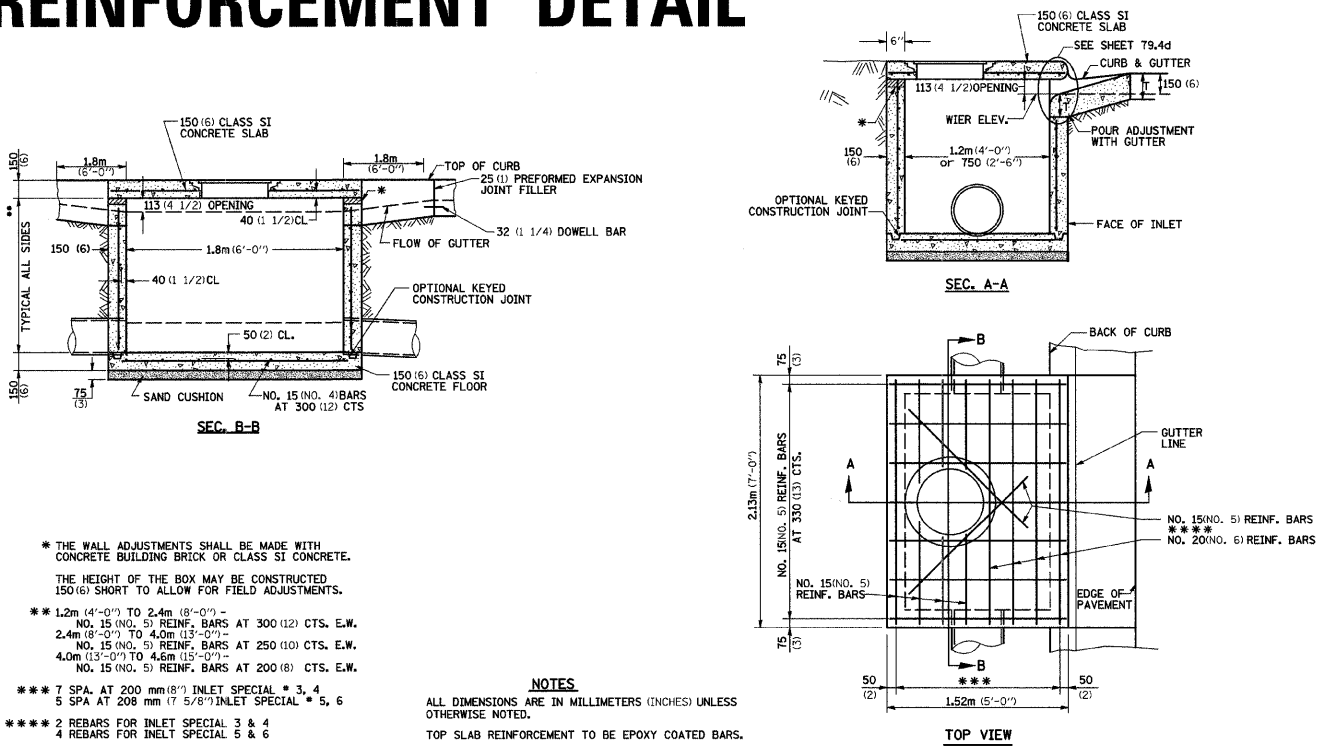
**TYPE "B"**  
 TO BE USED ON PROPOSED 150(6) MOUNTABLE CURB

ALL DIMENSIONS ARE IN MILLIMETERS (INCHES) UNLESS OTHERWISE NOTED.

## NOSE TYPE FOR INLET TOP SLAB 79.4d

REVISED 2-14-95

# INLET SPECIAL NO. 3, 4, 5, 6 REINFORCEMENT DETAIL



\* THE WALL ADJUSTMENTS SHALL BE MADE WITH CONCRETE BUILDING BRICK OR CLASS SI CONCRETE.  
 THE HEIGHT OF THE BOX MAY BE CONSTRUCTED 150(6) SHORT TO ALLOW FOR FIELD ADJUSTMENTS.  
 \*\* 1.2m (4'-0") TO 2.4m (8'-0") - NO. 15 (NO. 5) REINF. BARS AT 300 (12) CTS. E.W.  
 2.4m (8'-0") TO 4.0m (13'-0") - NO. 15 (NO. 5) REINF. BARS AT 250 (10) CTS. E.W.  
 4.0m (13'-0") TO 4.6m (15'-0") - NO. 15 (NO. 5) REINF. BARS AT 200 (8) CTS. E.W.  
 \*\*\* 7 SPA. AT 200 mm (8") INLET SPECIAL \* 3, 4  
 5 SPA AT 208 mm (7 5/8") INLET SPECIAL \* 5, 6  
 \*\*\*\* 2 REBARS FOR INLET SPECIAL 3 & 4  
 4 REBARS FOR INLET SPECIAL 5 & 6

ALL DIMENSIONS ARE IN MILLIMETERS (INCHES) UNLESS OTHERWISE NOTED.  
 TOP SLAB REINFORCEMENT TO BE EPOXY COATED BARS.

## INLET SPECIAL NO. 3, 4, 5, 6 REINFORCEMENT DETAIL 79.4e

REVISED 4-4-05

PLOT DATE = Thu Dec 13 14:54:43 2007  
 FILE NAME = c:\p\projects\2009\986\dlb\986cap1.dgn  
 PLOT SCALE = 1:1  
 REFERENCE = #REF#