

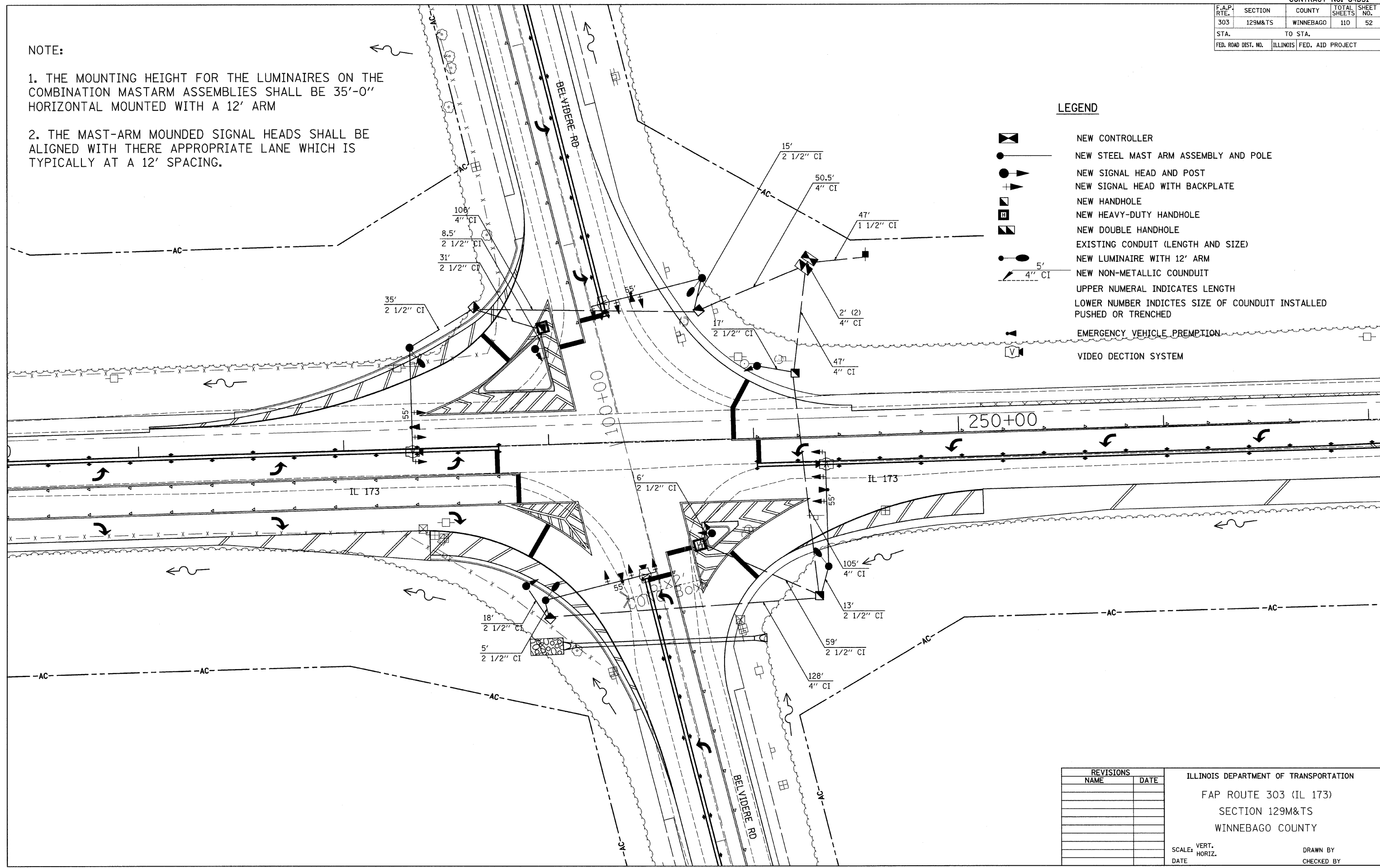
F.A.P. RTE.	SECTION	COUNTY	TOTAL SHEETS	SHEET NO.
303	129M&TS	WINNEBAGO	110	52
STA.		TO STA.		
FED. ROAD DIST. NO.		ILLINOIS FED. AID PROJECT		

NOTE:

1. THE MOUNTING HEIGHT FOR THE LUMINAIRES ON THE COMBINATION MASTARM ASSEMBLIES SHALL BE 35'-0" HORIZONTAL MOUNTED WITH A 12' ARM
2. THE MAST-ARM MOUNDED SIGNAL HEADS SHALL BE ALIGNED WITH THERE APPROPRIATE LANE WHICH IS TYPICALLY AT A 12' SPACING.

LEGEND

- NEW CONTROLLER
- NEW STEEL MAST ARM ASSEMBLY AND POLE
- NEW SIGNAL HEAD AND POST
- NEW SIGNAL HEAD WITH BACKPLATE
- NEW HANDHOLE
- NEW HEAVY-DUTY HANDHOLE
- NEW DOUBLE HANDHOLE
- EXISTING CONDUIT (LENGTH AND SIZE)
- NEW LUMINAIRE WITH 12' ARM
- NEW NON-METALLIC CONDUIT
- UPPER NUMERAL INDICATES LENGTH
- LOWER NUMERAL INDICATES SIZE OF CONDUIT INSTALLED PUSHED OR TRENCHED
- EMERGENCY VEHICLE PREEMPTION
- VIDEO DETECTION SYSTEM



PLOT DATE = Mon, Dec 03 09:46:06 2007
 FILE NAME = c:\p\projects\p207197\d07197signalhead.dgn
 PLOT SCALE = 20.0000 / IN.
 USER NAME = polzamej

REVISIONS		ILLINOIS DEPARTMENT OF TRANSPORTATION
NAME	DATE	
		FAP ROUTE 303 (IL 173) SECTION 129M&TS WINNEBAGO COUNTY

SCALE: VERT. _____
 HORIZ. _____
 DATE _____

DRAWN BY _____
 CHECKED BY _____