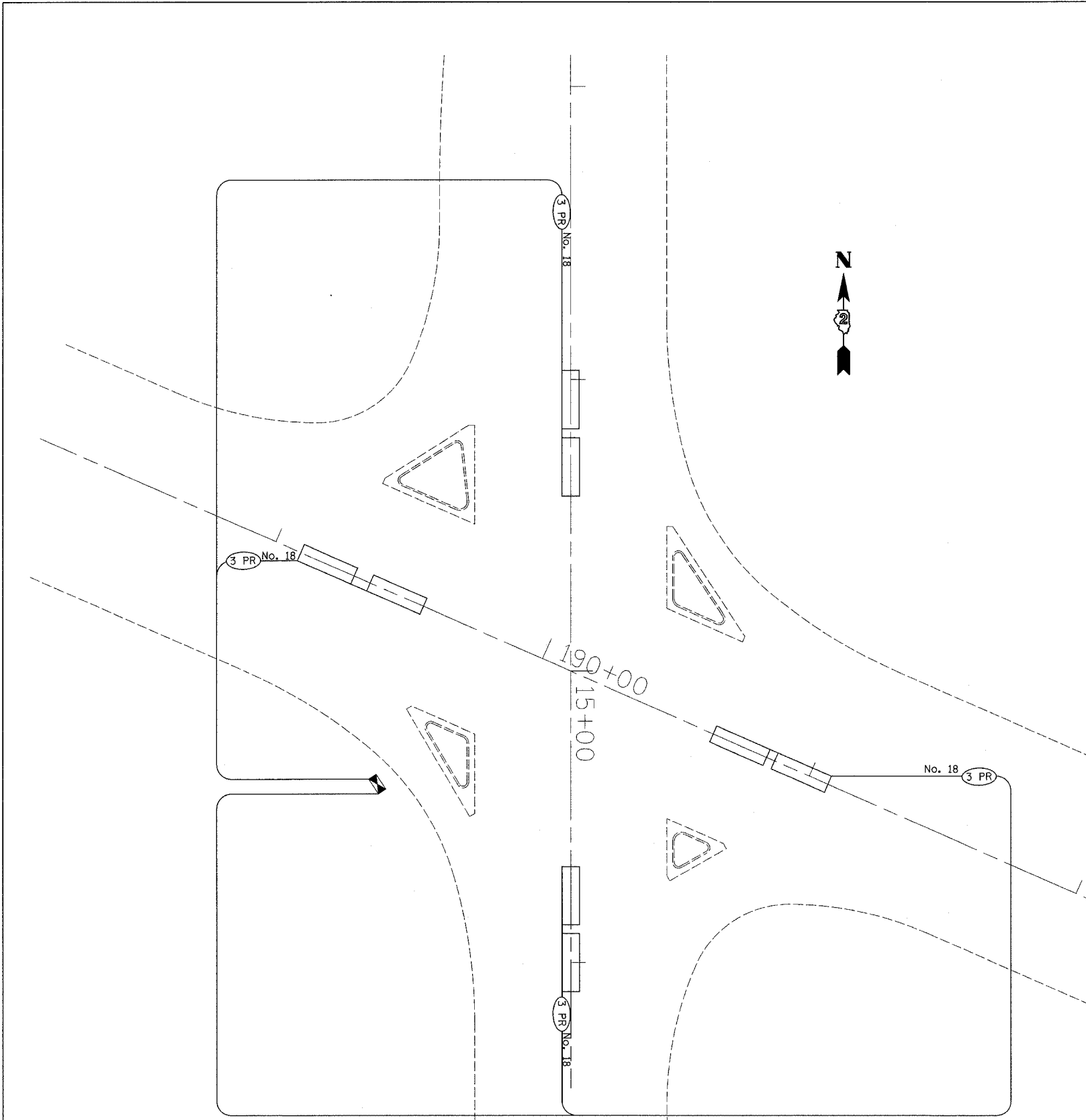
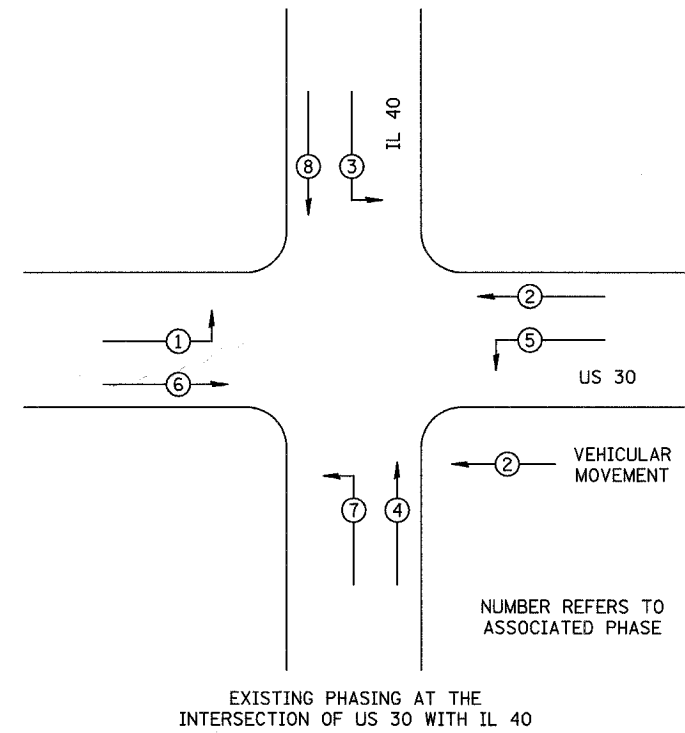


F.A.U. RTE.	SECTION	COUNTY	TOTAL SHEETS	SHEET NO.
5564	111PM	WHITESIDE	16	13
STA.		TO STA.		
FED. ROAD DIST. NO.	ILLINOIS	FED. AID PROJECT		



REMOVE AND REPLACE ELECTRIC CABLE IN CONDUIT, LEAD-IN, No. 18, 3 PR UTILIZING EXISTING CONDUIT.

PHASE DESIGNATION DIAGRAM



EXISTING PHASING AT THE INTERSECTION OF US 30 WITH IL 40

PLOT DATE = Thu, Dec 08 07:54:53 2007
 FILE NAME = c:\p06\secta\2009087\2009087.plt
 PLOT SCALE = 20.0000 / IN.
 USER NAME = hemsorke

REVISIONS	
NAME	DATE

ILLINOIS DEPARTMENT OF TRANSPORTATION

SCALE: VERT. DATE: DRAWN BY: CHECKED BY: