

STATE OF ILLINOIS
DEPARTMENT OF TRANSPORTATION

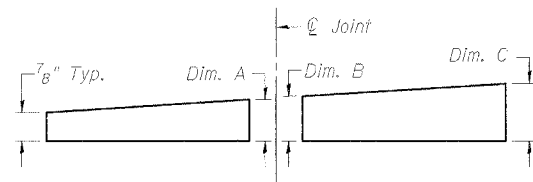
ROUTE NO.	SECTION	COUNTY	TOTAL SHEETS	SHEET NO.
F.A.P. 17	6000 M-1	CARROLL	20	11
FED. ROAD DIST. NO. 7	ILLINOIS	FED. AID PROJECT		

SHEET NO. 6
15 SHEETS

**** SOLE PLATE THICKNESS TABLE**

Bearing Location	Upstream Exterior Stringer Dimension			Downstream Exterior Stringer Dimension			Replace Bearings (See Schedule Sht. 7 of 15)
	A	B	C	A	B	C	
Pile Bent 1 *	7/8"	7/8"	7/8"	7/8"	7/8"	7/8"	X
Pile Bent 2	7/8"	7/8"	7/8"	7/8"	7/8"	7/8"	X
Pile Bent 3	7/8"	7/8"	7/8"	7/8"	7/8"	7/8"	X
Pile Bent 4	7/8"	7/8"	7/8"	7/8"	7/8"	7/8"	X
Pile Bent 5	7/8"	7/8"	7/8"	7/8"	7/8"	7/8"	
Pile Bent 6	7/8"	7/8"	7/8"	7/8"	7/8"	7/8"	
Pile Bent 7	7/8"	7/8"	7/8"	7/8"	7/8"	7/8"	X
Pile Bent 8	7/8"	7/8"	1"	7/8"	7/8"	1"	X
Pile Bent 9	1"	1"	1 1/4"	1"	1"	1 1/4"	
Pile Bent 10	1 1/8"	1 1/4"	1 9/16"	1 1/8"	1 1/4"	1 9/16"	
Pile Bent 11	1 3/16"	1 1/4"	1 9/16"	1 3/16"	1 1/4"	1 9/16"	
Pile Bent 12	1 5/16"	1 3/8"	1 3/4"	1 5/16"	1 3/8"	1 3/4"	X
Bent 1	1 3/16"	1 1/4"	1 9/16"	1 3/16"	1 1/4"	1 9/16"	X
Bent 2	1 3/16"	1 1/4"	1 9/16"	1 3/16"	1 1/4"	1 9/16"	
Bent 3	1 5/16"	1 3/8"	1 3/4"	1 5/16"	1 3/8"	1 3/4"	X
Bent 4	1 3/16"	1 1/4"	1 9/16"	1 3/16"	1 1/4"	1 9/16"	X
Bent 5	1 3/16"	1 1/4"	1 9/16"	1 3/16"	1 1/4"	1 9/16"	
Bent 6	1 5/16"	1 3/8"	1 1 1/16"	1 5/16"	1 3/8"	1 1 1/16"	

Note: Sole Plate Thicknesses shown in above table are those shown in 1985 Repair Plans.

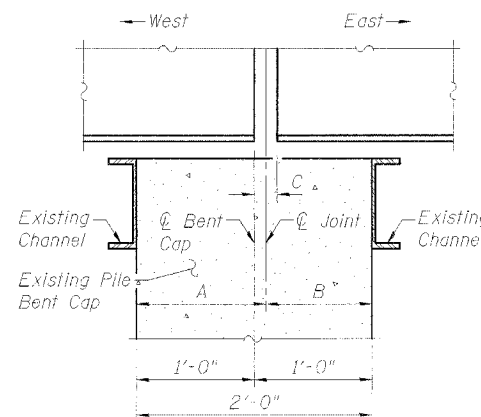


**** SOLE PLATE BEVEL DETAIL**

STRINGER DIMENSION TABLE

Bearing Location	Bearing Type	Upstream Exterior Stringer Dimension			Downstream Exterior Stringer Dimension		
		A	B	C	A	B	C
Pile Bent 1 *	-/E	-	-	-	-	-	-
Pile Bent 2	F/F	1'-4 1/8"	7 7/8"	1"	1'-5 1/2"	6 1/2"	1"
Pile Bent 3	F/F	1'-0 7/8"	11 1/8"	1"	11 1/4"	1'-0 3/4"	1"
Pile Bent 4	E/E	11 5/8"	1'-0 3/8"	2"	1'-0 1/2"	11 1/2"	2"
Pile Bent 5	F/F	1'-0 5/8"	11 3/8"	1"	11"	1'-1"	1"
Pile Bent 6	F/F	8 7/16"	1'-3 9/16"	1 5/8"	11 1/4"	1'-0 3/4"	1"
Pile Bent 7	F/F	1'-3"	9"	1"	1'-0 1/2"	11 1/2"	1"
Pile Bent 8	E/E	10 1/8"	1'-1 7/8"	2 1/4"	1'-0"	1'-0"	2"
Pile Bent 9	F/F	11 1/2"	1'-0 1/2"	1"	11 1/2"	1'-0 1/2"	1"
Pile Bent 10	F/F	8"	1'-4"	2"	8 1/4"	1'-3 3/4"	2 1/2"
Pile Bent 11	F/F	1'-0 5/8"	11 3/8"	1 1/4"	1'-2 5/8"	9 3/8"	1 1/4"
Pile Bent 12	E/E	11 3/4"	1'-0 1/4"	2"	9 7/8"	1'-2 1/8"	2 1/4"
Bent 1	F/F	1'-1 1/8"	10 7/8"	1 1/4"	1'-2 1/8"	9 7/8"	1 1/4"
Bent 2	F/F	9 7/8"	1'-2 1/8"	1 1/4"	9 3/4"	1'-2 1/4"	1"
Bent 3	E/E	1'-1 3/4"	10 1/4"	2"	1'-1 3/4"	10 1/4"	2"
Bent 4	F/F	10"	1'-2"	1"	9 3/4"	1'-2 1/4"	1 1/2"
Bent 5	F/F	1'-2 1/4"	9 3/4"	1 1/2"	1'-2 1/4"	9 3/4"	1 1/2"
Bent 6	E/F	10 1/4"	1'-1 3/4"	1 1/2"	10 1/2"	1'-1 1/2"	1 1/2"

Note: All dimensions shown in above table are those shown in 1985 Repair Plans.



STRINGER DETAIL

TYPICAL MAXIMUM BEARING REACTIONS

53 Ft. Span

ITEM	UNIT	TOTAL
Dead Load	Kip/Stringer	23.7
HS20 Live Load	Kip/Stringer	38.5
Impact	Kip/Stringer	10.8
Total	Kip/Stringer	73.0

- Use these reactions for determination of required jacking forces and for manufacturer's design and fabrication of fabric bearing pads.
- The anticipated maximum height of stringer jacking lift is approximately 8" (= 20" anchor bolt length minus 12" minimum embedment as shown in the 1985 Repair Plans). Contractor shall verify required lifting height for the jacking system design in accordance with the Special Provision for Jacking Existing Superstructure.

DESIGNED	PJL
CHECKED	LLV
DRAWN	MGM
CHECKED	PJL

* Pile Bent 1 is at West Abutment.

** Bevel Sole Plates as required to match grade. See Table This Sht.

*** Expansion = "E"; Fixed = "F"

BEARING DETAILS
F.A.P. RTE. 17 (US 52/IL 64)
OVER MISSISSIPPI RIVER
SECTION 6000 M-1
CARROLL COUNTY (IL)
JACKSON COUNTY (IA)
STRUCTURE NO. 008-6000

STS CONSULTANTS
111 NE Jefferson Ave.
Peoria, Illinois 61602
Ph(309)676-8464
FAX(309)676-5445
IL Design Firm Reg. No. 184-001518