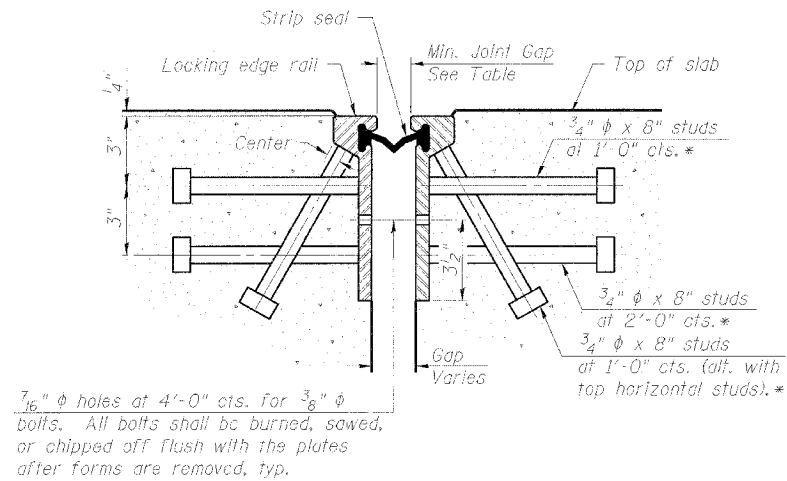


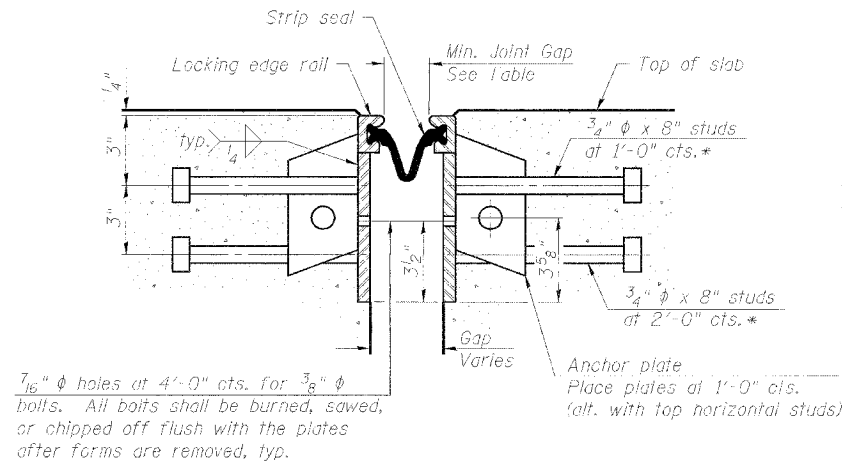
STATE OF ILLINOIS
DEPARTMENT OF TRANSPORTATION

PROJECT NO.	SECTION	COUNTY	TOTAL SHEETS	SHEET NO.
F.A.P. 17	6000 M-1	CARROLL	20	12
FED. ROAD DIST. NO. 7	ILLINOIS	FED. AID PROJECT		

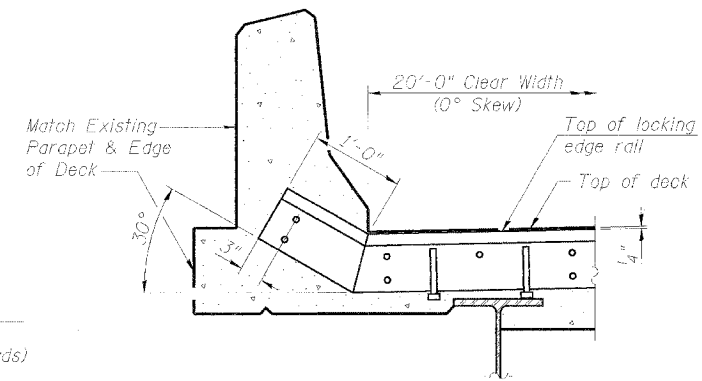
SHEET NO. 7
15 SHEETS



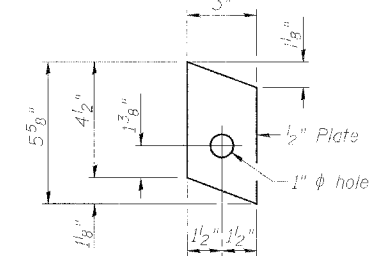
SECTION THRU ROLLED RAIL JOINT



SECTION THRU WELDED RAIL JOINT



TYPICAL END TREATMENT AT PARAPET



ANCHOR PLATE (for welded rail)

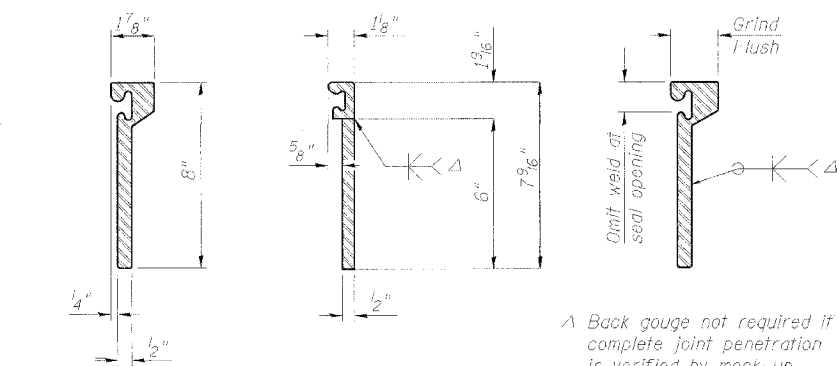
REPLACEMENT SCHEDULE FOR IOWA APPROACH STRIP SEAL JOINTS & BEARINGS

Substructure	Joint Type	Min. Gap	Design Movement (Total Expansion and Contraction)	Furnishing & Installing Fabric Bearings *****		Remove Existing Bearing *****	Clean and Paint Existing Bearings to Remain	Remove and Replace Nonshrink Grout Bearing Pedestals *****
				Expansion	Fixed			
Pile Bent 1 **	Expansion	*** 1 1/2"	5 5/8"	4		4		
Pile Bent 2	Fixed	1 1/2"	0		8	8		1
Pile Bent 3	Fixed	1 1/2"	0		8	8		
Pile Bent 4	Expansion	*** 1 7/8"	2 3/4"	8		8		
Pile Bent 5	Fixed	1 1/2"	0				X	
Pile Bent 6	Fixed	1 1/2"	0				X	
Pile Bent 7	Fixed	1 1/2"	0		8	8		
Pile Bent 8	Expansion	*** 1 7/8"	2 3/4"	8		8		
Pile Bent 9	Fixed	1 1/2"	0				X	
Pile Bent 10	Fixed	1 1/2"	0				X	
Pile Bent 11	Fixed	1 1/2"	0				X	4
Pile Bent 12	Expansion	*** 1 3/4"	2 3/8"	8		8		1 at S. Interior
Bent 1	Fixed	1 1/2"	0		8	8		
Bent 2	Fixed	1 1/2"	0				X	1 at S. Fascia
Bent 3	Expansion	*** 1 1/2"	2"	8		8		
Bent 4	Fixed	1 1/2"	0		8	8		
Bent 5	Fixed	1 1/2"	0				X	
Bent 6	Expansion/Fixed	*** 1 1/2"	1"				X	2 Interior
Total				18 @ 22 ft. Ea.	36 Ea. 40 Ea.	76 Ea.	****	12 Ea.

* Granular or solid flux filled headed studs conforming to Article 1006.32 of the Standard Specifications, automatically end welded.
** Pile Bent 1 is at West Abutment.
*** Expansion joint gap spacing at 50° F.
**** Included in Cleaning and Painting.
***** See also Special Provision for lump sum pay item Jacking Existing Superstructure.
***** See Details Sht. 5 & 6 of 15 for Fabric Bearings.

NOTES

- The strip seal shall be made continuous and shall have a minimum thickness of 1/4". The configuration of the strip seal shall match the configuration of the Locking Edge Rails. Open or "webbed" strip seal gland configurations are not permitted. The gland shall be sized for a maximum rated movement of 4 inches.
- The height and thickness of the Locking Edge Rails shown are minimum dimensions. The actual configuration of the Locking Edge Rails and matching strip seal may vary from manufacturer to manufacturer. Flanged edge rails will not be allowed. Locking Edge Rails may be spliced at slope discontinuities and stage construction joints.
- The manufacturer's recommended installation methods shall be followed.
- The joint opening and deck dimensions detailed on the superstructure are based on a rolled rail expansion joint. If the Contractor elects to use the welded rail expansion joint, the opening and deck dimensions shall be modified according to the dimensions detailed on this sheet. Required modifications shall be made at no additional cost to the State.
- All steel components shall be galvanized after fabrication according to Article 520.03 of the Standard Specifications.



ROLLED (EXTRUDED) RAIL

WELDED RAIL

LOCKING EDGE RAIL SPLICE

The inside of the locking edge rail groove shall be free of weld residue.

LOCKING EDGE RAILS

DESIGNED	P.J.H.
CHECKED	LLV
DRAWN	MGM
CHECKED	P.J.H.

BILL OF MATERIAL

Item	Unit	Total
Preformed Joint Strip Seal	Foot	396

See Schedule this sht. for Joint Gaps and Design Movement.

**PREFORMED JOINT STRIP SEAL
F.A.P. RTE. 17 (US 52/IL 64)
OVER MISSISSIPPI RIVER
SECTION 6000 M-1
CARROLL COUNTY (IL)
JACKSON COUNTY (IA)
STRUCTURE NO. 008-6000**

STS CONSULTANTS
111 NE Jefferson Ave.
Peoria, Illinois 61602
Ph: (309) 676-8464
FAX: (309) 676-5445
IL Design Firm Reg. No. 184-001518