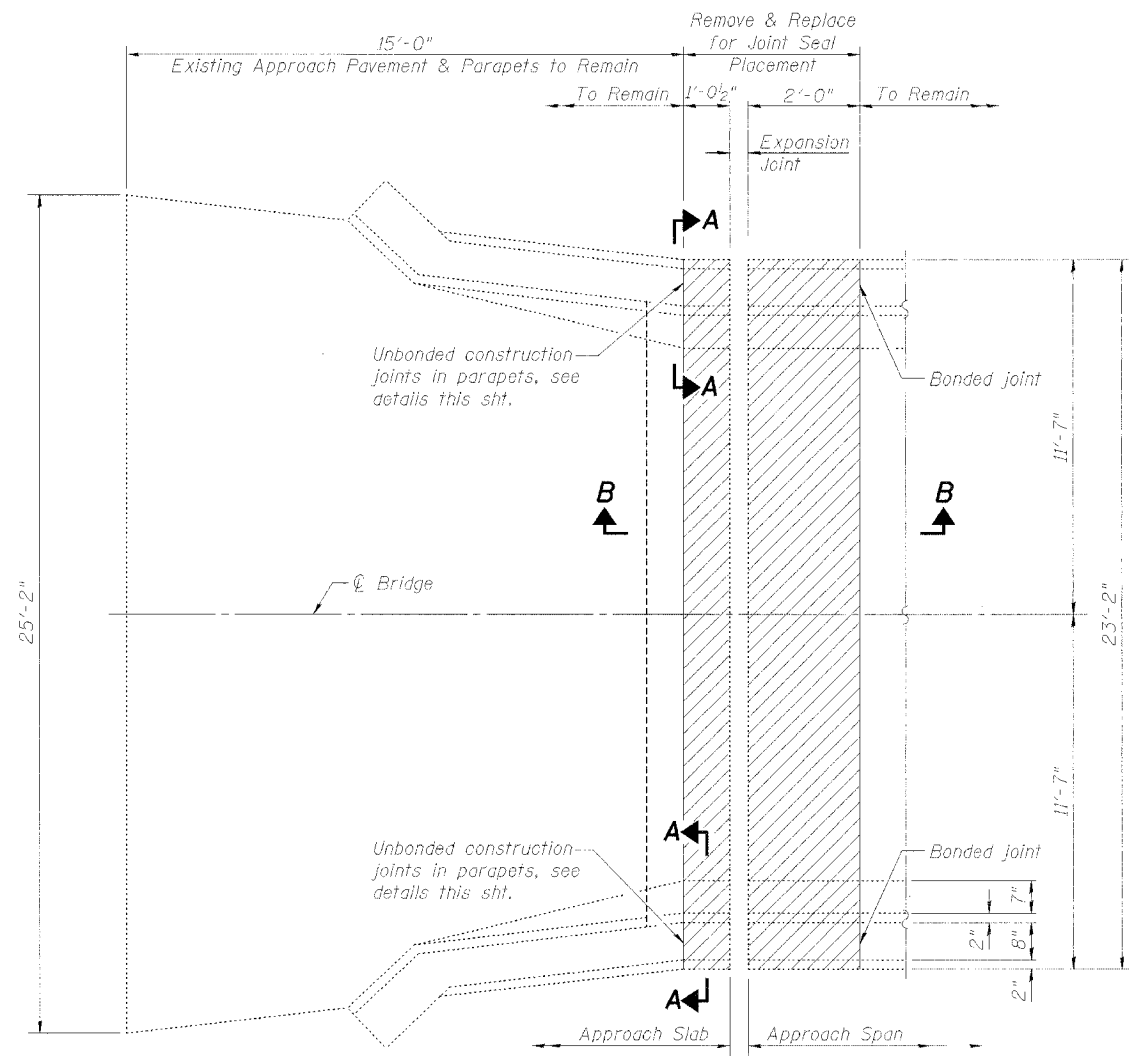
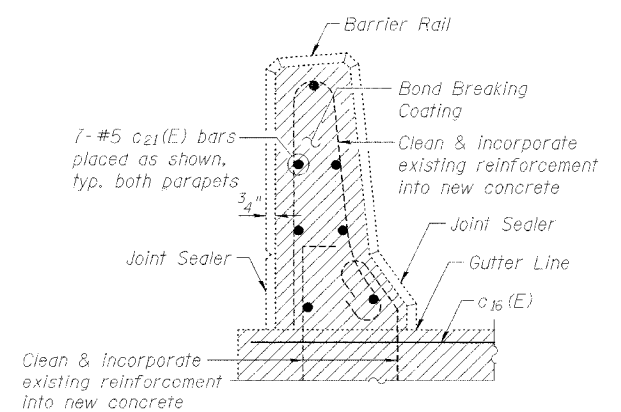


**BARRIER RAIL JOINT DETAILS AT CONSTRUCTION JOINTS**

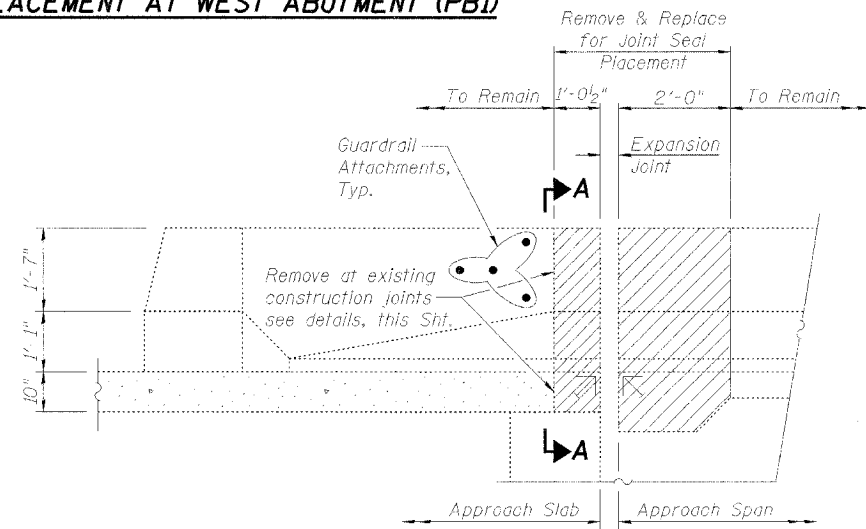


**JOINT REPLACEMENT AT WEST ABUTMENT (PB1)**



**SECTION A-A**

Note: Match Existing Concrete & Replicate Existing Construction Joint. Cost included in Concrete Superstructure.



**SECTION B-B**

**BILL OF MATERIAL**

*BAR	NO.	SIZE	LENGTH	SHAPE	LOCATION
c <sub>21</sub> (E)	14	#5	0'-7"	—	Approach Slab Parapets at PB1, W. Abut.
c <sub>16</sub> (E)	2	#1	22'-11"	—	Approach Slab closure atop W. Abut. Backwall
a <sub>1</sub> (E)	280	#6	22'-11"	—	35 Ends of Slabs at 18 Joints (PB1 thru B6)
e <sub>1</sub> (E)	105	#4	4'-4"	—	35 Ends of Slabs at 18 Joints (PB1 thru B6)
Reinforcement Bars, Epoxy Coated		Pound	9,980		
Concrete Removal		Cu. Yd.	66.7		
Concrete Superstructure		Cu. Yd.	66.7		

\*For cross reference where applicable these are same bar designations as 1985 plans.

See Sht. 8 of 15 for placement of a<sub>1</sub>(E), e<sub>1</sub>(E), and c<sub>16</sub>(E) bars.

**JOINT SEAL REPLACEMENT NOTES**

- Remove existing concrete to lines shown in accordance with Article 501.05 of the Standard Specifications.
- Clean and incorporate existing reinforcement into new concrete thus:
  - Slabs: existing longitudinal (east/west) reinforcement
  - Approach Pavement Closure Concrete atop West Abutment Backwall: vertical reinforcement
  - Parapets: existing vertical and longitudinal (east/west) reinforcement
- Install new joints, new reinforcement and place new concrete to match the lines of the existing concrete, bonding new concrete to old, throughout, except as noted.

**JOINT DETAILS**  
**F.A.P. RTE. 17 (US 52/IL 64)**  
**OVER MISSISSIPPI RIVER**  
**SECTION 6000 M-1**  
**CARROLL COUNTY (IL)**  
**JACKSON COUNTY (IA)**  
**STRUCTURE NO. 008-6000**

**STS CONSULTANTS**  
 111 NE Jefferson Ave.  
 Peoria, Illinois 61602  
 Ph(309)676-8484  
 FAX(309)676-5445  
 IL Design Firm Reg. No. 184-001518

DESIGNED	PJL
CHECKED	LLV
DRAWN	MGM
CHECKED	PJL