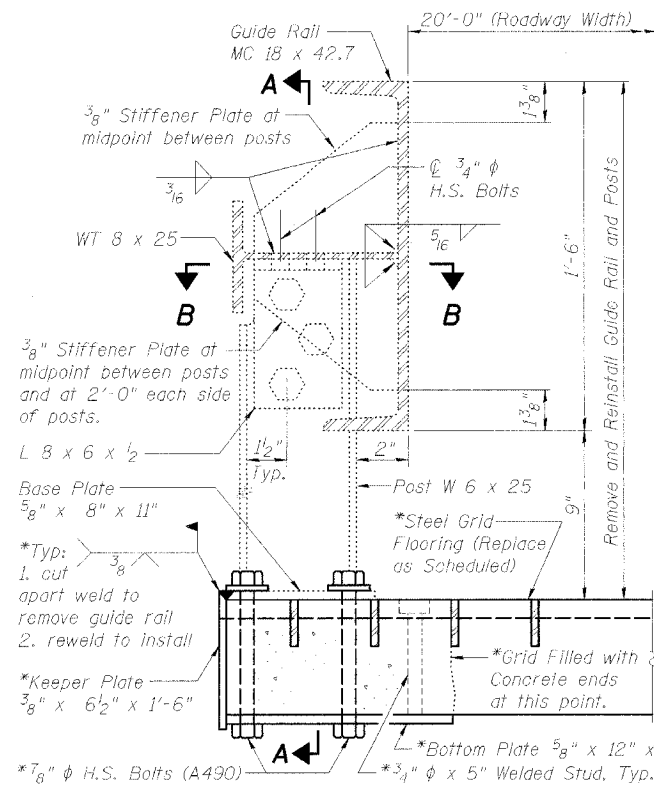
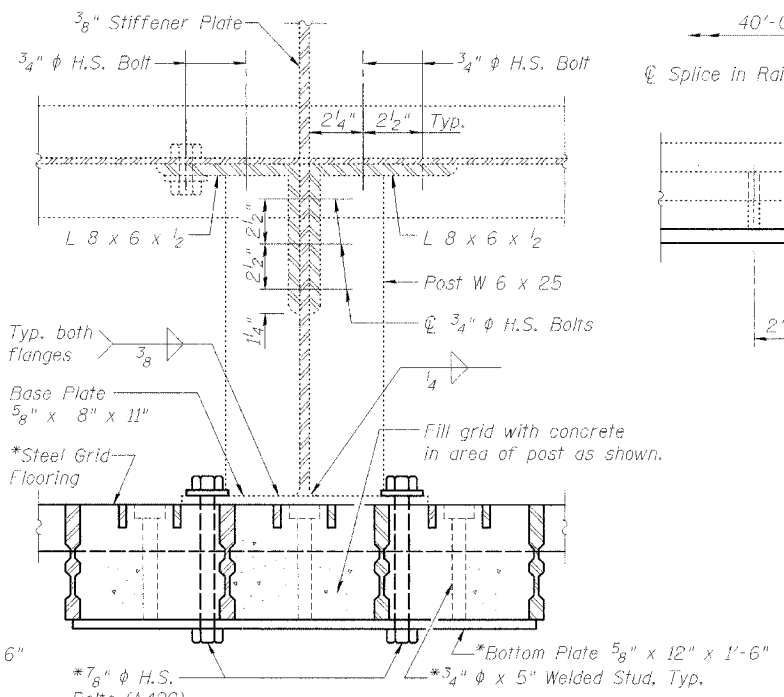


STATE OF ILLINOIS
DEPARTMENT OF TRANSPORTATION

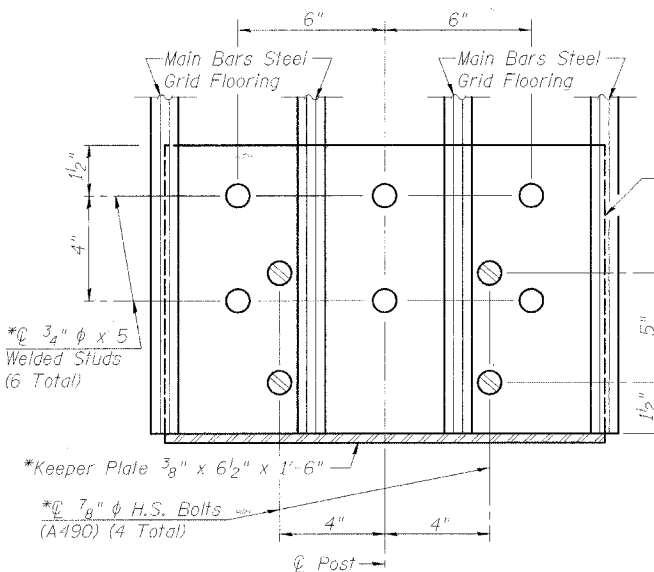
FOUR'S NO.	SECTION	COUNTY	DATE	SHEET	SHEET NO.
F.A.P. 17	6000 M-1	CARROLL	20	16	15 SHEETS
FED. ROAD DIST. NO. 7	ILLINOIS	FED. AID PROJECT			



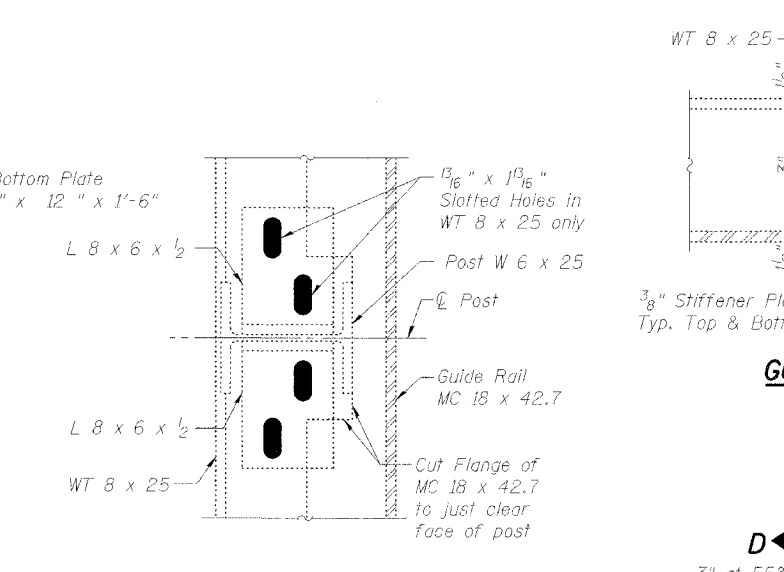
GUIDE RAIL SECTION



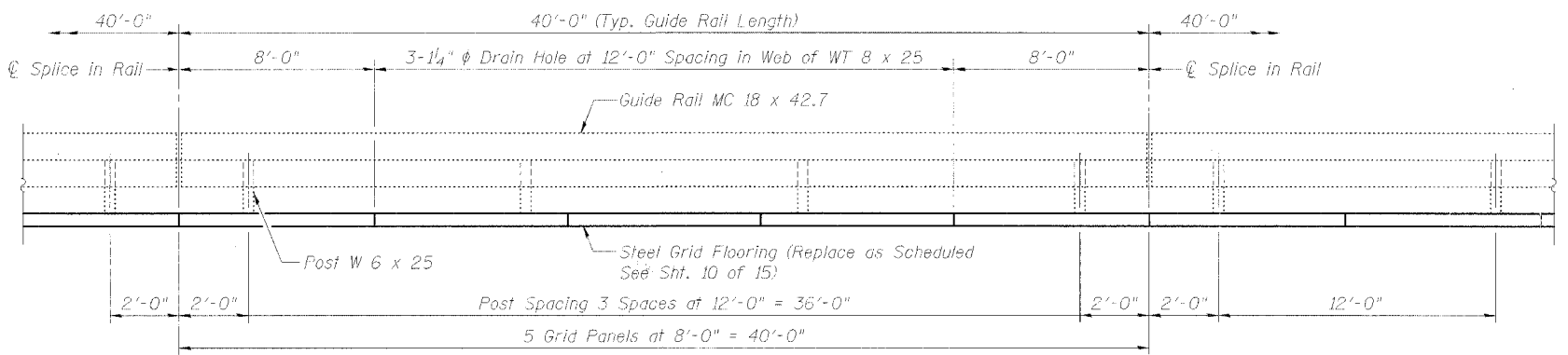
SECTION A-A



***PLAN BOTTOM PLATE**

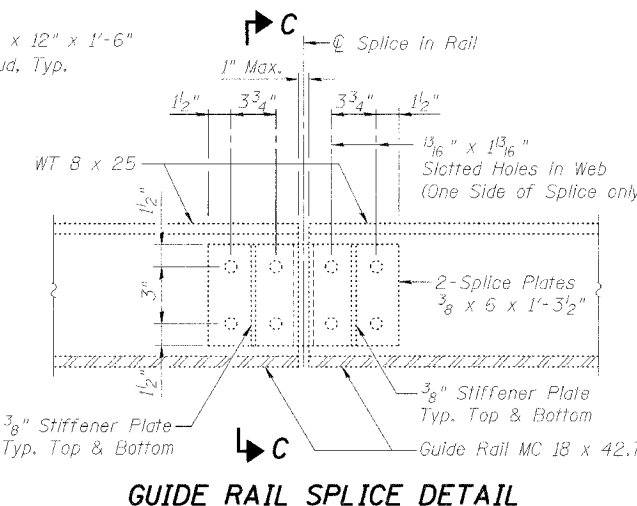


SECTION B-B

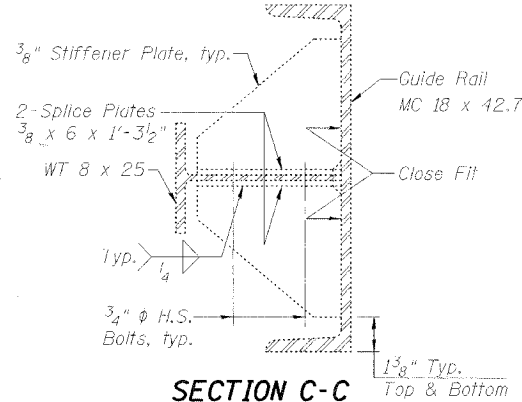


GUIDE RAIL POST SPACING

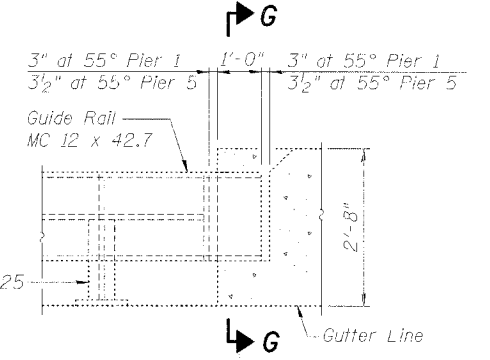
Note: Verify deck grid panel lengths before ordering replacement panels. See Schedule Sht. 10 of 15.



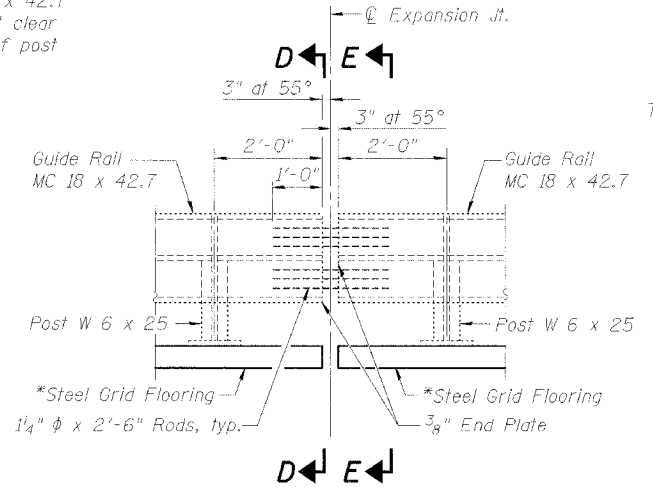
GUIDE RAIL SPLICE DETAIL



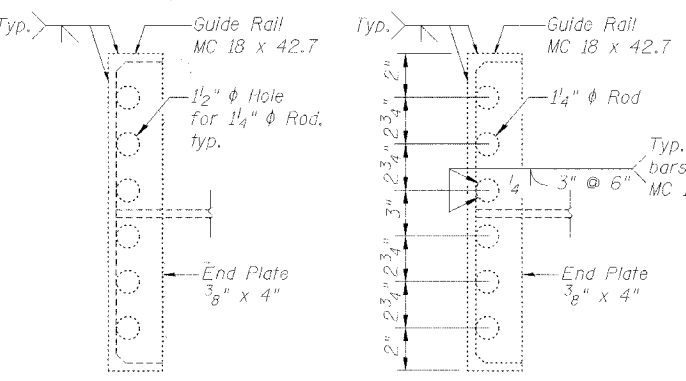
SECTION C-C



GUIDE RAIL AT EXPANSION JOINT PIER 1 AND PIER 5

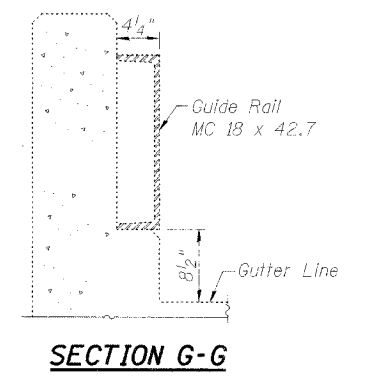


GUIDE RAIL AT EXPANSION JOINT PIER 2



SECTION D-D

SECTION E-E



SECTION G-G

NOTES

1. Remove existing Guide Rail as necessary to remove and replace Steel Grid Deck as scheduled on Sht. 10 of 15.
2. Replace in-kind Guide Rail components and anchorage which are damaged during removal and reinstallation of Guide Rail and removal and replacement of Steel Grid Deck.
3. Replace in-kind all Guide Rail and post bolts which are loosened during Guide Rail removal and replacement using new bolts.
4. Guide Rail and post details are as shown on 1985 plans.
5. Reinstall Guide Rail after Steel Grid Deck replacement. Use Guide Rail post anchorage as detailed on this sheet to attach Guide Rail posts to new Steel Grid Deck and to reattach posts to existing deck which remains.
6. Removal and installation of Guide Rail including all necessary replacement components is included in "Open Steel Floor".

DESIGNED	PJL
CHECKED	LLV
DRAWN	MGM
CHECKED	PJL

GUIDE RAILING DETAILS
F.A.P. RTE. 17 (US 52/IL 64)
OVER MISSISSIPPI RIVER
SECTION 6000 M-1
CARROLL COUNTY (IL)
JACKSON COUNTY (IA)
STRUCTURE NO. 008-6000

STS CONSULTANTS
111 NE Jefferson Ave.
Peoria, Illinois 61602
Ph (309) 676-8464
FAX (309) 676-8445
IL Design Firm Reg. No. 184-001518