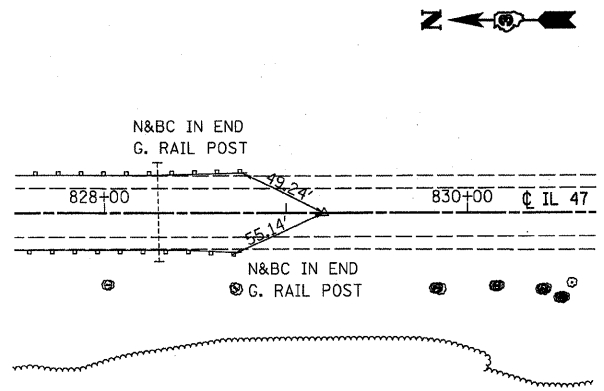
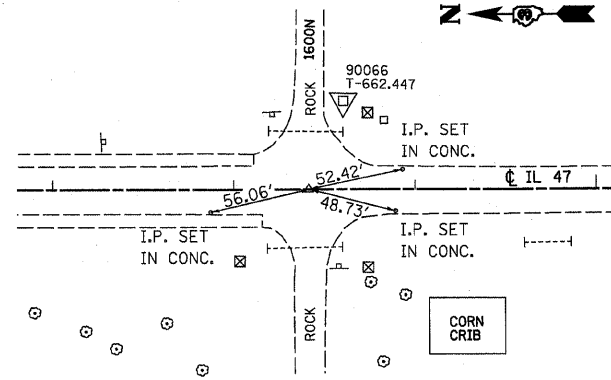


F.A.P. RTE.	SECTION	COUNTY	TOTAL SHEETS	SHEET NO.
326		LIVINGSTON	354	28

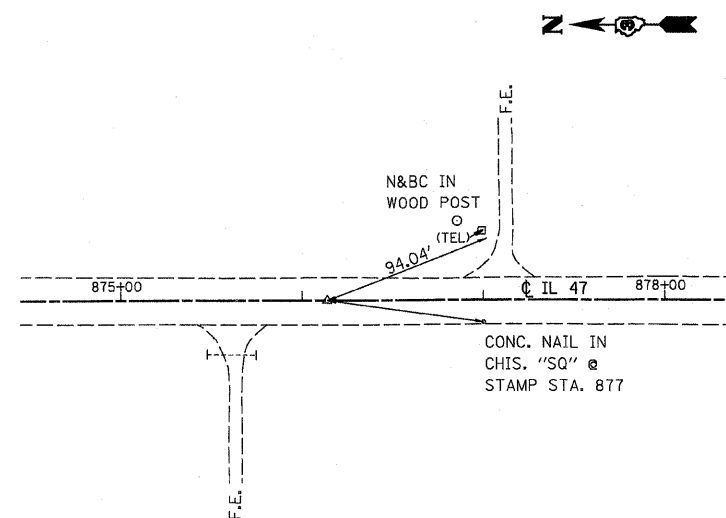
STA.	TO STA.
FED. ROAD DIST. NO.	ILLINOIS FED. AID PROJECT
• (123)123X/RS-3, (124)RS-5, (123)BR-3	



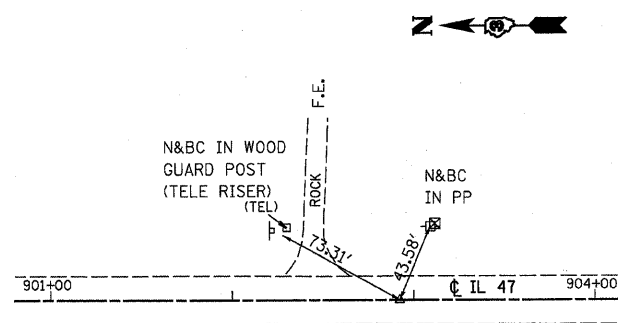
P.O.T. STA. 829+20.89
CONC. NAIL
PT.*105



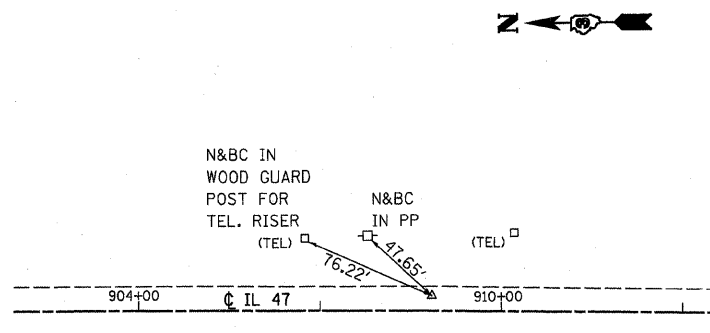
P.I. STA. 863+41.36
P.S.M.
PT.*13



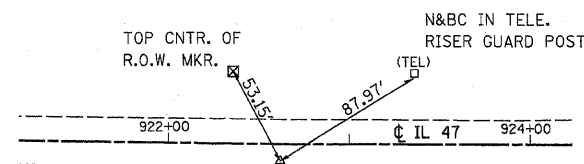
P.O.T. STA. 876+13.43
CONC. NAIL
PT.*107



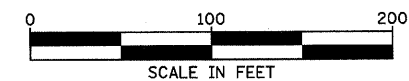
P.O.T. STA. 902+92.43
CONC. NAIL
PT.*108



P.I. STA. 909+60.75 (7.11' LT.)
CONC. NAIL
PT.*14



P.I. STA. 922+60.91 (7.07' RT.)
CONC. NAIL
PT.*15



REVISIONS	
NAME	DATE

ILLINOIS DEPARTMENT OF TRANSPORTATION

F.A.P. ROUTE 326 (IL47)
ALIGNMENT TIE SHEET
IDOT CONTROL POINTS
& BENCHMARKS

SCALE: VERT. _____
HORIZ. _____
DATE: APRIL 2004
DRAWN BY: JDQ
CHECKED BY: _____

K:\110127\apocck\ref\110127\apocck.dgn