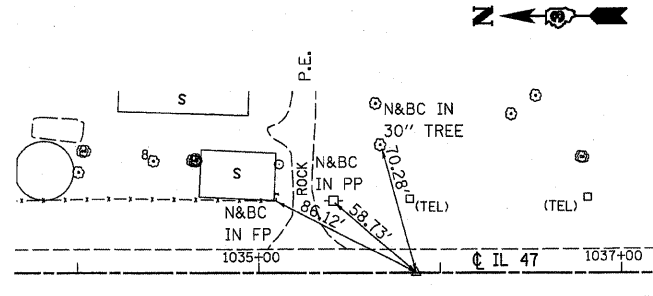
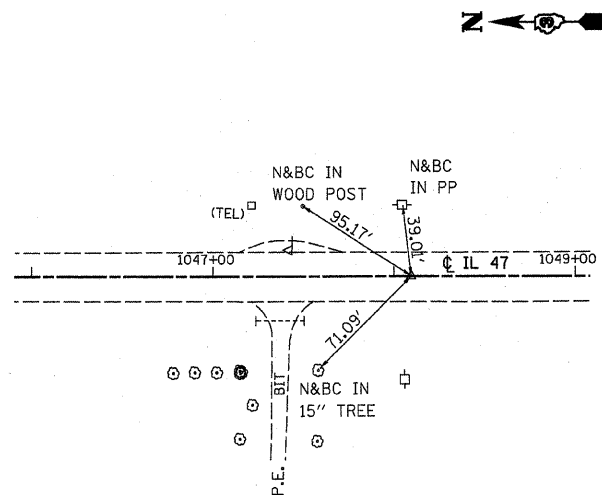


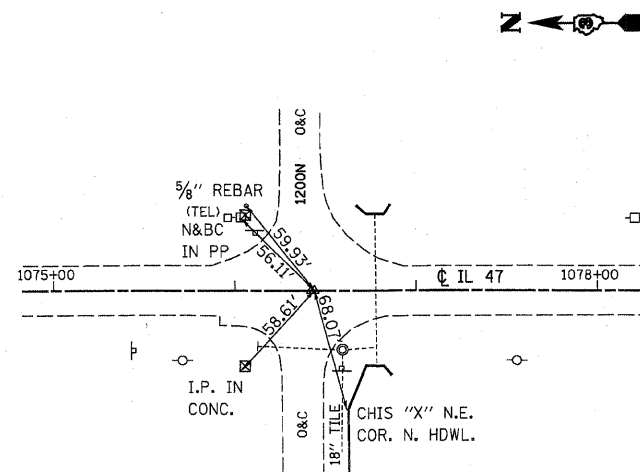
F.A.P. RTE.	SECTION	COUNTY	TOTAL SHEETS	SHEET NO.
326		LIVINGSTON	354	30
STA.		TO STA.		
FED. ROAD DIST. NO.		ILLINOIS FED. AID PROJECT		
• (123)RS-3, (124)RS-5, (123)BR-3				



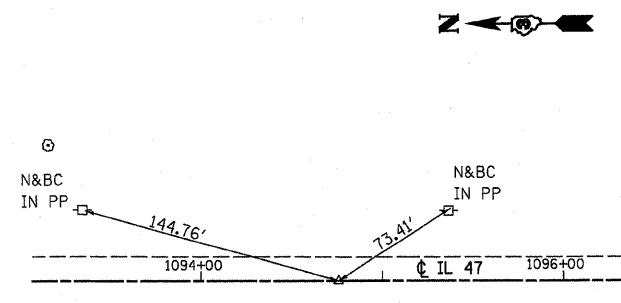
P.O.T. STA. 1035+85.35  
P.K. NAIL  
PT.#117



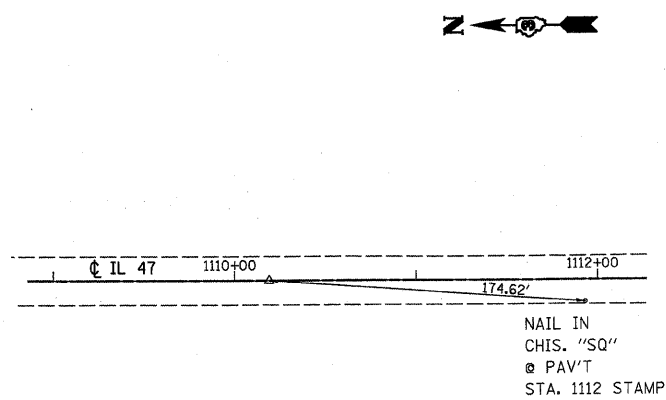
~~P.O.T. STA. 1048+09.51~~  
CONC. NAIL  
PT.#118



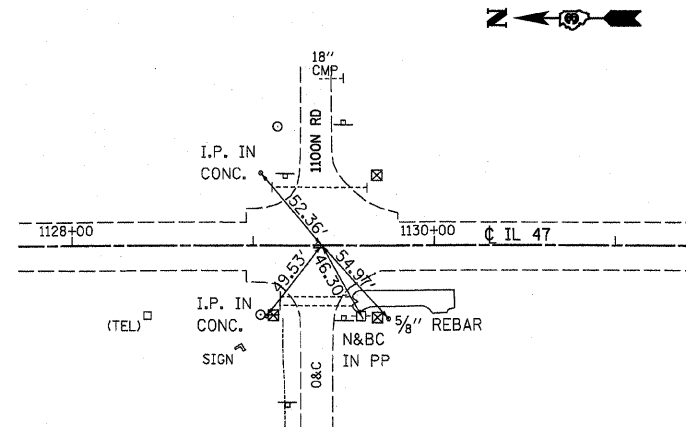
P.I. STA. 1076+42.12  
P.S.M.  
OLD PT.#19 NEW PT.#16



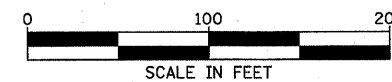
~~P.O.T. STA. 1094+76.01~~  
CONC. NAIL  
PT.#120



~~P.O.T. STA. 1110+19.08~~  
CONC. NAIL  
PT.#121



P.I. STA. 1129+35.94  
P.S.M.  
OLD PT.#20 NEW PT.#17



REVISIONS	
NAME	DATE

ILLINOIS DEPARTMENT OF TRANSPORTATION

F.A.P. ROUTE 326 (IL47)  
ALIGNMENT TIE SHEET  
IDOT CONTROL POINTS  
& BENCHMARKS

SCALE: VERT.  
HORIZ.  
DATE

DRAWN BY  
CHECKED BY