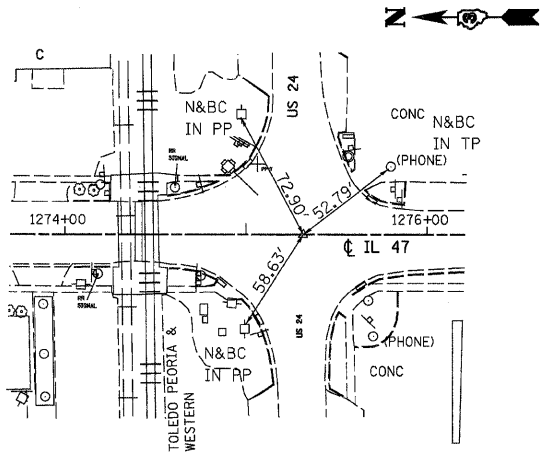
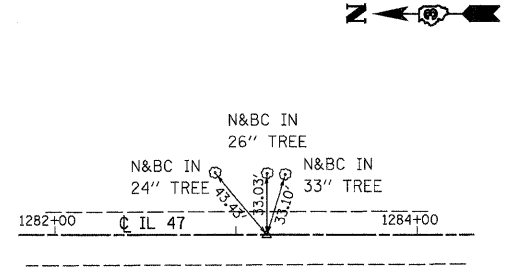


F.A.P. RTE.	SECTION	COUNTY	TOTAL SHEETS	SHEET NO.
326		LIVINGSTON	354	33
STA.		TO STA.		
FED. ROAD DIST. NO.		ILLINOIS FED. AID PROJECT		
• (123,123)XRS-3, (124)RS-5, (123)BR-3				

BENCHMARKS

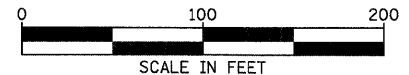


P.I. STA. 1275+28.95
CONC. NAIL
OLD PT.#131A NEW PT.#283



P.O.T. STA. 1283+14.30
CONC. NAIL
OLD PT.#133 NEW PT.#20

- BM#90 CHISLED SQUARE ON SOUTHEAST WINGWALL 25.1' LT. STA. 766+40 ELEV. 678.73
- BM#88 NAIL IN POWER POLE 39.2' LT. STA. 779+06 ELEV. 674.33
- BM#86 NAIL IN POWER POLE 38.6' LT. STA. 792+68.2 ELEV. 667.31
- BM#84 CHISLED SQUARE ON SOUTHWEST WINGWALL 18.7' RT. STA. 805+64.5 ELEV. 667.62
- BM#81 NAIL IN POWER POLE 38.3' LT. STA. 822+16.8 ELEV. 663.37
- BM#78 CHISLED SQUARE NORTH END OF WEST HEADWALL BOX CULVERT 20.3' RT. STA. 836+86.4 ELEV. 663.24
- BM#75 CHISLED SQUARE IN PAVEMENT NEAR PAVEMENT STAMP 852 11.3' RT. STA. 851+90.3 ELEV. 662.68
- BM#71 CHISLED SQUARE IN PAVEMENT NEAR PAVEMENT STAMP 872 11.9' RT. STA. 851+90 ELEV. 671.10
- BM#69 CHISLED SQUARE IN PAVEMENT NEAR PAVEMENT STAMP 882 12.1' RT. STA. 881+97 ELEV. 672.12
- BM#66 CHISLED SQUARE IN PAVEMENT NEAR PAVEMENT STAMP 897 12.2' RT. STA. 896+91.6 ELEV. 675.78
- BM#64 NAIL IN POWER POLE 40.1' LT. STA. 909+27.5 ELEV. 676.92
- BM#61 CHISLED SQUARE IN PAVEMENT NEAR PAVEMENT STAMP 932 12' RT. STA. 931+83.6 ELEV. 655.75
- BM#59 CHISELED SQUARE ON SOUTHWEST CORNER BRG. HUB GUARD 16.6' RT. STA. 950+48.1 ELEV. 655.02
- BM#55 NAIL IN POWER POLE 38.9' LT. STA. 971+95.3 ELEV. 648.77
- BM#52 NAIL IN POWER POLE 35.5' LT. STA. 988+44 ELEV. 649.46
- BM#49 NAIL IN POWER POLE 39.9' LT. STA. 1006+99 ELEV. 652.40
- BM#47 NAIL IN POWER POLE 39.6' LT. STA. 1018+87.9 ELEV. 656.59
- BM#45 NAIL IN POWER POLE 39.3' LT. STA. 1031+71 ELEV. 671.74
- BM#43 CHISLED SQUARE ON EAST HEADWALL OF BOX CULVERT 26.1' LT. STA. 1044+02 ELEV. 670.35
- BM#40 NAIL IN POWER POLE 39.4' LT. STA. 1063+03.2 ELEV. 674.75
- BM#38 CHISLED SQUARE ON WEST HEADWALL OF BOX CULVERT 42' RT. STA. 1076+81.5 ELEV. 674.27
- BM#35 NAIL IN POWER POLE 38.7' LT. STA. 1093+36.5 ELEV. 687.91
- BM#32 CHISLED SQUARE IN PAVEMENT NEAR PAVEMENT STAMP 1112 12.8' RT. STA. 1111+93.1 ELEV. 701.54
- BM#27 NAIL IN POWER POLE 38.5' RT. STA. 1138+82.1 ELEV. 720.31
- BM#24 NAIL IN FENCE POST 40.7' RT. STA. 1155+80.7 ELEV. 733.63
- BM#22 CHISLED SQUARE IN PAVEMENT NEAR PAVEMENT STAMP 1167 12.3' RT. STA. 1167+14 ELEV. 726.62
- BM#18 NAIL IN POWER POLE 39.3' RT. STA. 1188+71.1 ELEV. 728.23
- BM#17 NAIL IN POWER POLE 39.2' RT. STA. 1196+62.3 ELEV. 726.92
- BM#14 NAIL IN POWER POLE 38.6' LT. STA. 1214+21.6 ELEV. 700.43
- BM#12 NAIL IN POWER POLE 36.0' LT. STA. 1225+76.7 ELEV. 697.95
- BM#10 CHISLED "X" ON NORTHEAST BOLT, BOTTOM FLANGE FIRE HYDRANT 61' LT. STA. 1235+54 ELEV. 692.82
- BM#8 CHISLED SQUARE ON EAST SIDE CONCRETE MANHOLE 41' RT. STA. 1247+90 ELEV. 688.39
- BM#6 CHISLED "X" ON NORTHEAST BOLT, FIRE HYDRANT 24.2' RT. STA. 1256+23.1 ELEV. 691.44
- BM#3 CHISLED "X" ON NORTHEAST BOLT, FIRE HYDRANT 24.6' RT. STA. 1266+57.5 ELEV. 687.80
- BM#1 CHISLED SQUARE ON BRAKE POLE FOR SIGNAL 37.2' LT. STA. 1274+92 ELEV. 685.39



REVISIONS	
NAME	DATE

ILLINOIS DEPARTMENT OF TRANSPORTATION

F.A.P. ROUTE 326 (IL47)
ALIGNMENT TIE SHEET
IDOT CONTROL POINTS
& BENCHMARKS

SCALE: VERT. _____
HORIZ. _____
DATE _____ DRAWN BY _____
CHECKED BY _____

K:\110127\geopack\Revised\Benchmarks.dgn