

F.A.P. RTE.	SECTION	COUNTY	TOTAL SHEETS	SHEET NO.
326		LIVINGSTON	354	35
STA. 770+00		TO STA. 785+00		
FED. ROAD DIST. NO.		ILLINOIS FED. AID PROJECT		
(123,123XRS-3,(124)RS-5,(123)BR-3				

LEGEND

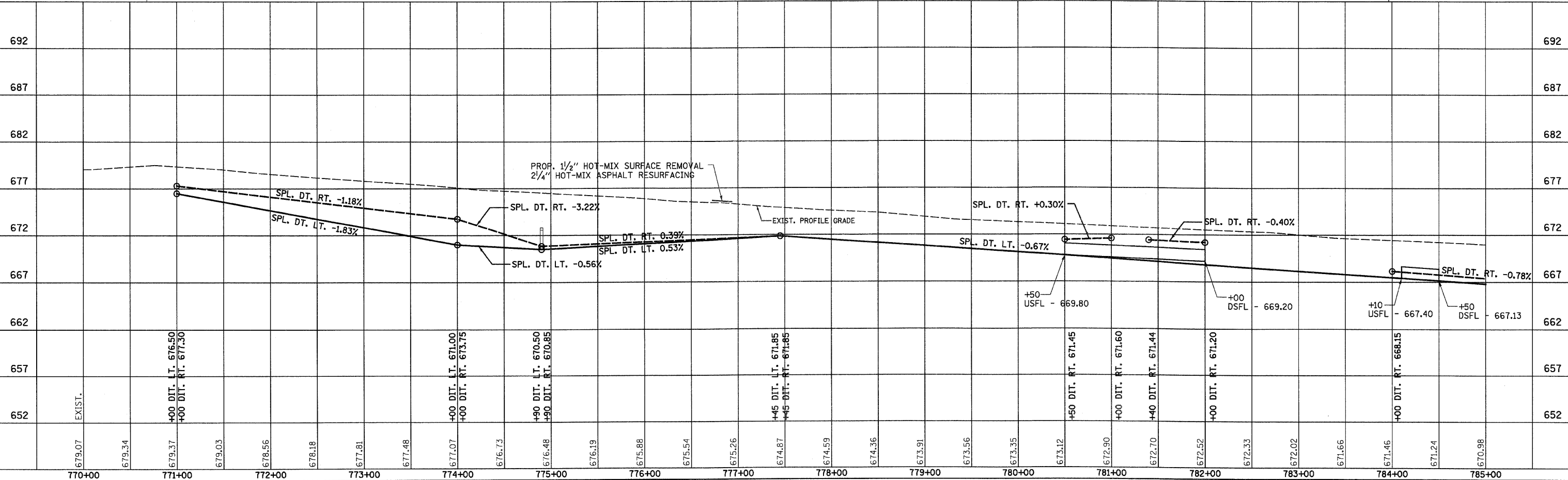
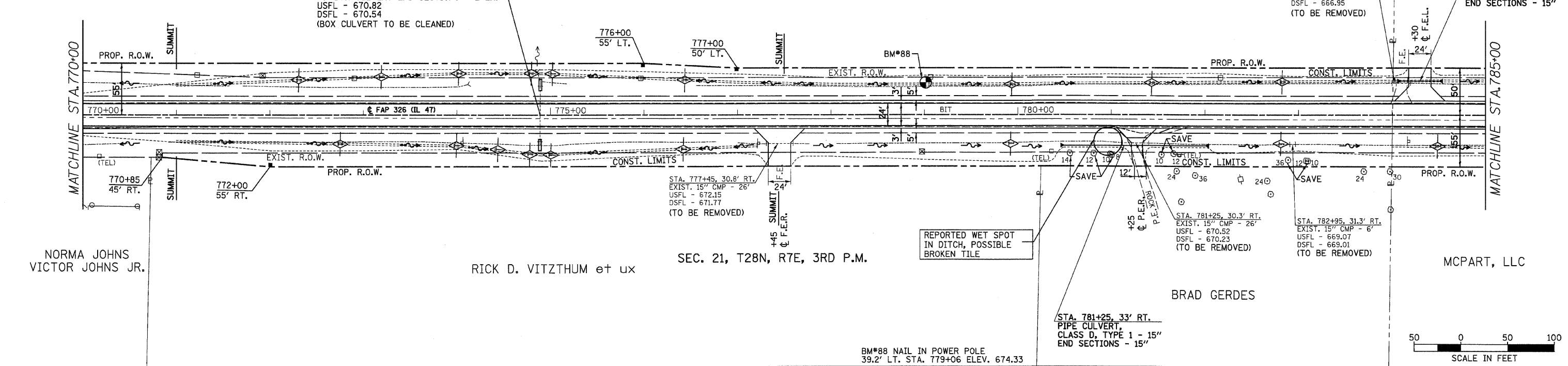
- X - TREE REMOVAL
- ▨ - PAVEMENT REMOVAL & CLASS D PATCH
- - - - - SPECIAL DITCH
- - - - - STANDARD DITCH
- ⊠ - RIPRAP
- ◇ - TEMP. DITCH CHECK

STA. 774+90
 EXIST. 3'X2' BOX - 59'
 USFL - 670.81 LT. 30'
 DSFL - 670.55 RT. 29'
 STA. 774+90
 REMOVE EXISTING END SECTIONS
 EXTEND EXISTING PCBC
 W/ PCBC 3'X2' - 6' LT. & 6' RT.
 W/ BOX CULVERT END SECTIONS - 2 EA.
 USFL - 670.82
 DSFL - 670.54
 (BOX CULVERT TO BE CLEANED)

SEC. 22, T28N, R7E, 3RD P.M.
 MARTHA VITZTHUM

CLAUDE H. WATTS, JR.
 STA. 784+10, 33.7' LT.
 EXIST. 15" RCP - 34"
 USFL - 667.45
 DSFL - 666.95
 (TO BE REMOVED)

STA. 784+30, 36' LT.
 PIPE CULVERT,
 CLASS D, TYPE 1 - 15"
 END SECTIONS - 15"



IL 47 STA. 770+00 TO STA. 785+00