

F.A.P. RTE.	SECTION	COUNTY	TOTAL SHEETS	SHEET NO.
326		LIVINGSTON	354	41
STA. 860+00		TO STA. 875+00		
FED. ROAD DIST. NO.		ILLINOIS FED. AID PROJECT		
*(123)XRS-3,(124)RS-5,(123)BR-3				

LEGEND

- X - TREE REMOVAL
- [Hatched Box] - PAVEMENT REMOVAL & CLASS D PATCH
- [Dashed Line] - SPECIAL DITCH
- [Solid Line] - STANDARD DITCH
- [Cross-hatched Box] - RIPRAP
- [Diamond] - TEMP. DITCH CHECK

R.J. LANNON, TRUSTEE

SEE FAP 326 (IL RTE. 47) & 1700 N & 1600 N INTERSECTION DETAIL SHEET AND SIDEROAD DETAIL SHEET FOR ADDITIONAL INFORMATION

THE CHILDREN OF WILLIAM GEORGE STEVENSON, DECEASED

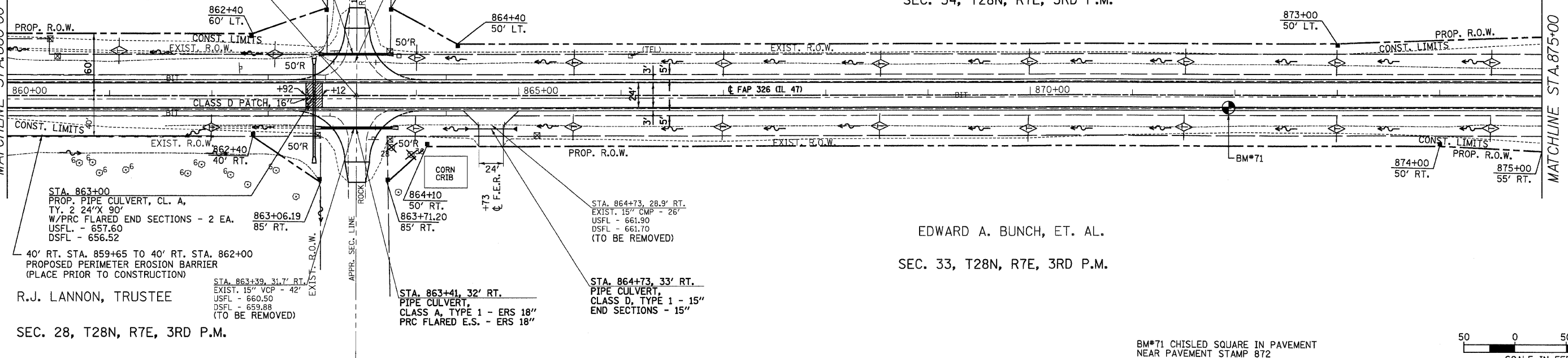
SEC. 34, T28N, R7E, 3RD P.M.

EDWARD A. BUNCH, ET. AL.

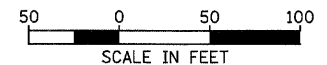
SEC. 33, T28N, R7E, 3RD P.M.

SEC. 27, T28N, R7E, 3RD P.M.

NORTH OF 1600N LT. & RT. REPORTED MULTIPLE FIELD TILE BY PROPERTY OWNER



BM#71 CHISLED SQUARE IN PAVEMENT NEAR PAVEMENT STAMP 872 11.9' RT. STA. 851+90 ELEV. 671.10

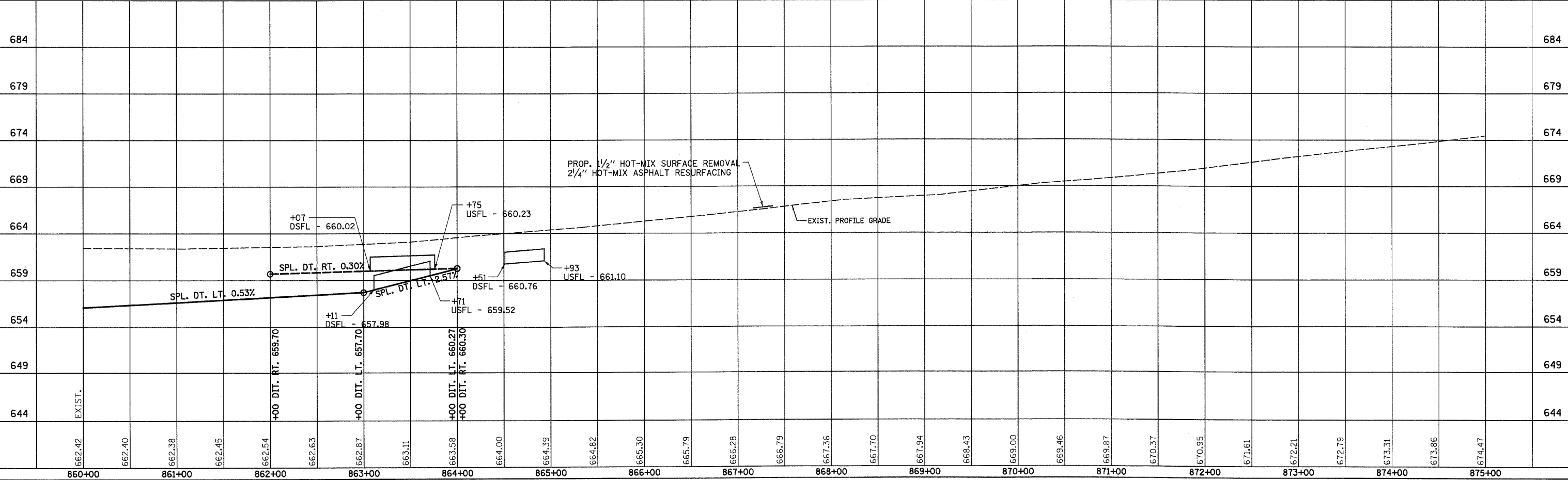


PLAN

DATE	
BY	
DESIGNED	
PLOTTED	
CHECKED	
DATE FILED	

PROFILE

DATE	
BY	
DESIGNED	
PLOTTED	
CHECKED	
DATE FILED	



IL 47 STA. 860+00 TO STA. 875+00