

F.A.P. RTE.	SECTION	COUNTY	TOTAL SHEETS	SHEET NO.
326		LIVINGSTON	354	48
STA. 965+00		TO STA. 980+00		
FED. ROAD DIST. NO.		ILLINOIS		FED. AID PROJECT
*(123,123)RS-3,(124)RS-5,(123)BR-3				

LEGEND

- X - TREE REMOVAL
- [Hatched Box] - PAVEMENT REMOVAL & CLASS D PATCH
- [Dashed Line] - SPECIAL DITCH
- [Wavy Line] - STANDARD DITCH
- [Cross-hatched Box] - RIPRAP
- [Diamond] - TEMP. DITCH CHECK

SEE FAP 326 (IL RTE. 47) & 1500 N & 1400 N INTERSECTION DETAIL SHEET AND SIDEROAD DETAIL SHEET FOR ADDITIONAL INFORMATION

SEC. 3, T27N, R7E, 3RD P.M.

RAY L. LINDLEY, ET UX

SEC. 10, T27N, R7E, 3RD P.M.

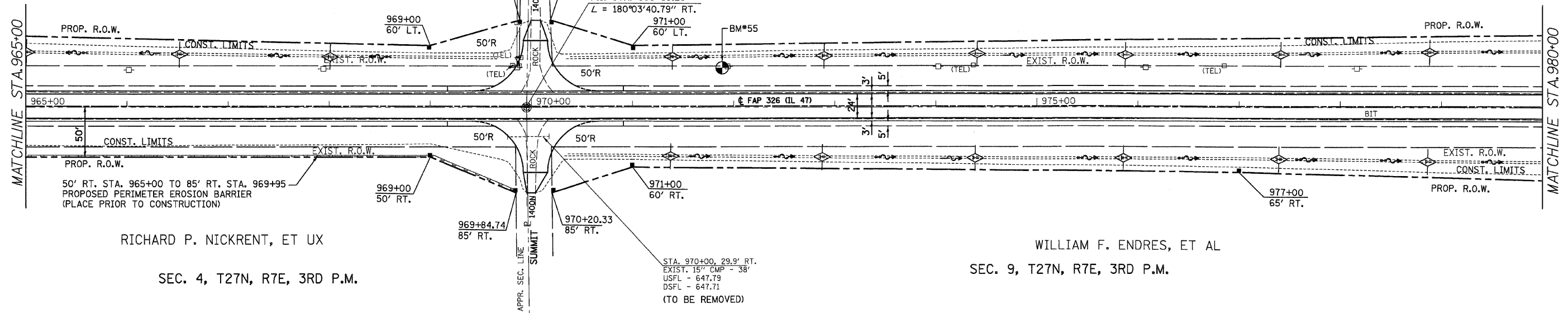
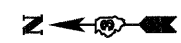
CHERYL RORK, ET AL

RICHARD P. NICKRENT, ET UX

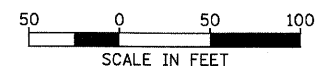
SEC. 4, T27N, R7E, 3RD P.M.

WILLIAM F. ENDRES, ET AL

SEC. 9, T27N, R7E, 3RD P.M.



BM#55 NAIL IN POWER POLE
38.9' LT. STA. 971+95.3 ELEV. 648.77



PLAN

DATE	
BY	
REVISIONS	
NO. 1	
NO. 2	
NO. 3	
NO. 4	
NO. 5	
NO. 6	
NO. 7	
NO. 8	
NO. 9	
NO. 10	

PROFILE

DATE	
BY	
REVISIONS	
NO. 1	
NO. 2	
NO. 3	
NO. 4	
NO. 5	
NO. 6	
NO. 7	
NO. 8	
NO. 9	
NO. 10	

