

F.A.P. RTE.	SECTION	COUNTY	TOTAL SHEETS	SHEET NO.
326		LIVINGSTON	354	55
STA. 1070+00		TO STA. 1085+00		
FED. ROAD DIST. NO.		ILLINOIS FED. AID PROJECT		
*(123,123)ORS-3,(124)RS-5,(123)BR-3				

LEGEND

- X - TREE REMOVAL
- [Hatched Box] - PAVEMENT REMOVAL & CLASS D PATCH
- [Dashed Line] - SPECIAL DITCH
- [Solid Line] - STANDARD DITCH
- [Cross-hatched Box] - RIPRAP
- [Diamond] - TEMP. DITCH CHECK

SEE FAP 326 (IL RTE. 47) & 1200 N & 1100 N INTERSECTION DETAIL SHEET AND SIDEROAD DETAIL SHEET FOR ADDITIONAL INFORMATION

STA. 1083+04.5
 EXIST. 10" CLAY
 USFL - 672.08
 DSFL - UNKNOWN

REPORTED FIELD TILE
 REMOVE 24" EX. PIPE CULVERT
 PLUG WITH MASONRY
 SEE DISTRICT STANDARD FOR DETAILS

STA. 1083+04.5
 EXIST. 45"X28" ELLIP. CONC. PIPE - 47'
 USFL - 675.24 RT. 22'
 DSFL - 674.97 LT. 25'

STA. 1083+04.5
 REMOVE EXISTING CONCRETE PIPE, ERS 36"
 REPLACE WITH PIPE CULVERTS, CLASS A, TYPE 2 42" - 62" W/PRC FLARED END SECTIONS 42" - 2 EA.
 USFL - 671.91
 DSFL - 671.60

SEC. 15, T27N, R7E, 3RD P.M.

BETTY LOU KIBORT, TRUSTEE

SEC. 22, T27N, R7E, 3RD P.M.

JANET K. MILLER, TRUSTEE

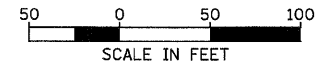
RALPH HARMS

SEC. 16, T27N, R7E, 3RD P.M.

JAMES B. GULLIFORD, ET AL

LEAH LENA MAURER, LIFE ESTATE

SEC. 21, T27N, R7E, 3RD P.M.

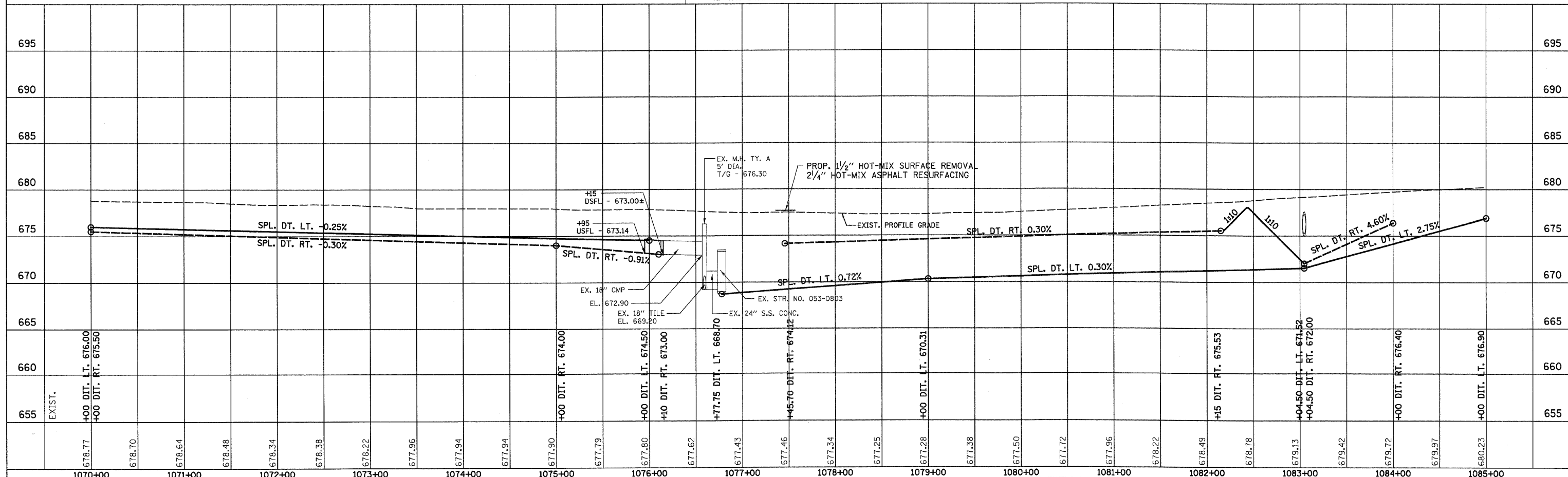


PLAN

DATE	
BY	
REVISIONS	
NO. 1	
NO. 2	
NO. 3	
NO. 4	
NO. 5	

PROFILE

DATE	
BY	
REVISIONS	
NO. 1	
NO. 2	
NO. 3	
NO. 4	
NO. 5	



IL 47 STA. 1070+00 TO STA. 1085+00