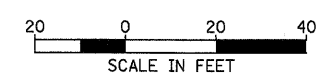
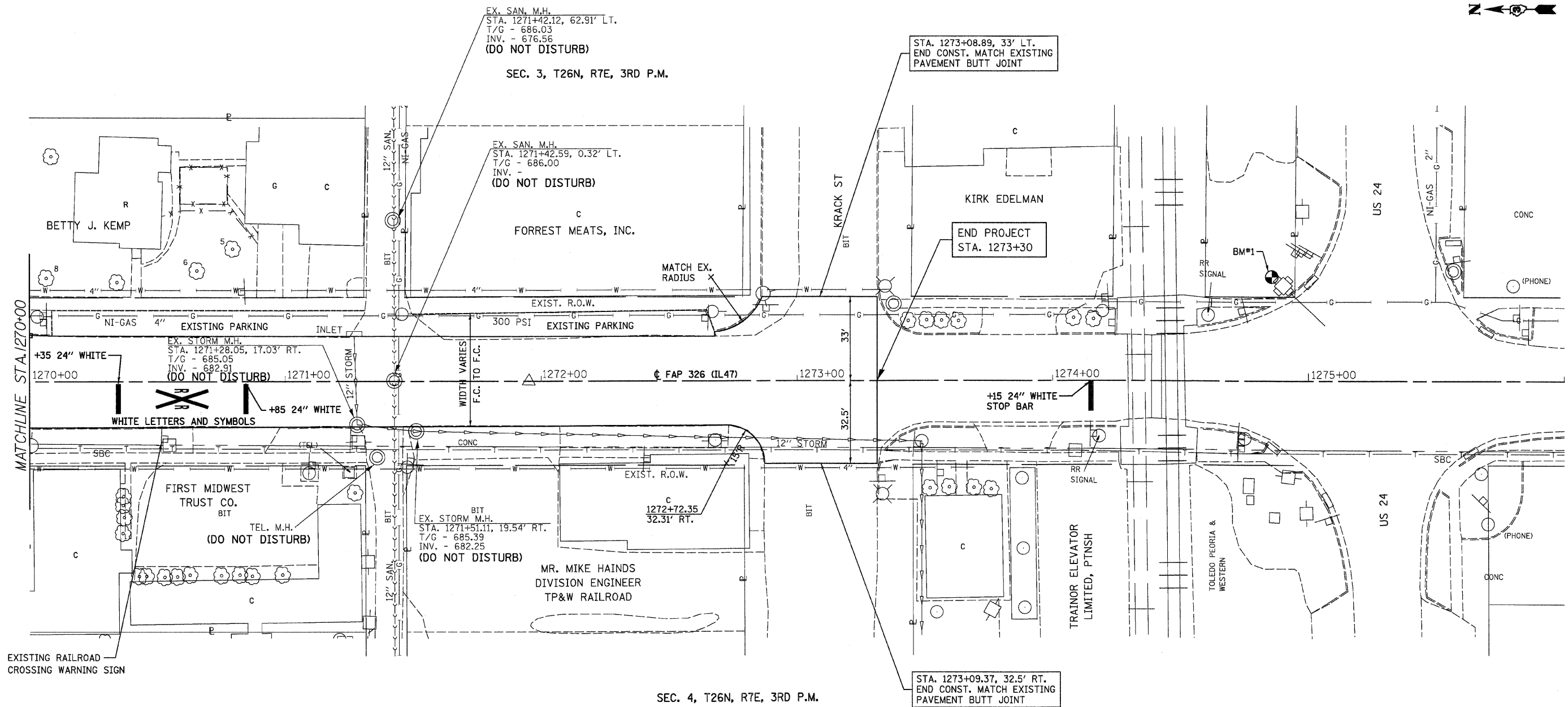
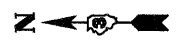


F.A.P. RTE.	SECTION	COUNTY	TOTAL SHEETS	SHEET NO.
326		LIVINGSTON	354	78
STA. 1270+00		TO STA. 1276+00		
FED. ROAD DIST. NO.		ILLINOIS FED. AID PROJECT		
*(123,123)RS-3,(124)RS-5,(123)BR-3				

**LEGEND**

- X - TREE REMOVAL
- [Hatched Box] - PAVEMENT REMOVAL & CLASS D PATCH
- [Dashed Line] - SPECIAL DITCH
- [Wavy Line] - STANDARD DITCH
- [Cross-hatched Box] - RIPRAP
- [Diamond with X] - TEMP. DITCH CHECK



REVISIONS	
NAME	DATE

ILLINOIS DEPARTMENT OF TRANSPORTATION

IL 47  
STA. 1270+00 TO STA. 1276+00

SCALE: VERT.  
HORIZ.  
DATE

DRAWN BY  
CHECKED BY

BM#1 CHISLED SQUARE ON BRAKE  
POLE FOR SIGNAL  
37.2' LT. STA. 1274+92 ELEV. 685.39

kv110127/060601/PlanSheet20.dgn