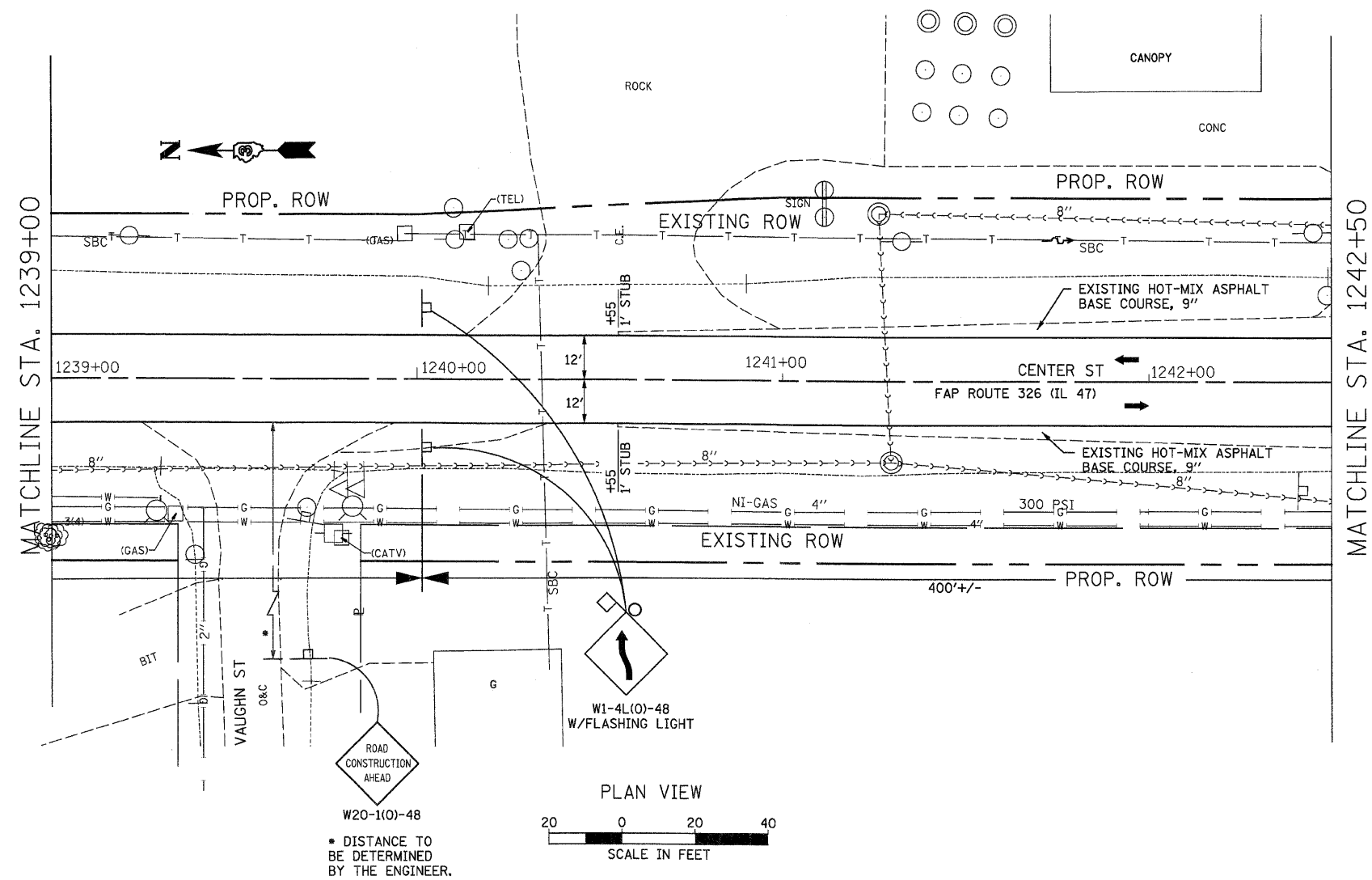
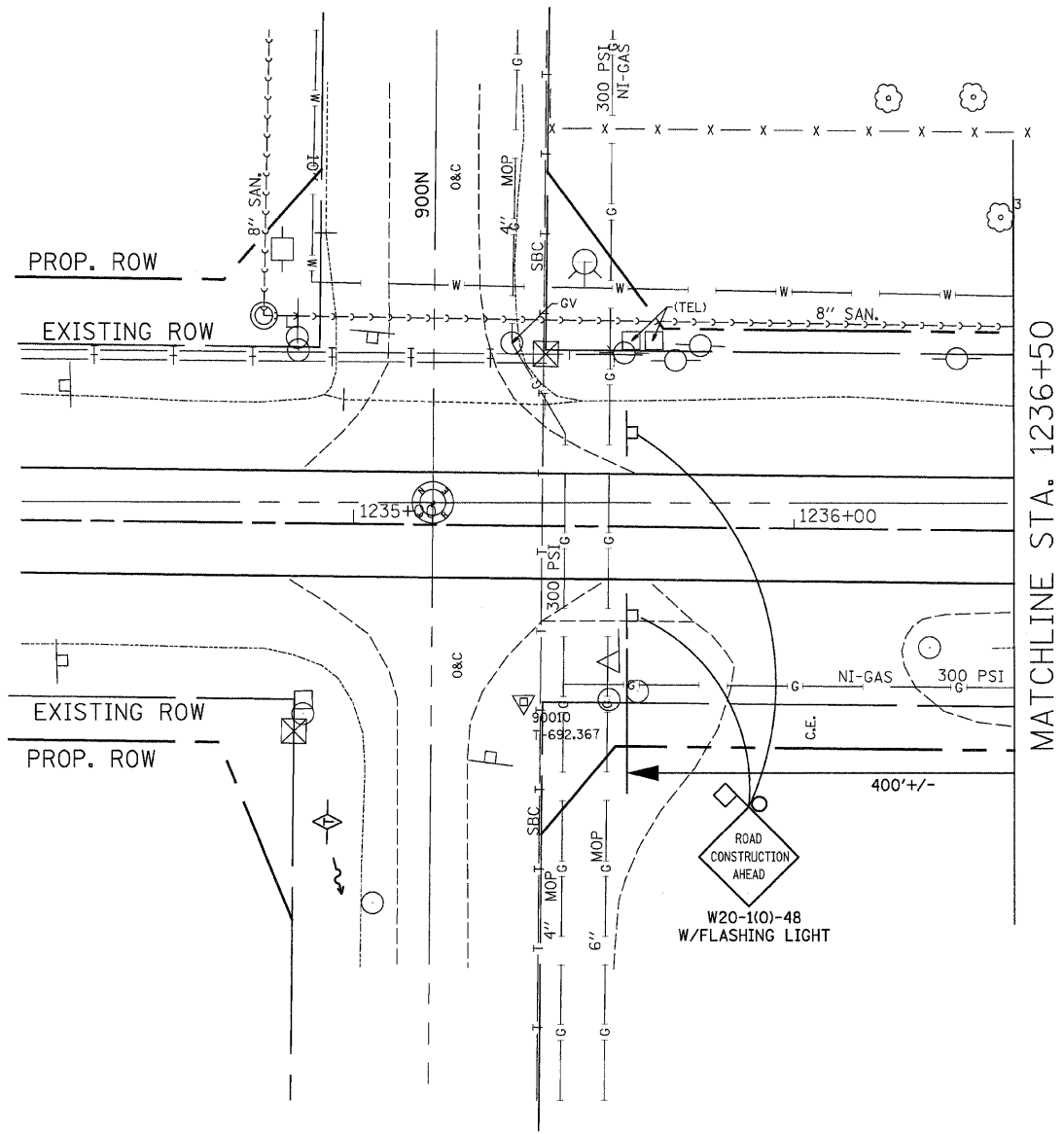


F.A.P. RTE.	SECTION	COUNTY	TOTAL SHEETS	SHEET NO.
326		LIVINGSTON	354	92
STA. TO STA.		ILLINOIS FED. AID PROJECT		
		*123,123XRS-3,(124)RS-5,(123)BR-3		

EXIST. CURVE EXCL-5
 PI STA. = 1241+73.46
 $\Delta = 1^\circ 07' 50''$ (LT)
 $D = 0^\circ 07' 53''$
 $R = 43,56872'$
 $T = 429.83$
 $L = 859.64'$
 $E = 2.12'$
 $e = N.C.$
 P.C. STA. = 1237+43.62
 P.T. STA. = 1246+03.26



REVISIONS		ILLINOIS DEPARTMENT OF TRANSPORTATION
NAME	DATE	
		TRAFFIC CONTROL AND PROTECTION (SPECIAL) STATION 1245+85 STAGE II CONSTRUCTION PLANS

SCALE: VERT. HORIZ.
 DATE: DRAWN BY: CHECKED BY: