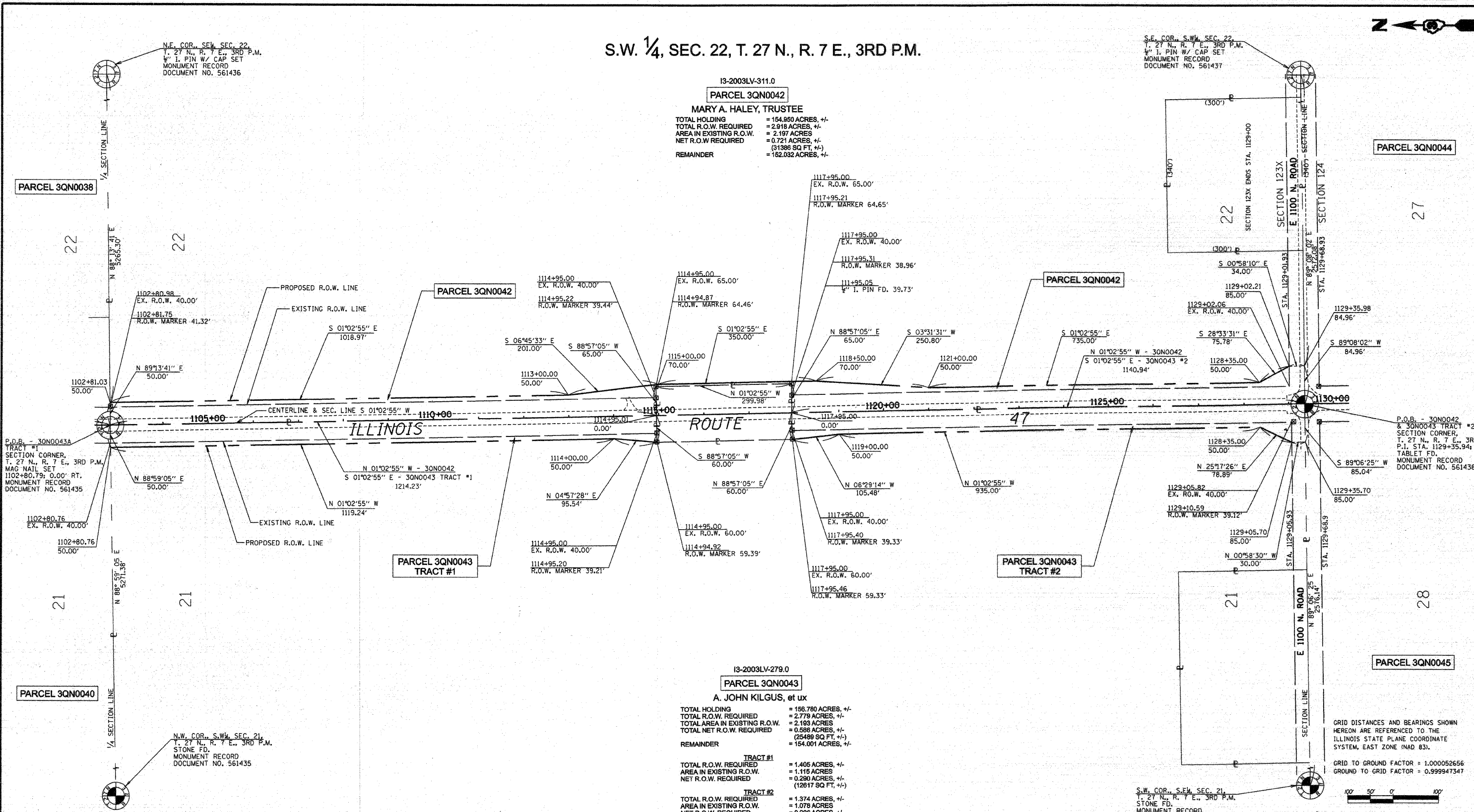


S.W. 1/4, SEC. 22, T. 27 N., R. 7 E., 3RD P.M.



13-2003LV-311.0
PARCEL 3QN0042
 MARY A. HALEY, TRUSTEE
 TOTAL HOLDING = 154.950 ACRES, +/-
 TOTAL R.O.W. REQUIRED = 2.918 ACRES, +/-
 AREA IN EXISTING R.O.W. = 2.197 ACRES
 NET R.O.W. REQUIRED = 0.721 ACRES, +/-
 (31386 SQ. FT., +/-)
 REMAINDER = 152.032 ACRES, +/-

13-2003LV-279.0
PARCEL 3QN0043
 A. JOHN KILGUS, et ux
 TOTAL HOLDING = 156.780 ACRES, +/-
 TOTAL R.O.W. REQUIRED = 2.778 ACRES, +/-
 TOTAL AREA IN EXISTING R.O.W. = 2.183 ACRES
 TOTAL NET R.O.W. REQUIRED = 0.598 ACRES, +/-
 (25489 SQ. FT., +/-)
 REMAINDER = 154.001 ACRES, +/-
 TRACT #1
 TOTAL R.O.W. REQUIRED = 1.405 ACRES, +/-
 AREA IN EXISTING R.O.W. = 1.115 ACRES
 NET R.O.W. REQUIRED = 0.290 ACRES, +/-
 (12817 SQ. FT., +/-)
 TRACT #2
 TOTAL R.O.W. REQUIRED = 1.374 ACRES, +/-
 AREA IN EXISTING R.O.W. = 1.078 ACRES
 NET R.O.W. REQUIRED = 0.298 ACRES, +/-
 (12872 SQ. FT., +/-)

P.O.B. - 30N0043A
 TRACT #1
 SECTION CORNER,
 T. 27 N., R. 7 E., 3RD P.M.
 MAG NAIL SET
 1102+80.79; 0.00' RT.
 MONUMENT RECORD
 DOCUMENT NO. 561435

P.O.B. - 30N0042
 & 30N0043 TRACT #2
 SECTION CORNER,
 T. 27 N., R. 7 E., 3RD P.M.
 P.I. STA. 1129+35.94; 0.00' RT.
 TABLET FD.
 MONUMENT RECORD
 DOCUMENT NO. 561438

N.E. COR., S.W. SEC. 22,
 T. 27 N., R. 7 E., 3RD P.M.
 1/4" I. PIN W/ CAP SET
 MONUMENT RECORD
 DOCUMENT NO. 561436

S.E. COR., S.W. SEC. 22,
 T. 27 N., R. 7 E., 3RD P.M.
 1/4" I. PIN W/ CAP SET
 MONUMENT RECORD
 DOCUMENT NO. 561437

N.W. COR., S.W. SEC. 21,
 T. 27 N., R. 7 E., 3RD P.M.
 STONE FD.
 MONUMENT RECORD
 DOCUMENT NO. 561435

S.W. COR., S.W. SEC. 21,
 T. 27 N., R. 7 E., 3RD P.M.
 STONE FD.
 MONUMENT RECORD
 DOCUMENT NO. 561435

I, MICHAEL E. RAPIER, HEREBY CERTIFY THAT I AM A LICENSED PROFESSIONAL LAND SURVEYOR OF THE STATE OF ILLINOIS, THAT THE SURVEY OF FAP 326 (IL ROUTE 47) WAS MADE BY MICHAEL E. RAPIER SURVEYING, INC. UNDER MY DIRECTION, AND THAT THIS PLAT IS A CORRECT REPRESENTATION OF SAID SURVEY TO THE BEST OF MY KNOWLEDGE AND BELIEF, THAT ALL MONUMENTS AND MARKS ARE OF THE CHARACTER AND OCCUPY THE POSITION SHOWN THEREON AND ARE SUFFICIENT TO ENABLE THE SURVEY TO BE RETRACED.

"THIS PROFESSIONAL SERVICE CONFORMS TO THE CURRENT ILLINOIS MINIMUM STANDARDS FOR A BOUNDARY SURVEY"
 MICHAEL E. RAPIER
 2917 SPRINGFIELD, ILLINOIS
 8-29-2006
 ILLINOIS PROFESSIONAL LAND SURVEYOR NO. 2817
 EXPIRES: NOV. 30, 2008



S.E. 1/4, SEC. 21, T. 27 N., R. 7 E., 3RD P.M.

GRID DISTANCES AND BEARINGS SHOWN HEREON ARE REFERENCED TO THE ILLINOIS STATE PLANE COORDINATE SYSTEM, EAST ZONE (NAD 83).

GRID TO GROUND FACTOR = 1.000052656
 GROUND TO GRID FACTOR = 0.999947347

RIGHT OF WAY PLANS

ROUTE: F.A.P. 326 (IL ROUTE 47)
 SECTION: (123,123X)RS-3, (124)RS-5 & (123)BR-3
 PROJECT:
 COUNTY: LIVINGSTON
 JOB NO.: R-93-003-01
 STA. 1102+80.79 TO STA. 1129+35.94
 SCALE 1" = 100'

SHEET NO. 14 OF 23