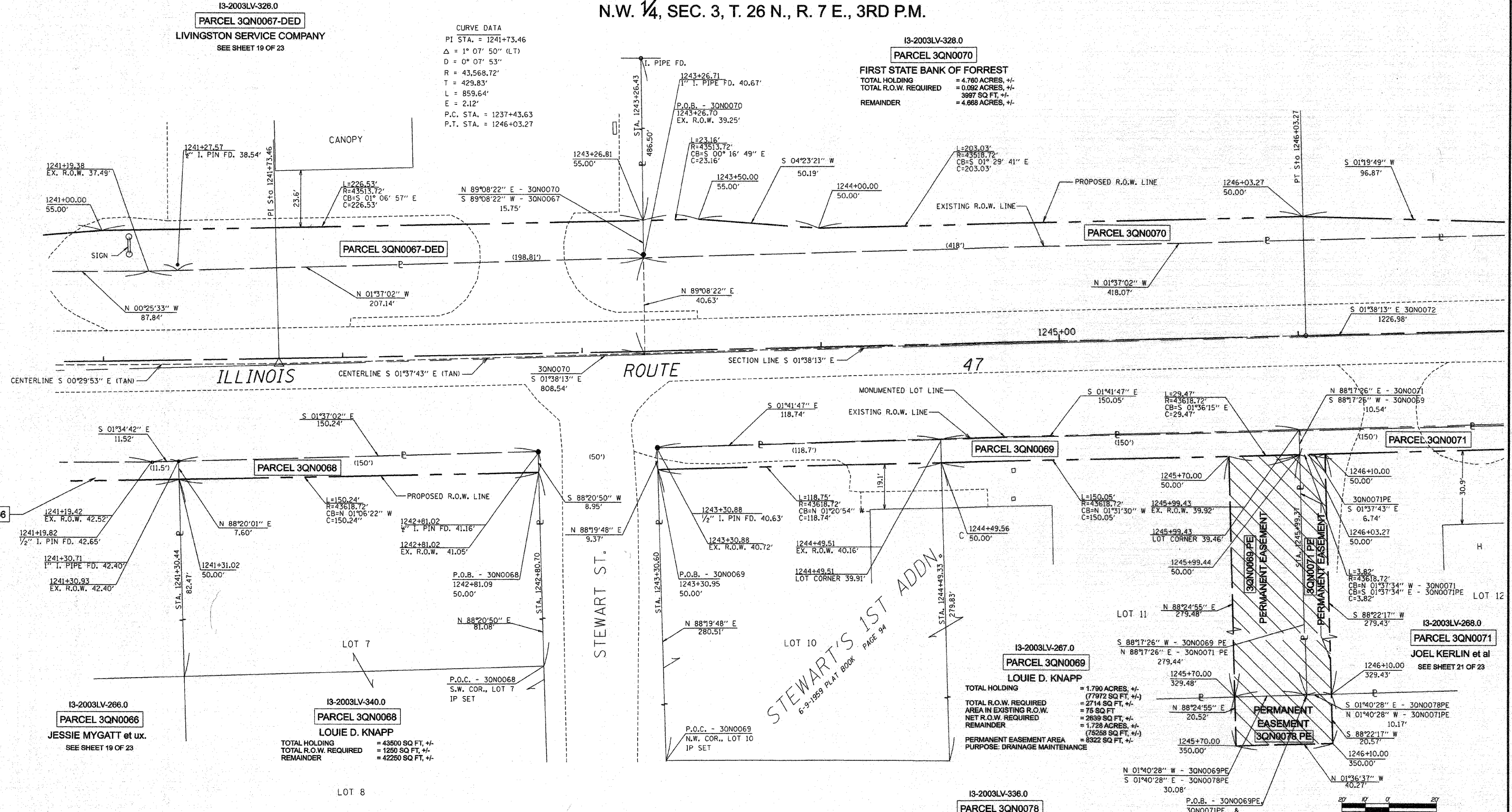




N.W. 1/4, SEC. 3, T. 26 N., R. 7 E., 3RD P.M.



CURVE DATA
PI STA. = 1241+73.46
Δ = 1° 07' 50" (LT)
D = 0° 07' 53"
R = 43,568.72'
T = 429.83'
L = 859.64'
E = 2.12'
P.C. STA. = 1237+43.63
P.T. STA. = 1246+03.27

13-2003LV-326.0
PARCEL 3QN0070
FIRST STATE BANK OF FORREST
TOTAL HOLDING = 4.760 ACRES, +/-
TOTAL R.O.W. REQUIRED = 0.082 ACRES, +/-
REMAINDER = 3997 SQ. FT., +/-
= 4.668 ACRES, +/-

13-2003LV-326.0
PARCEL 3QN0067-DED
LIVINGSTON SERVICE COMPANY
SEE SHEET 19 OF 23

13-2003LV-266.0
PARCEL 3QN0066
JESSIE MYGATT et ux.
SEE SHEET 19 OF 23

13-2003LV-340.0
PARCEL 3QN0068
LOUIE D. KNAPP
TOTAL HOLDING = 43500 SQ. FT., +/-
TOTAL R.O.W. REQUIRED = 1250 SQ. FT., +/-
REMAINDER = 42260 SQ. FT., +/-

13-2003LV-267.0
PARCEL 3QN0069
LOUIE D. KNAPP
TOTAL HOLDING = 1.790 ACRES, +/-
(77972 SQ. FT., +/-)
TOTAL R.O.W. REQUIRED = 2714 SQ. FT., +/-
NET R.O.W. REQUIRED = 75 SQ. FT., +/-
REMAINDER = 2639 SQ. FT., +/-
PERMANENT EASEMENT AREA = 1.728 ACRES, +/-
PURPOSE: DRAINAGE MAINTENANCE = 78288 SQ. FT., +/-

13-2003LV-268.0
PARCEL 3QN0071
JOEL KERLIN et al
SEE SHEET 21 OF 23

13-2003LV-336.0
PARCEL 3QN0078
PRAIRIE CENTRAL C.U.S.D. #8
TOTAL HOLDING = 26.250 ACRES, +/-
PERMANENT EASEMENT AREA = 827 SQ. FT., +/-
PURPOSE: DRAINAGE MAINTENANCE

I, MICHAEL E. RAPIER, HEREBY CERTIFY THAT I AM A LICENSED PROFESSIONAL LAND SURVEYOR OF THE STATE OF ILLINOIS, THAT THE SURVEY OF FAP 326 (IL ROUTE 47) WAS MADE BY MICHAEL E. RAPIER SURVEYING, INC. UNDER MY DIRECTION, AND THAT THIS PLAT IS A CORRECT REPRESENTATION OF SAID SURVEY TO THE BEST OF MY KNOWLEDGE AND BELIEF, THAT ALL MONUMENTS AND MARKS ARE OF THE CHARACTER AND OCCUPY THE POSITION SHOWN THEREON AND ARE SUFFICIENT TO ENABLE THE SURVEY TO BE RETRACED.

"THIS PROFESSIONAL SERVICE CONFORMS TO THE CURRENT ILLINOIS MINIMUM STANDARDS FOR A BOUNDARY SURVEY"
MICHAEL E. RAPIER
2917 SPRINGFIELD, ILLINOIS
8-29-2006
ILLINOIS PROFESSIONAL LAND SURVEYOR NO. 2917
EXPIRES: NOV. 30, 2006



N.E. 1/4, SEC. 4, T. 26 N., R. 7 E., 3RD P.M.

GRID DISTANCES AND BEARINGS SHOWN HEREON ARE REFERENCED TO THE ILLINOIS STATE PLANE COORDINATE SYSTEM, EAST ZONE (NAD 83).
GRID TO GROUND FACTOR = 1.000052656
GROUND TO GRID FACTOR = 0.999947344

RIGHT OF WAY PLANS
ROUTE: F.A.P. 326 (IL ROUTE 47)
SECTION: (123,123X)RS-3, (124)RS-5 & (123)BR-3
PROJECT:
COUNTY: LIVINGSTON
JOB NO.: R-93-003-01
STA. 1241+00 TO STA. 1246+00
SCALE 1" = 20'
SHEET NO. 20 OF 23