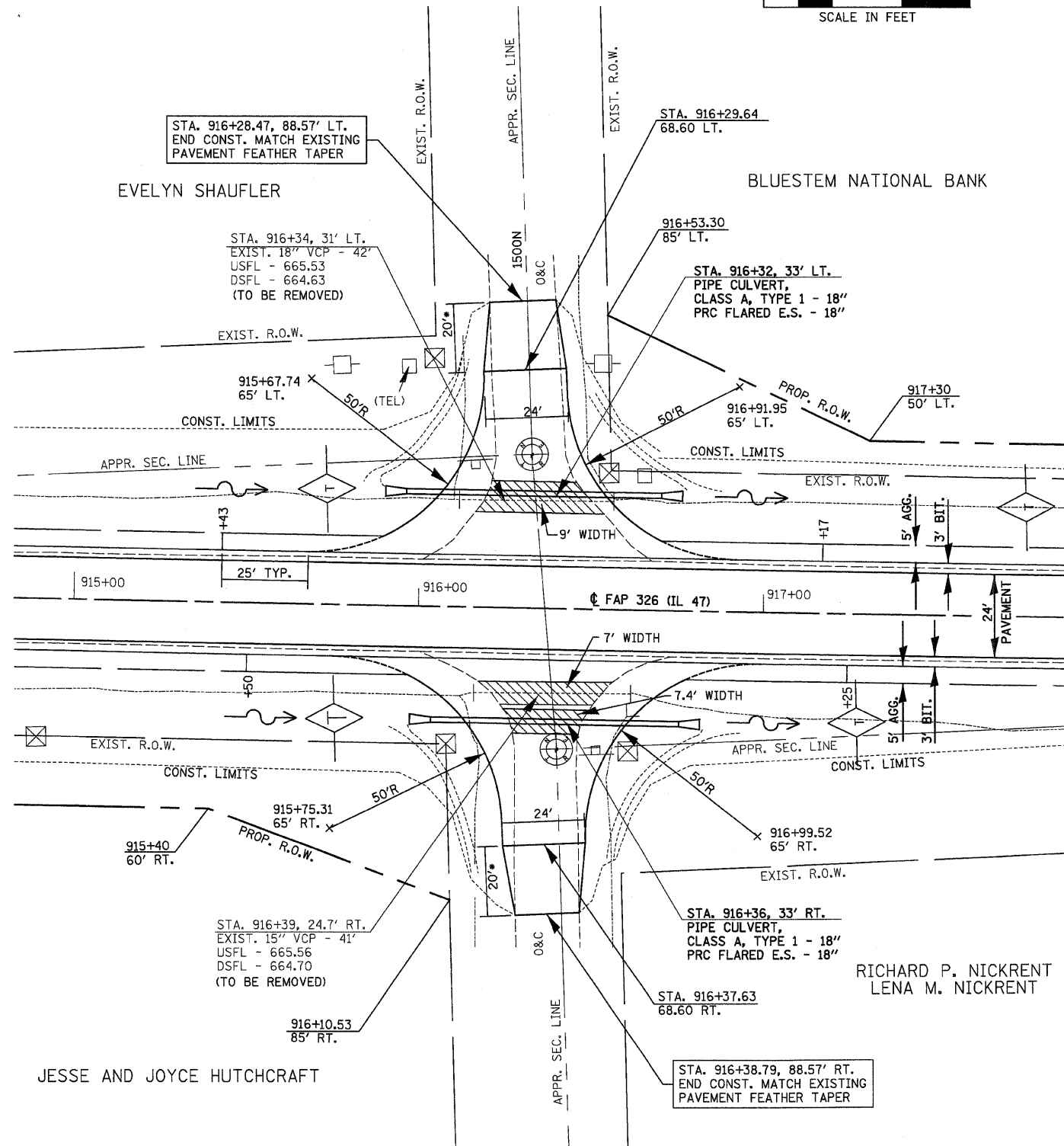
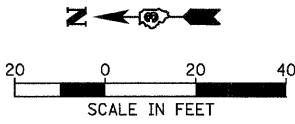


F.A.P. RTE.	SECTION	COUNTY	TOTAL SHEETS	SHEET NO.
326	*	LIVINGSTON	354	119
STA. TO STA.				
FED. ROAD DIST. NO. ILLINOIS FED. AID PROJECT				
*(123,123)RS-3,(124)RS-5,(123)BR-3				

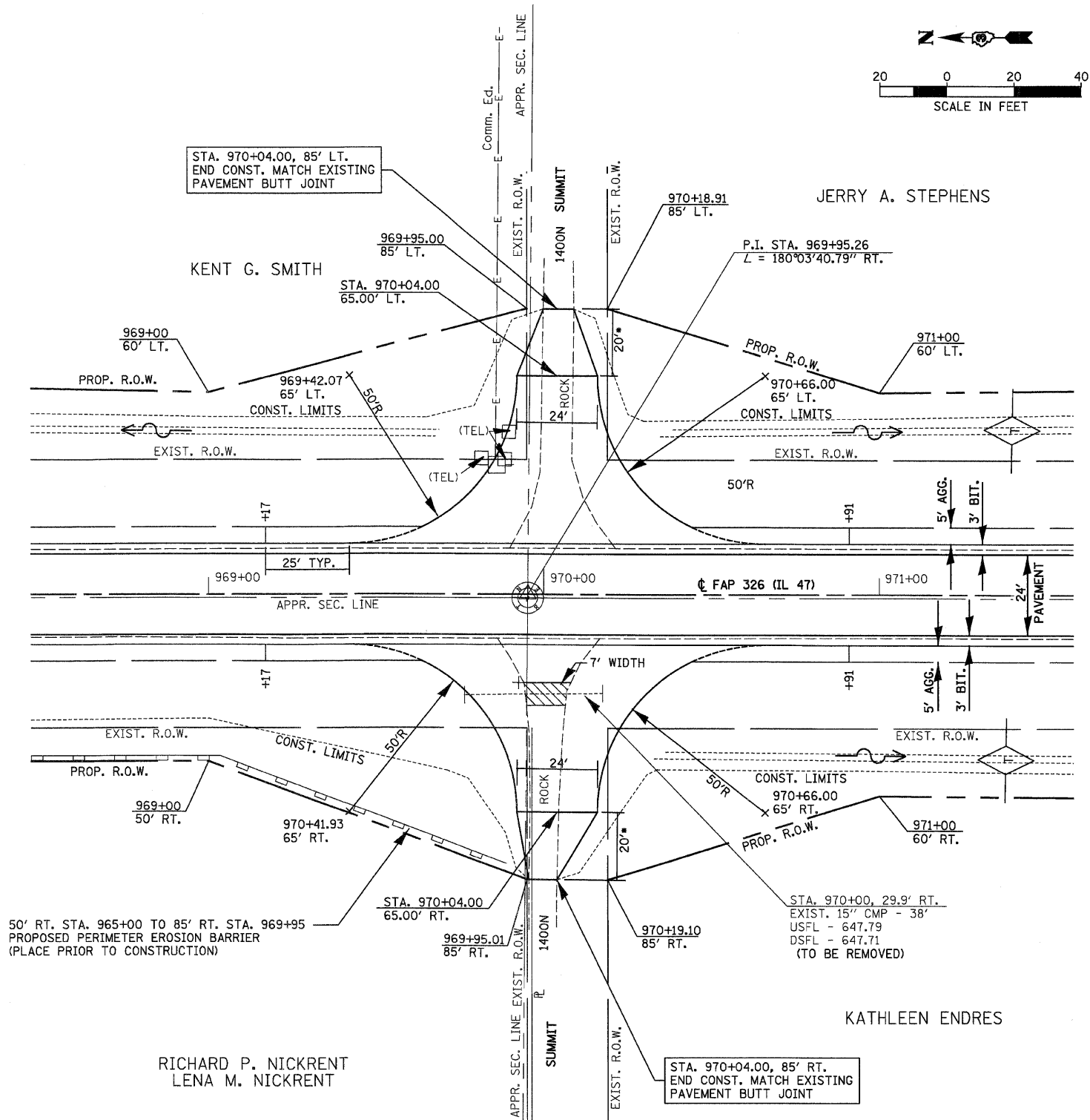
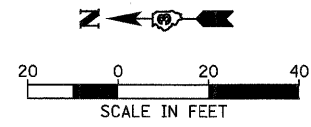
CLASS D PATCHES, 6 INCH OR AGGREGATE BASE CSE., TY. A 8" (SEE SIDEROAD DETAIL)



STA. 916+33.63
FAP RTE. 326 (IL. RTE. 47) &
1500 N ROAD
INTERSECTION DETAILS

• SEE SIDEROAD DETAILS

CLASS D PATCHES, 6 INCH OR AGGREGATE BASE CSE., TY. A 8" (SEE SIDEROAD DETAIL)



STA. 970+04.00
FAP RTE. 326 (IL. RTE. 47) &
1400 N ROAD
INTERSECTION DETAILS

REVISIONS	
NAME	DATE

ILLINOIS DEPARTMENT OF TRANSPORTATION
INTERSECTION DETAILS
FAP 326 (IL RTE. 47) &
1500 N & 1400 N

SCALE: VERT. HORIZ.
DATE DRAWN BY CHECKED BY