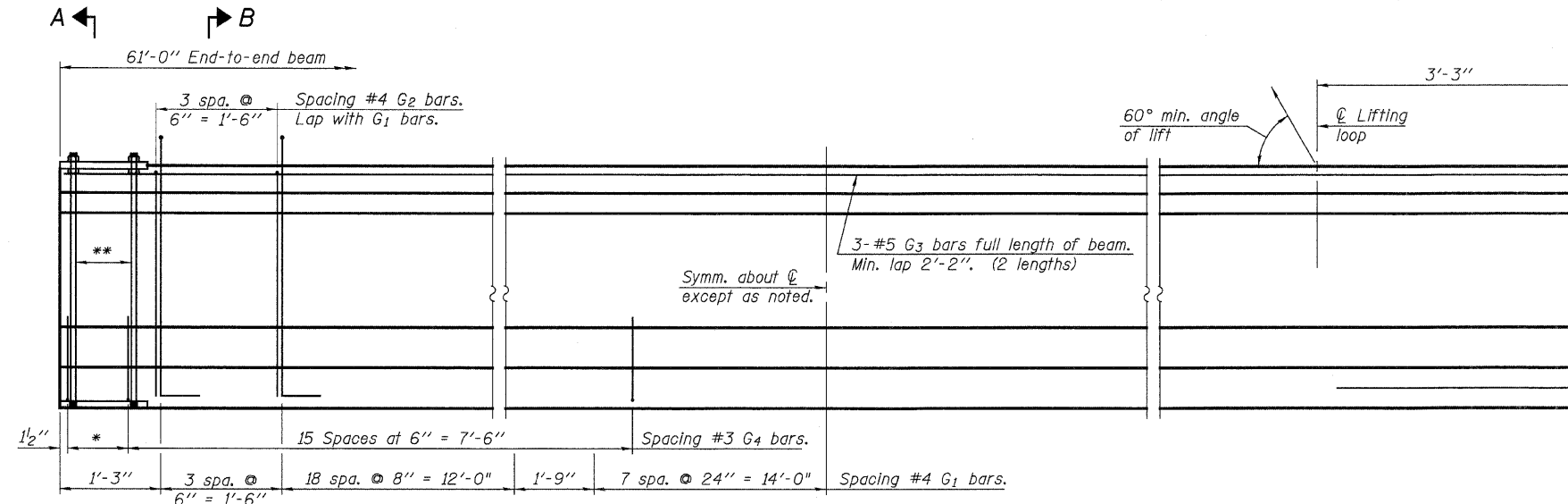


STATE OF ILLINOIS
DEPARTMENT OF TRANSPORTATION

SHEET 9
OF 18

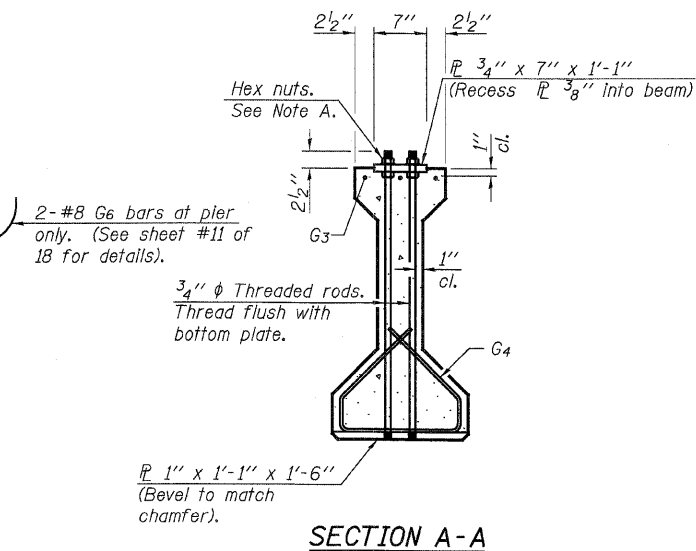
F.A.P. RTE.	SECTION	COUNTY	TOTAL SHEETS	SHEET NO.
326	(123)BR-3	LIVINGSTON	354	131
FED. ROAD DIST. NO.	ILLINOIS	FED. AID PROJECT	CONTRACT NO. 66601	



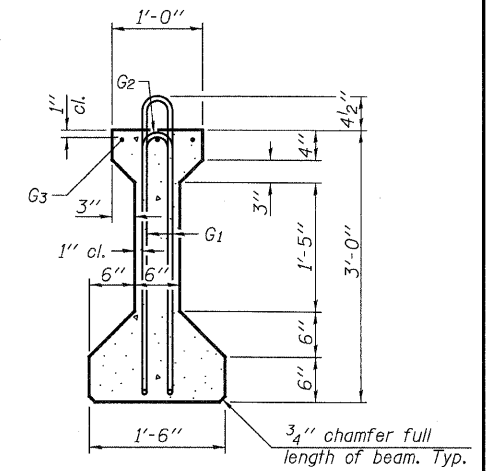
ELEVATION OF BEAM
(Showing reinforcement & dimensions)

* 3 spaces at 3" = 9"
** 4-3/4" φ threaded dowel rods at 3" cts., each face.

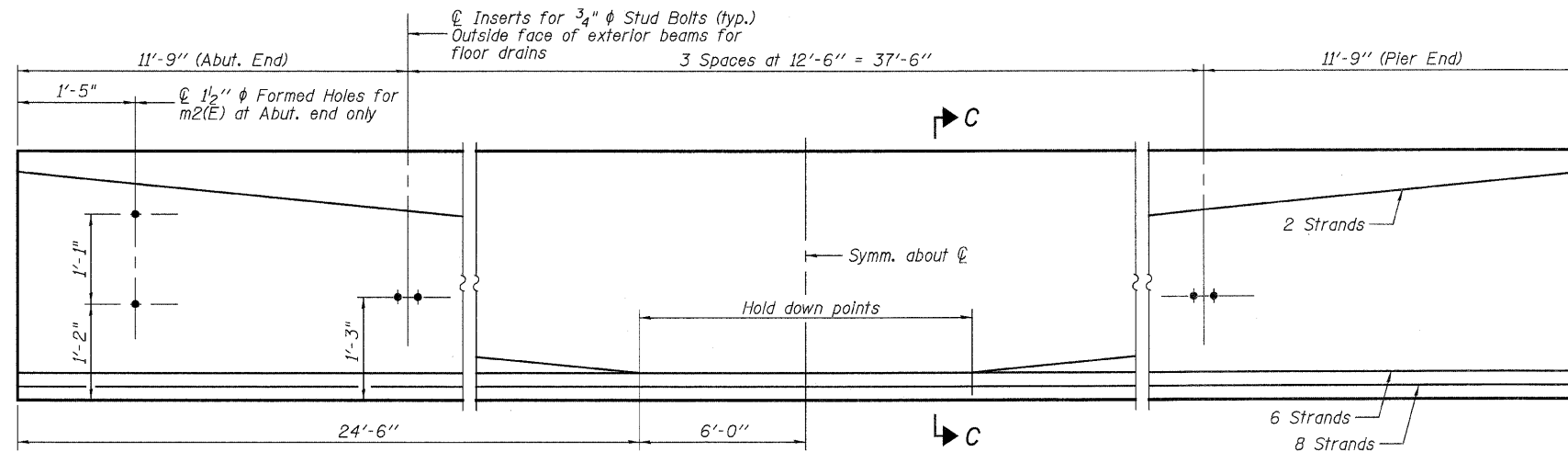
Note A:
Hex nuts (top and bottom) with lock washers (top). Only tighten sufficiently to compress lock washers.



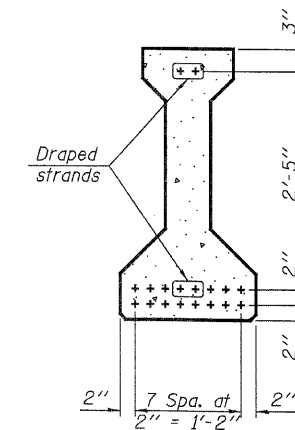
SECTION A-A



SECTION B-B



ELEVATION OF BEAM
(Showing prestressing steel)



SECTION C-C

***** BAR LIST
ONE BEAM ONLY**

Bar	No.	Size	Length	Shape
G ₁	59	#4	7'-5"	∩L
G ₂	8	#4	5'-8"	∩
G ₃	6	#5	31'-5"	—
G ₄	38	#3	4'-1"	—
G ₆	2	#8	3'-9"	—

*** For information only

Notes:
See sheet #11 of 18 for additional details and Bill of Material.
Required release strength, f'ci, shall be 5,000 psi.

36" PPC I-BEAM - SPANS 1 & 3
ILLINOIS 47 OVER
NORTH FORK VERMILION RIVER
FAP ROUTE 326 SECTION (123)BR-3
LIVINGSTON COUNTY
STATION 949+25.00
STRUCTURE NO. 053-0179

JD Johnson, Depp & Quisenberry CONSULTING ENGINEERS Springfield, Illinois	
DESIGNED: CDB	DRAWN: P. Ray
CHECKED: DCD	CHECKED: CDB/DCD

PI-4-36

7-15-05 (with 12-21-06 Revisions)

FILE: J:\JDD\1036 IL47 Livingston PI2\YermilionRiver\09beam.dgn

USER: DCD

DATE: 11/29/2007 10:49:19