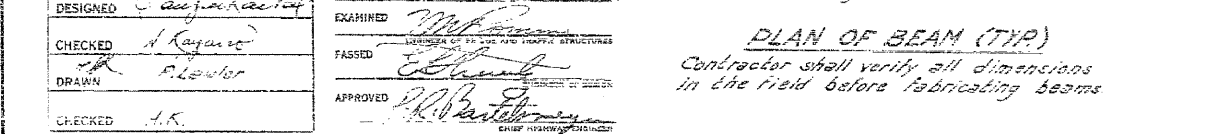
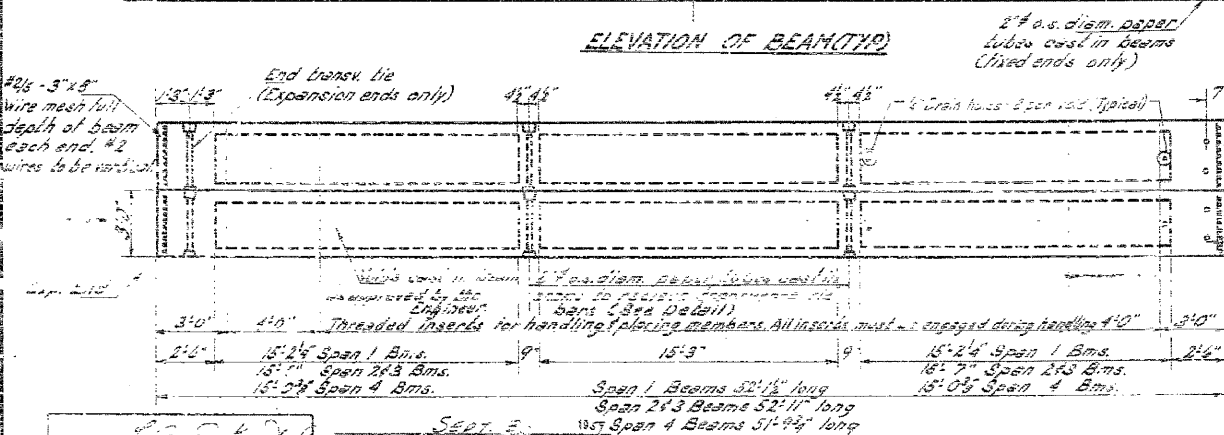
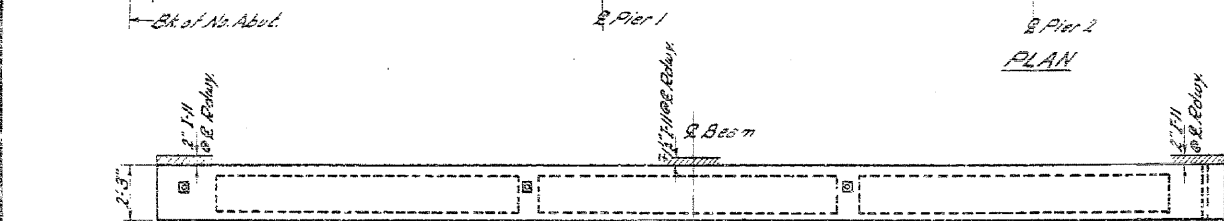
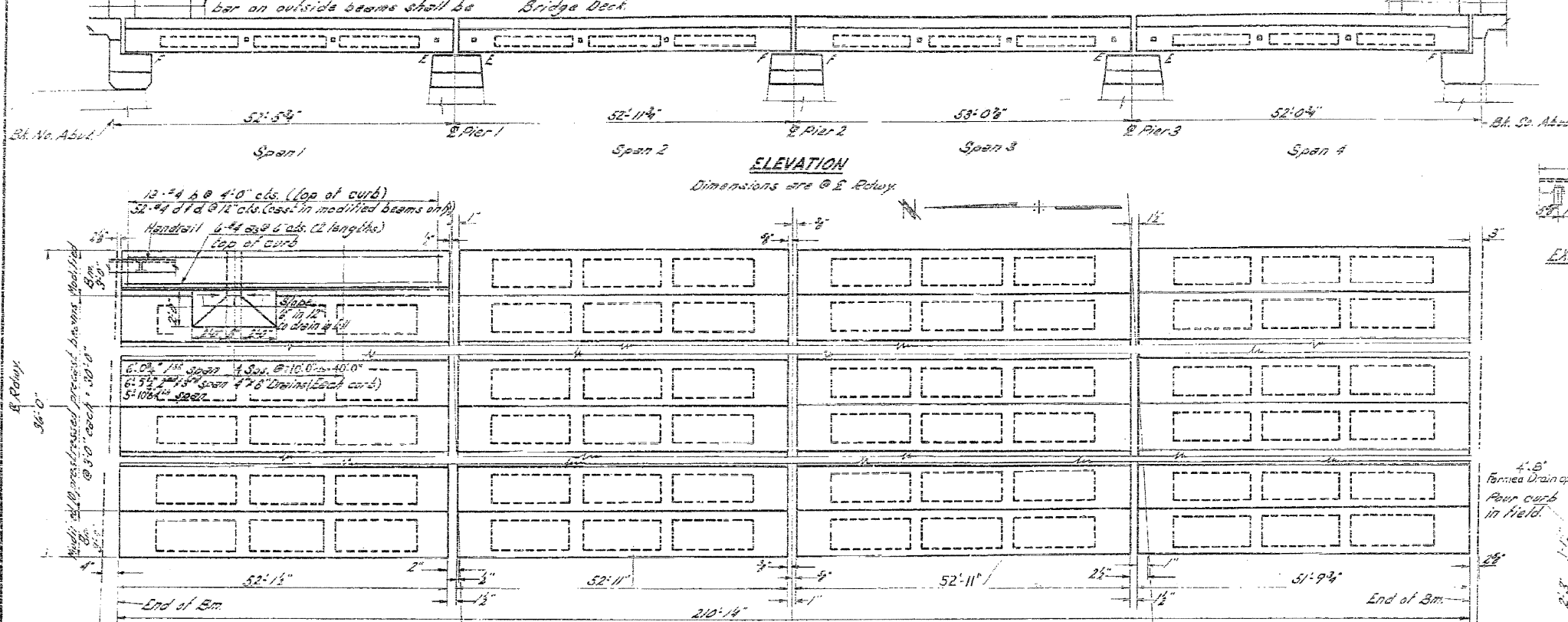


STATE OF ILLINOIS
DEPARTMENT OF PUBLIC WORKS & BUILDINGS
DIVISION OF HIGHWAYS

EXISTING SN. 053-0050 AS-BUILT
PLANS FOR INFORMATION ONLY
STRUCTURE TO BE REMOVED

GENERAL NOTES FOR SUPERSTRUCTURE

For Item "Precast Prestressed Concrete Bridge Deck" See Supplemental Specifications. Strand used as prestressing element shall be nongalvanized high strength stress relieved 7-wire strand. The nominal diameter of strand shall not exceed 3/4" and the nominal cross sectional area will be 0.097". Packets that receive transverse tie bar on outside beams shall be filled with grout after transverse tie assembly is in place. The 1/4" rods in the transverse tie assembly shall be tightened to snug fit and the threads set. The cost of the Roadway Expansion guard cast in beams shall be included in the unit price for Precast Prestressed Concrete Bridge Deck.

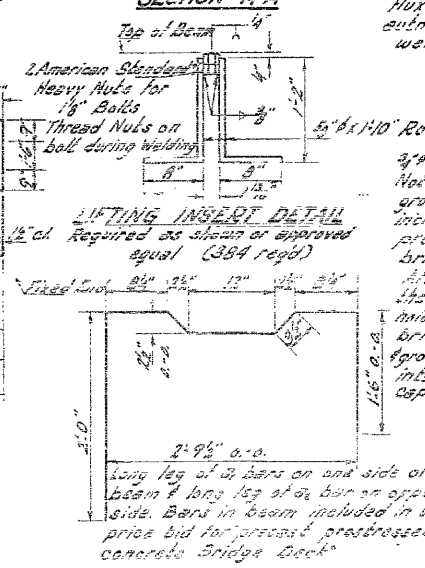
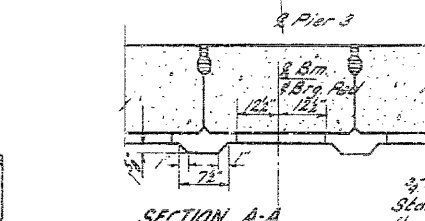


DESIGNED: [Signature]
CHECKED: [Signature]
DRAWN: [Signature]
CHECKED: [Signature]

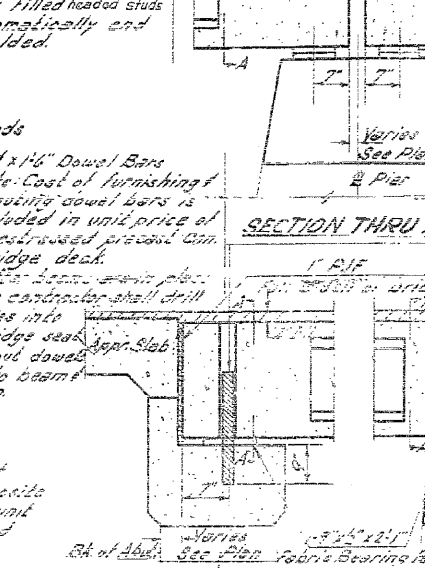
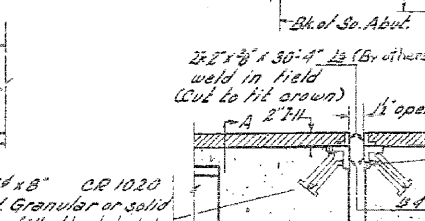
EXAMINED: [Signature]
PASSED: [Signature]
APPROVED: [Signature]

SEPT. 5, 1957

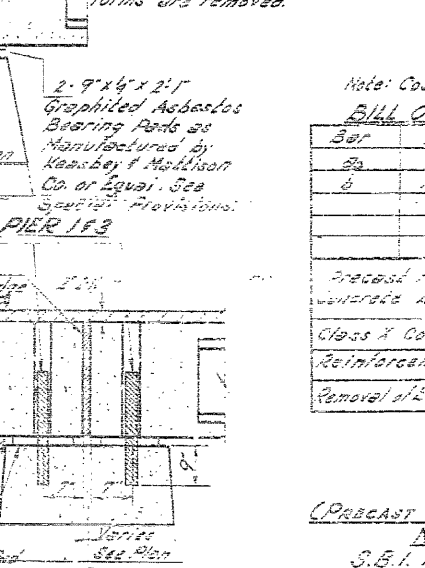
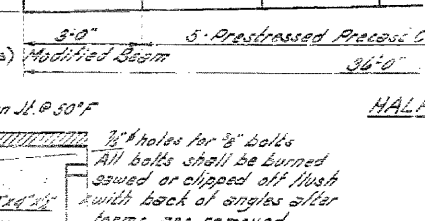
PLAN OF BEAM (TYR)
Contractor shall verify all dimensions in the field before fabricating beams



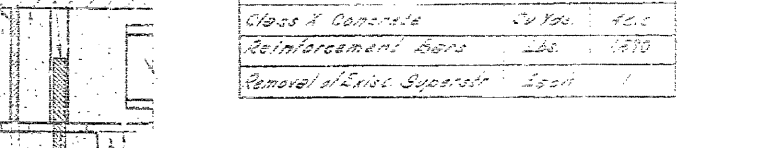
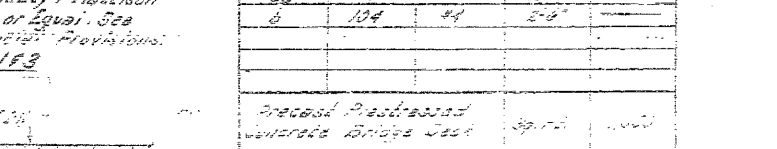
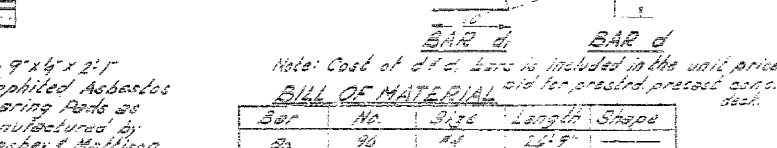
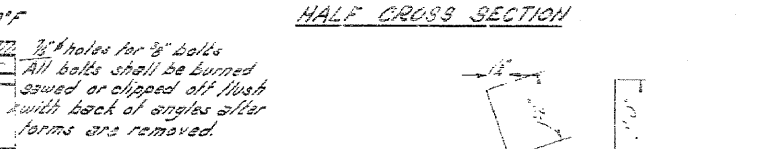
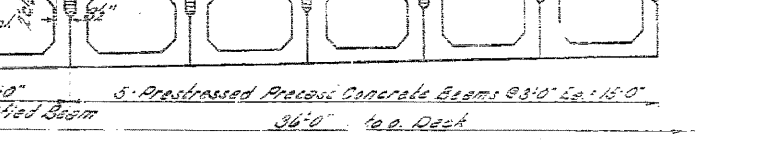
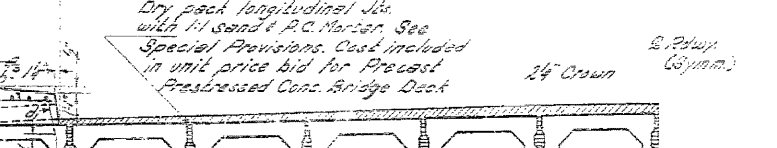
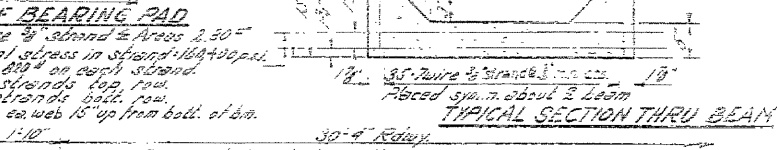
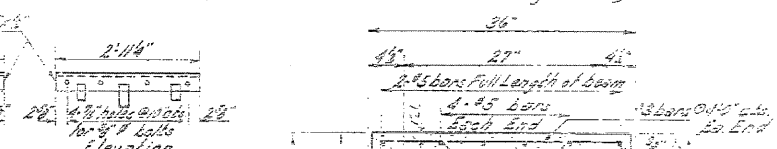
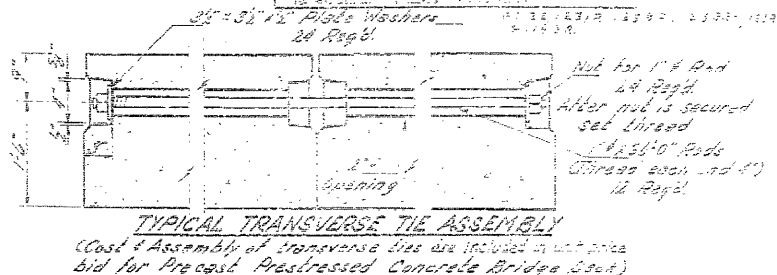
SECTION THRU PIER 1 & 3



SECTION THRU N.S. ABUTS.



SECTION THRU PIER 2



SECTION THRU PIER 2

NOTE: Cost of 1/4" dia. bars is included in the unit price bid for precast prestressed concrete deck.

BILL OF MATERIAL

Bar No.	Qty	Length	Shape
1	46	25.5'	
2	104	2'-0"	
Precast Prestressed Concrete Bridge Deck 39.00			
Class 1 Concrete 20 Yds. 40.00			
Reinforcement Bars Lbs. 1670			
Removal of Existing Superstr. 1.00			

SUPERSTRUCTURE
(PRECAST PRESTRESSED CONCRETE BRIDGE DECK)
NORTH FORK VERMILLION RIVER
S.B.I. RT. 47 STA. 123 B.R-1
WINSTON COUNTY
STA. 949 + 25