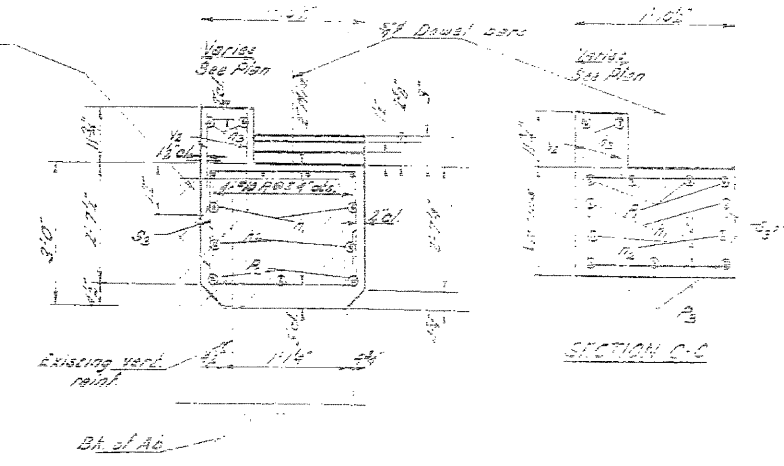
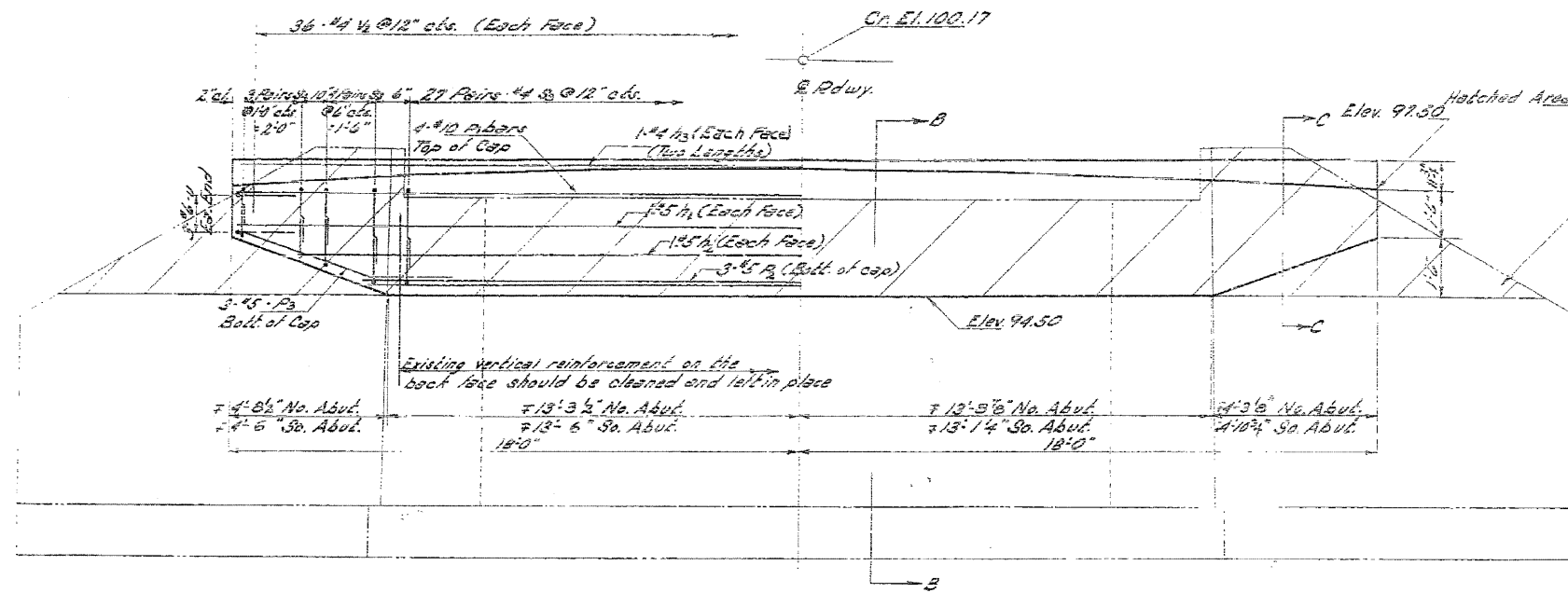


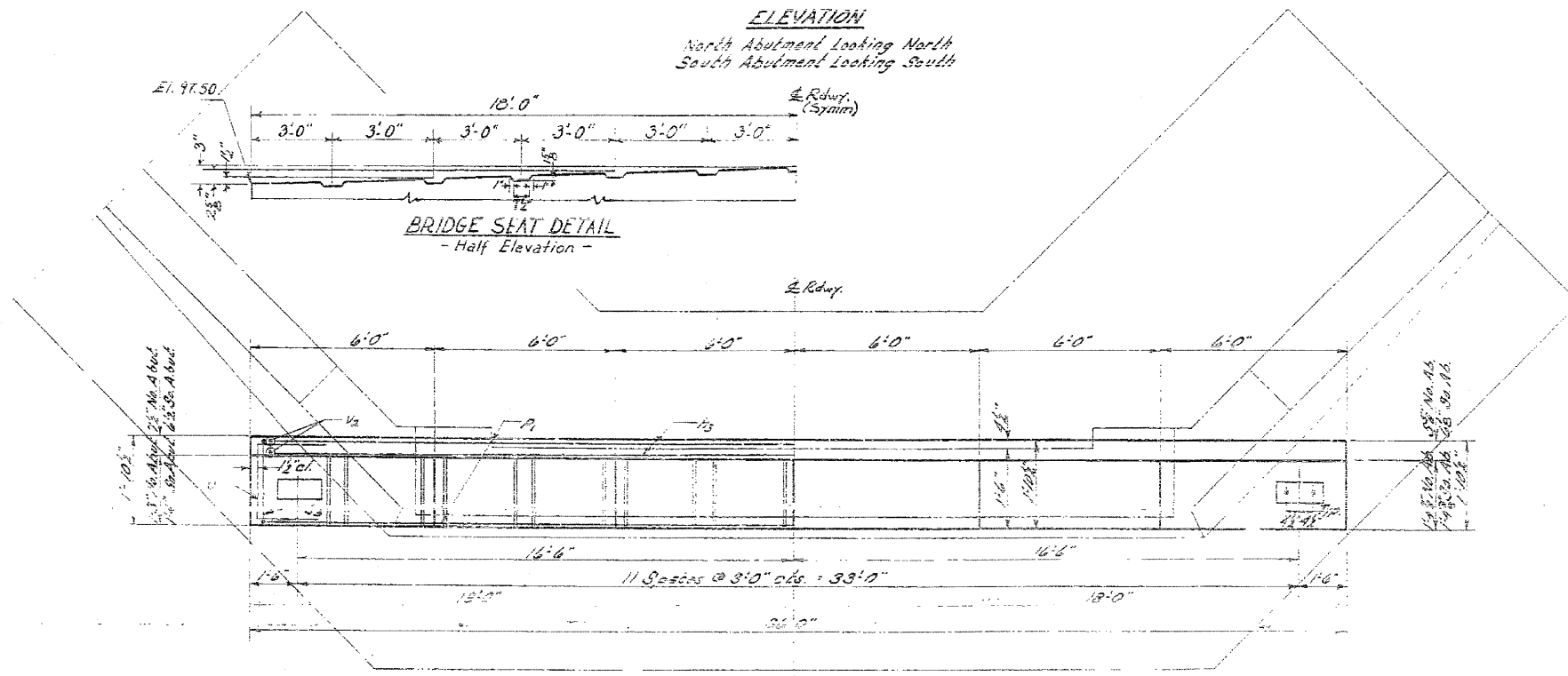
STATE OF ILLINOIS
DEPARTMENT OF PUBLIC WORKS & BUILDINGS
DIVISION OF HIGHWAYS

EXISTING SN. 053-0050 AS-BUILT
PLANS FOR INFORMATION ONLY -
STRUCTURE TO BE REMOVED

DATE	NO.	DESCRIPTION



ELEVATION
North Abutment Looking North
South Abutment Looking South



BRIDGE SEAT DETAIL
- Half Elevation -

PLAN

SECTION B-B

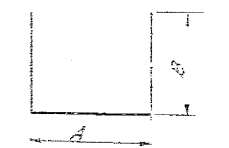


TABLE FOR
A & B DIMENSIONS

Bar	A	B
S2	1'0 1/2	1'0 1/2
S4	1'0 1/2	1'0 1/2
U	1'0 1/2	1'0 1/2

NORTH & SOUTH
ABUTMENTS
BILL OF MATERIAL

Bar No.	Size	Length	Grade
1	#5	35'-8"	
2	#5	30'-8"	
3	#4	18'-4"	
S2	#4	5'-1"	
S4	#4	4'-0"	
U	#5	35'-8"	
E1	#5	26'-0"	
E2	#5	27'-0"	
E3	#6	4'-5"	
E4	#4	4'-0"	

Class I Concrete Co. Wt. 13:5
Reinforcement Bars Co. 2650
Concrete Removal Co. 12

BAR P3

NORTH & SOUTH ABUTMENTS
NORTH FORK VERMILION RIVER
S.B. RT. 47 SEC. 12 S - 3 R.
WINSTON COUNTY
STA. 949 + 30

DESIGNED	<i>Carroll</i>	SEPT. 30 19 59
CHECKED	<i>Haynes</i>	
DRAWN	<i>P. Lowler</i>	
CHECKED	<i>A.K.</i>	
EXAMINED	<i>W. R. ...</i>	
PASSED	<i>E. ...</i>	
APPROVED	<i>R. ...</i>	