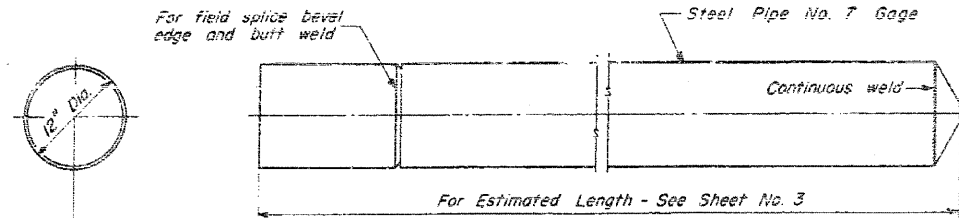


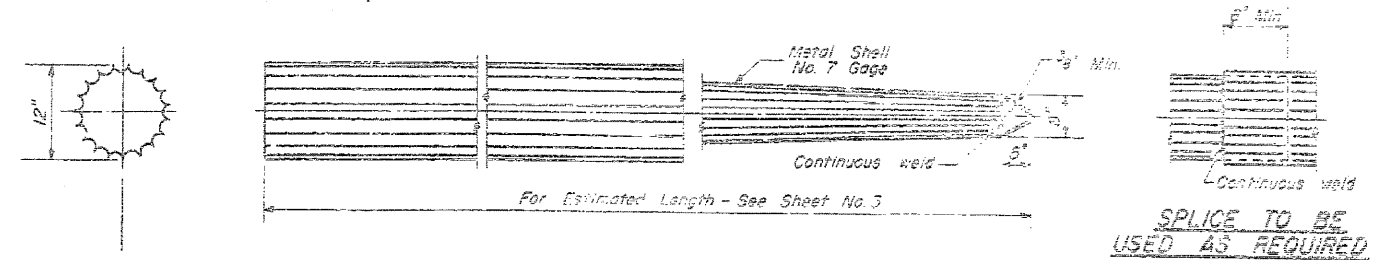
STATE OF ILLINOIS  
DEPARTMENT OF PUBLIC WORKS & BUILDINGS  
DIVISION OF HIGHWAYS

EXISTING SN. 053-0050 AS-BUILT  
PLANS FOR INFORMATION ONLY -  
STRUCTURE TO BE REMOVED

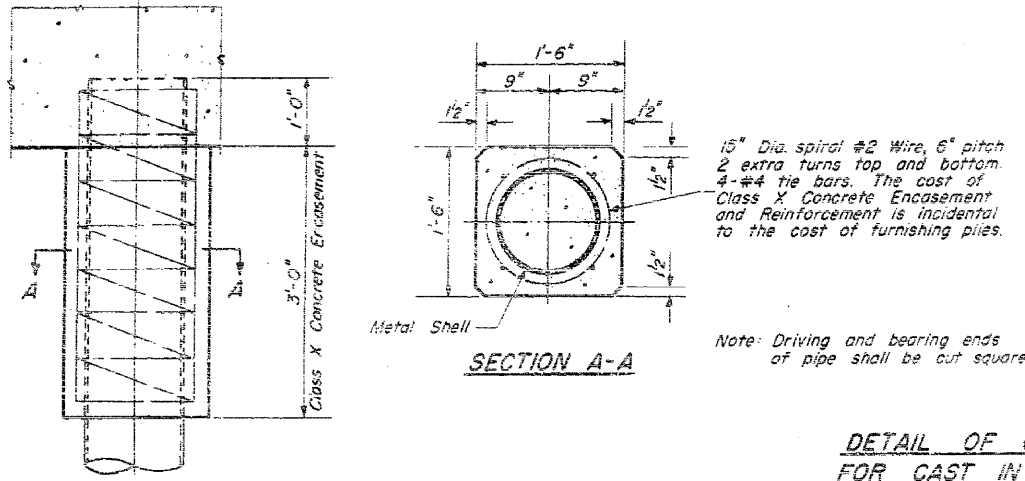
DATE	ISSUE	BY	NO.	DESCRIPTION
11/22/1984	1	W.A. SAUSAMAN	1	ISSUED
11/22/1984	2	W.A. SAUSAMAN	2	REVISED
11/22/1984	3	W.A. SAUSAMAN	3	REVISED
11/22/1984	4	W.A. SAUSAMAN	4	REVISED



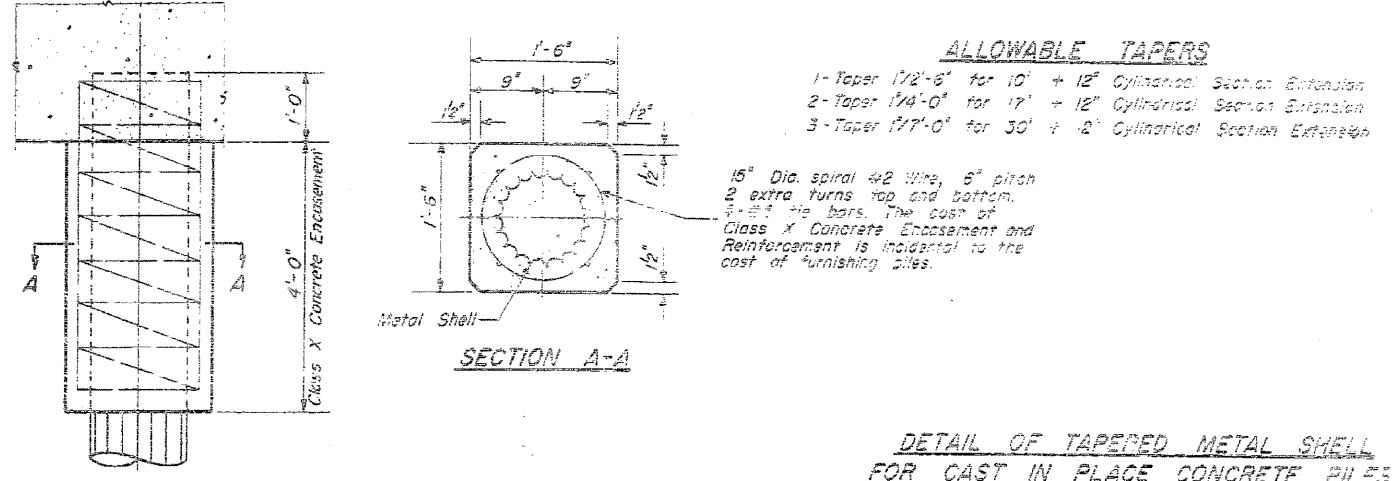
OPTIONAL FLAT END



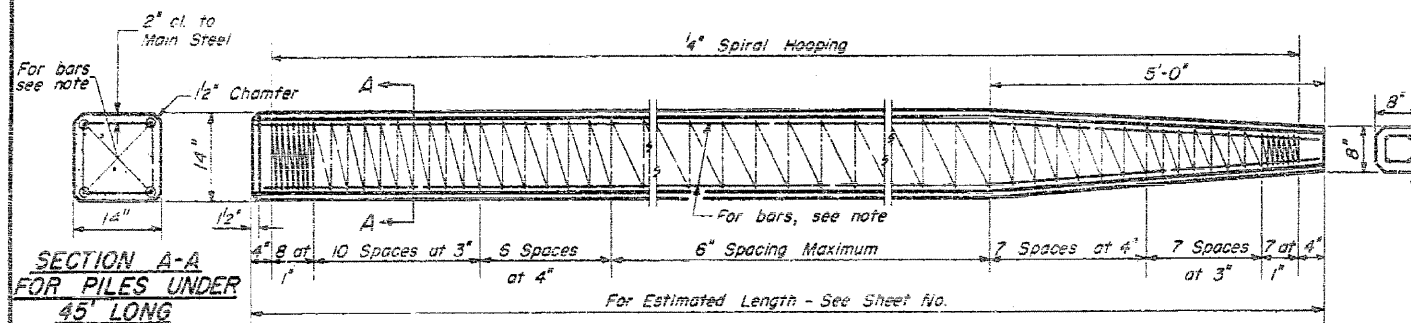
SPlice TO BE USED AS REQUIRED



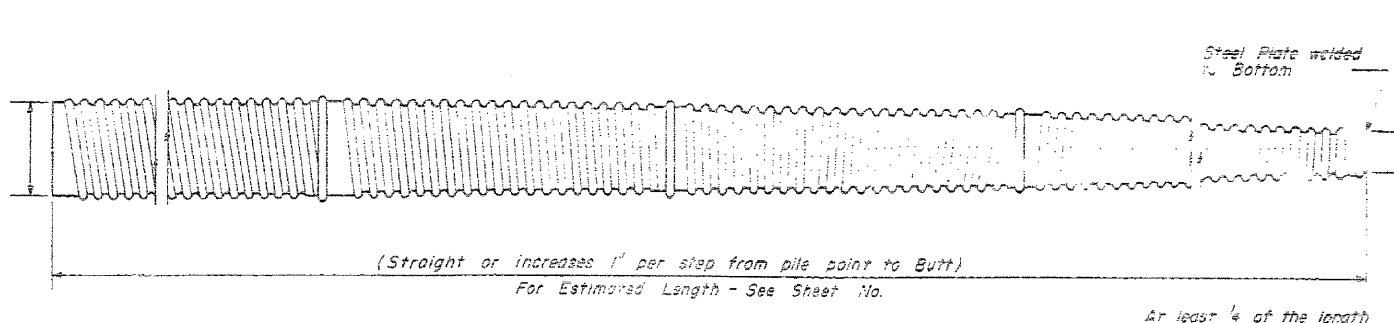
DETAIL OF CYLINDRICAL STEEL SHELL FOR CAST IN PLACE CONCRETE PILES



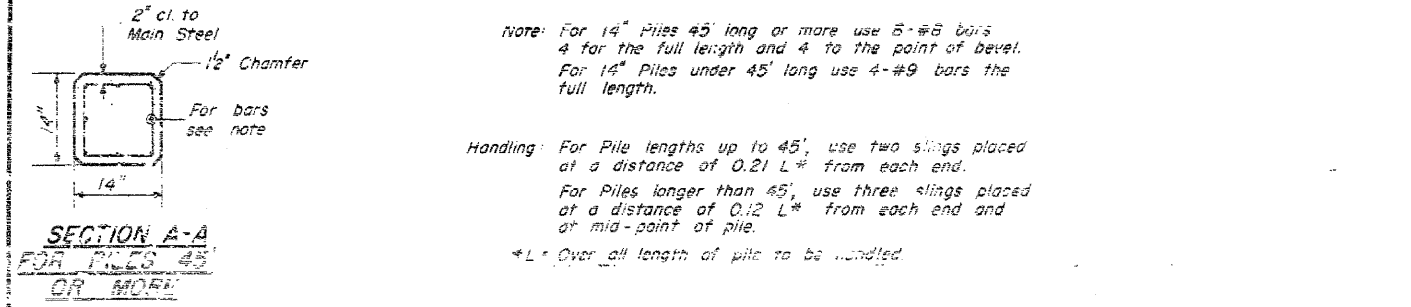
DETAIL OF TAPERED METAL SHELL FOR CAST IN PLACE CONCRETE PILES



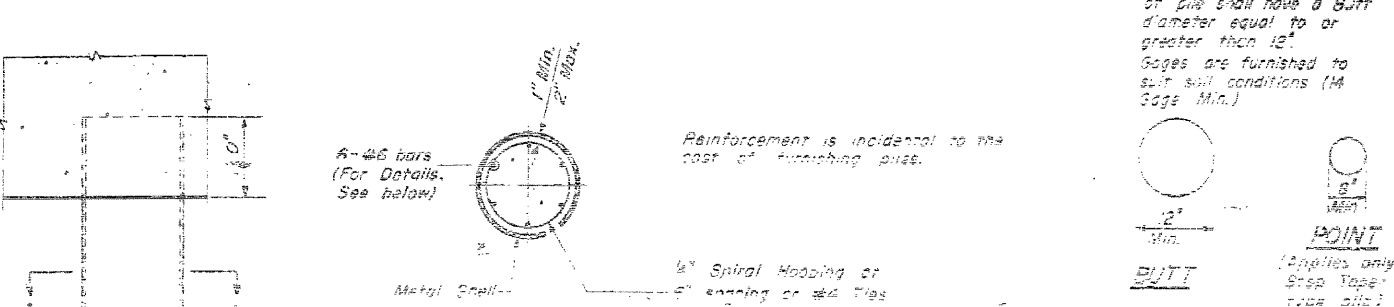
SECTION A-A FOR PILES UNDER 45' LONG



(Straight or increases 1 inch per step from pile point to Butt)  
For Estimated Length - See Sheet No.



SECTION A-A FOR PILES 45' OR MORE



SECTION A-A  
DETAIL OF MANDREL DRIVEN STRAIGHT OR STEP-TAPER PILES FOR CAST IN PLACE CONCRETE PILES

CONCRETE PILE DETAIL  
NORTH FORK VERMILLION RIVER  
S.B.I. RT. 47 - SEC. 123 BR-1  
LIVINGSTON COUNTY  
STATION 949+25

DESIGNED	EXAMINED
CHECKED	PASSED
DRAWN W.A. SAUSAMAN	APPROVED
CHECKED	