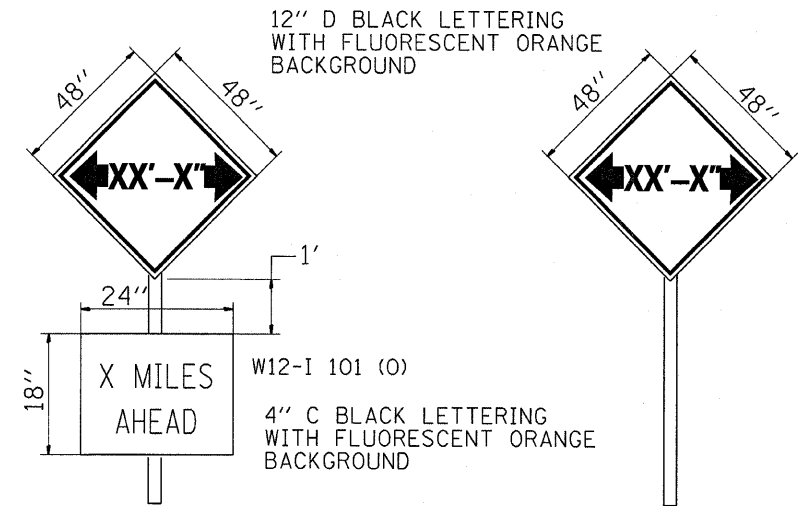


F.A.P. RTE.	SECTION	COUNTY	TOTAL SHEETS	SHEET NO.
326		LIVINGSTON	354	152
STA.		TO STA.		
FED. ROAD DIST. NO.		ILLINOIS FED. AID PROJECT		
*(123,123X)RS-3, (124)RS-5, (123)BR-3				



TO BE POST MOUNTED AS SHOWN ELSEWHERE IN THE PLANS.

THE ENGINEER SHALL NOTIFY DISTRICT 3 BUREAU OF OPERATIONS 14 CALENDAR DAYS PRIOR TO INSTALLING ANY TRAFFIC CONTROL DEVICES THAT WILL RESTRICT THE PAVEMENT WIDTH.

THE CONTRACTOR SHALL BE RESPONSIBLE FOR COORDINATING WITH THE ENGINEER TO MEET THIS REQUIREMENT.

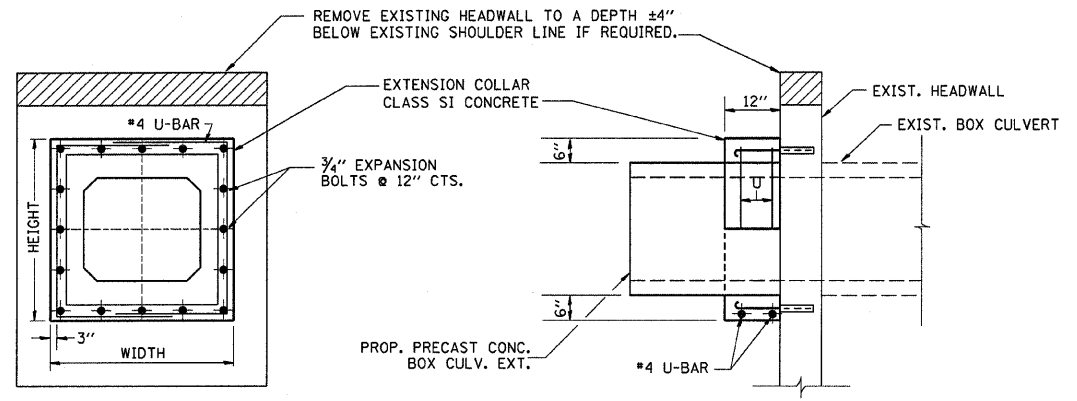
COST OF SUPPLYING, INSTALLING, MAINTAINING AND REMOVING WIDTH RESTRICTION SIGNS SHALL BE INCLUDED IN THE COST OF THE TRAFFIC CONTROL AND PROTECTION PAY ITEMS.

WIDTH RESTRICTION SIGNING DETAILS

(SEE STAGING TYPICAL SECTION SHEET FOR LOCATIONS)

* UPON COMPLETION OF STAGE I REMOVE OR COVER SIGNS

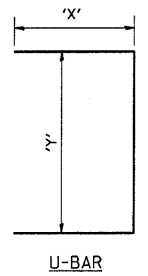
XX'-X" = 10'-8" (VERMILION RIVER STRUCTURE) STA. 949 + 25 *
9'-6" (6'X2' RCBC) STA. 1245 + 85



EXPANSION BOLTS SHALL CONSIST OF SELF DRILLING EXPANSION SHIELDS AND 3/4" DIA. HOOKED BOLTS. HOOKED BOLTS SHALL EXTEND A MINIMUM OF 9" INTO NEW CONCRETE. BOLTS SHALL BE DRILLED IN THE CENTER OF THE EXISTING BOX CULVERT BARREL WALLS. MINIMUM CERTIFIED PROOF LOAD = 4,080 LBS.

QUANTITIES ARE FOR ONE SIDE ONLY

LOCATION	EXISTING CULVERT SIZE FT. x FT.	PRECAST CULVERT EXTENSION FT. x FT.	EXTENSION COLLAR		U-BAR #4		CONC. COLLAR CU. YD.	REINFORCEMENT BARS POUND	3/4" DIA. EXPANSION BOLTS EACH
			WIDTH IN.	HEIGHT IN.	'X' IN.	'Y' IN.			
LT. 810+98.5	3 X 2	3 X 2	56	44	29	38	0.30	22	14
RT. 810+98.5	3 X 2	3 X 2	56	44	29	38	0.30	22	14
LT. 828+30	3 X 2	3 X 2	56	44	29	38	0.30	22	14
RT. 828+30	3 X 2	3 X 2	56	44	29	38	0.30	22	14



COLLAR DETAIL (PRECAST BOX CULVERT EXTENSION OF BOX CULVERT)

REVISIONS		ILLINOIS DEPARTMENT OF TRANSPORTATION
NAME	DATE	
		DETAILS
		SCALE: VERT. HORIZ. DATE
		DRAWN BY CHECKED BY