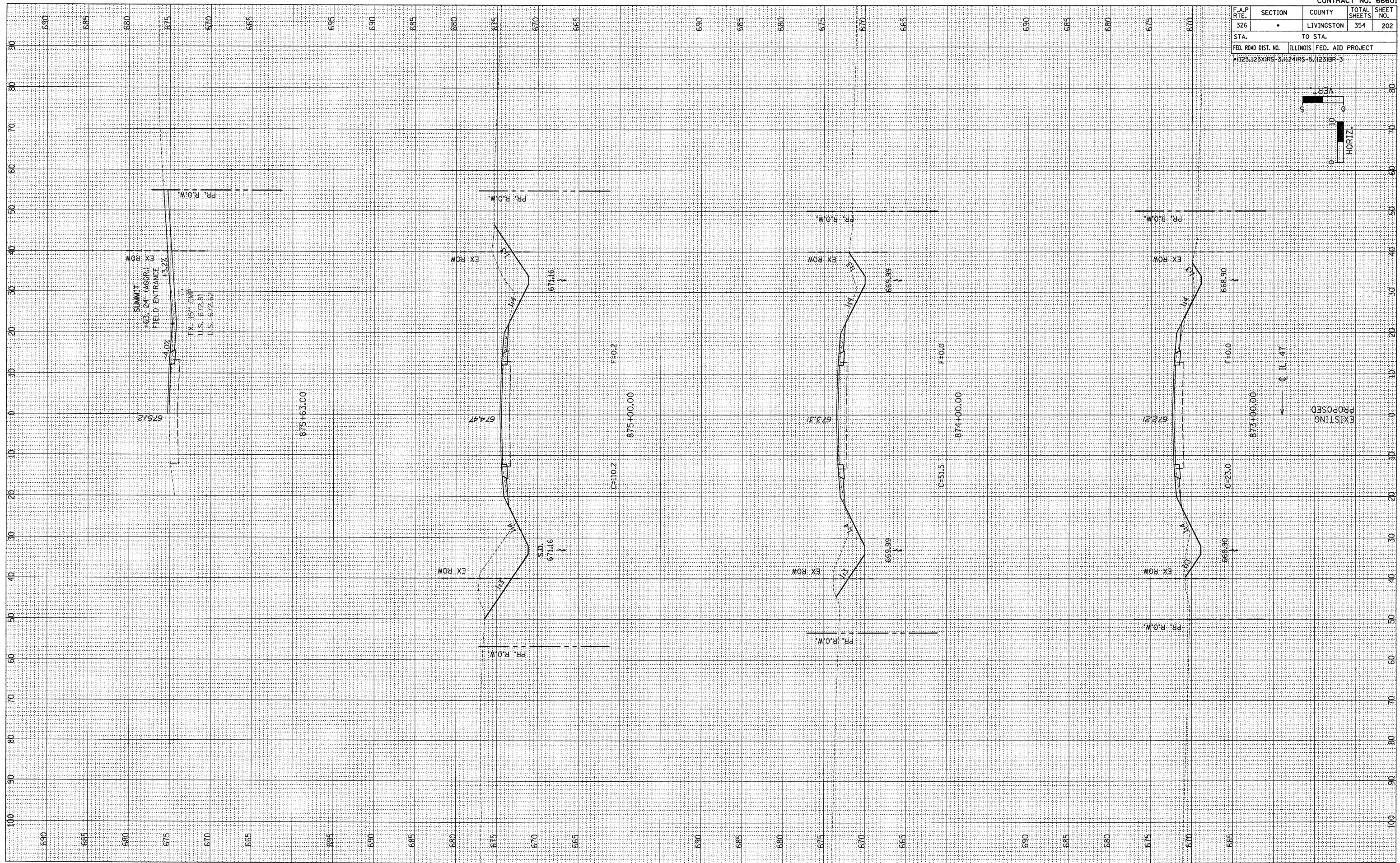
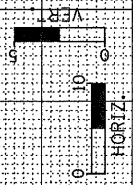


F.A.P. RTE. 326	SECTION •	COUNTY LIVINGSTON	TOTAL SHEETS 354	SHEET NO. 202
STA. 1123+12.5X195-5, 1124+195-5, 1123+195-5		TO STA.		
FED. ROAD DIST. NO.		ILLINOIS FED. AID PROJECT		



FINAL SURVEY	DATE
REVISIONS	BY
PLOTTED	
TEMPLATE	
AREAS	
CHECKED	
NO.	

ORIGINAL SURVEY	DATE
REVISIONS	BY
PLOTTED	
TEMPLATE	
AREAS	
CHECKED	
NO.	