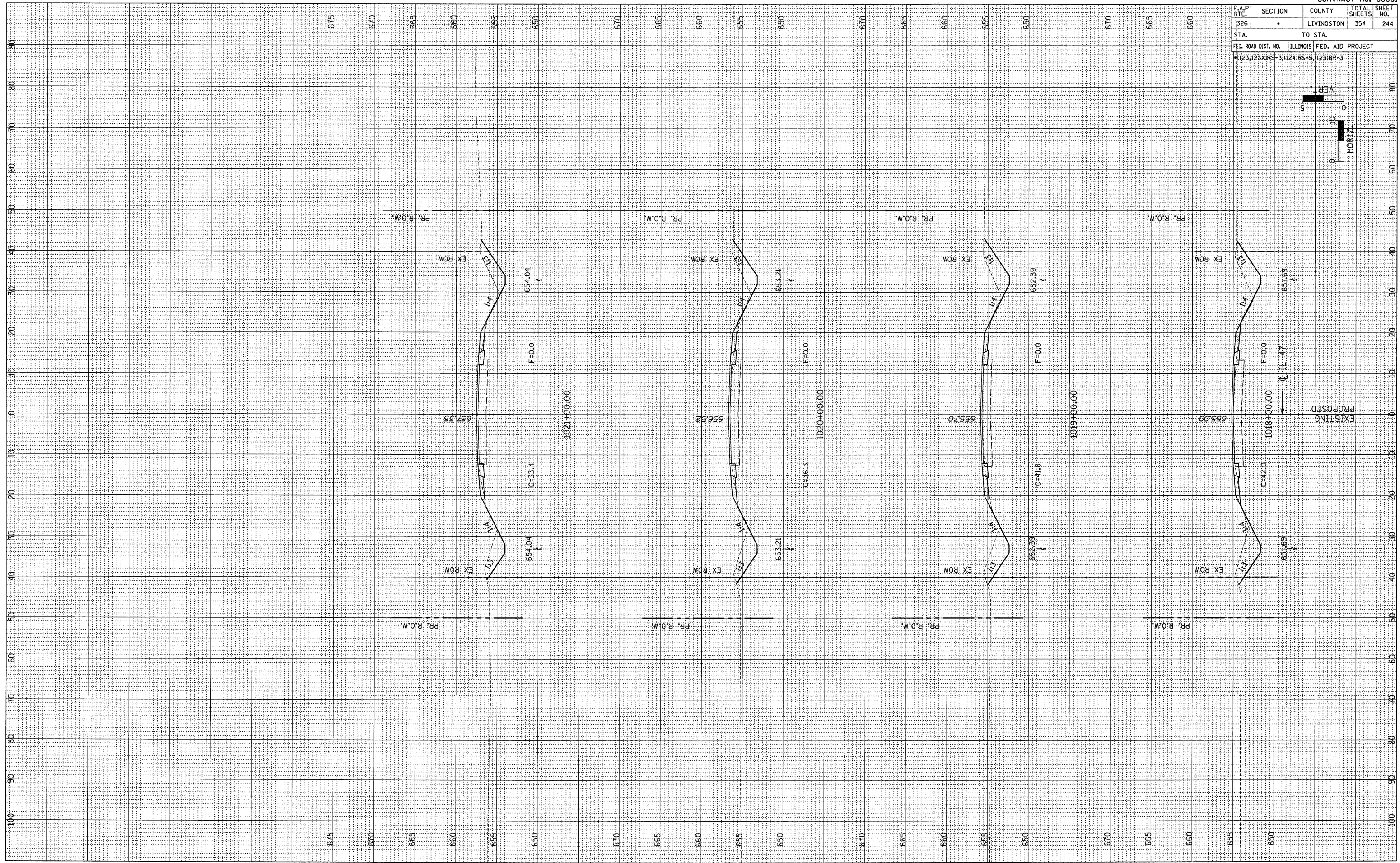
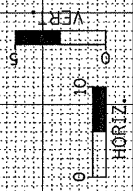


F.A.P. RTE.	SECTION	COUNTY	TOTAL SHEETS	SHEET NO.
326		LIVINGSTON	354	244
STA.		TO STA.		
FED. ROAD DIST. NO.		ILLINOIS FED. AID PROJECT		
1123,123XRS-3,124RS-5,123IBR-3				



EXISTING
PROPOSED

FINAL SURVEY	DATE
BY	
REVISIONS	
NO.	

ORIGINAL SURVEY	DATE
BY	
REVISIONS	
NO.	