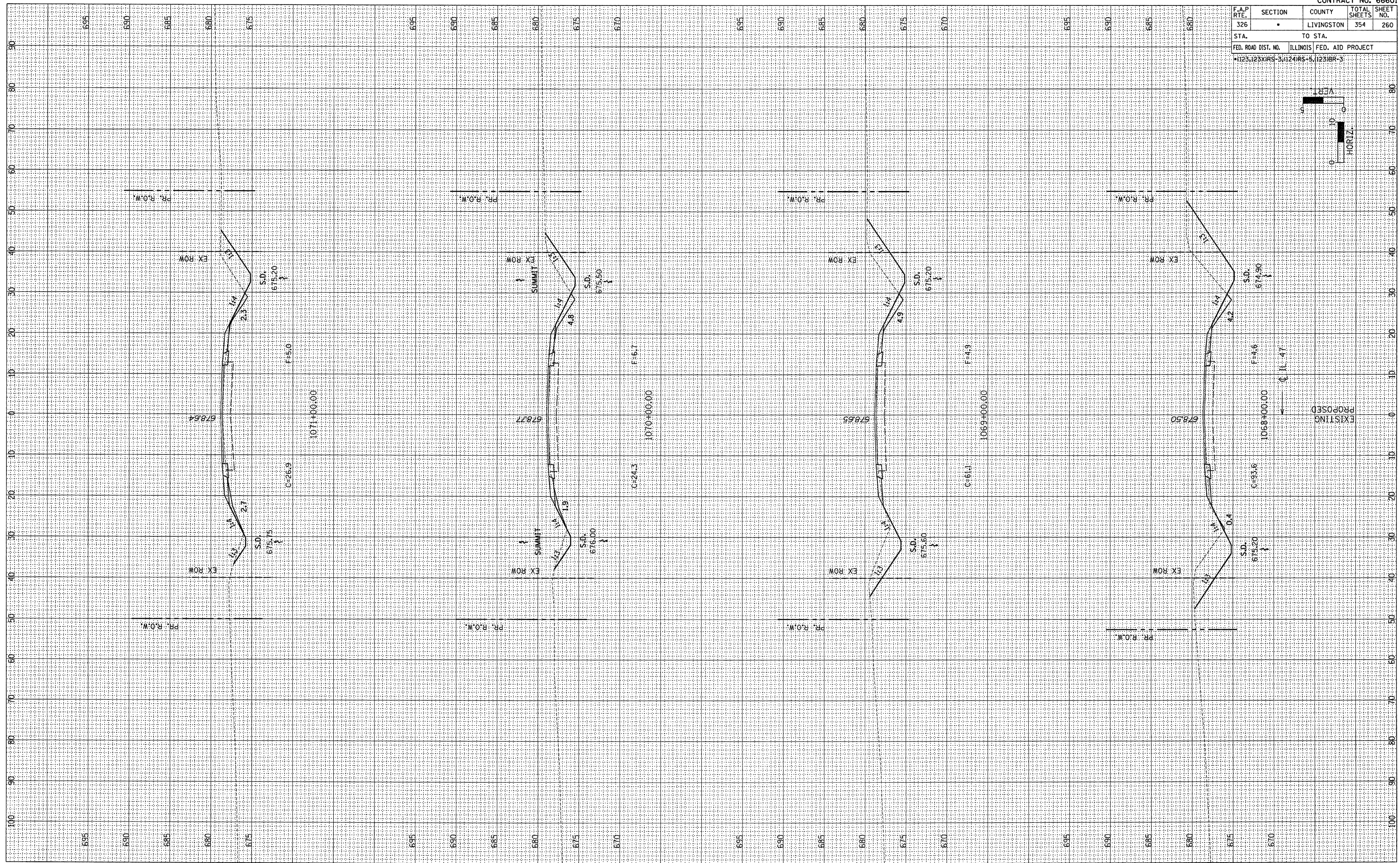
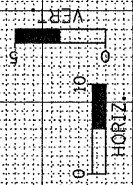


F.A.P. RTE. 326	SECTION •	COUNTY LIVINGSTON	TOTAL SHEETS 354	SHEET NO. 260
STA.		TO STA.		
FED. ROAD DIST. NO.		ILLINOIS FED. AID PROJECT		
1123,123X1R5-3,1124R5-5,1123BR-3				



EXISTING  
PROPOSED

ORIGINAL SURVEY	BY	DATE
COPIED		
PLOTTED		
TEMPLATE		
NOTE BOOK		
AREAS		
AREAS CHECKED		
NO.		

ORIGINAL SURVEY	BY	DATE
COPIED		
PLOTTED		
TEMPLATE		
NOTE BOOK		
AREAS		
AREAS CHECKED		
NO.		